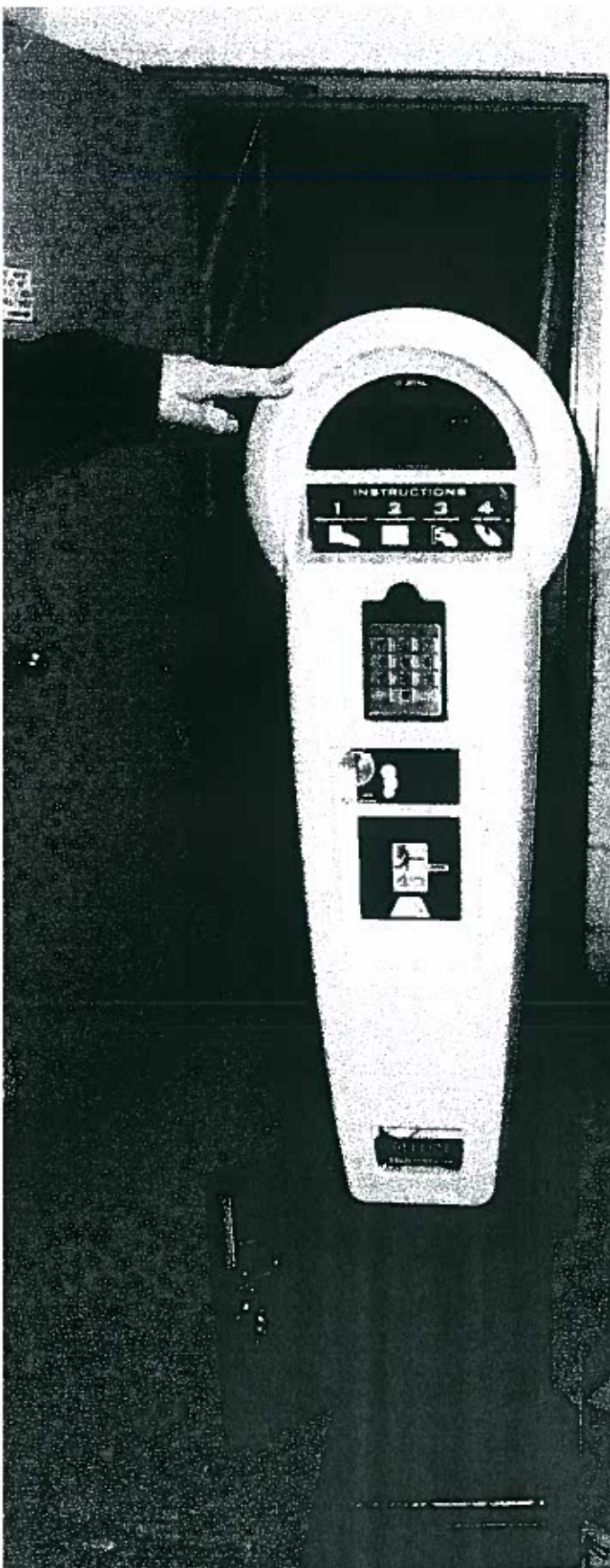
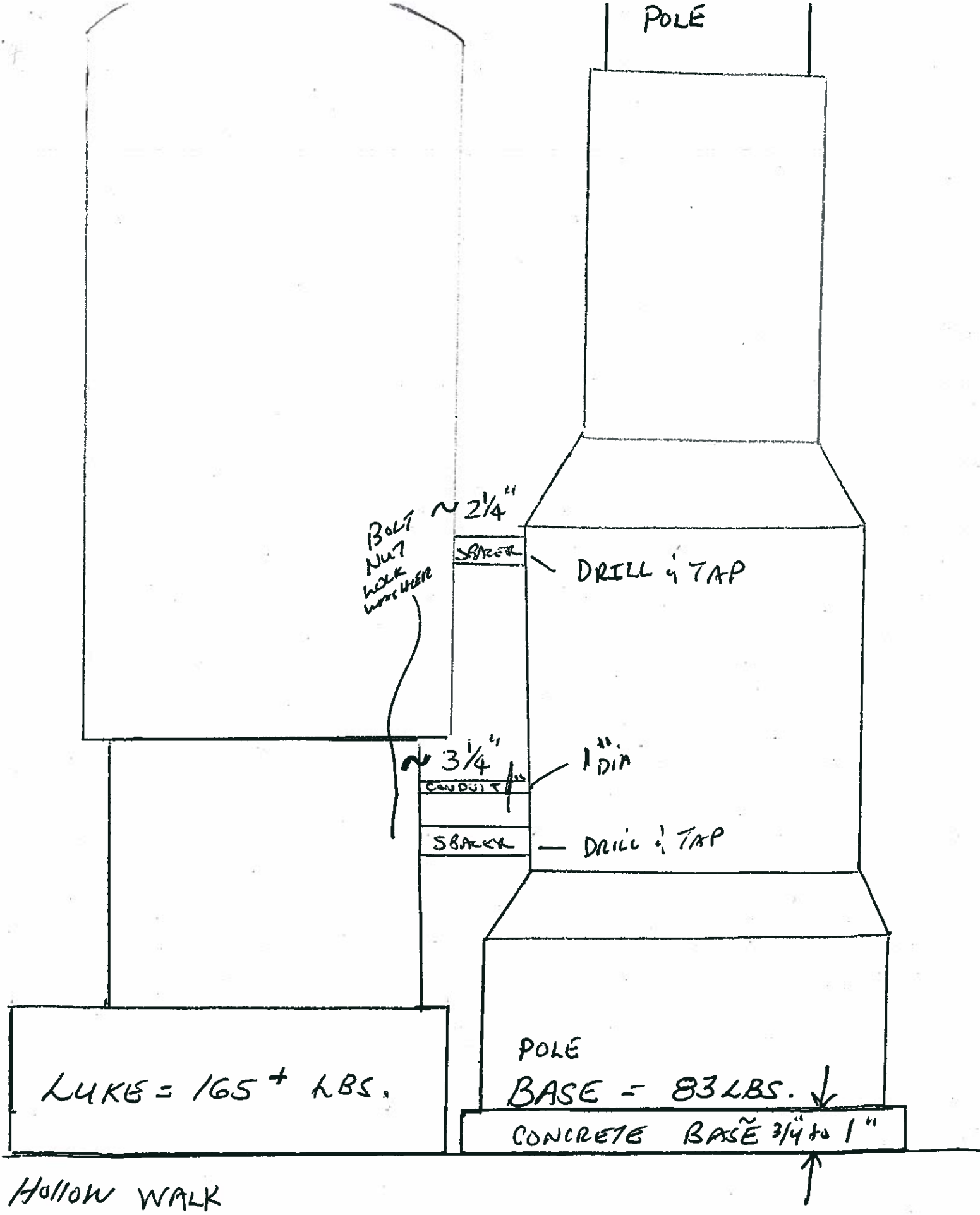


040068



SPACE
DUE TO BASE.



POLE

BOLT
NUT
WALK
WIRE HERE

~ 2 1/4"

SPACER

DRILL & TAP

~ 3 1/4"

CONDUIT

1" DIA

SPACER

DRILL & TAP

LUKE = 165 + LBS.

POLE
BASE = 83 LBS. ↓

CONCRETE BASE 3/4" to 1"

HOLLOW WALK