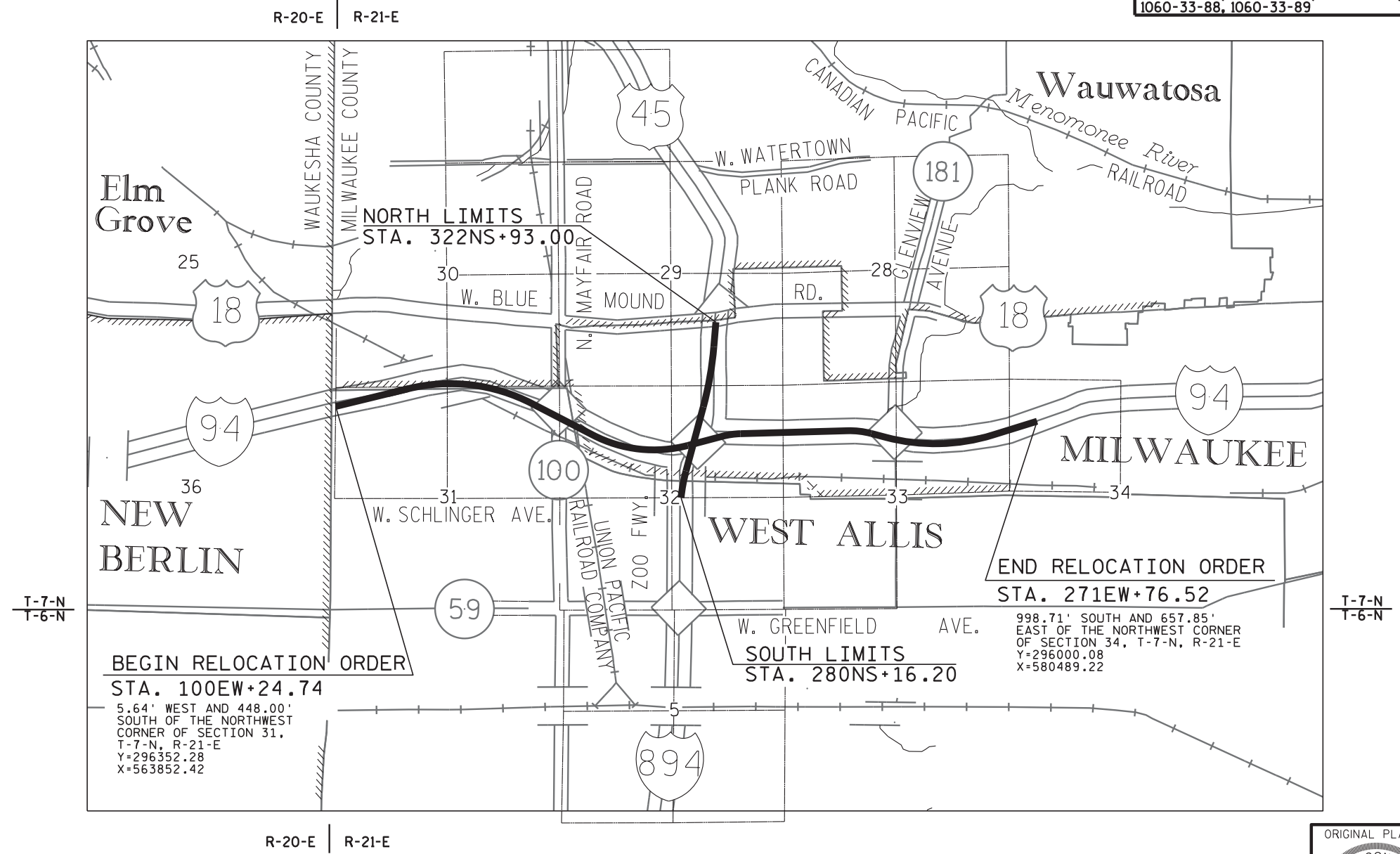


R/W PROJECT NUMBER 1060-33-24	SHEET NUMBER 4.01	TOTAL SHEETS
FEDERAL PROJECT NUMBER		
PLAT OF RIGHT-OF-WAY REQUIRED FOR IH 94 (S. 124TH STREET - S. 70TH STREET)		
IH 94		MILWAUKEE CO.
CONSTRUCTION PROJECT NUMBER 1060-33-75, 1060-33-78, 1060-33-81, 1060-33-86, 1060-33-88, 1060-33-89		

CONVENTIONAL ABBREVIATIONS		
ACCESS POINT/ DRIVEWAY CONNECTION	AP	REFERENCE LINE
ACCESS RIGHTS	AR	RELEASE OF RIGHTS
ACRES	AC.	REMAINING
AND OTHERS	ET.AL.	RIGHT-OF-WAY
BUILDING	B	SECTION
CENTERLINE	C/L	STATION
CERTIFIED SURVEY MAP	CSM	TEMPORARY LIMITED EASEMENT
CORNER	COR.	VOLUME
DOCUMENT	DOC.	CURVE DATA
EASEMENT	EASE.	LONG CHORD
HIGHWAY EASEMENT	H.E.	LONG CHORD BEARING
IMAGE	I	RADIUS
LAND CONTRACT	LC	DEGREE OF CURVE
MONUMENT	MON.	CENTRAL ANGLE OR DELTA
PAGE	P.	LENGTH OF CURVE
PERMANENT LIMITED EASEMENT	PLE	TANGENT
PROPERTY LINE	PL	
RECORDED AS REEL	(100') R	
CONVENTIONAL SYMBOLS		
FOUND IRON PIPE/PIN	UP (IF UNLESS NOTED)	PROPOSED R/W LINE
R/W MONUMENT	● (SET)	EXISTING H.E. LINE
R/W STANDARD	▲ (SET)	PROPERTY LINE
SIGN	ISIGN	LOT & TIE LINES
SECTION CORNER MONUMENT	●	SLOPE INTERCEPTS
SECTION CORNER SYMBOL	⊙	CORPORATE LIMITS
FEE (HATCH VARIES)	⊘	ACCESS RESTRICTED (BY PREVIOUS ACQUISITION/CONTROL)
TEMPORARY LIMITED EASEMENT	⊘	ACCESS RESTRICTED (BY ACQUISITION)
PERMANENT LIMITED EASEMENT	⊘	NO ACCESS (BY STATUTORY AUTHORITY)
R/W BOUNDARY POINT	⊘	SECTION LINE
PARCEL NUMBER	⊘	QUARTER LINE
UTILITY PARCEL NUMBER	⊘	SIXTEENTH LINE
SIGN NUMBER (OFF PREMISE)	⊘	EXISTING CENTERLINE
BUILDING	⊘	PROPOSED REFERENCE LINE
		PARALLEL OFFSET
CONVENTIONAL UTILITY SYMBOLS		
WATER	—W—	
GAS	—G—	
TELEPHONE	—T—	
OVERHEAD	—OH—	
TRANSMISSION LINES	—E—	
ELECTRIC	—E—	
CABLE TELEVISION	—TV—	
FIBER OPTIC	—FO—	
SANITARY SEWER	—SAN—	
STORM SEWER	—SS—	
NON COMPENSABLE	⊘	COMPENSABLE
POWER POLE	⊘	TELEPHONE POLE
TELEPHONE POLE	⊘	TELEPHONE PEDESTAL
TELEPHONE PEDESTAL	⊘	ELECTRIC TOWER
ELECTRIC TOWER	⊘	



NOTES:

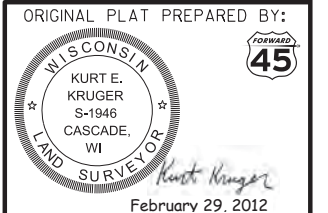
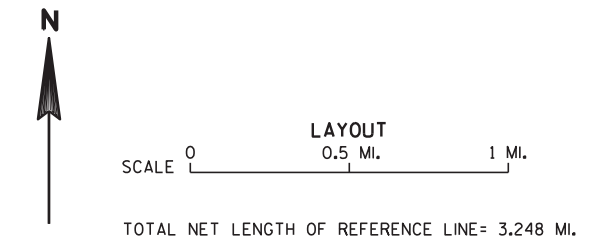
COORDINATES AND BEARINGS SHOWN ON THIS PLAT ARE REFERENCED TO THE WISCONSIN COUNTY COORDINATE SYSTEM, MILWAUKEE COUNTY ZONE, NAD83 (2007) ADJUSTMENT. THE COORDINATES SHOWN ARE GRID COORDINATES AND ARE TO BE USED AS GRID OR GROUND VALUES ON THIS PLAT.

RIGHT-OF-WAY MONUMENTS ARE TYPE 2 (TYPICAL 3/4" REBAR) AND WILL BE PLACED PRIOR TO THE COMPLETION OF THE PROJECT BY WISCONSIN DOT SOUTHEAST REGION SURVEY.

RIGHT-OF-WAY BOUNDARIES ARE DEFINED WITH COURSES OF THE PERIMETER OF THE HIGHWAY LANDS.

PROPERTY LINES SHOWN ON THIS PLAT ARE DRAWN FROM DATA DERIVED FROM MAPS AND DOCUMENTS OF PUBLIC RECORD AND/OR EXISTING OCCUPATIONAL LINES. THIS PLAT MAY NOT BE A TRUE REPRESENTATION OF EXISTING PROPERTY LINES, EXCLUDING RIGHT-OF-WAY LINES, AND SHOULD NOT BE USED AS A SUBSTITUTE FOR AN ACCURATE FIELD SURVEY.

THE HIGH ACCURACY REFERENCE NETWORK (HARN) POINTS USED ON PROJECT WERE:
1) MILWAUKEE GPS
2) WAUWATOSA W. GPS



REVISION DATE MAY 23 2012 JULY 11, 2012 SEPTEMBER 28, 2012 DECEMBER 17, 2012 APRIL 17, 2013 AUGUST 29, 2013 JANUARY 17, 2014	STATE OF WISCONSIN DEPARTMENT OF TRANSPORTATION APPROVED FOR THE DEPARTMENT DATE: Feb. 29, 2012 <i>Robert A. Duffek</i> (Signature)
---	--

HWY	BASIS OF EXISTING R/W	YEAR	WIDTH
IH 94	194-4(4)301	1960	VARIES
IH 94	194-4(2)301	1956	VARIES
W. SCHLINGER AVE. (RESOLUTION *17977 (DOC. 4837728))		1974	66'

COORDINATES AND BEARINGS SHOWN ON THIS PLAN ARE REFERENCED TO THE WISCONSIN COUNTY COORDINATE SYSTEM, MILWAUKEE COUNTY ZONE, NAD83 (2007) ADJUSTMENT. THE COORDINATES SHOWN ARE GRID COORDINATES AND ARE TO BE USED AS GRID OR GROUND VALUES ON THIS PLAN.

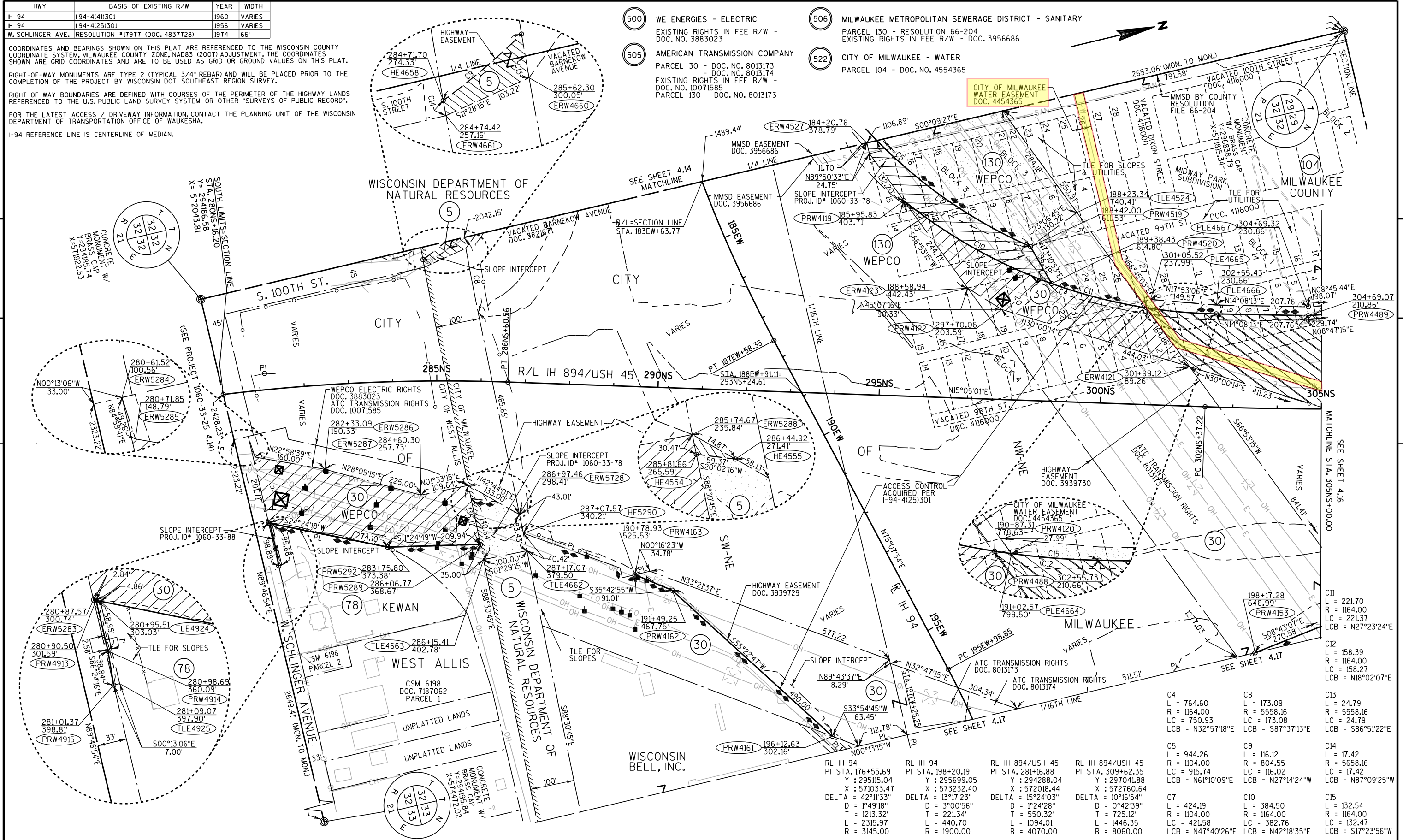
RIGHT-OF-WAY MONUMENTS ARE TYPE 2 (TYPICAL 3/4" REBAR) AND WILL BE PLACED PRIOR TO THE COMPLETION OF THE PROJECT BY WISCONSIN DOT SOUTHEAST REGION SURVEY.

RIGHT-OF-WAY BOUNDARIES ARE DEFINED WITH COURSES OF THE PERIMETER OF THE HIGHWAY LANDS REFERENCED TO THE U.S. PUBLIC LAND SURVEY SYSTEM OR OTHER "SURVEYS OF PUBLIC RECORD".

FOR THE LATEST ACCESS / DRIVEWAY INFORMATION, CONTACT THE PLANNING UNIT OF THE WISCONSIN DEPARTMENT OF TRANSPORTATION OFFICE OF WAUKESHA.

I-94 REFERENCE LINE IS CENTERLINE OF MEDIAN.

- 500 WE ENERGIES - ELECTRIC
EXISTING RIGHTS IN FEE R/W -
DOC. NO. 3883023
- 505 AMERICAN TRANSMISSION COMPANY
PARCEL 30 - DOC. NO. 8013173
- DOC. NO. 8013174
EXISTING RIGHTS IN FEE R/W -
DOC. NO. 10071585
PARCEL 130 - DOC. NO. 8013173
- 506 MILWAUKEE METROPOLITAN SEWERAGE DISTRICT - SANITARY
PARCEL 130 - RESOLUTION 66-204
EXISTING RIGHTS IN FEE R/W - DOC. 3956686
- 522 CITY OF MILWAUKEE - WATER
PARCEL 104 - DOC. NO. 4454365



4

4

REVISION DATE AUG. 29, 2013
SEP. 28, 2012 JAN. 17, 2014
DEC. 17, 2012
APR. 17, 2013

DATE JULY 11, 2012



HWY: IH 94
COUNTY: MILWAUKEE

STATE R/W PROJECT NUMBER 1060-33-24
CONSTRUCTION PROJECT NUMBER 1060-33-78, 1060-33-81
1060-33-88

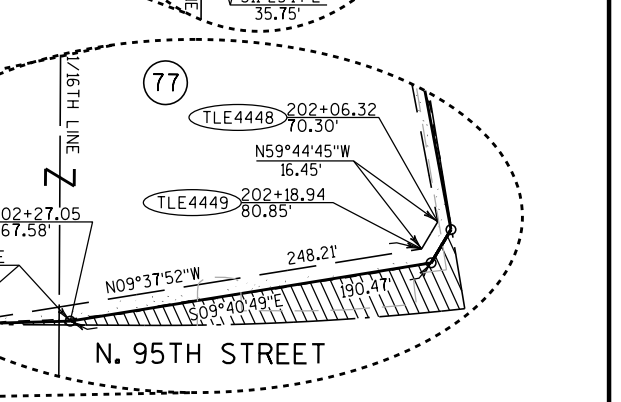
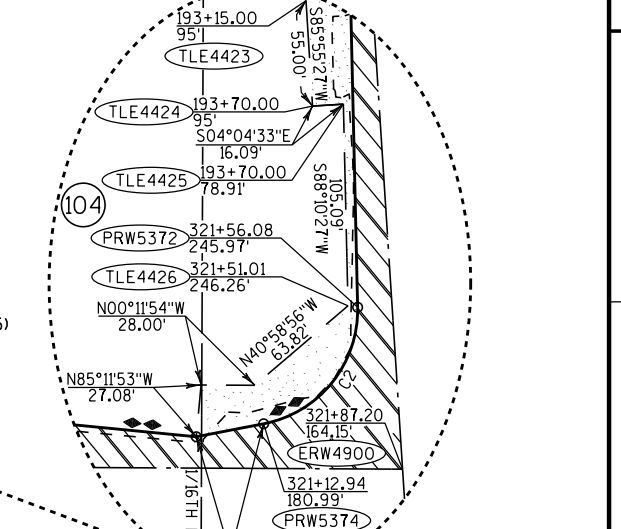
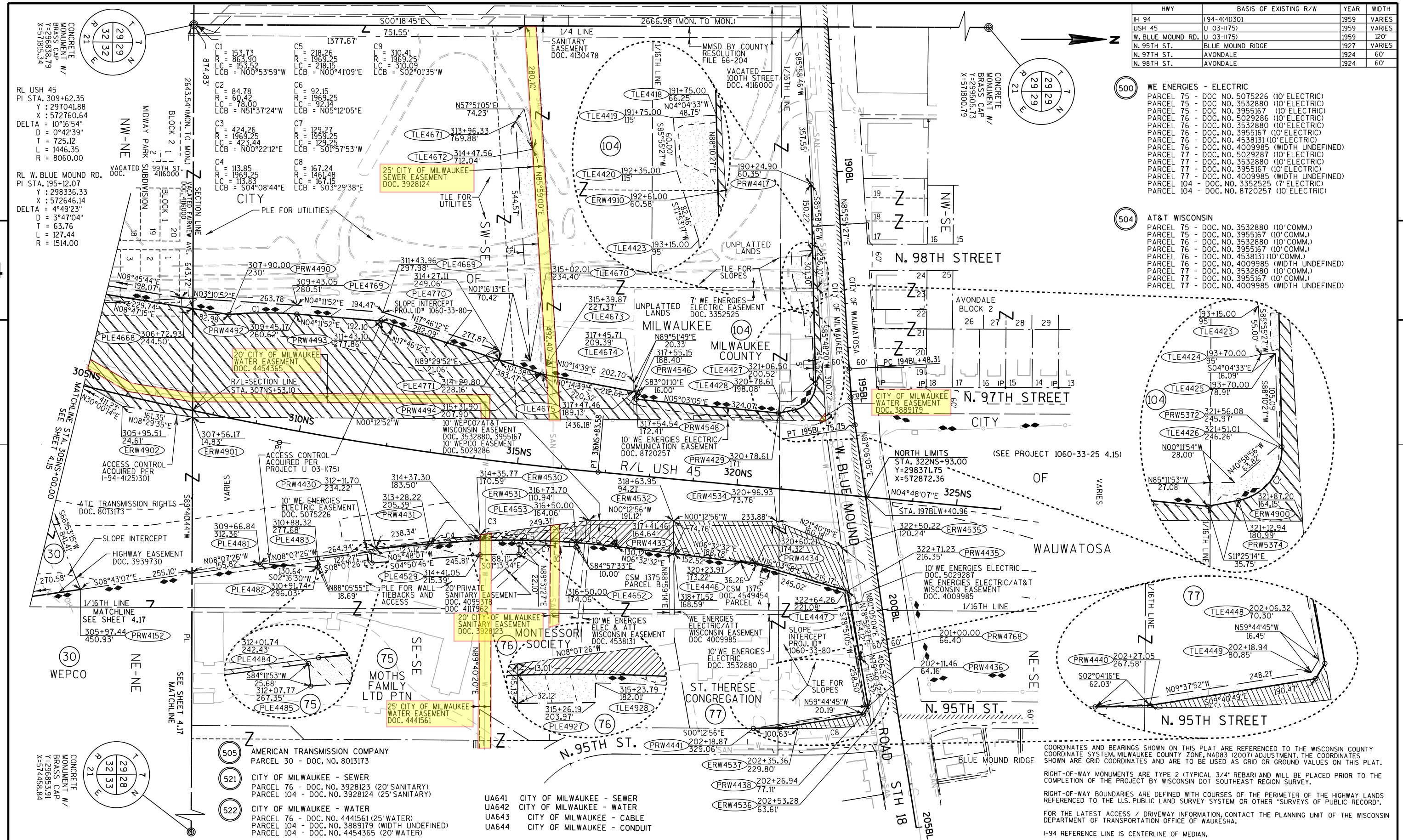
PLAT SHEET 4.15
PS&E SHEET E

C4 L = 764.60 R = 1164.00 LC = 750.93 LCB = N32°57'18"E	C8 L = 173.09 R = 5558.16 LC = 173.08 LCB = S87°37'13"E	C13 L = 24.79 R = 5558.16 LC = 24.79 LCB = S86°51'22"E
C5 L = 944.26 R = 1104.00 LC = 915.74 LCB = N61°10'09"E	C9 L = 116.12 R = 804.55 LC = 116.02 LCB = N27°14'24"W	C14 L = 17.42 R = 5658.16 LC = 17.42 LCB = N87°09'25"W
C7 L = 424.19 R = 1104.00 LC = 421.58 LCB = N47°40'26"E	C10 L = 384.50 R = 1164.00 LC = 382.76 LCB = N42°18'35"E	C15 L = 132.54 R = 1164.00 LC = 132.47 LCB = S17°23'56"W

HWY	BASIS OF EXISTING R/W	YEAR	WIDTH
IH 94	194-441301	1959	VARIES
USH 45	U 03-1175	1959	VARIES
W. BLUE MOUND RD.	U 03-1175	1959	120'
N. 95TH ST.	BLUE MOUND RIDGE	1927	VARIES
N. 97TH ST.	AVONDALE	1924	60'
N. 98TH ST.	AVONDALE	1924	60'

500 WE ENERGIES - ELECTRIC
 PARCEL 75 - DOC. NO. 5075226 (10' ELECTRIC)
 PARCEL 75 - DOC. NO. 3532880 (10' ELECTRIC)
 PARCEL 75 - DOC. NO. 3955167 (10' ELECTRIC)
 PARCEL 76 - DOC. NO. 5029286 (10' ELECTRIC)
 PARCEL 76 - DOC. NO. 3532880 (10' ELECTRIC)
 PARCEL 76 - DOC. NO. 3955167 (10' ELECTRIC)
 PARCEL 76 - DOC. NO. 4009985 (WIDTH UNDEFINED)
 PARCEL 77 - DOC. NO. 5029287 (10' ELECTRIC)
 PARCEL 77 - DOC. NO. 3532880 (10' ELECTRIC)
 PARCEL 77 - DOC. NO. 3955167 (10' ELECTRIC)
 PARCEL 77 - DOC. NO. 4009985 (WIDTH UNDEFINED)
 PARCEL 104 - DOC. NO. 3352525 (7' ELECTRIC)
 PARCEL 104 - DOC. NO. 8720257 (10' ELECTRIC)

504 AT&T WISCONSIN
 PARCEL 75 - DOC. NO. 3532880 (10' COMM.)
 PARCEL 75 - DOC. NO. 3955167 (10' COMM.)
 PARCEL 76 - DOC. NO. 3532880 (10' COMM.)
 PARCEL 76 - DOC. NO. 3955167 (10' COMM.)
 PARCEL 76 - DOC. NO. 4538131 (10' COMM.)
 PARCEL 76 - DOC. NO. 4009985 (WIDTH UNDEFINED)
 PARCEL 77 - DOC. NO. 3532880 (10' COMM.)
 PARCEL 77 - DOC. NO. 3955167 (10' COMM.)
 PARCEL 77 - DOC. NO. 4009985 (WIDTH UNDEFINED)



- 505 AMERICAN TRANSMISSION COMPANY
PARCEL 30 - DOC. NO. 8013173
- 521 CITY OF MILWAUKEE - SEWER
PARCEL 76 - DOC. NO. 3928123 (20' SANITARY)
PARCEL 104 - DOC. NO. 3928124 (25' SANITARY)
- 522 CITY OF MILWAUKEE - WATER
PARCEL 76 - DOC. NO. 4441561 (25' WATER)
PARCEL 104 - DOC. NO. 3889179 (WIDTH UNDEFINED)
PARCEL 104 - DOC. NO. 4454365 (20' WATER)
- UA641 CITY OF MILWAUKEE - SEWER
- UA642 CITY OF MILWAUKEE - WATER
- UA643 CITY OF MILWAUKEE - CABLE
- UA644 CITY OF MILWAUKEE - CONDUIT

COORDINATES AND BEARINGS SHOWN ON THIS PLAT ARE REFERENCED TO THE WISCONSIN COUNTY COORDINATE SYSTEM, MILWAUKEE COUNTY ZONE, NAD83 (2007) ADJUSTMENT. THE COORDINATES SHOWN ARE GRID COORDINATES AND ARE TO BE USED AS GRID OR GROUND VALUES ON THIS PLAT.

RIGHT-OF-WAY MONUMENTS ARE TYPE 2 (TYPICAL 3/4" REBAR) AND WILL BE PLACED PRIOR TO THE COMPLETION OF THE PROJECT BY WISCONSIN DOT SOUTHEAST REGION SURVEY.

RIGHT-OF-WAY BOUNDARIES ARE DEFINED WITH COURSES OF THE PERIMETER OF THE HIGHWAY LANDS REFERENCED TO THE U.S. PUBLIC LAND SURVEY SYSTEM OR OTHER "SURVEYS OF PUBLIC RECORD".

FOR THE LATEST ACCESS / DRIVEWAY INFORMATION, CONTACT THE PLANNING UNIT OF THE WISCONSIN DEPARTMENT OF TRANSPORTATION OFFICE OF WAUKESHA.

I-94 REFERENCE LINE IS CENTERLINE OF MEDIAN.

REVISION DATE AUG. 29, 2013 SEP. 28, 2012 DEC. 17, 2012 APR. 17, 2013	DATE JULY 11, 2012	SCALE, FEET 0 100 200	HWY: IH 94	STATE R/W PROJECT NUMBER 1060-33-24	PLAT SHEET 4.16
			COUNTY: MILWAUKEE	CONSTRUCTION PROJECT NUMBER 1060-33-81	PS&E SHEET E

COORDINATES AND BEARINGS SHOWN ON THIS PLAT ARE REFERENCED TO THE WISCONSIN COUNTY COORDINATE SYSTEM, MILWAUKEE COUNTY ZONE, NAD83 (2007) ADJUSTMENT. THE COORDINATES SHOWN ARE GRID COORDINATES AND ARE TO BE USED AS GRID OR GROUND VALUES ON THIS PLAT.

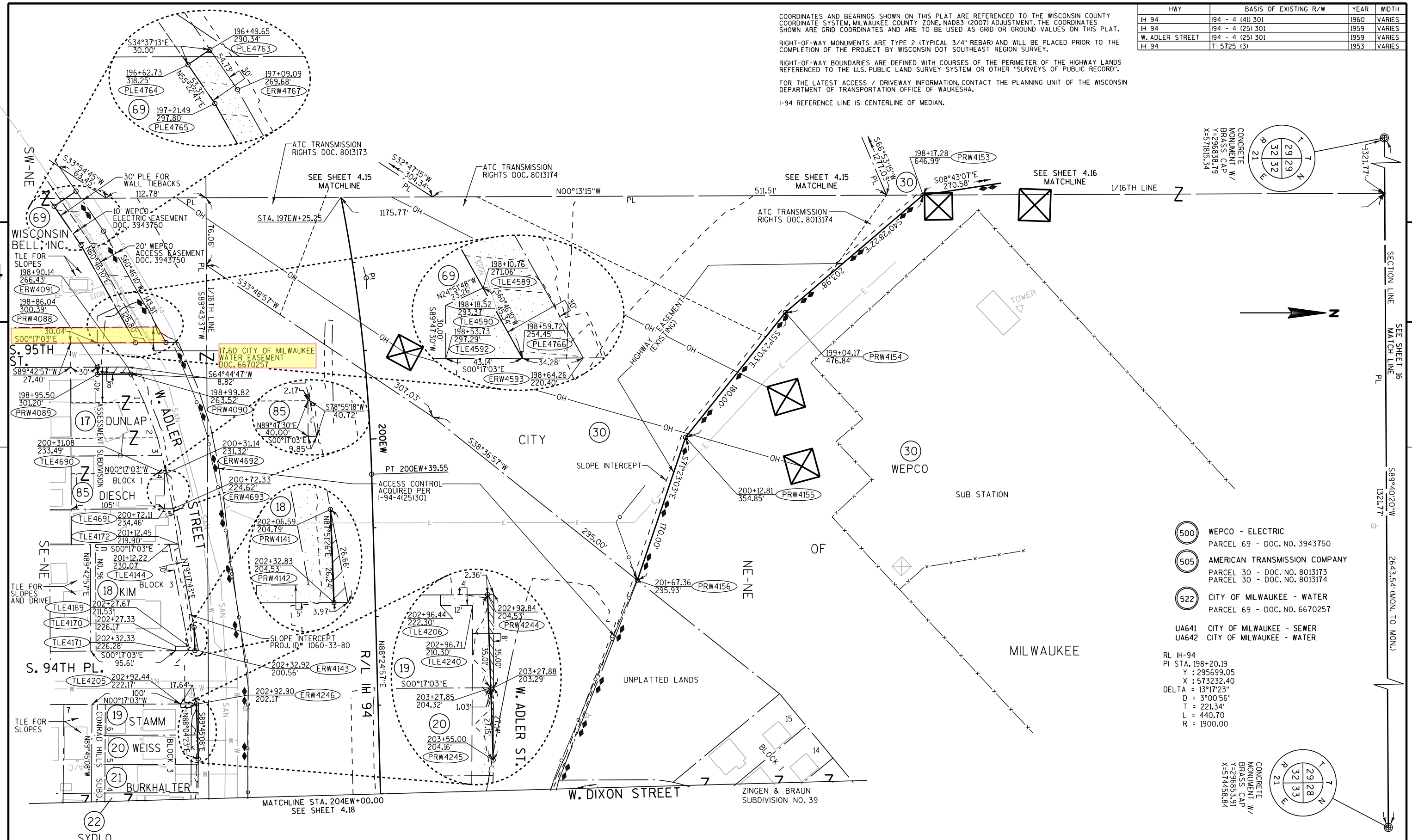
RIGHT-OF-WAY MONUMENTS ARE TYPE 2 (TYPICAL 3/4" REBAR) AND WILL BE PLACED PRIOR TO THE COMPLETION OF THE PROJECT BY WISCONSIN DOT SOUTHEAST REGION SURVEY.

RIGHT-OF-WAY BOUNDARIES ARE DEFINED WITH COURSES OF THE PERIMETER OF THE HIGHWAY LANDS REFERENCED TO THE U.S. PUBLIC LAND SURVEY SYSTEM OR OTHER "SURVEYS OF PUBLIC RECORD".

FOR THE LATEST ACCESS / DRIVEWAY INFORMATION, CONTACT THE PLANNING UNIT OF THE WISCONSIN DEPARTMENT OF TRANSPORTATION OFFICE OF WAUKESHA.

I-94 REFERENCE LINE IS CENTERLINE OF MEDIAN.

HWY	BASIS OF EXISTING R/W	YEAR	WIDTH
IH 94	194 - 4 (41) 301	1960	VARIABLES
IH 94	194 - 4 (25) 301	1959	VARIABLES
W. ADLER STREET	194 - 4 (25) 301	1959	VARIABLES
IH 94	T 5725 (3)	1953	VARIABLES



- 500 WEPCO - ELECTRIC
PARCEL 69 - DOC. NO. 3943750
 - 505 AMERICAN TRANSMISSION COMPANY
PARCEL 30 - DOC. NO. 8013173
PARCEL 30 - DOC. NO. 8013174
 - 522 CITY OF MILWAUKEE - WATER
PARCEL 69 - DOC. NO. 6670257
 - UA641 CITY OF MILWAUKEE - SEWER
 - UA642 CITY OF MILWAUKEE - WATER
- RL IH-94
PI STA. 198+20.19
Y : 295699.05
X : 573232.40
DELTA = 13°17'23"
D = 3°00'56"
T = 221.34'
L = 440.70
R = 1900.00

REVISION DATE AUG. 29, 2013 SEP. 28, 2012 DEC. 17, 2012 APR. 17, 2013	DATE JULY 11, 2012	SCALE, FEET 0 50 100	HWY: IH 94	STATE R/W PROJECT NUMBER 1060-33-24	PLAT SHEET 4.17
			COUNTY: MILWAUKEE	CONSTRUCTION PROJECT NUMBER 1060-33-81	PS&E SHEET E

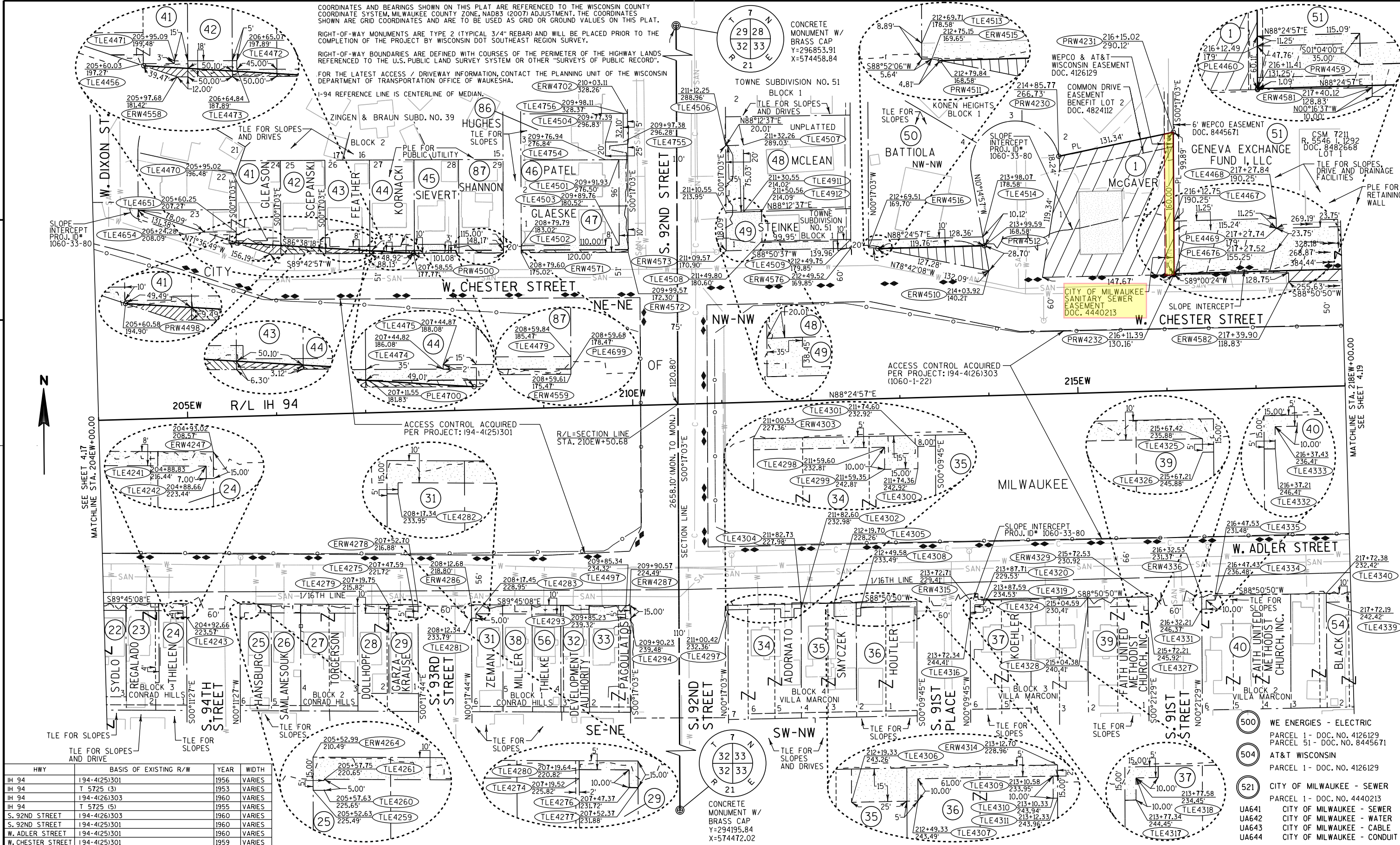
COORDINATES AND BEARINGS SHOWN ON THIS PLAT ARE REFERENCED TO THE WISCONSIN COUNTY COORDINATE SYSTEM, MILWAUKEE COUNTY ZONE, NAD83 (2007) ADJUSTMENT. THE COORDINATES SHOWN ARE GRID COORDINATES AND ARE TO BE USED AS GRID OR GROUND VALUES ON THIS PLAT.

RIGHT-OF-WAY MONUMENTS ARE TYPE 2 (TYPICAL 3/4" REBAR) AND WILL BE PLACED PRIOR TO THE COMPLETION OF THE PROJECT BY WISCONSIN DOT SOUTHEAST REGION SURVEY.

RIGHT-OF-WAY BOUNDARIES ARE DEFINED WITH COURSES OF THE PERIMETER OF THE HIGHWAY LANDS REFERENCED TO THE U.S. PUBLIC LAND SURVEY SYSTEM OR OTHER "SURVEYS OF PUBLIC RECORD".

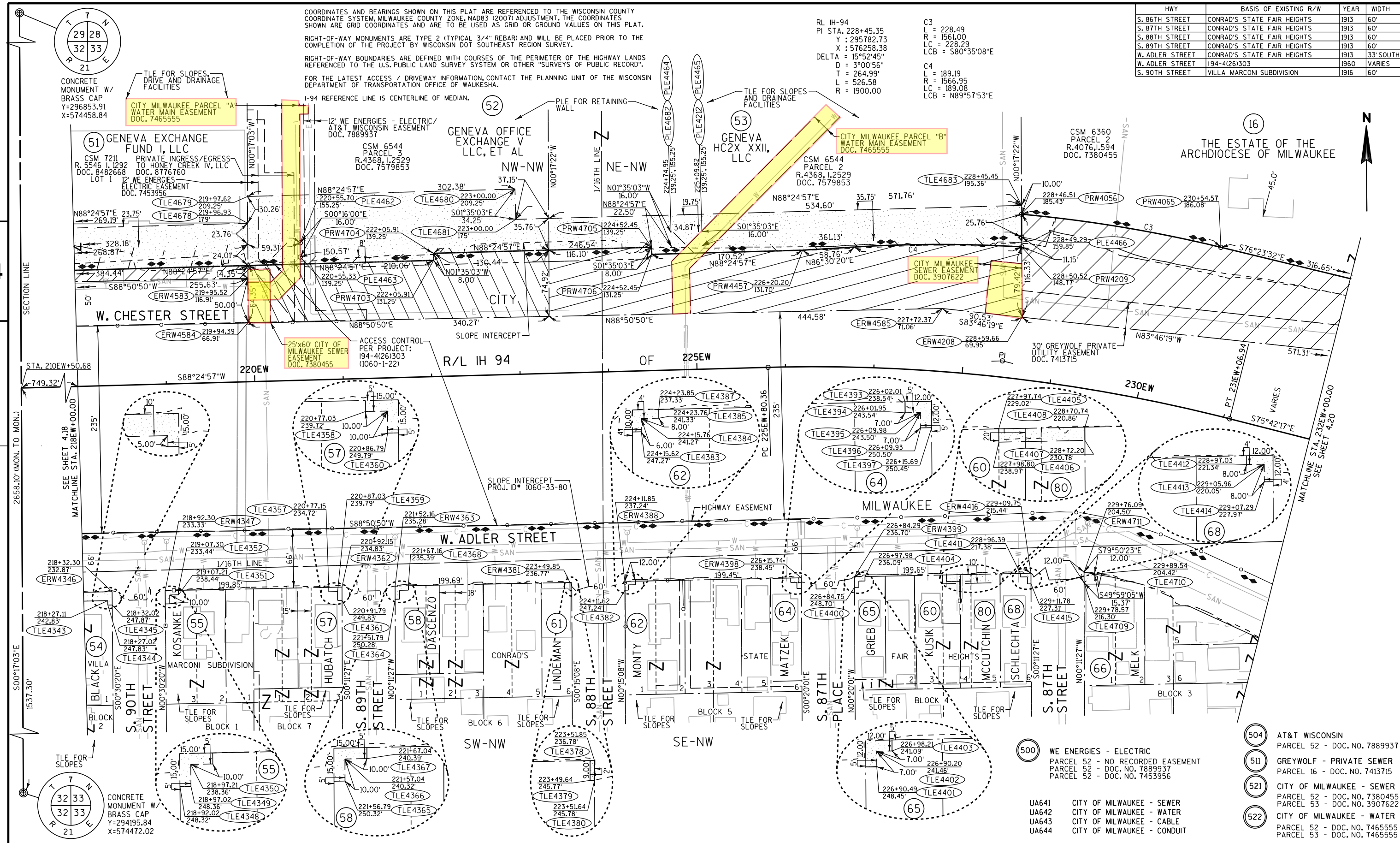
FOR THE LATEST ACCESS / DRIVEWAY INFORMATION, CONTACT THE PLANNING UNIT OF THE WISCONSIN DEPARTMENT OF TRANSPORTATION OFFICE OF WAUKESHA.

I-94 REFERENCE LINE IS CENTERLINE OF MEDIAN.



HWY	BASIS OF EXISTING R/W	YEAR	WIDTH
IH 94	194-4(25)301	1956	VARIES
IH 94	T 5725 (3)	1953	VARIES
IH 94	194-4(26)303	1960	VARIES
IH 94	T 5725 (5)	1955	VARIES
S. 92ND STREET	194-4(26)303	1960	VARIES
S. 92ND STREET	194-4(25)301	1960	VARIES
W. ADLER STREET	194-4(25)301	1960	VARIES
W. CHESTER STREET	194-4(25)301	1959	VARIES

REVISION DATE DEC. 17, 2012 MAY 23, 2012 APR. 17, 2013 JULY 11, 2012 AUG. 29, 2013 SEP. 28, 2012 JAN. 17, 2014	DATE FEB. 29, 2012	SCALE, FEET 0 50 100	HWY: IH 94 COUNTY: MILWAUKEE	STATE R/W PROJECT NUMBER 1060-33-24 CONSTRUCTION PROJECT NUMBER 1060-33-81	PLAT SHEET 4.18 PS&E SHEET E
---	-----------------------	-------------------------	---------------------------------	---	---------------------------------



COORDINATES AND BEARINGS SHOWN ON THIS PLAT ARE REFERENCED TO THE WISCONSIN COUNTY COORDINATE SYSTEM, MILWAUKEE COUNTY ZONE, NAD83 (2007) ADJUSTMENT. THE COORDINATES SHOWN ARE GRID COORDINATES AND ARE TO BE USED AS GRID OR GROUND VALUES ON THIS PLAT.

RIGHT-OF-WAY MONUMENTS ARE TYPE 2 (TYPICAL 3/4" REBAR) AND WILL BE PLACED PRIOR TO THE COMPLETION OF THE PROJECT BY WISCONSIN DOT SOUTHEAST REGION SURVEY.

RIGHT-OF-WAY BOUNDARIES ARE DEFINED WITH COURSES OF THE PERIMETER OF THE HIGHWAY LANDS REFERENCED TO THE U.S. PUBLIC LAND SURVEY SYSTEM OR OTHER "SURVEYS OF PUBLIC RECORD".

FOR THE LATEST ACCESS / DRIVEWAY INFORMATION, CONTACT THE PLANNING UNIT OF THE WISCONSIN DEPARTMENT OF TRANSPORTATION OFFICE OF WAUKESHA.

I-94 REFERENCE LINE IS CENTERLINE OF MEDIAN.

RL IH-94
 PI STA. 228+45.35
 Y : 295782.73
 X : 576258.38
 DELTA = 15°52'45"
 D = 3°00'56"
 T = 264.99'
 L = 526.58
 R = 1900.00

C3
 L = 228.49
 R = 1561.00
 LC = 228.29
 LCB = S80°35'08"E

C4
 L = 189.19
 R = 1566.95
 LC = 189.08
 LCB = N89°57'53"E

HWY	BASIS OF EXISTING R/W	YEAR	WIDTH
S. 86TH STREET	CONRAD'S STATE FAIR HEIGHTS	1913	60'
S. 87TH STREET	CONRAD'S STATE FAIR HEIGHTS	1913	60'
S. 88TH STREET	CONRAD'S STATE FAIR HEIGHTS	1913	60'
S. 89TH STREET	CONRAD'S STATE FAIR HEIGHTS	1913	60'
W. ADLER STREET	CONRAD'S STATE FAIR HEIGHTS	1913	33' SOUTH
W. ADLER STREET	194-4(26)303	1960	VARIES
S. 90TH STREET	VILLA MARCONI SUBDIVISION	1916	60'



REVISION DATE JAN. 17, 2014
 DEC. 17, 2012
 APR. 17, 2013
 AUG. 29, 2013

DATE SEPT 28, 2012

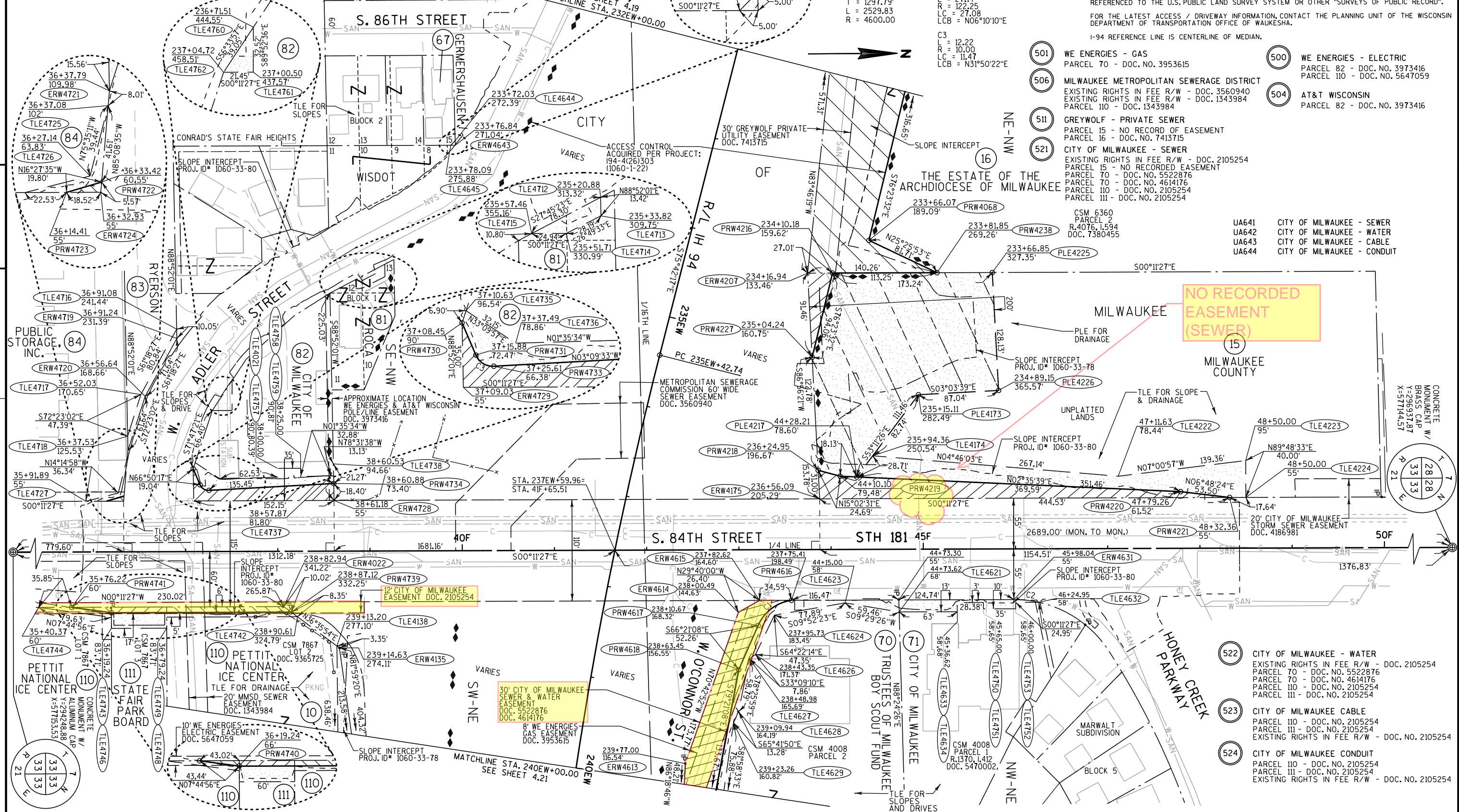
SCALE, FEET
 0 50 100

HWY: IH 94
 COUNTY: MILWAUKEE

STATE R/W PROJECT NUMBER 1060-33-24
 CONSTRUCTION PROJECT NUMBER 1060-33-81

PLAT SHEET 4.19
 PS&E SHEET E

HWY	BASIS OF EXISTING R/W	YEAR	WIDTH
IH 94	194-4(26)303 (1060-1-22)	1970	VARIES
S. 84TH STREET	194-4(26)303 (1060-1-22)	1970	VARIES
S. 86TH STREET	CONRAD'S STATE FAIR HEIGHTS	1913	60'
W. ADLER STREET	194-4(26)303 (1060-1-22)	1970	VARIES
S. 84TH STREET	CITY RESOLUTION #47-21-b (DOC. 3313218)	1954	55' EAST



RL IH-94
 PI STA. 248+40.53
 Y : 295289.25
 X : 578195.08
 DELTA = 31°30'38"
 D = 1°14'44"
 T = 1297.79
 L = 2529.83
 R = 4600.00

C1
 L = 47.37
 R = 46.42
 LC = 45.35
 LCB = S37°06'47"E

C2
 L = 27.14
 R = 122.25
 LC = 27.08
 LCB = N06°10'10"E

C3
 L = 12.22
 R = 10.00
 LC = 11.47
 LCB = N31°50'22"E

COORDINATES AND BEARINGS SHOWN ON THIS PLAT ARE REFERENCED TO THE WISCONSIN COUNTY COORDINATE SYSTEM, MILWAUKEE COUNTY ZONE, NAD83 (2007) ADJUSTMENT. THE COORDINATES SHOWN ARE GRID COORDINATES AND ARE TO BE USED AS GRID OR GROUND VALUES ON THIS PLAT.

RIGHT-OF-WAY MONUMENTS ARE TYPE 2 (TYPICAL 3/4" REBAR) AND WILL BE PLACED PRIOR TO THE COMPLETION OF THE PROJECT BY WISCONSIN DOT SOUTHEAST REGION SURVEY.

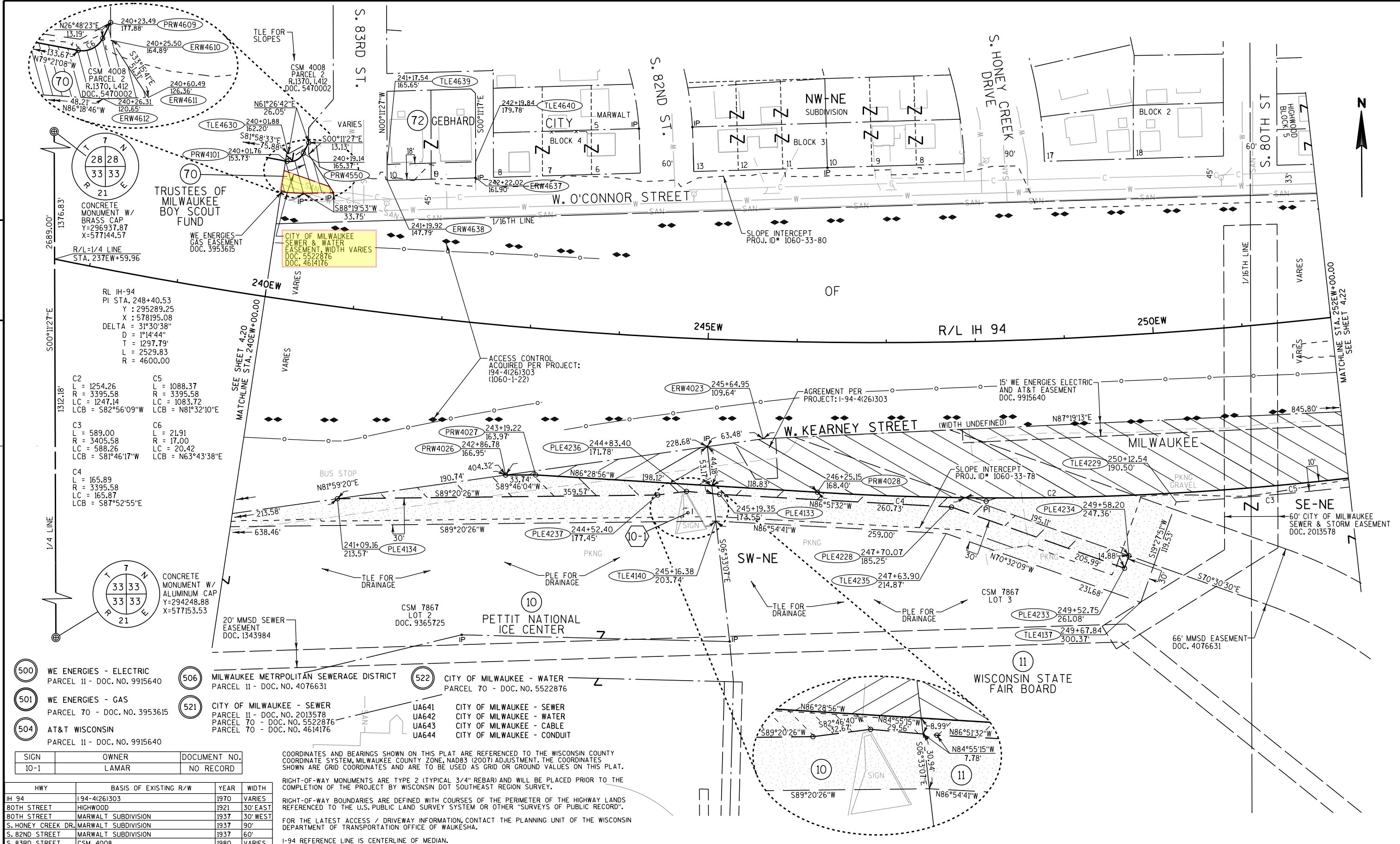
RIGHT-OF-WAY BOUNDARIES ARE DEFINED WITH COURSES OF THE PERIMETER OF THE HIGHWAY LANDS REFERENCED TO THE U.S. PUBLIC LAND SURVEY SYSTEM OR OTHER "SURVEYS OF PUBLIC RECORD".

FOR THE LATEST ACCESS / DRIVEWAY INFORMATION, CONTACT THE PLANNING UNIT OF THE WISCONSIN DEPARTMENT OF TRANSPORTATION OFFICE OF WAUKESHA.

I-94 REFERENCE LINE IS CENTERLINE OF MEDIAN.

- 501 WE ENERGIES - GAS
PARCEL 70 - DOC. NO. 3953615
- 506 MILWAUKEE METROPOLITAN SEWERAGE DISTRICT
EXISTING RIGHTS IN FEE R/W - DOC. 3560940
EXISTING RIGHTS IN FEE R/W - DOC. 1343984
PARCEL 110 - DOC. 1343984
- 511 GREYWOLF - PRIVATE SEWER
PARCEL 15 - NO RECORD OF EASEMENT
PARCEL 16 - DOC. NO. 7413715
- 521 CITY OF MILWAUKEE - SEWER
EXISTING RIGHTS IN FEE R/W - DOC. 2105254
PARCEL 15 - NO RECORDED EASEMENT
PARCEL 70 - DOC. NO. 5522876
PARCEL 70 - DOC. NO. 4614176
PARCEL 110 - DOC. NO. 2105254
PARCEL 111 - DOC. NO. 2105254
- 500 WE ENERGIES - ELECTRIC
PARCEL 82 - DOC. NO. 3973416
PARCEL 110 - DOC. NO. 5647059
- 504 AT&T WISCONSIN
PARCEL 82 - DOC. NO. 3973416
- UA641 CITY OF MILWAUKEE - SEWER
- UA642 CITY OF MILWAUKEE - WATER
- UA643 CITY OF MILWAUKEE - CABLE
- UA644 CITY OF MILWAUKEE - CONDUIT

REVISION DATE DEC. 17, 2012 APR. 17, 2013 AUG. 29, 2013	JAN. 17, 2014	DATE SEP. 28, 2012	SCALE, FEET 0 50 100	HWY: IH 94	STATE R/W PROJECT NUMBER 1060-33-24	PLAT SHEET 4.20
				COUNTY: MILWAUKEE	CONSTRUCTION PROJECT NUMBER 1060-33-81, 1060-33-89 1060-33-75	PS&E SHEET E



- (500) WE ENERGIES - ELECTRIC PARCEL 11 - DOC. NO. 9915640
- (501) WE ENERGIES - GAS PARCEL 70 - DOC. NO. 3953615
- (504) AT&T WISCONSIN PARCEL 11 - DOC. NO. 9915640
- (506) MILWAUKEE METROPOLITAN SEWERAGE DISTRICT PARCEL 11 - DOC. NO. 4076631
- (521) CITY OF MILWAUKEE - SEWER PARCEL 11 - DOC. NO. 2013578
PARCEL 70 - DOC. NO. 5522876
PARCEL 70 - DOC. NO. 4614176
- (522) CITY OF MILWAUKEE - WATER PARCEL 70 - DOC. NO. 5522876
- UA641 CITY OF MILWAUKEE - SEWER
- UA642 CITY OF MILWAUKEE - WATER
- UA643 CITY OF MILWAUKEE - CABLE
- UA644 CITY OF MILWAUKEE - CONDUIT

SIGN	OWNER	DOCUMENT NO.
10-1	LAMAR	NO RECORD

COORDINATES AND BEARINGS SHOWN ON THIS PLAT ARE REFERENCED TO THE WISCONSIN COUNTY COORDINATE SYSTEM, MILWAUKEE COUNTY ZONE, NAD83 (2007) ADJUSTMENT. THE COORDINATES SHOWN ARE GRID COORDINATES AND ARE TO BE USED AS GRID OR GROUND VALUES ON THIS PLAT.

RIGHT-OF-WAY MONUMENTS ARE TYPE 2 (TYPICAL 3/4" REBAR) AND WILL BE PLACED PRIOR TO THE COMPLETION OF THE PROJECT BY WISCONSIN DOT SOUTHEAST REGION SURVEY.

RIGHT-OF-WAY BOUNDARIES ARE DEFINED WITH COURSES OF THE PERIMETER OF THE HIGHWAY LANDS REFERENCED TO THE U.S. PUBLIC LAND SURVEY SYSTEM OR OTHER "SURVEYS OF PUBLIC RECORD".

FOR THE LATEST ACCESS / DRIVEWAY INFORMATION, CONTACT THE PLANNING UNIT OF THE WISCONSIN DEPARTMENT OF TRANSPORTATION OFFICE OF WAUKESHA.

I-94 REFERENCE LINE IS CENTERLINE OF MEDIAN.

HWY	BASIS OF EXISTING R/W	YEAR	WIDTH
IH 94	194-4(26)303	1970	VARIES
80TH STREET	HIGHWOOD	1921	30' EAST
80TH STREET	MARWALT SUBDIVISION	1937	30' WEST
S. HONEY CREEK DR.	MARWALT SUBDIVISION	1937	90'
S. 82ND STREET	MARWALT SUBDIVISION	1937	60'
S. 83RD STREET	CSM 4008	1980	VARIES

REVISION DATE DEC. 17, 2012 APR. 17, 2013 AUG. 29, 2013	JAN. 17, 2014	DATE SEP. 28, 2012	SCALE, FEET 0 50 100	HWY: IH 94 COUNTY: MILWAUKEE	STATE R/W PROJECT NUMBER 1060-33-24 CONSTRUCTION PROJECT NUMBER 1060-33-81 1060-33-79	PLAT SHEET 4.21 PS&E SHEET	E
--	---------------	-----------------------	-------------------------	---------------------------------	---	-------------------------------	---