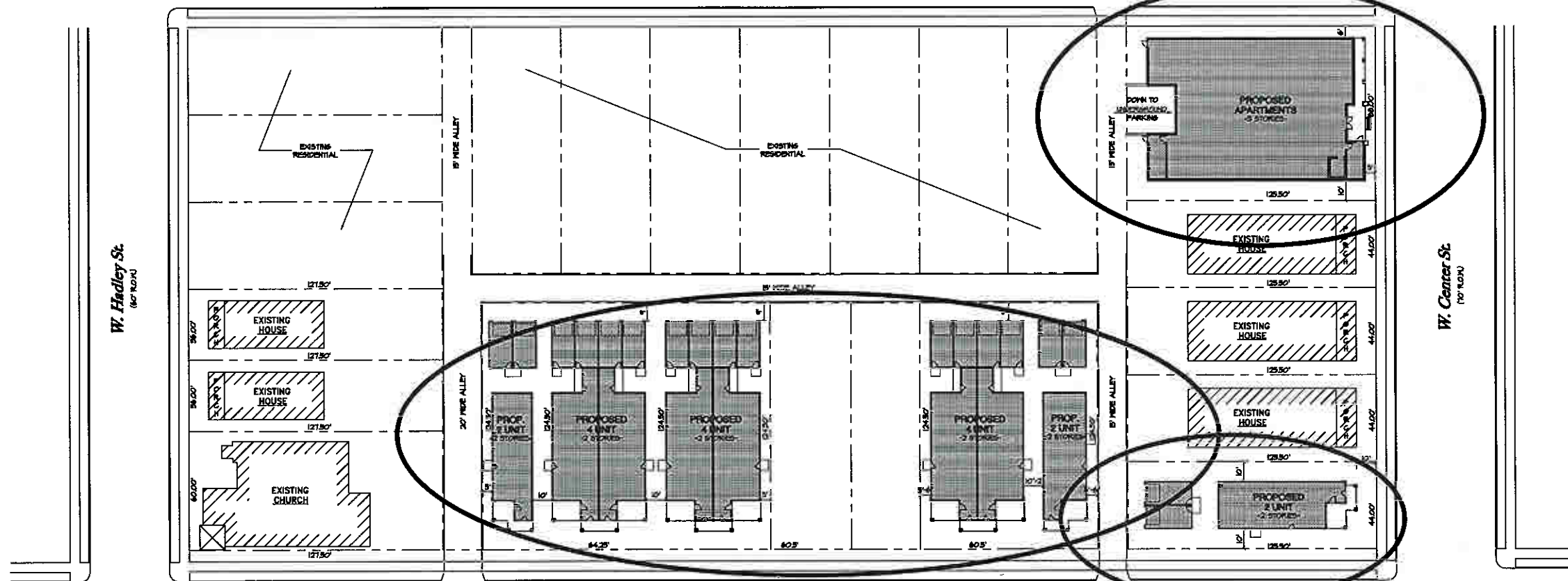


United House 2500 W. Center St.

N. 25th St.
(66' R.O.W.)

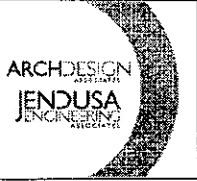


N. 26th St.
(66' R.O.W.)

United Homes 26th Street. (not a part of GPD application)

① SITE PLAN

SCALE: 1"=30'-0"



4615 Vocolson Rd.
Suite 500
Harland, WI 53029
Phone: 262.369.0717
Fax: 262.369.7740

REVISIONS

Proposed Development for:
United Home/ Homes

W. Center St. @ N. 25th
N. 26th @ W. Center St.
Milwaukee, Wisconsin

SHEET TITLE
Site Plan

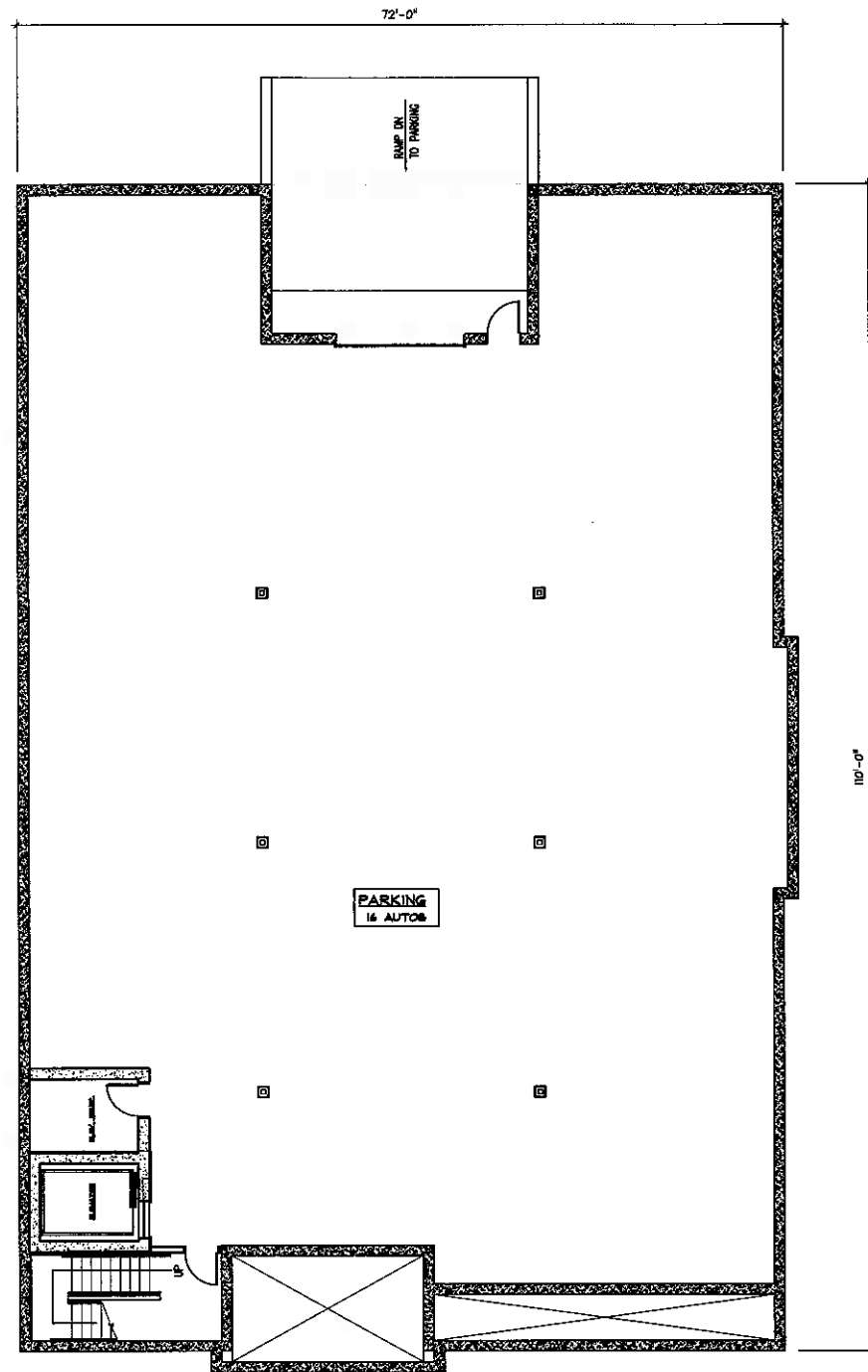
PROJECT NO. 0046

DATE 19 DECEMBER 2006

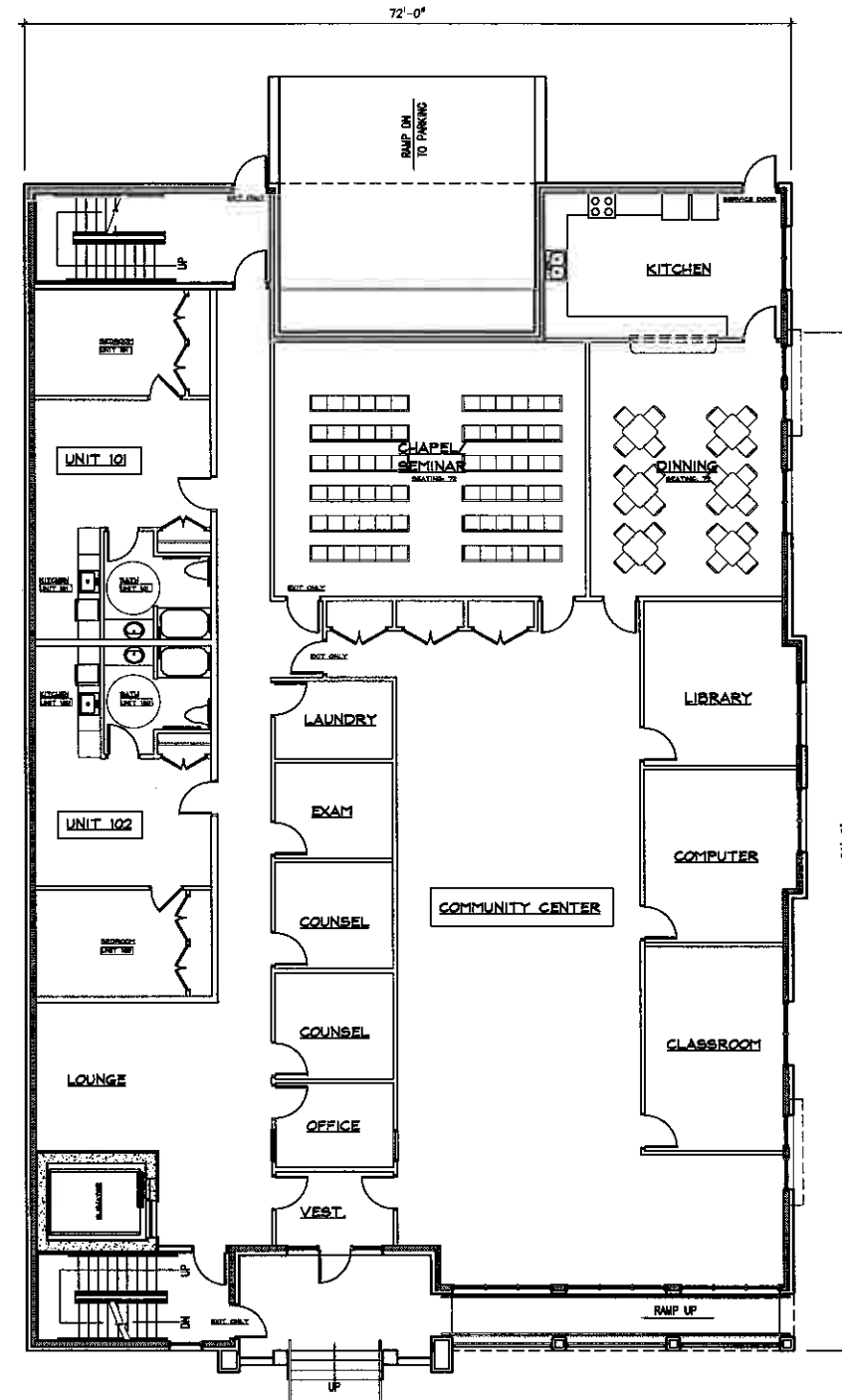
CHECKED BY RAW

DRAWN BY RAW

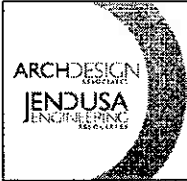
SHEET
SP.1



① BASEMENT FLOOR PLAN
SCALE: 1/8"=1'-0"



② 1st FLOOR PLAN
SCALE: 1/8"=1'-0"



4615 Vostokan Rd.
Suite 500
Herland, WI 53029
Phone: 262.369.0717
Fax: 262.369.7740

REVISIONS

Proposed Development for:
**United House
Supportive Housing**

W. Center St. @ N. 25th St.
Milwaukee, Wisconsin

SHEET TITLE
24 Unit Floor Plans

PROJECT NO. 0048

DATE 19 DECEMBER 2008

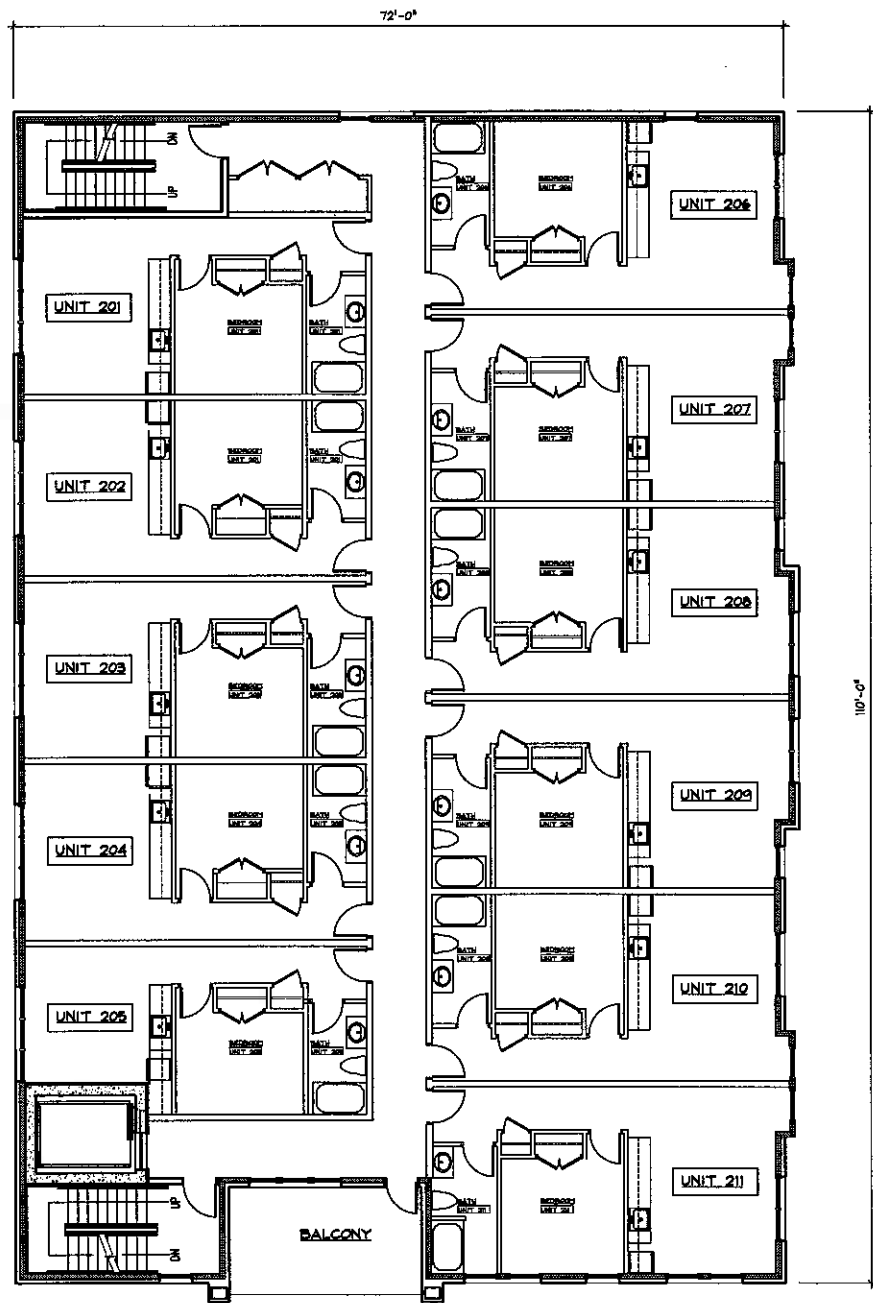
CHECKED BY RAW

DRAWN BY RAW

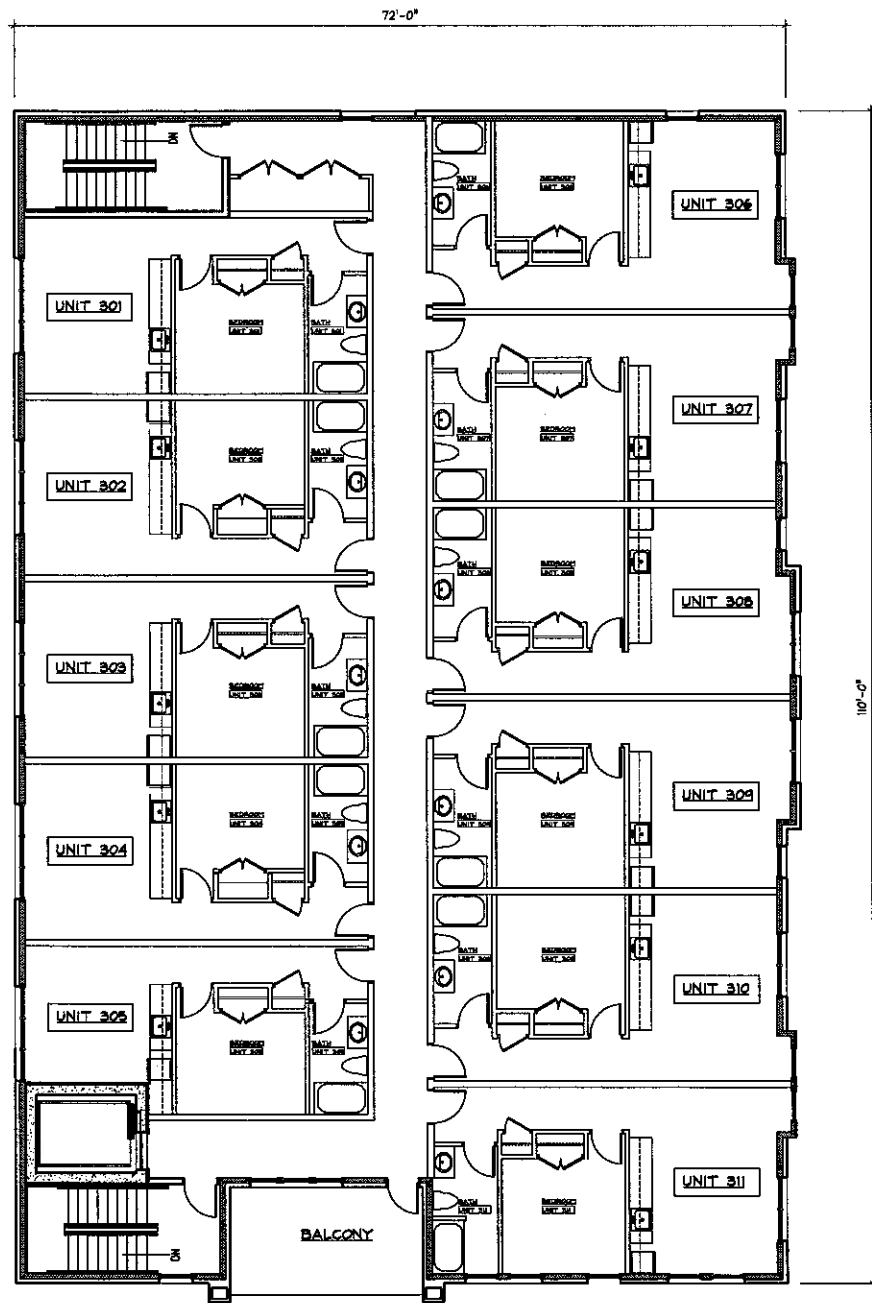
SHEET
A.2



 ARCHDESIGN
 JENDUSA
 4615 Vetselen Rd.
 Suite 500
 Harland, WI 53029
 Phone: 262.369.0717
 Fax: 262.369.7740



① SECOND FLOOR PLAN
SCALE: 1/8"=1'-0"



② THIRD FLOOR PLAN
SCALE: 1/8"=1'-0"

REVISIONS

Proposed Development for:
**United House
Supportive Housing**

W. Center St. @ N. 25th St.
Milwaukee, Wisconsin

SHEET TITLE
24 Unit Floor Plans

PROJECT NO. 0048

DATE 19 DECEMBER 2008

CHECKED BY RAW

DRAWN BY RAW

SHEET
A.3