



Certificate of Appropriateness

Milwaukee Historic Preservation Commission/200 E. Wells Street/Milwaukee, WI 53202/phone 414-286-5712/fax 414-286-3004

Property

2604 N. LAKE DR.

North Point North Historic District

Description of work

Applicant proposes to change the straight walkway that leads from the front porch to the sidewalk. The proposal will move the walkway away from the neighbor's driveway and allow for more plantings. The current walk will be removed and the new walk will turn to the south parallel to the front of the house to the point of the front bay and then descend to the sidewalk.

Features of the new walkway include:

Rebuilding the former wing walls at the front steps into planters

Building a new walkway of Beldon 760 brick bordered with Beldon sand cast pavers

Incorporating blue stone steps at 3 locations

Building a low brick planter with stone cap that will border the north property line and turn to run parallel to the sidewalk.

Date issued

8/25/2015

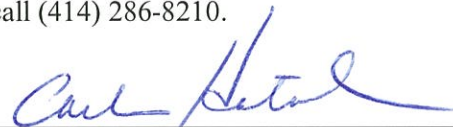
PTS ID 105279 COA

In accordance with the provisions of Section 320-21 (11) and (12) of the Milwaukee Code of Ordinances, the Milwaukee Historic Preservation Commission has issued a certificate of appropriateness for the work listed above. The work was found to be consistent with preservation guidelines. The following conditions apply to this certificate of appropriateness:

The wingwalls planters at the porch will be constructed of Endicott Desert Ironspot Smooth brick to match the house. The other planters will be built of the same brick. All will be topped by limestone caps. The new wingwall planters will be the same height as the former wingwalls. The low planters will be approximately 16 inches high and the new walkway will be approximately 5 feet wide. The proposal will not change the grade of the front lawn.

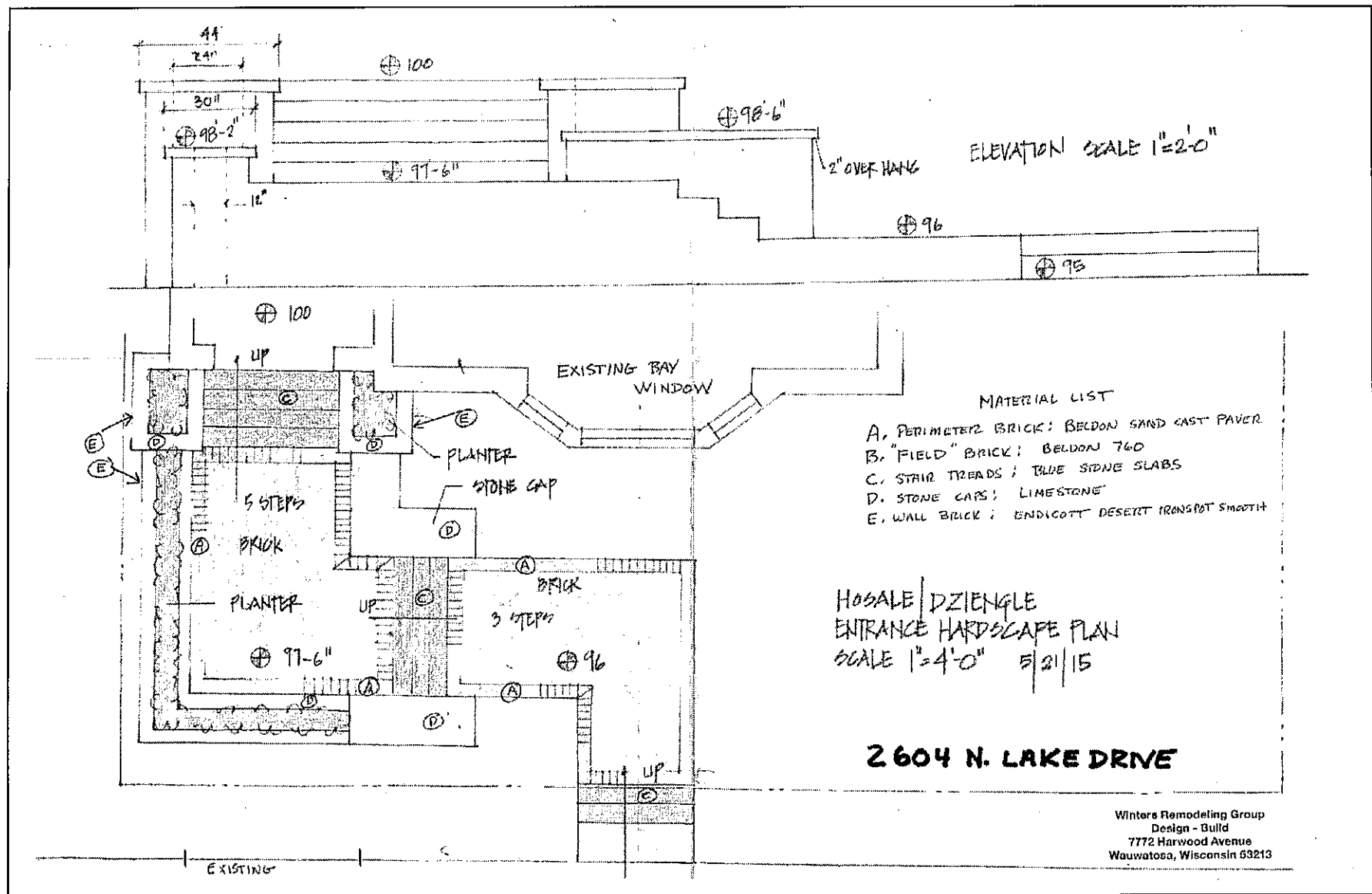
All work must be done in a craftsman-like manner, and must be completed within one year of the date this certificate was issued. Staff must approve any changes or additions to this certificate before work begins. Work that is not completed in accordance with this certificate may be subject to correction orders or citations. If you require technical assistance, please contact Carlen Hatala of the Historic Preservation staff as follows: Phone: (414) 286-5722 Fax: (414) 286-3004 E-mail: chatal@milwaukee.gov.

If permits are required, you are responsible for obtaining them from the Milwaukee Development Center. If you have questions about permit requirements, please consult the Development Center's web site, www.milwaukee.gov/build, or call (414) 286-8210.



City of Milwaukee Historic Preservation Staff

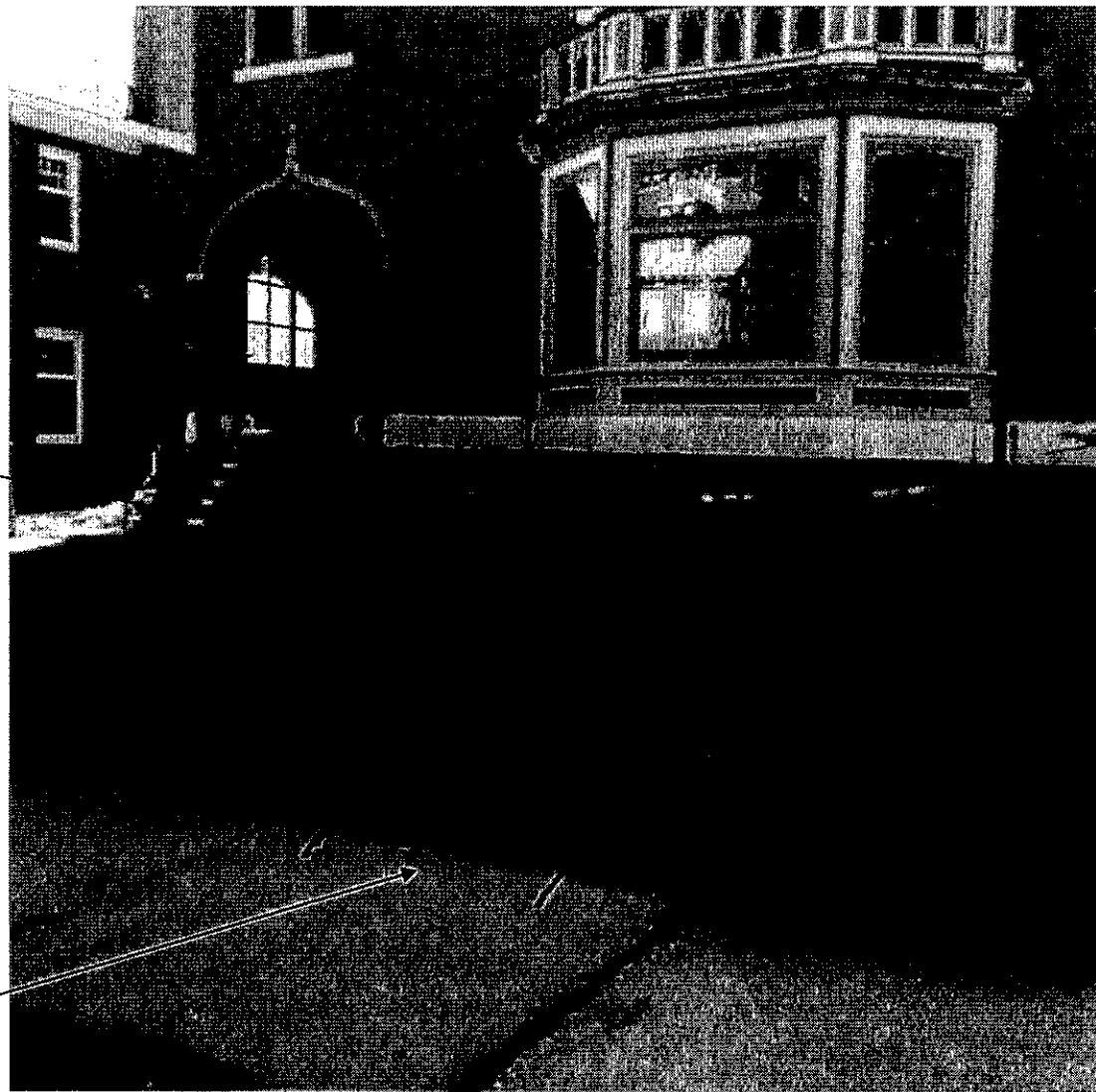
Copies to: Development Center, Ald. Nik Kovac, Contractor, Inspector Jason Golec (286-2553)



Plan for the new walkway (approximately 5 feet wide) and planters (approximately 16 inches high).

**New walkway
will go here.**

**New steps to go
here.**



*THE NEW APPROACH WILL BE
CENTERED ON BAY WINDOW*

**New wingwall
planters to go here**

**New brick planter
will go here**





Front grade of lawn will not change.