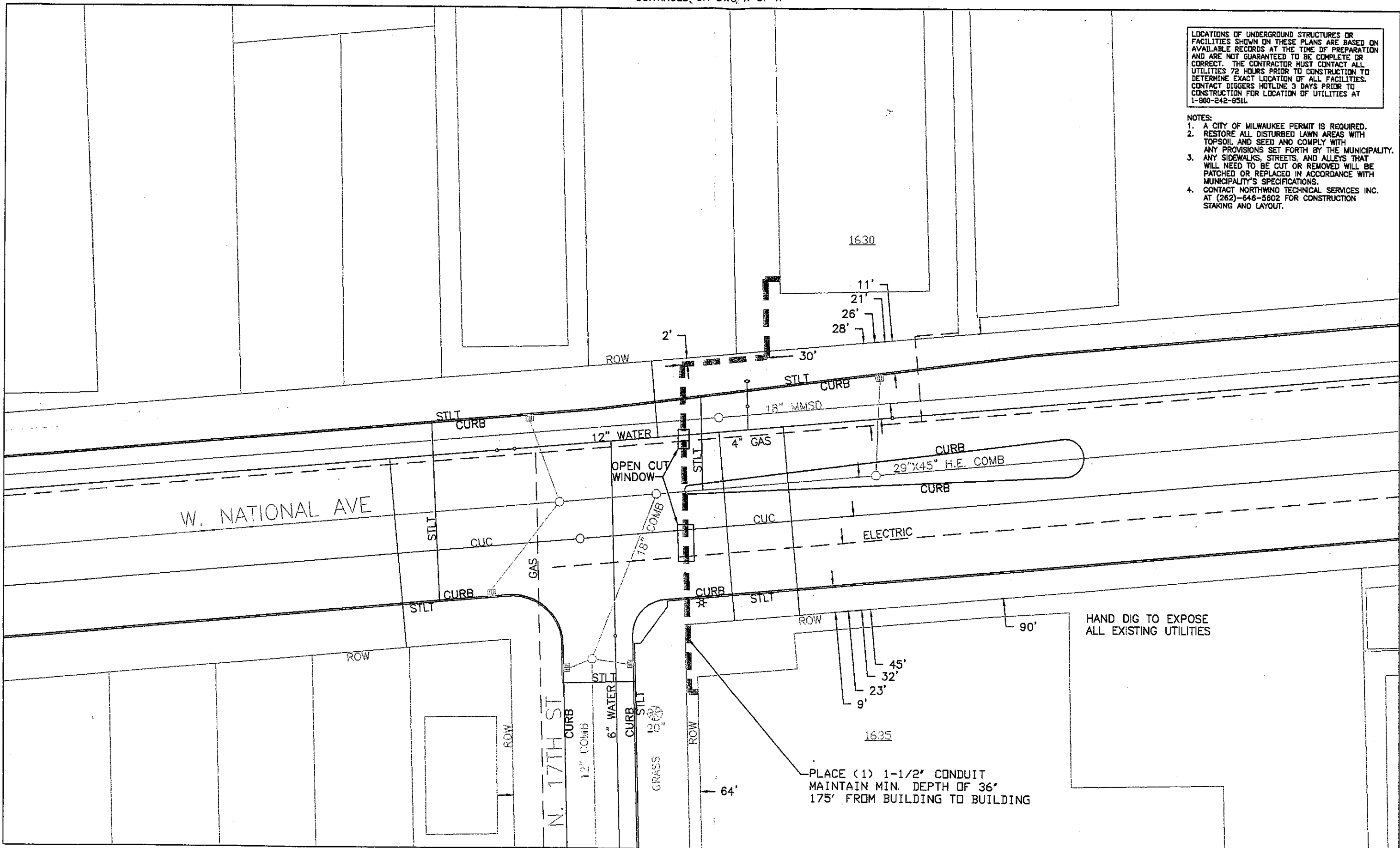


LOCATIONS OF UNDERGROUND STRUCTURES OR FACILITIES SHOWN ON THESE PLANS ARE BASED ON AVAILABLE RECORDS AT THE TIME OF PREPARATION AND ARE NOT GUARANTEED TO BE COMPLETE OR CORRECT. THE CONTRACTOR MUST CONTACT ALL UTILITIES 72 HOURS PRIOR TO CONSTRUCTION TO DETERMINE EXACT LOCATION OF ALL FACILITIES. CONTACT DIGGERS HOTLINE 3 DAYS PRIOR TO CONSTRUCTION FOR LOCATION OF UTILITIES AT 1-800-242-8511.

- NOTES:
1. A CITY OF MILWAUKEE PERMIT IS REQUIRED.
 2. RESTORE ALL DISTURBED LAWN AREAS WITH TOPSOIL AND SEED AND COMPLY WITH ANY PROVISIONS SET FORTH BY THE MUNICIPALITY.
 3. ANY SIDEWALKS, STREETS, AND ALLEYS THAT WILL NEED TO BE CUT OR REMOVED WILL BE PATCHED OR REPLACED IN ACCORDANCE WITH MUNICIPALITY'S SPECIFICATIONS.
 4. CONTACT NORTHWIND TECHNICAL SERVICES INC. AT (262)-646-5602 FOR CONSTRUCTION STAKING AND LAYOUT.

CONTINUED ON DWG X OF X

CONTINUED ON DWG X OF X



- EXISTING AERIAL FIBER
- PROPOSED AERIAL FIBER
- EXISTING UNDERGROUND
- PROPOSED UNDERGROUND
- EXISTING AERIAL STRAND
- PROPOSED AERIAL STRAND
- EXISTING ANCHOR
- PROPOSED ANCHOR

THIS DRAWING CONTAINS PROPRIETARY INFORMATION AND IS ONLY TO BE DISCLOSED TO PERSONS WHO HAVE A NEED TO KNOW.

NORTHWIND TECHNICAL SERVICES, INC.
 W507 N1499 GOLF RD.
 DELAFIELD, WI 53018
 (262)646-5602 FAX (262)646-5603
 WWW.NORTHWINDTECH.COM

CONTINUED ON DWG X OF X

TOTAL PROJECT FOOTAGE = 175'	T7N R22E SEC.31	BADGER MUTUAL
TOTAL PROJECT AERIAL = 0'		N. 17TH ST AND W. NATIONAL AVE
TOTAL PROJECT U/G = 175'	ONSITE CONTACT:	CITY OF MILWAUKEE
AERIAL THIS MAP = 0'		FILE NAME: 17THNATIONALBASE.DWG
U/G THIS MAP = 175'	OFFICE:	DWG: 1 of 1 SCALE: 1:30
TOTAL ISP = 0'	CELL:	DATE: 12.17.07 REVISION: 00