



kaas
wilson
architects

The Sanctuary at Milwaukee
Milwaukee, MN



NOT FOR CONSTRUCTION

- EXTERIOR ELEVATION NOTES**
- SEE DRAWING SHEET A841 FOR WINDOW HEAD, JAMB AND SILL DETAILS.
 - SEE SHEETS A810-A813 FOR EXTERIOR WALL DETAILS.
 - ALL DIMENSIONS AT EXTERIOR WALLS ARE TAKEN TO EXTERIOR FACE OF MASONRY AT CMU WALLS OR CENTER OF STUD AT FRAMED WALLS UNLESS NOTED OTHERWISE.
 - SEE SHEETS A800 & A801 FOR INTERIOR AND EXTERIOR WALL TYPES.
 - EXPANSION JOINTS REQUIRED AT MASONRY WALLS EVERY 30'-0" (REGARDLESS IF SHOWN ON ELEVATION OR NOT SHOWN ON ELEVATION), SEE SHEET A810.
 - PROVIDE MASONRY CONTROL JOINTS AT ALL MASONRY INSIDE CORNERS, SEE SHEET A810. PROVIDE MASONRY CONTROL JOINTS AT ANY FIELD NO FURTHER THAN 30' APART.
 - ALL WINDOWS IN MASONRY TO HAVE BRICK SOLDIER COURSE HEADERS & STONE SILLS.
 - ALL WINDOWS IN SIDING TO HAVE 6" TRIM SURROUNDS
 - FOR VERTICAL JOINTS OF DIS-SIMILAR MATERIALS VERIFY WITH ARCHITECT.
 - COMPLY WITH FLASHING DETAILS ON SHEETS A814 FOR ROOF DETAILS.
 - ALL HORIZONTAL TRIM BANDS THAT OCCUR ON THE FACE OF A BAY RETURN BACK TO THE MAIN BODY OF THE BUILDING.
 - ANY CULTURED STONE LOCATED ABOVE A LAP OR SLOPING ROOF SURFACE SHALL BE HELD ABOVE THE ROOF SURFACE PER THE MANUFACTURER'S REQUIREMENTS. PROVIDE PREFINISHED METAL FLASHING BELOW CULTURED STONE - COLOR TO BE SELECTED BY ARCHITECT.
 - ALL OUTSIDE CORNERS AT LAP SIDING SHALL RECEIVE VERTICAL CORNER BOARDS, BOTH SIDES OF CORNER. SEE A811.
 - STONE SILL TO OCCUR AT ALL CMU TO CFB/MASONRY TRANSITIONS.
 - JOINTS OF ALL STONE SILLS SHALL BE RAKED AND FILLED W/ COLOR MATCHED SEALANT.
 - WHERE CMU FOUNDATION (OR VENEER) IS EXPOSED ABOVE GRADE, IT SHALL BE COLORED ARCHITECTURAL CMU. COLOR TO BE SELECTED BY ARCHITECT.
 - PTAC/MECHANICAL LOUVERS TO BE PAINTED TO MATCH ADJACENT SIDING OR BRICK. COLORS TO BE SELECTED BY ARCHITECT.
 - DRYER/BATH/KITCHEN EXHAUST HOODS WILL VARY BY COLOR OF FIELD THEY OCCUR IN. COLORS TO BE SELECTED BY ARCHITECT.

- EXTERIOR MATERIAL KEY TAG:**
- 4.1 AMCON BLOCK - CMU BLOCK - COLOR: FUDGE
 - 4.2 BOULDER CREEK STONE - WEATHERED EDGE CASTANO
 - 4.3 STONE SILL - COLOR: TBD
 - 4.4 SOUX CITY UTILITY BRICK - COLOR: OXFORD GRAY FINISH: VELOUR
 - 4.5 SOUX CITY UTILITY BRICK - COLOR: DUNES GRAY FINISH: VELOUR
 - 5.1 BALCONY - ALUMINUM RAIL - COLOR: TBD
 - 5.2 PREFINISHED ALUMINUM SOFFIT AND FASCIA - COLOR: TBD
 - 6.1 ARCHITECTURAL GRADE SHINGLES - COLOR: TBD
 - 7.1 CFB TRIM - COLOR: TBD
 - 7.2 CFB PANEL 1 - COLOR: BENJAMIN MOORE AC-31 Hot Spring Stones
 - 7.3 CFB 5" LAP SIDING - COLOR 1: BENJAMIN MOORE AC-33 Mesa Verde Tan
 - 7.4 CFB 5" LAP SIDING - COLOR 2: BENJAMIN MOORE AC-31 Hot Spring Stone
 - 7.5 CFB SHAKES - COLOR 1: BENJAMIN MOORE AC-33 Mesa Verde Tan
 - 7.6 CFB SHAKES - COLOR 2: BENJAMIN MOORE AC-31 Hot Spring Stone
 - 9.0 VINYL WINDOW - COLOR: TBD
 - 9.1 MECHANICAL LOUVER - COLOR: TBD
 - 9.2 ARCHITECTURAL LOUVER - COLOR: TBD



1 Exterior Elevation - Phase I - East
3/32" = 1'-0"

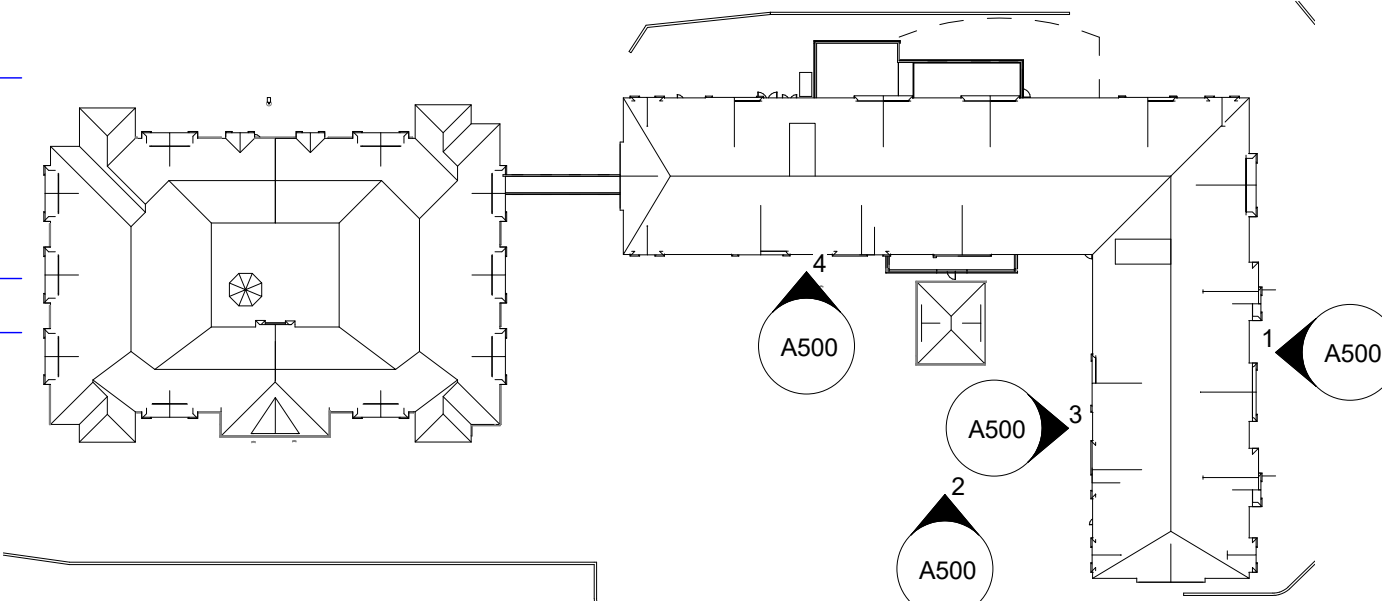


2 Exterior Elevation - Phase I - South 1
3/32" = 1'-0"

3 Exterior Elevation - Phase I - West 1
3/32" = 1'-0"



4 Exterior Elevation - Phase I - South 2
3/32" = 1'-0"



C:\Revit\Locall1565-SCA-Milwaukee-The Sanctuary at Milwaukee_v4_res.dgn.rvt

6/14/2016 4:46:02 PM
Copyright Kaas Wilson Architects

NOT FOR CONSTRUCTION

Date	
Revision	
Rev. No.	

- EXTERIOR ELEVATION NOTES**
- SEE DRAWING SHEET A841 FOR WINDOW HEAD, JAMB AND SILL DETAILS.
 - SEE SHEETS A810-A813 FOR EXTERIOR WALL DETAILS.
 - ALL DIMENSIONS AT EXTERIOR WALLS ARE TAKEN TO EXTERIOR FACE OF MASONRY AT CMU WALLS OR CENTER OF STUD AT FRAMED WALLS UNLESS NOTED OTHERWISE.
 - SEE SHEETS A800 & A801 FOR INTERIOR AND EXTERIOR WALL TYPES.
 - EXPANSION JOINTS REQUIRED AT MASONRY WALLS EVERY 30'-0" (REGARDLESS IF SHOWN ON ELEVATION OR NOT SHOWN ON ELEVATION), SEE SHEET A810.
 - PROVIDE MASONRY CONTROL JOINTS AT ALL MASONRY INSIDE CORNERS, SEE SHEET A810. PROVIDE MASONRY CONTROL JOINTS AT ANY FIELD NO FURTHER THAN 30' APART.
 - ALL WINDOWS IN MASONRY TO HAVE BRICK SOLDIER COURSE HEADERS & STONE SILLS.
 - ALL WINDOWS IN SIDING TO HAVE 6" TRIM SURROUNDS
 - FOR VERTICAL JOINTS OF DIS-SIMILAR MATERIALS VERIFY WITH ARCHITECT.
 - COMPLY WITH FLASHING DETAILS ON SHEETS A814 FOR ROOF DETAILS.
 - ALL HORIZONTAL TRIM BANDS THAT OCCUR ON THE FACE OF A BAY RETURN BACK TO THE MAIN BODY OF THE BUILDING.
 - ANY CULTURED STONE LOCATED ABOVE A FLAT OR SLOPING ROOF SURFACE SHALL BE HELD ABOVE THE ROOF SURFACE PER THE MANUFACTURER'S REQUIREMENTS. PROVIDE PREFINISHED METAL FLASHING BELOW CULTURED STONE - COLOR TO BE SELECTED BY ARCHITECT.
 - ALL OUTSIDE CORNERS AT LAP SIDING SHALL RECEIVE VERTICAL CORNER BOARDS, BOTH SIDES OF CORNER. SEE A811.
 - STONE SILL TO OCCUR AT ALL CMU TO CFB/MASONRY TRANSITIONS.
 - JOINTS OF ALL STONE SILLS SHALL BE RAKED AND FILLED W/ COLOR MATCHED SEALANT.
 - WHERE CMU FOUNDATION (OR VENEER) IS EXPOSED ABOVE GRADE, IT SHALL BE COLORED ARCHITECTURAL CMU. COLOR TO BE SELECTED BY ARCHITECT.
 - PTAC/MECHANICAL LOUVERS TO BE PAINTED TO MATCH ADJACENT SIDING OR BRICK. COLORS TO BE SELECTED BY ARCHITECT.
 - DRYER/BATH/KITCHEN EXHAUST HOODS WILL VARY BY COLOR OF FIELD THEY OCCUR IN. COLORS TO BE SELECTED BY ARCHITECT.

- EXTERIOR MATERIAL KEY TAG:**
- (4.1) AMCON BLOCK - CMU BLOCK - COLOR: FUDGE
 - (4.2) BOULDER CREEK STONE - WEATHERED EDGE CASTANO
 - (4.3) STONE SILL - COLOR: TBD
 - (4.4) SOUX CITY UTILITY BRICK - COLOR: OXFORD GRAY FINISH: VELOUR
 - (4.5) SOUX CITY UTILITY BRICK - COLOR: DUNES GRAY FINISH: VELOUR
 - (5.1) BALCONY - ALUMINUM RAIL - COLOR: TBD
 - (5.2) PREFINISHED ALUMINUM SOFFIT AND FASCIA - COLOR: TBD
 - (6.1) ARCHITECTURAL GRADE SHINGLES - COLOR: TBD
 - (7.1) CFB TRIM - COLOR: TBD
 - (7.2) CFB PANEL 1 - COLOR: BENJAMIN MOORE AC-31 Hot Spring Stones
 - (7.3) CFB 5" LAP SIDING - COLOR 1: BENJAMIN MOORE AC-33 Mesa Verde Tan
 - (7.4) CFB 5" LAP SIDING - COLOR 2: BENJAMIN MOORE AC-31 Hot Spring Stone
 - (7.5) CFB SHAKES - COLOR 1: BENJAMIN MOORE AC-33 Mesa Verde Tan
 - (7.6) CFB SHAKES - COLOR 2: BENJAMIN MOORE AC-31 Hot Spring Stone
 - (9.0) VINYL WINDOW - COLOR: TBD
 - (9.1) MECHANICAL LOUVER - COLOR: TBD
 - (9.2) ARCHITECTURAL LOUVER - COLOR: TBD



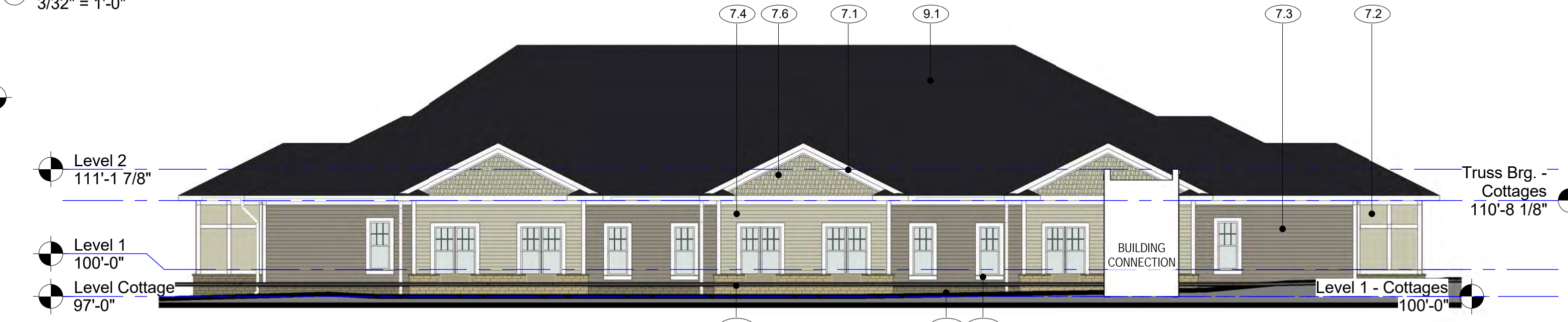
2 Exterior Elevation - Phase I - North
 3/32" = 1'-0"



1 Exterior Elevation - Phase I - West 2
 3/32" = 1'-0"



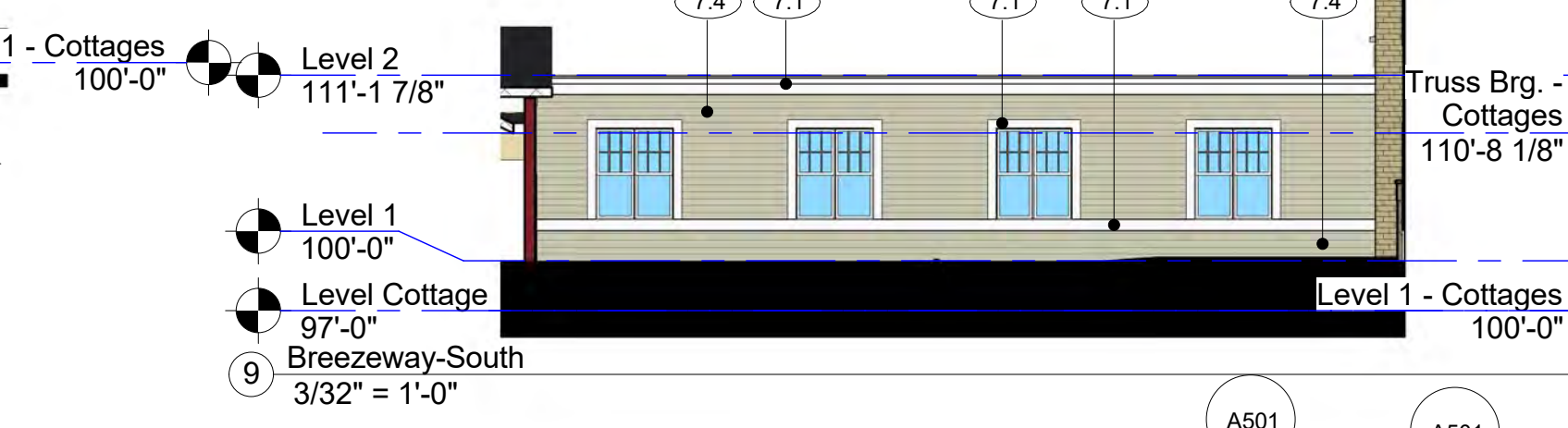
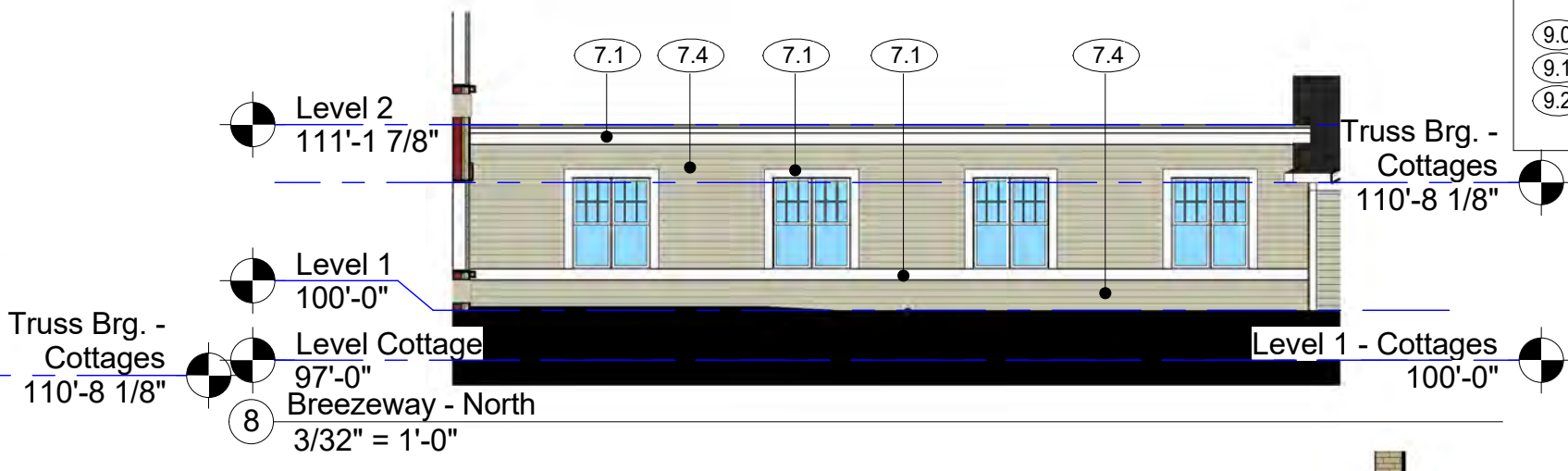
3 Exterior Elevation - Phase II - West
 3/32" = 1'-0"



4 Exterior Elevation - Phase II - East
 3/32" = 1'-0"



6 Exterior Elevation - Phase II - North
 3/32" = 1'-0"

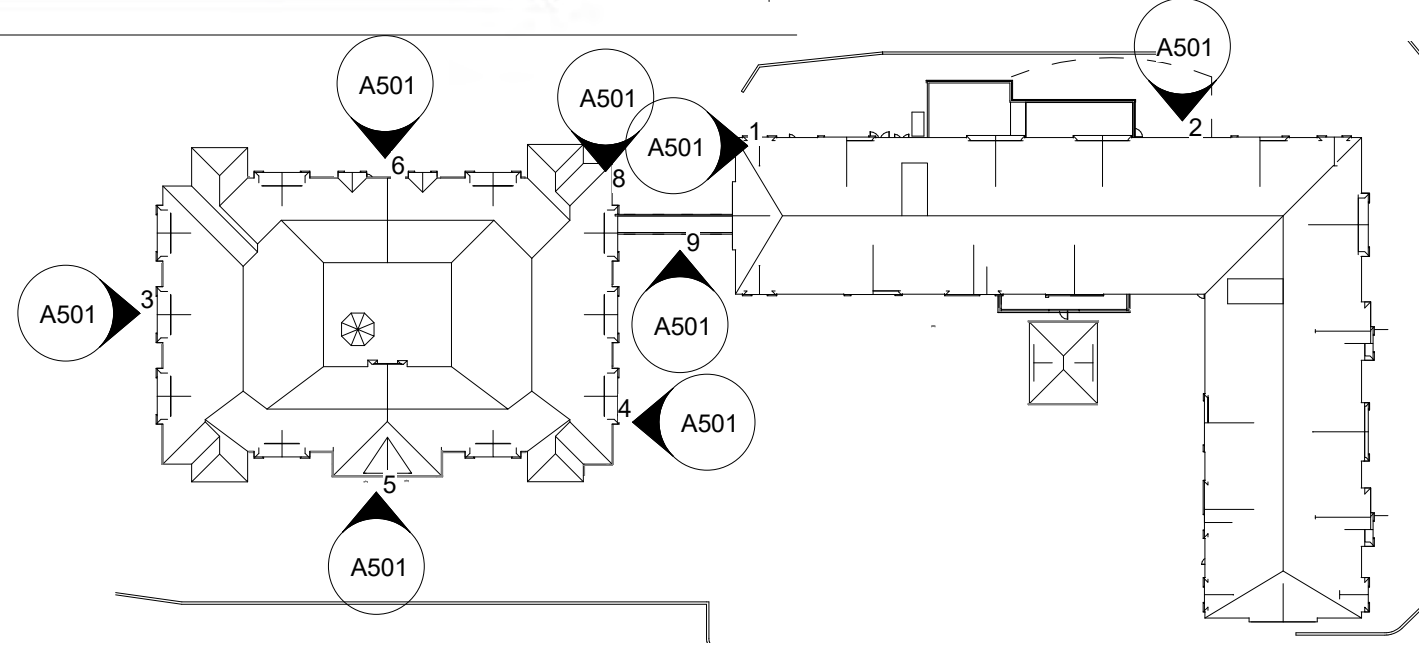


8 Breezeway - North
 3/32" = 1'-0"

9 Breezeway - South
 3/32" = 1'-0"



5 Exterior Elevation - Phase II - South
 3/32" = 1'-0"



C:\Revit\Locait1565-SCA-Milwaukee-The Sanctuary at Milwaukee_v4_res.dgn.rvt
 6/14/2016 4:46:29 PM
 Copyright Kaas Wilson Architects

SIOUX CITY BRICK:
Dunes Gray
Velour



SIOUX CITY BRICK:
Oxfor Gray
Velour



ARCH PRECAST STONE:
Amcon Block
Fudge



FIBER CEMENT SIDING:
HARDIE-SHINGLE
Benjamin Moore
AC-33: Mesa Verde Tan



FIBER CEMENT SIDING:
Benjamin Moore
AC-31: Hot Spring Stone



FIBER CEMENT SIDING:
HARDIE-SHINGLE
Benjamin Moore
AC-31: Hot Spring Stone



FIBER CEMENT SIDING:
Benjamin Moore
AC-33: Mesa Verde Tan



FIBER CEMENT SIDING:
Benjamin Moore
AC-31: Hot Spring Stone



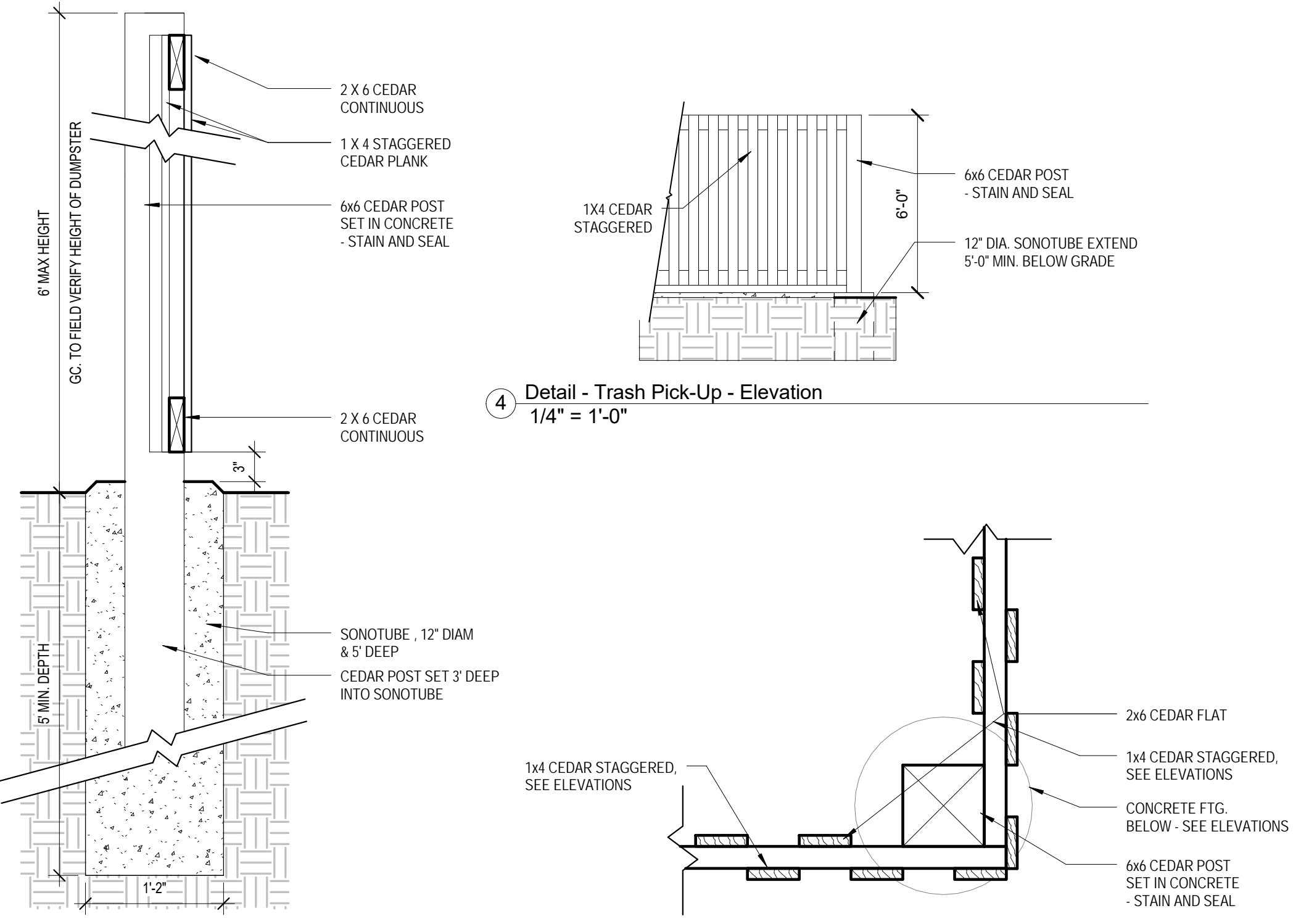
Project Number	1565
Date	3.11.2016
Drawn By	Author
Checked By	Checker

NOT FOR CONSTRUCTION

Date	
Revision	

Rev. No.	2	Architectural Site Plan
	A120	As indicated
		A120

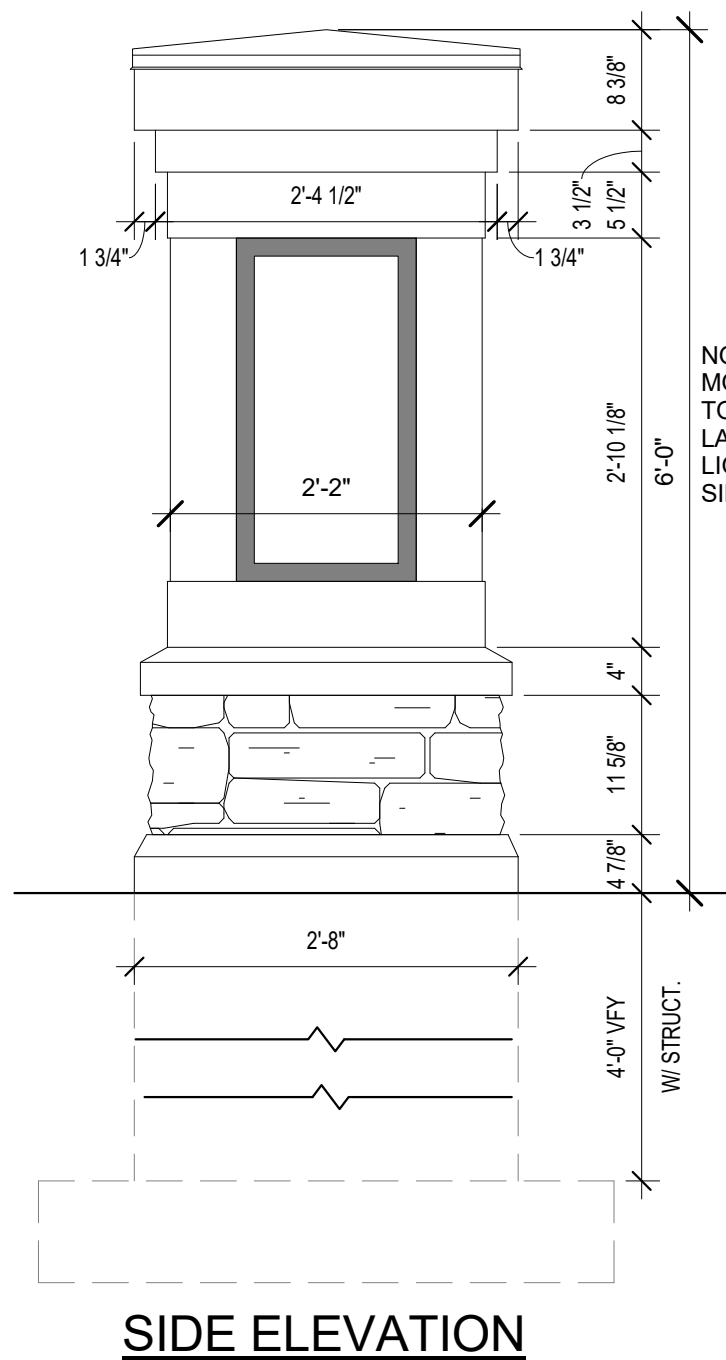
NOTE: the sign plans are preliminary - as to the text and color - but as to size, height, etc. - these are set dimensions



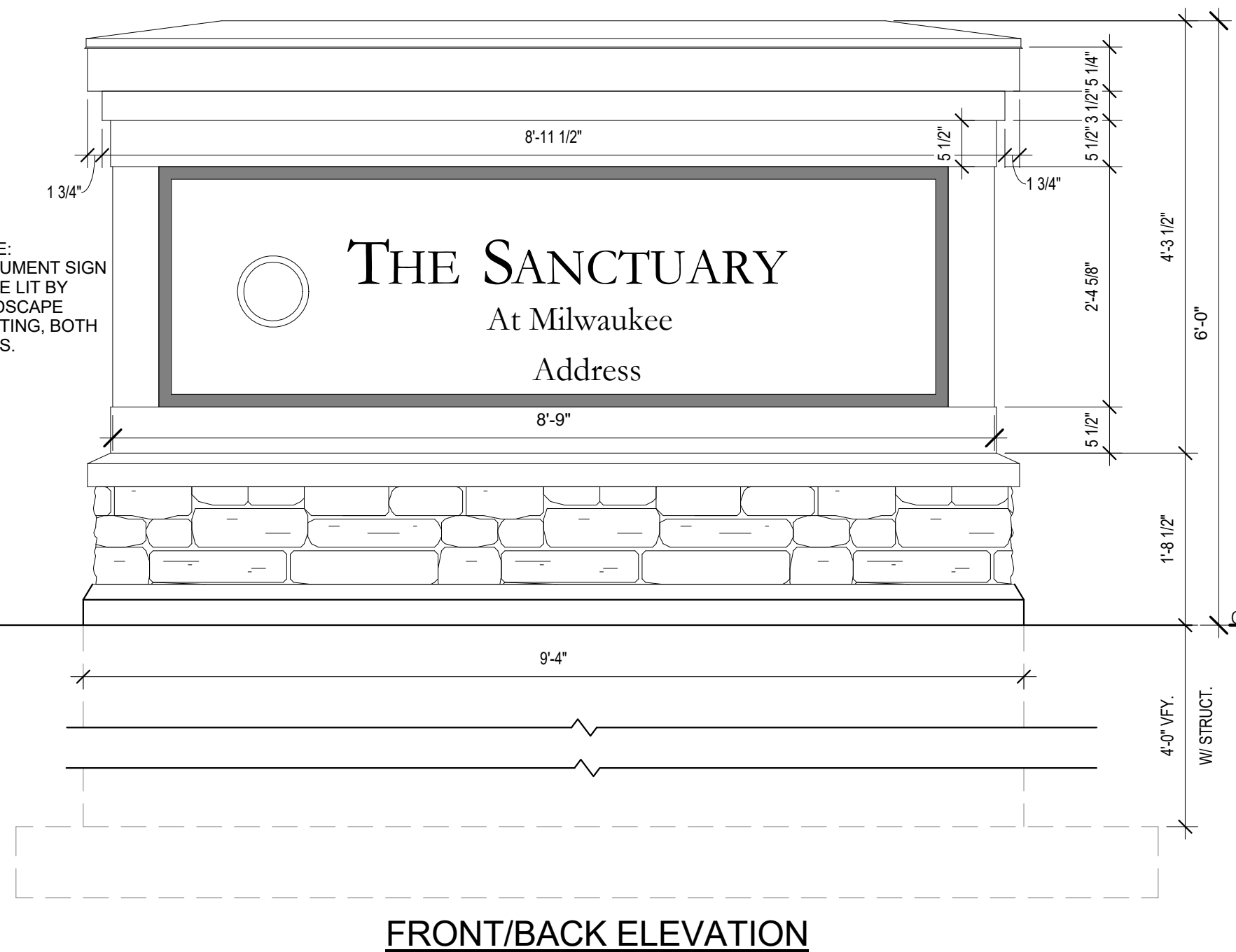
3 Detail - Trash Pick-Up - Post and Pavement
1" = 1'-0"

4 Detail - Trash Pick-Up - Elevation
1/4" = 1'-0"

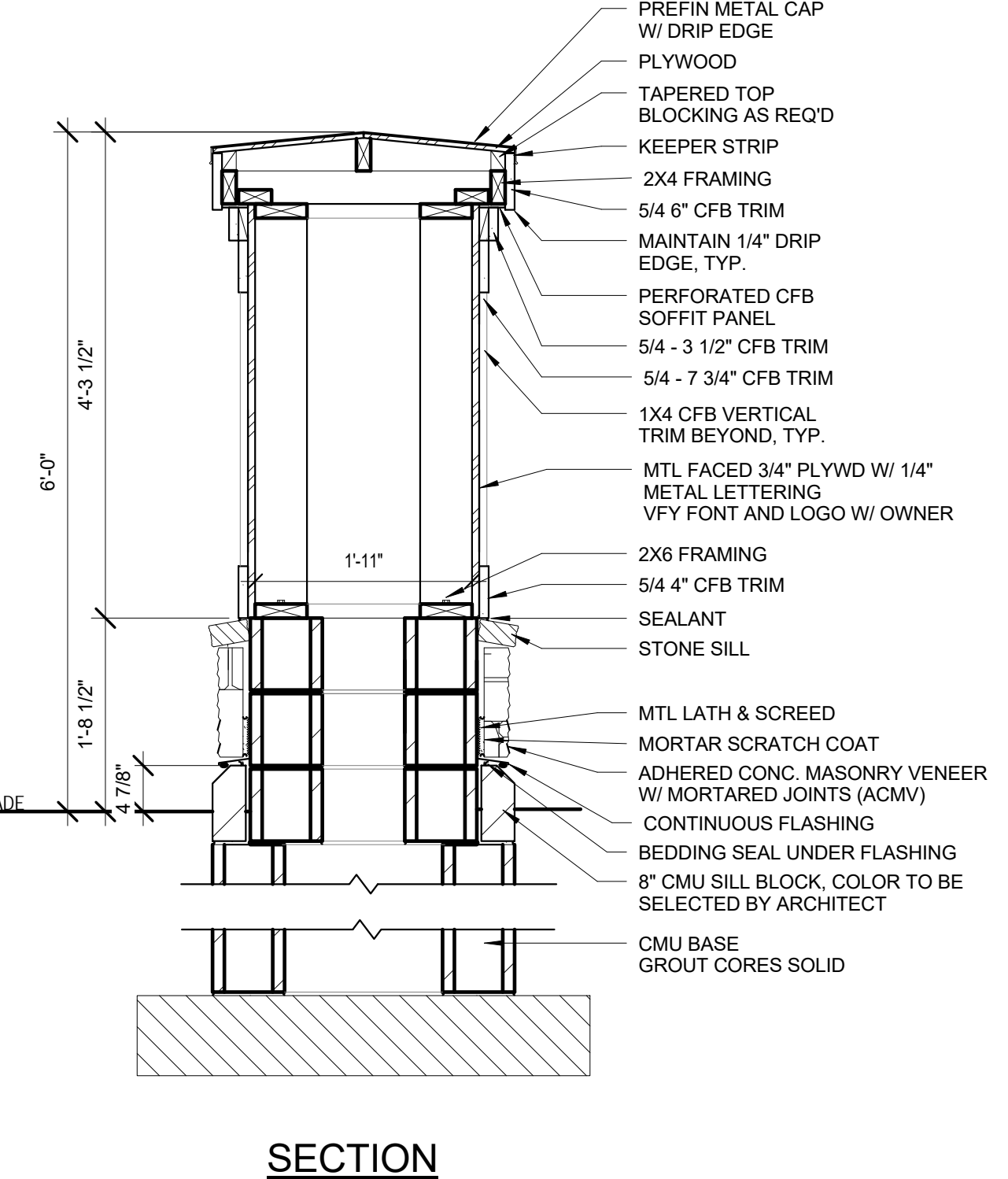
5 Detail - Trash Pick-Up - Corner
1 1/2" = 1'-0"



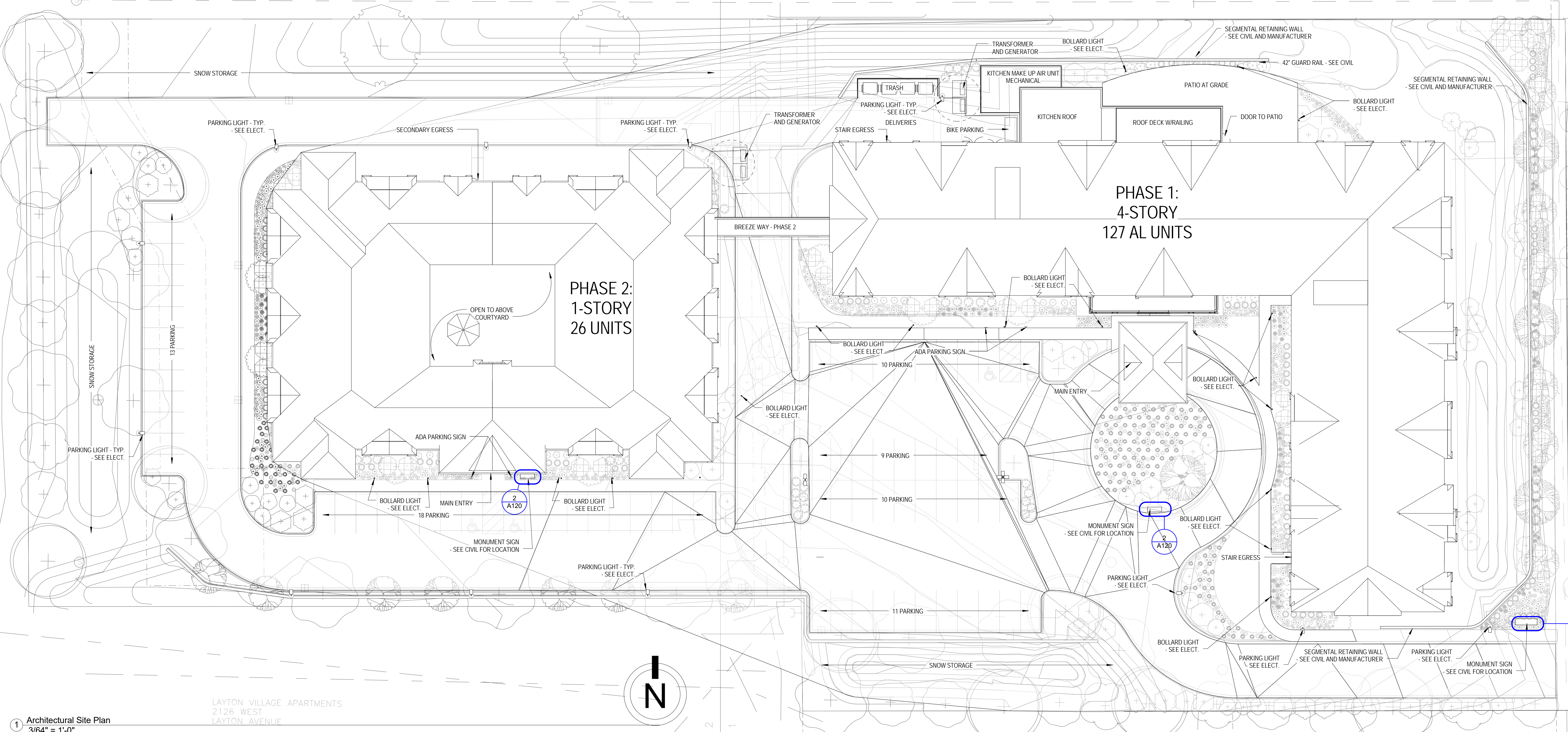
2 Monument Signage
3/4" = 1'-0"



FRONT/BACK ELEVATION

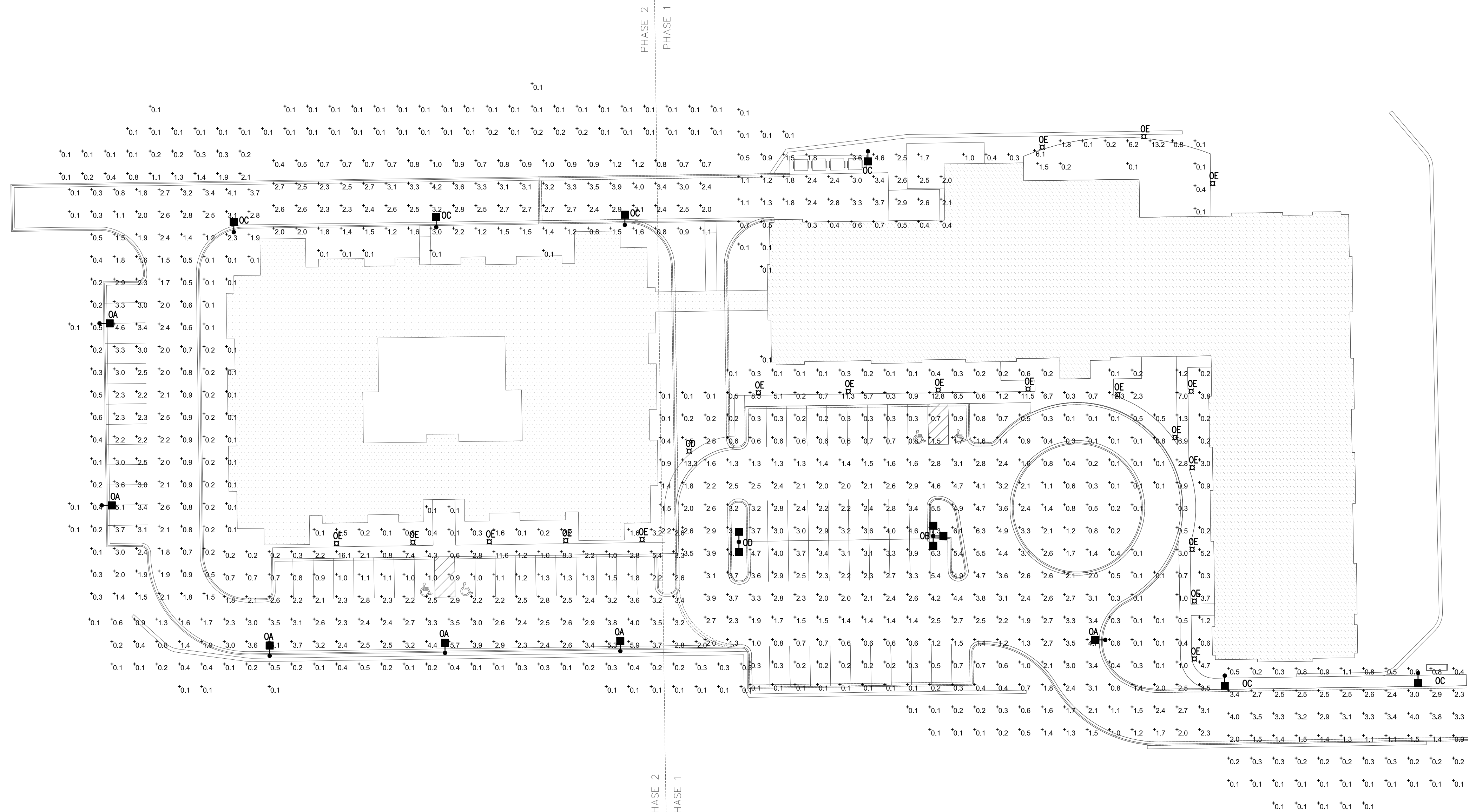


SECTION



1 Architectural Site Plan
3/64" = 1'-0"

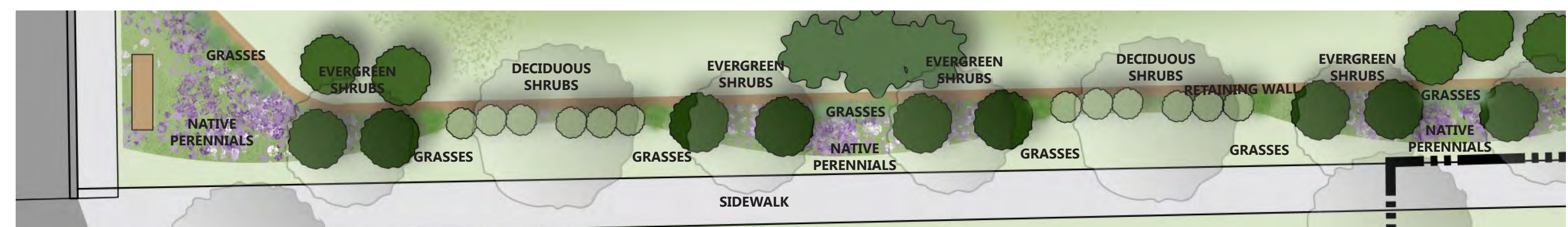
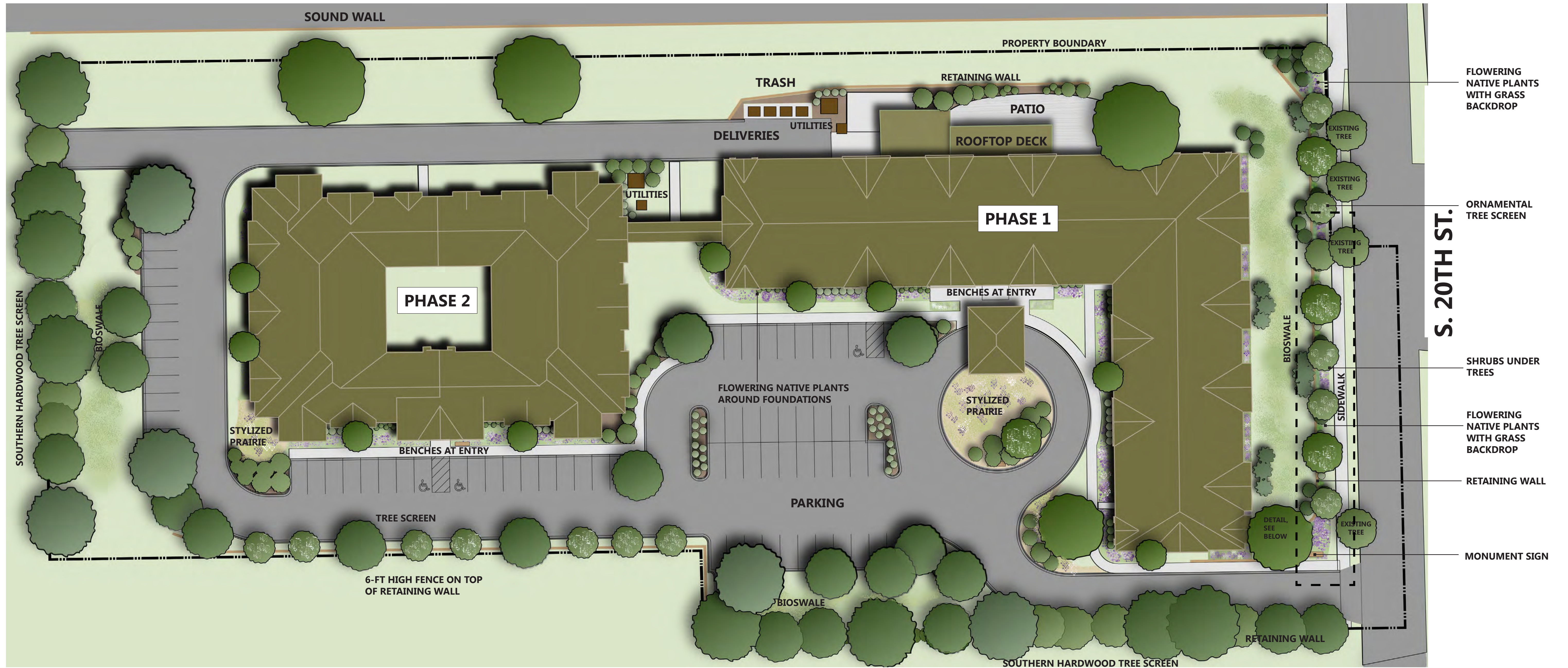
Copyright Kaas Wilson Architects 6/14/2016 4:45:07 PM C:\Revit\Local1565-SCA-Milwaukee-The Sanctuary at Milwaukee_v4_res.dgn.rvt



1 Electrical Site Plan - Photometrics
 1" = 30'-0"

Statistics						
Description	Symbol	Avg	Max	Min	Max/Min	Avg/Min
North property line	+	0.2 fc	2.1 fc	0.1 fc	21.0:1	2.0:1
North Road-Phase 2	+	1.9 fc	4.2 fc	0.1 fc	42.0:1	19.0:1
North Side - Phase 1	+	1.5 fc	4.6 fc	0.1 fc	46.0:1	15.0:1
South Parking-Phase 1	+	1.9 fc	13.3 fc	0.1 fc	133.0:1	19.0:1
South Parking-Phase 2	+	1.9 fc	16.1 fc	0.1 fc	161.0:1	19.0:1
South Roadway-Phase 1	+	1.3 fc	4.0 fc	0.1 fc	40.0:1	13.0:1
West Parking-phase 2	+	1.4 fc	5.1 fc	0.1 fc	51.0:1	14.0:1

NOT FOR CONSTRUCTION



DETAIL OF STREET FRONTAGE - NTS (ORNAMENTAL TREES FADED BACK FOR CLARITY)

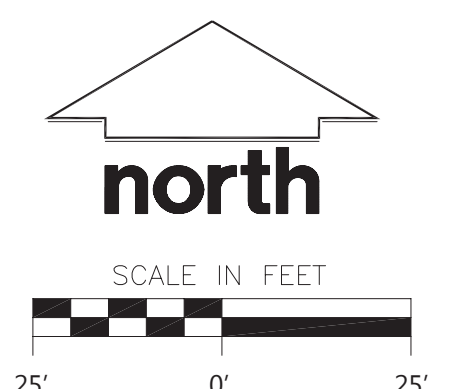
THE SANCTUARY AT MILWAUKEE

LANDSCAPE PLAN - PHASES 1 AND 2

MAY 4TH, 2016

JSD Professional Services, Inc.
• Engineers • Surveyors • Planners

KW kaas wilson architects



- Education**
 - Ronald Reagan High School
 - Cooper Elementary School
 - Greenfield Middle School
- Health Care**
 - Aurora Advanced Health Care
 - Wheaton Franciscan Medical Group
 - Metro Physicians
 - Med Pointe Family Care Center
- Retail & Services**
 - Target
 - Kohls
 - Walgreens
 - CVS Pharmacy
 - Carquest
 - Ashley Furniture HomeStore
 - Big City Pizza
 - Mario's Italian Grill
- Civic and Community**
 - US Post Office
 - US Bank
 - Garanty Bank
 - Adoration Evangelical Lutheran Church
 - St. Roman Parish
 - Islamic Society of Milwaukee
 - Masjid Al-Huda
- Parks**
 - Wilson Park
 - Arlington Cemetary
 - Morgandale Park
 - Cooper Park
 - Haker Park
 - Zablocki Park
 - Whittier Park
 - Mitchell Airport Park

