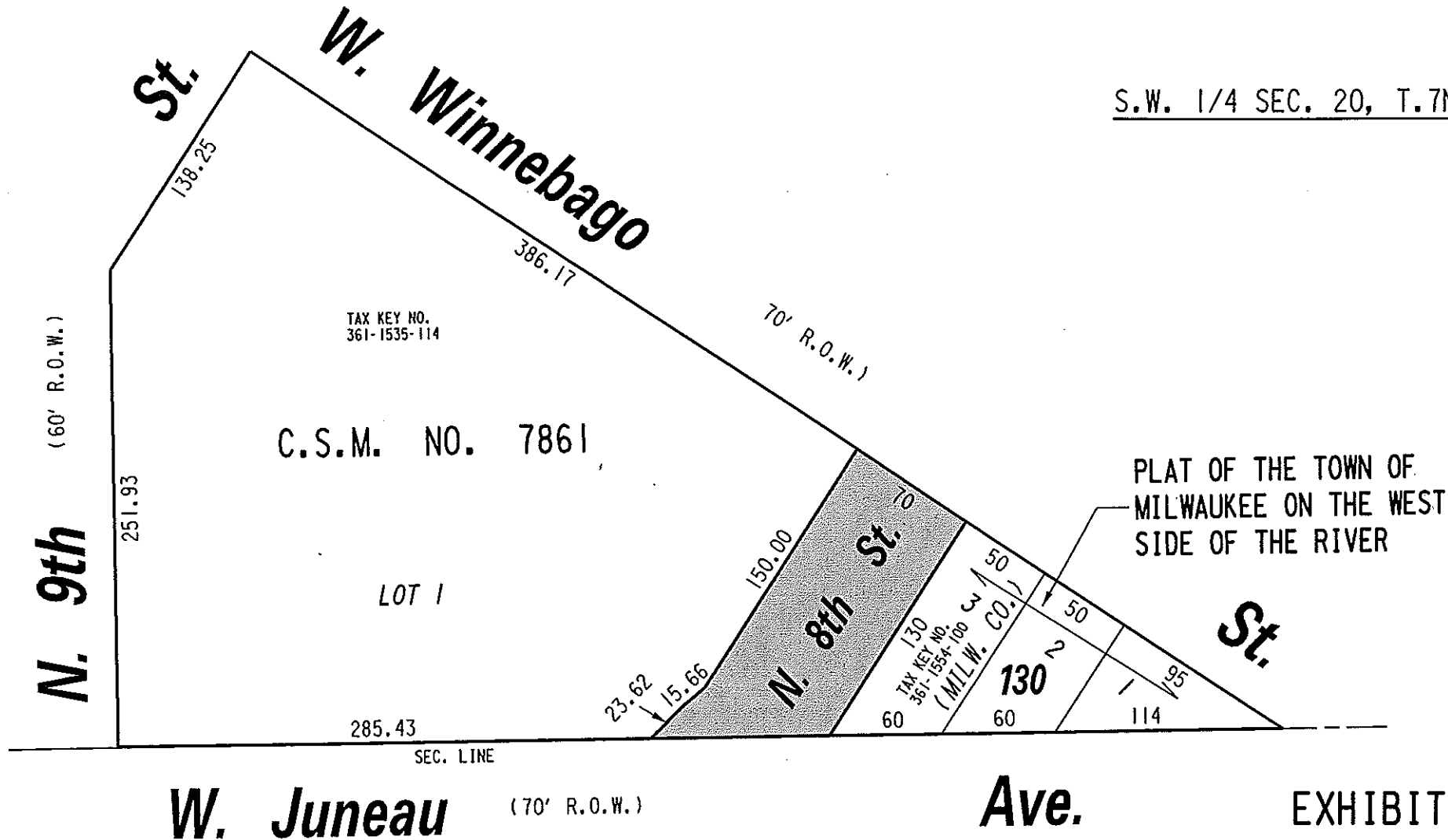


362

S.W. 1/4 SEC. 20, T.7N., R.22E.



PLAT OF THE TOWN OF MILWAUKEE ON THE WEST SIDE OF THE RIVER

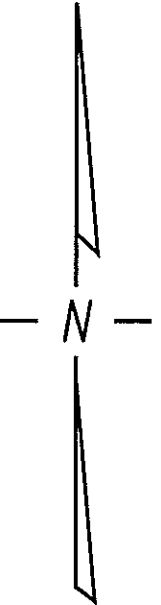


EXHIBIT "A"  
 FILE NO. 061395  
 INFRASTRUCTURE SERVICES DIVISION  
 MILWAUKEE, WISCONSIN

ASSIGNED TO: W.E. FUCHS  
 DRAWN BY: W.E.F.  
 PROJECT/GRANT NO.: WK52337242  
 APPROVED BY:

CH'K'D. BY: W.E. FUCHS  
 DATE: MARCH 22, 2007  
 SCALE: 1" = 80'

*Maria Lindholm*  
 CENTRAL DRAFTING & RECORDS MANAGER

*Jeffrey Palenche*  
 CITY ENGINEER

 PUBLIC STREET PROPOSED TO BE VACATED