

398

S.W. 1/4 SEC. 29, T.7N., R.22E.

W. Wisconsin

(R.O.W. VARIES)

1/4 SEC. LINE

Ave.

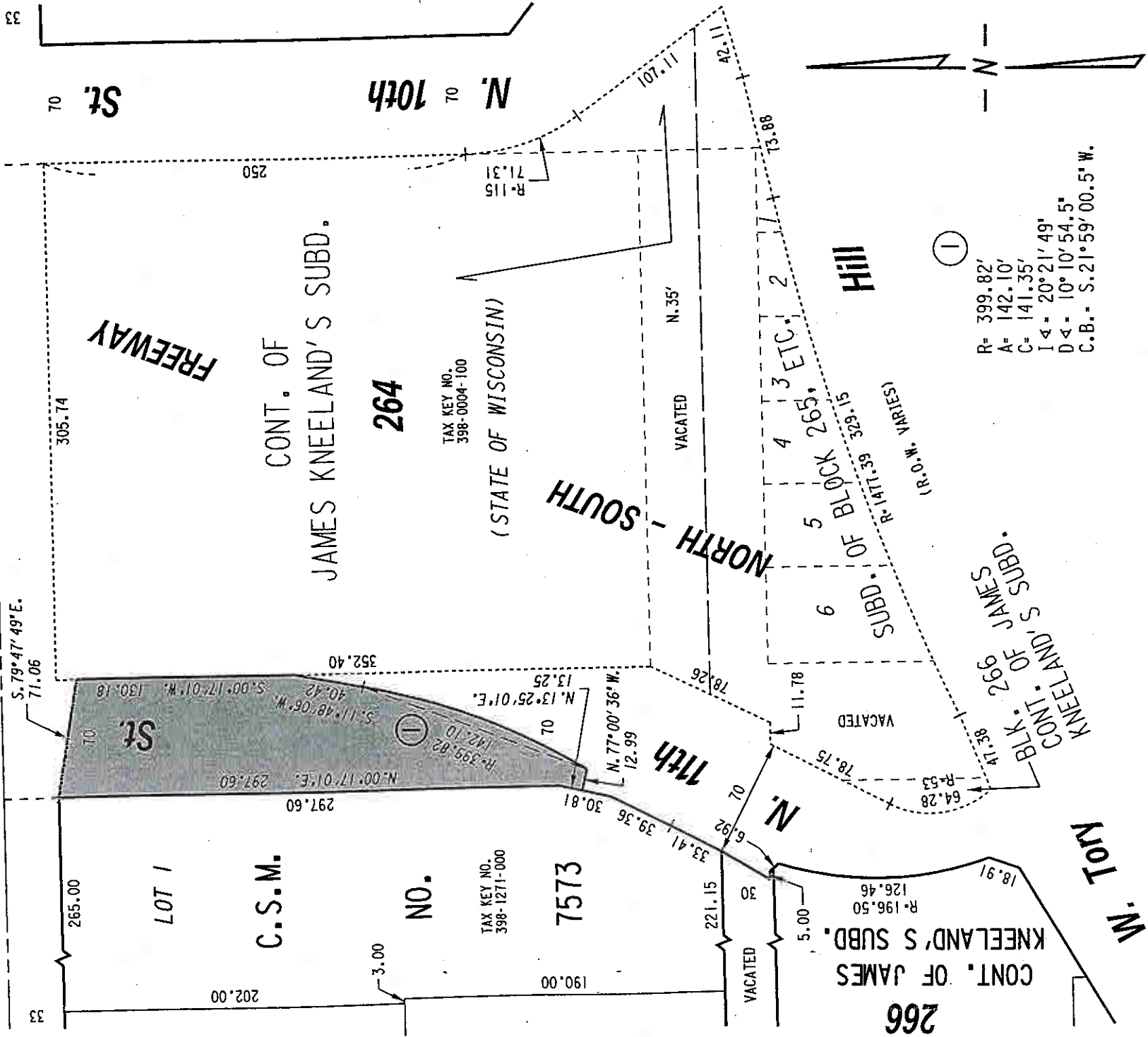


EXHIBIT "A"
 FILE NO. 070067
 INFRASTRUCTURE SERVICES DIVISION
 MILWAUKEE, WISCONSIN

ASSIGNED TO: W.E. FUCHS
 CH'K'D. BY: W.E. FUCHS
 DRAWN BY: W.E.F.
 DATE: JULY 14, 2008
 PROJECT/GRANT NO.: WK52337245
 SCALE: 1" = 80'
 APPROVED BY:

Marcia Lindner
 CENTRAL DRAFTING & RECORDS MANAGER
 ENGINEER

PORTION OF PUBLIC STREET PROPOSED TO BE VACATED