

St. James Episcopal Church

PROJECT

Milwaukee Wisconsin

SEAL

**St. James Episcopal
Church**

833 W. Wisconsin Avenue

J. Jeffers & Co.
225 E. Michigan St.
Suite 110
Milwaukee, WI 53202

PROJECT NUMBER 172783

DRAWINGS CONSULTANTS

ENGBERG ANDERSON

320 EAST BUFFALO STREET
SUITE 500
MILWAUKEE, WISCONSIN 53202
PH 414-944-9000
FX 414-944-9100

D100	DEMOLITION PLAN
A000	SITE PLAN
A100	BASEMENT FLOOR PLAN
A110	FIRST FLOOR PLAN
A120	SECOND FLOOR PLAN
A130	THIRD -SEVENTH FLOOR PLAN
A180	ROOF PLAN
A400	ELEVATIONS
A401	ELEVATIONS
A450	BUILDING SECTIONS

ISSUED FOR: HPC 02-05-2018

REVISION FOR: NO. DESCRIPTION DATE

SITE LOCATION MAP



DRAWN BY TL

CHECKED BY JMR

TITLE SHEET

G100

**St. James Episcopal
Church**

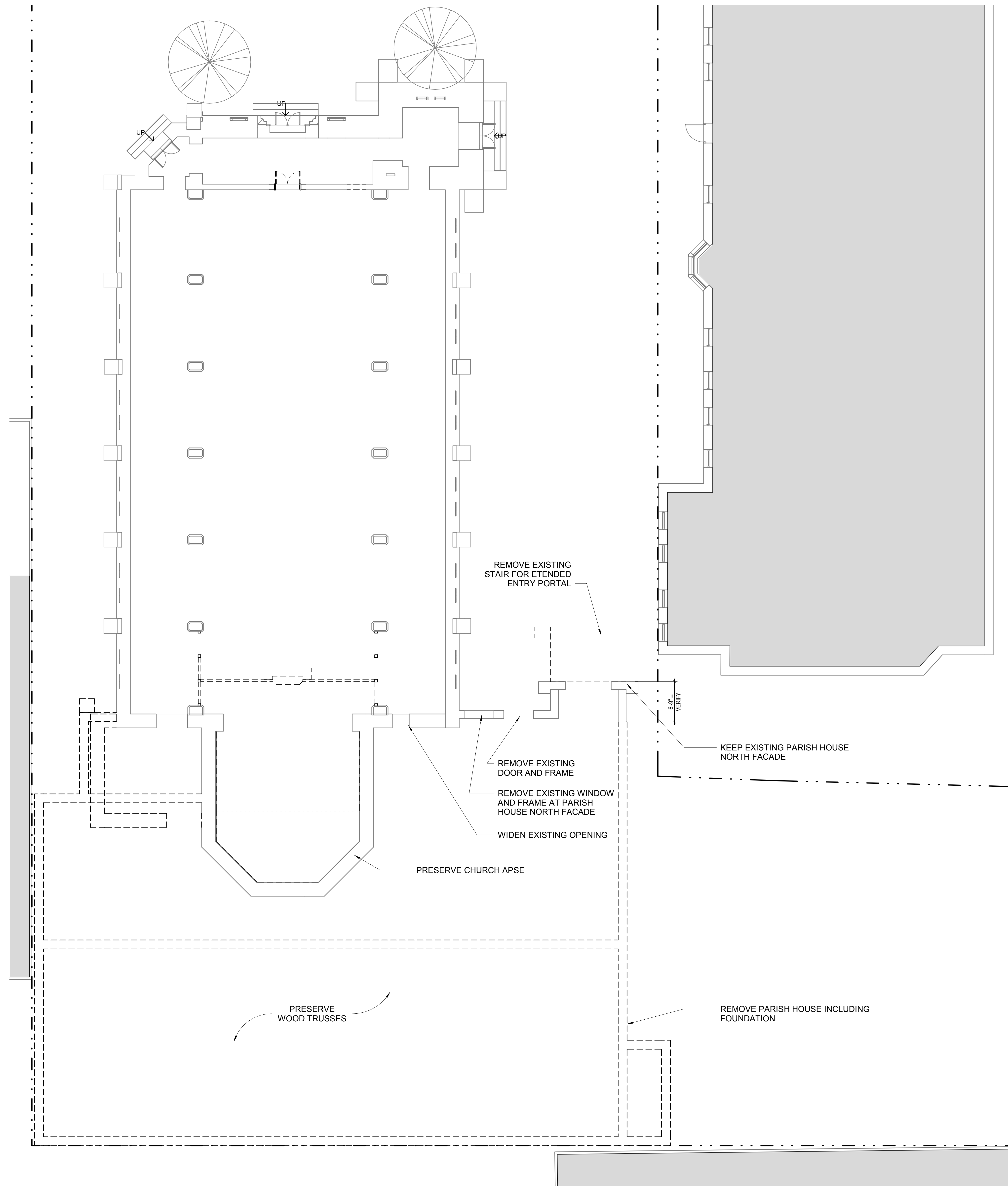
833 W. Wisconsin Avenue

J. Jeffers & Co.
225 E. Michigan St.
Suite 110
Milwaukee, WI 53202

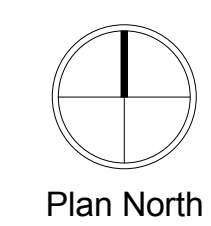
PROJECT NUMBER 172783

ISSUED FOR: HPC 02-05-2018

REVISION FOR: NO. DESCRIPTION DATE



1 DEMOLITION PLAN
SCALE: 1/8" = 1'-0"



D100

DRAWN BY TL
CHECKED BY MRE

DEMOLITION PLAN

**St. James Episcopal
Church**

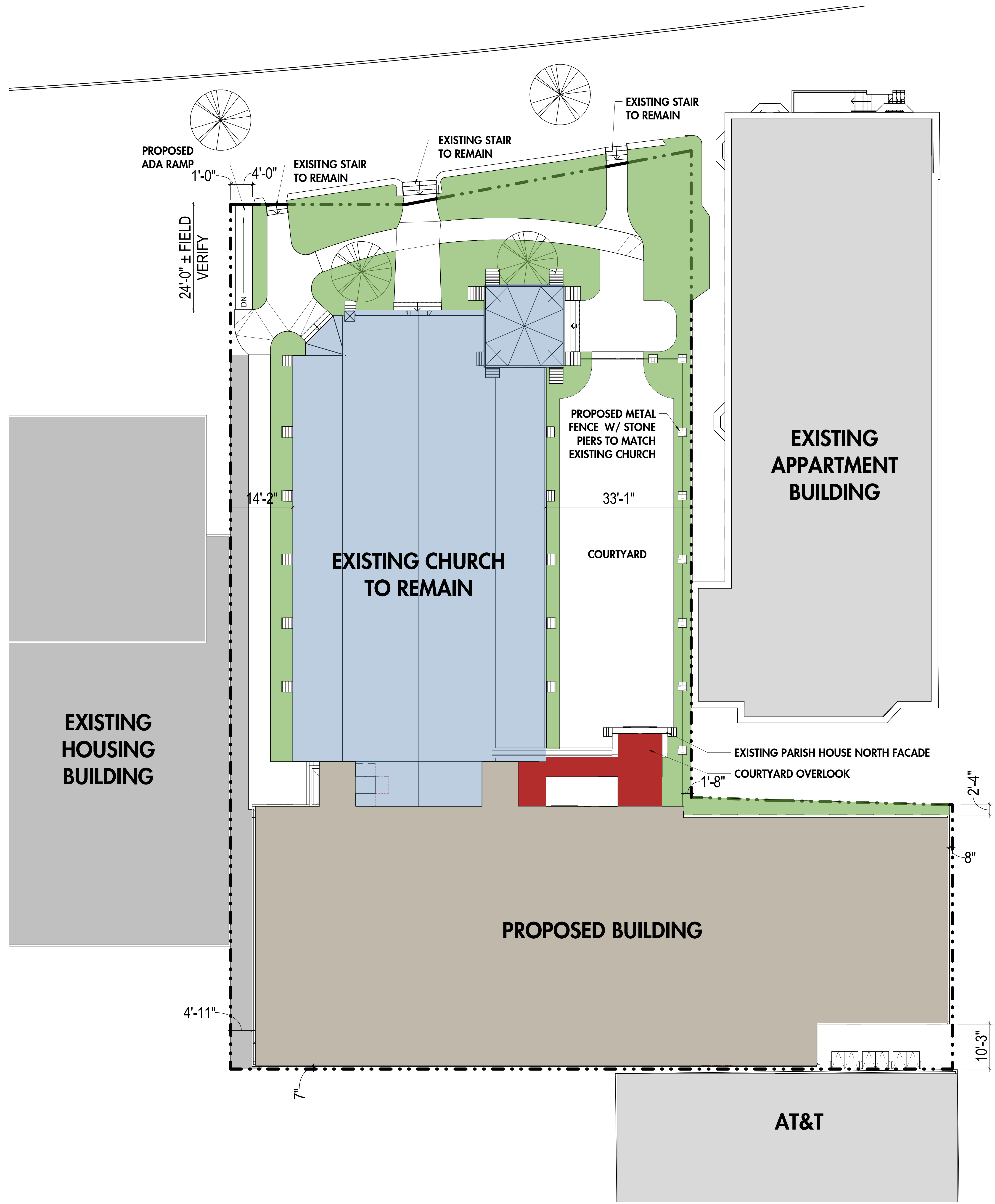
833 W. Wisconsin Avenue

J. Jeffers & Co.
225 E. Michigan St.
Suite 110
Milwaukee, WI 53202

PROJECT NUMBER 172783

ISSUED FOR: HPC 02-05-2018

REVISION FOR: NO. DESCRIPTION DATE

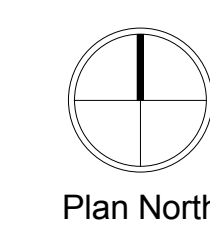


Area Gross Building		
Level	LEVEL	S.F.
Basement	BASEMENT	8666 SF
LEVEL 1	FIRST FLOOR NEW BUILDING	8729 SF
LEVEL 1	FIRST FLOOR CHURCH	6739 SF
LEVEL 2	SECOND FLOOR	9979 SF
LEVEL 2	REMNANT PATIO	681 SF
LEVEL 3	THIRD FLOOR	8144 SF
LEVEL 4	FOURTH FLOOR	8144 SF
LEVEL 6	SIXTH FLOOR	8144 SF
LEVEL 7	SEVENTH FLOOR	8076 SF
Grand total		63335 SF

DRAWN BY JMR

CHECKED BY MRE

SITE PLAN



**St. James Episcopal
Church**

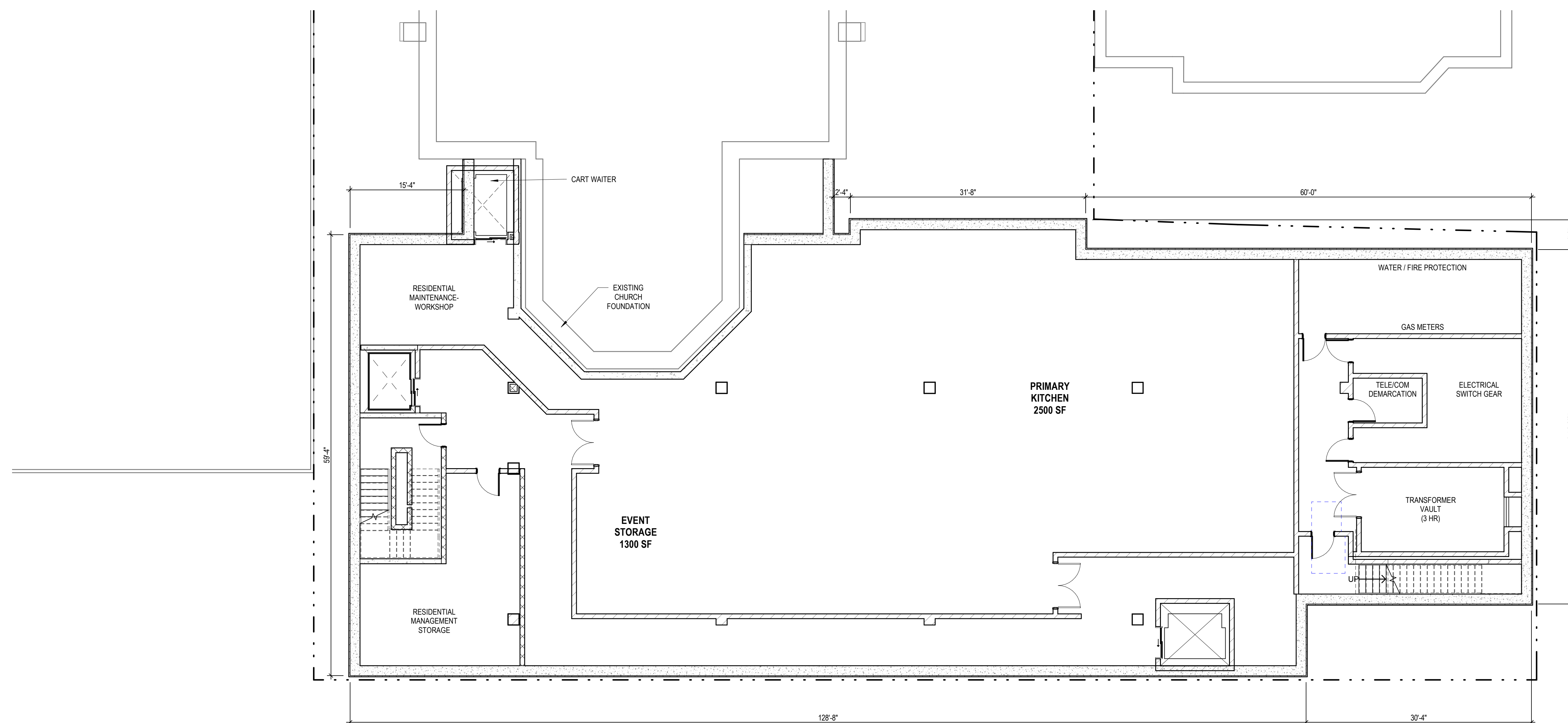
833 W. Wisconsin Avenue

J. Jeffers & Co.
225 E. Michigan St.
Suite 110
Milwaukee, WI 53202

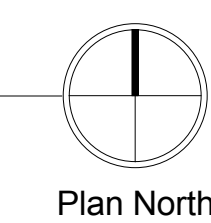
PROJECT NUMBER 172783

ISSUED FOR: HPC 02-05-2018

REVISION FOR: NO. DESCRIPTION DATE



1 BASEMENT PLAN PV
SCALE: 1/8" = 1'-0"



DRAWN BY MT
CHECKED BY MRE

**BASEMENT FLOOR
PLAN**

A100

**St. James Episcopal
Church**

833 W. Wisconsin Avenue

J. Jeffers & Co.
225 E. Michigan St.
Suite 110
Milwaukee, WI 53202

PROJECT NUMBER 172783

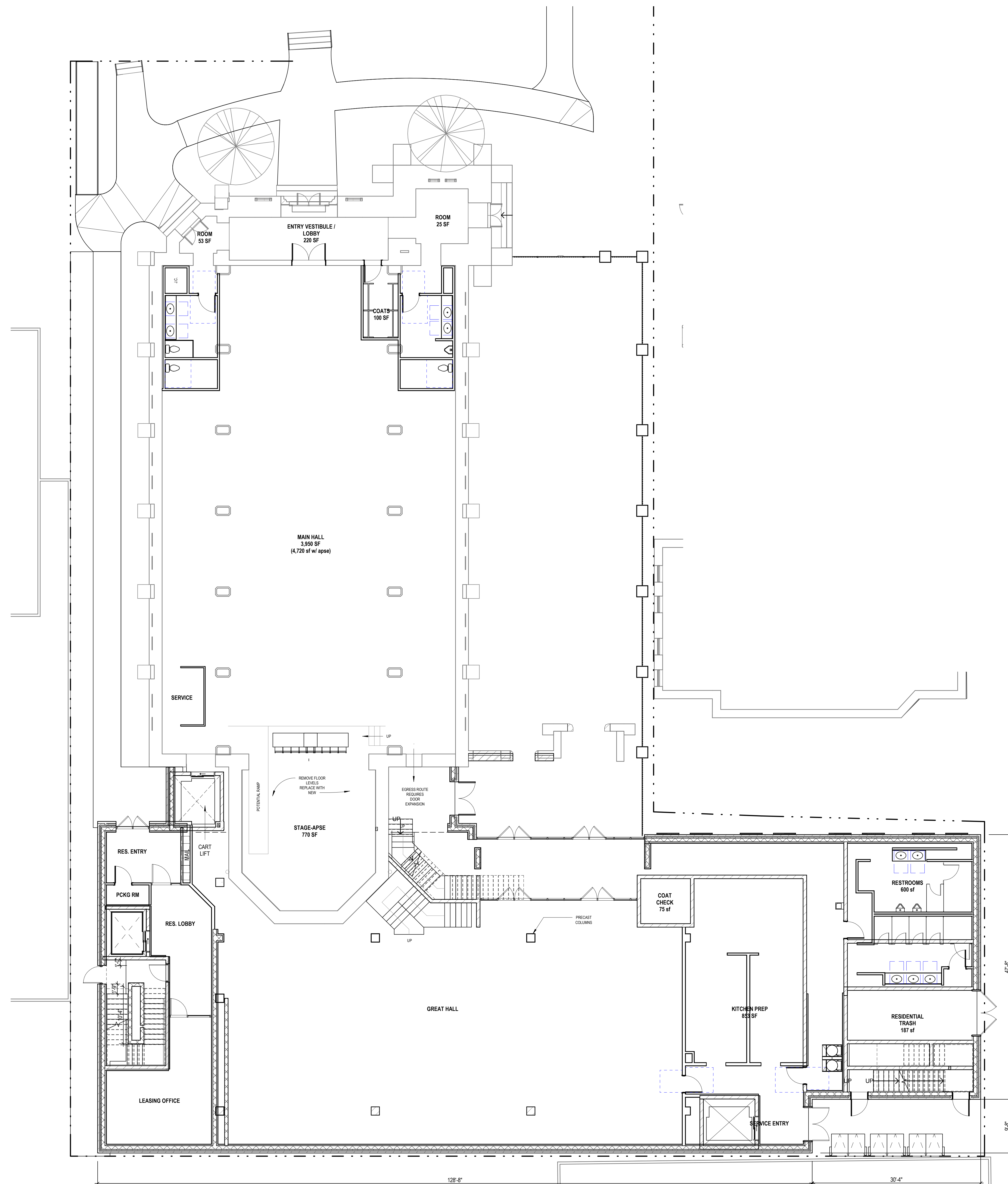
ISSUED FOR: HPC 02-05-2018

REVISION FOR: NO. DESCRIPTION DATE

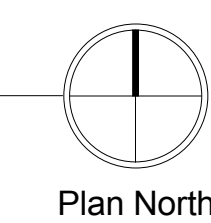
DRAWN BY MT

CHECKED BY JMR

FIRST FLOOR PLAN



1 LEVEL 1 PLAN - ADDITION
SCALE: 1/8" = 1'-0"



**St. James Episcopal
Church**

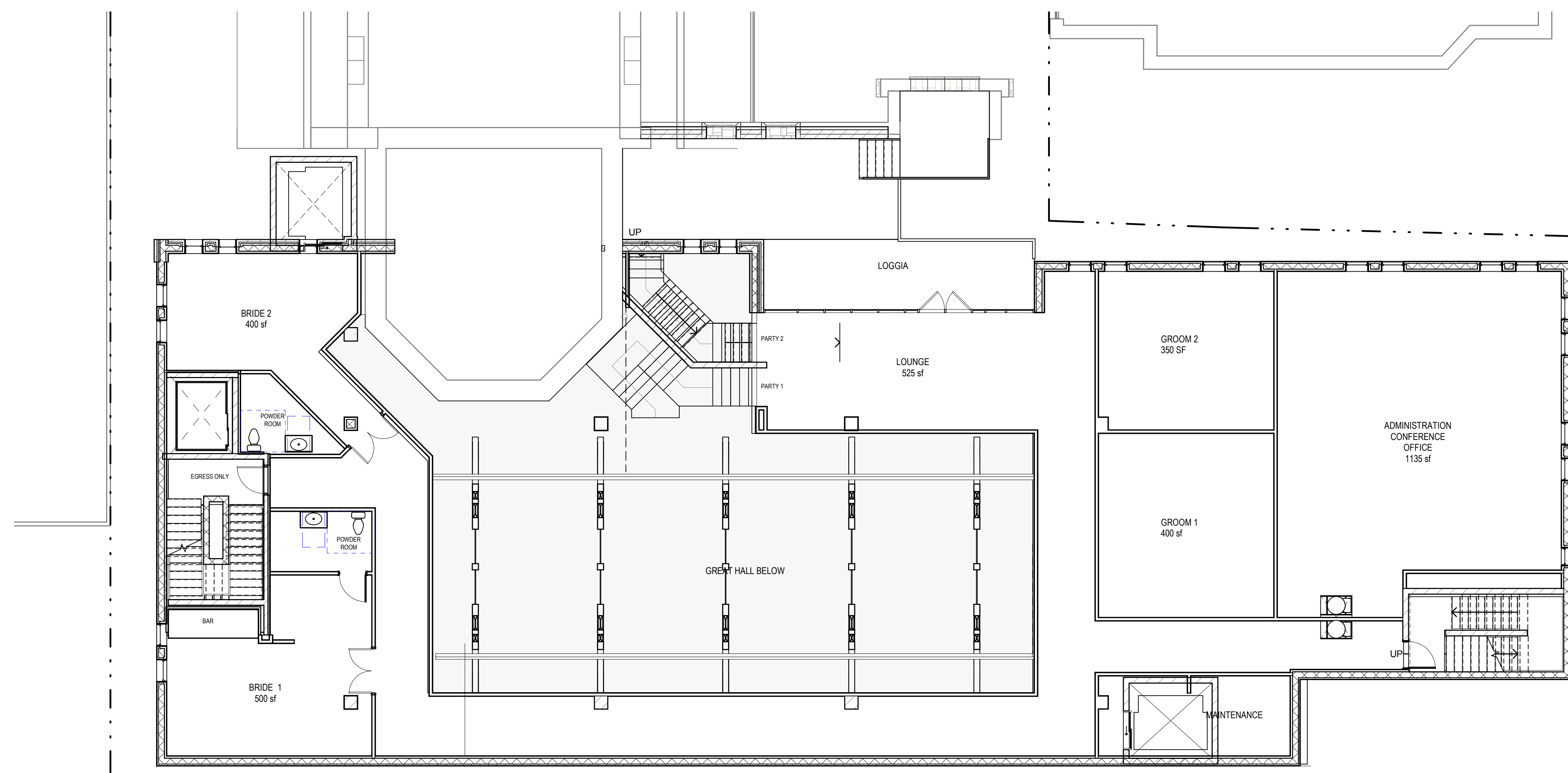
833 W. Wisconsin Avenue

J. Jeffers & Co.
225 E. Michigan St.
Suite 110
Milwaukee, WI 53202

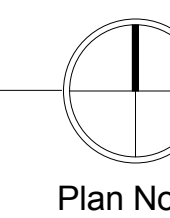
PROJECT NUMBER 172783

ISSUED FOR: HPC 02-05-2018

REVISION FOR: NO. DESCRIPTION DATE



1 SECOND FLOOR PLAN
SCALE: 1/8" = 1'-0"



DRAWN BY MT
CHECKED BY MRE

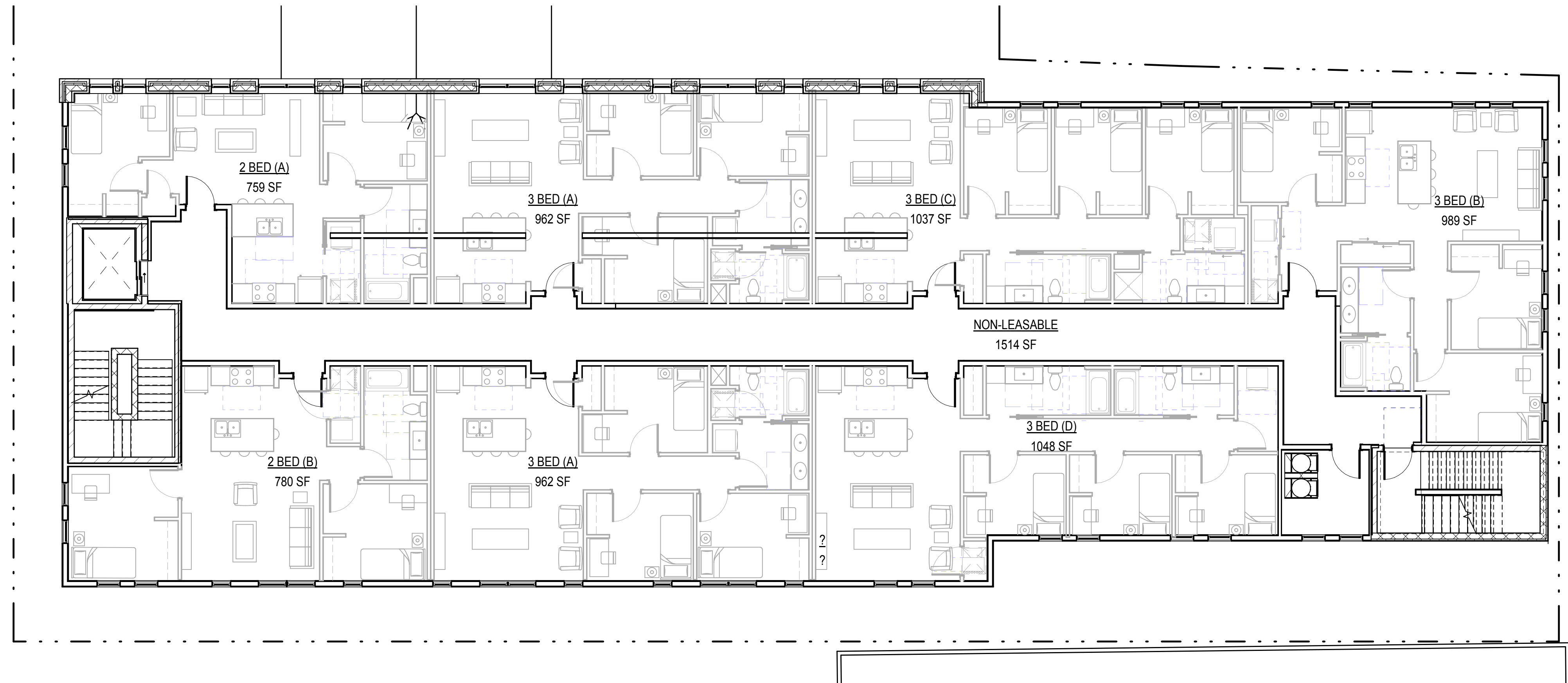
**SECOND FLOOR
PLAN**

St. James Episcopal
Church

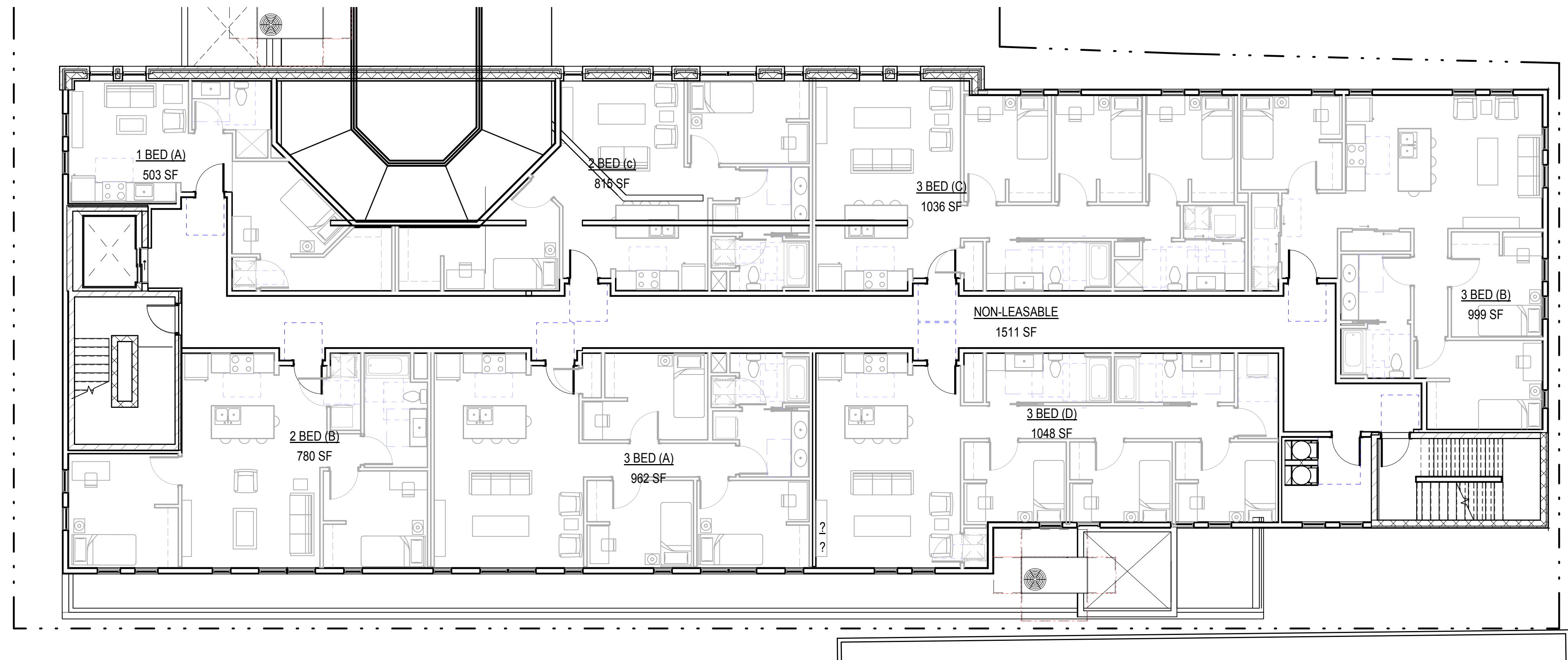
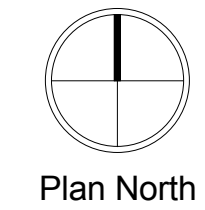
833 W. Wisconsin Avenue

J. Jeffers & Co.
225 E. Michigan St.
Suite 110
Milwaukee, WI 53202

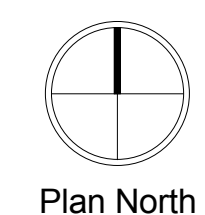
PROJECT NUMBER 172783



2 LEVEL 4
SCALE: 1/8" = 1'-0"



1 THIRD FLOOR PLAN
SCALE: 1/8" = 1'-0"



Area Schedule (Rentable Unit Mixes)

Unit Type	Area	#Bed rooms	# Baths
1 BED (A) 503 SF		2	1
2 BED (A) 759 SF		2	1
2 BED (A) 759 SF		2	1
2 BED (A) 759 SF		2	1
2 BED (A) 759 SF		2	1
2 BED (B) 780 SF		2	1
2 BED (B) 780 SF		2	1
2 BED (B) 780 SF		2	1
2 BED (B) 780 SF		2	1
2 BED (B) 780 SF		2	1
2 BED (c) 815 SF		3	1
3 BED (A) 962 SF		3	1
3 BED (A) 962 SF		3	1
3 BED (A) 962 SF		3	1
3 BED (A) 962 SF		3	1
3 BED (A) 962 SF		3	1
3 BED (A) 962 SF		3	1
3 BED (A) 962 SF		3	1
3 BED (A) 962 SF		3	1
3 BED (A) 962 SF		3	1
3 BED (A) 962 SF		3	1
3 BED (A) 962 SF		3	1
3 BED (A) 962 SF		3	1
3 BED (B) 999 SF		3	1
3 BED (B) 999 SF		3	1
3 BED (B) 999 SF		3	1
3 BED (B) 999 SF		3	1
3 BED (C) 1037 SF		3	2
3 BED (C) 1036 SF		3	2
3 BED (C) 1036 SF		3	2
3 BED (C) 1036 SF		3	2
3 BED (C) 1036 SF		3	2
3 BED (D) 1048 SF		3	2
3 BED (D) 1048 SF		3	2
3 BED (D) 1048 SF		3	2
3 BED (D) 1048 SF		3	2
3 BED (D) 1048 SF		3	2
3 BED (D) 1048 SF		3	2
35		95	45

DRAWN BY MT
CHECKED BY MRE

THIRD -SEVENTH
FLOOR PLAN

**St. James Episcopal
Church**

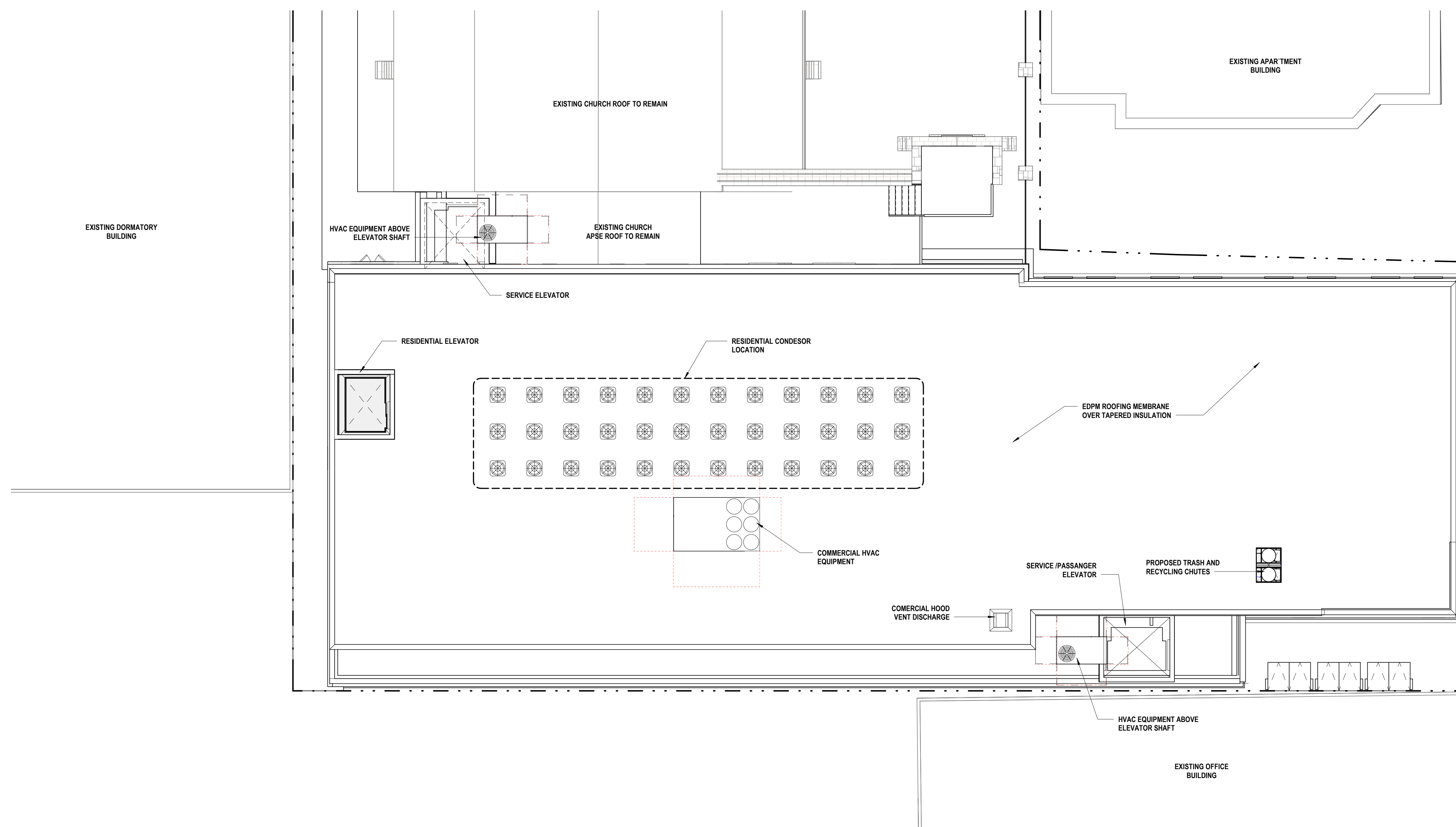
833 W. Wisconsin Avenue

J. Jeffers & Co.
225 E. Michigan St.
Suite 110
Milwaukee, WI 53202

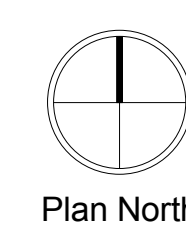
PROJECT NUMBER 172783

ISSUED FOR:
HPC 02-05-2018

REVISION FOR: DATE
NO. DESCRIPTION



1 ROOF PLAN
SCALE: 1/8" = 1'-0"



A180

DRAWN BY JMR
CHECKED BY MRE

ROOF PLAN

**St. James Episcopal
Church**

833 W. Wisconsin Avenue

J. Jeffers & Co.
225 E. Michigan St.
Suite 110
Milwaukee, WI 53202

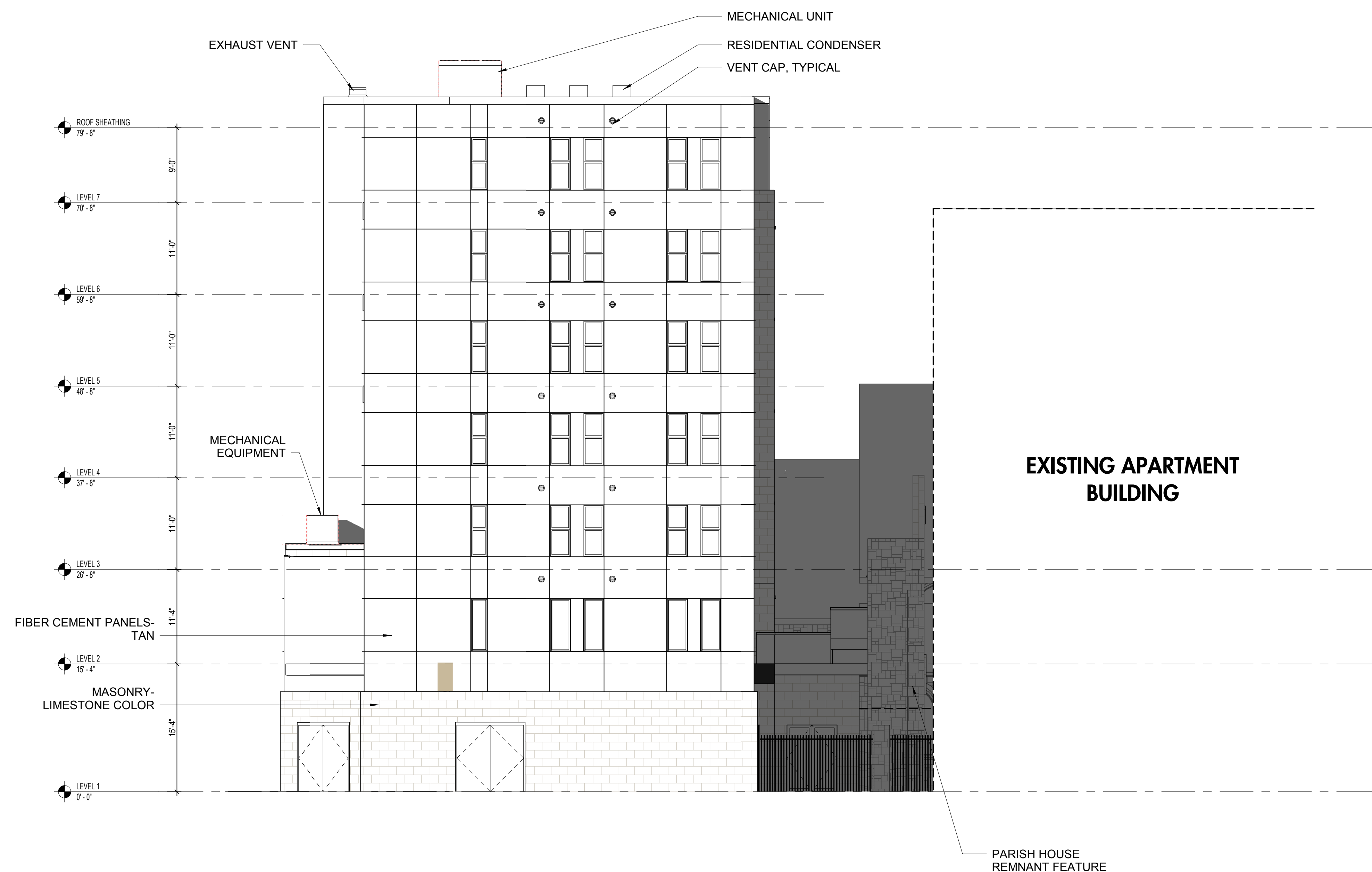
PROJECT NUMBER 172783

ISSUED FOR: HPC 02-05-2018

REVISION FOR: NO. DESCRIPTION DATE



2 NORTH ELEVATION
SCALE: 1/8" = 1'-0"



1 EAST ELEVATION FROM ALLEY
SCALE: 1/8" = 1'-0"

DRAWN BY TL
CHECKED BY MRE

ELEVATIONS

St. James Episcopal Church

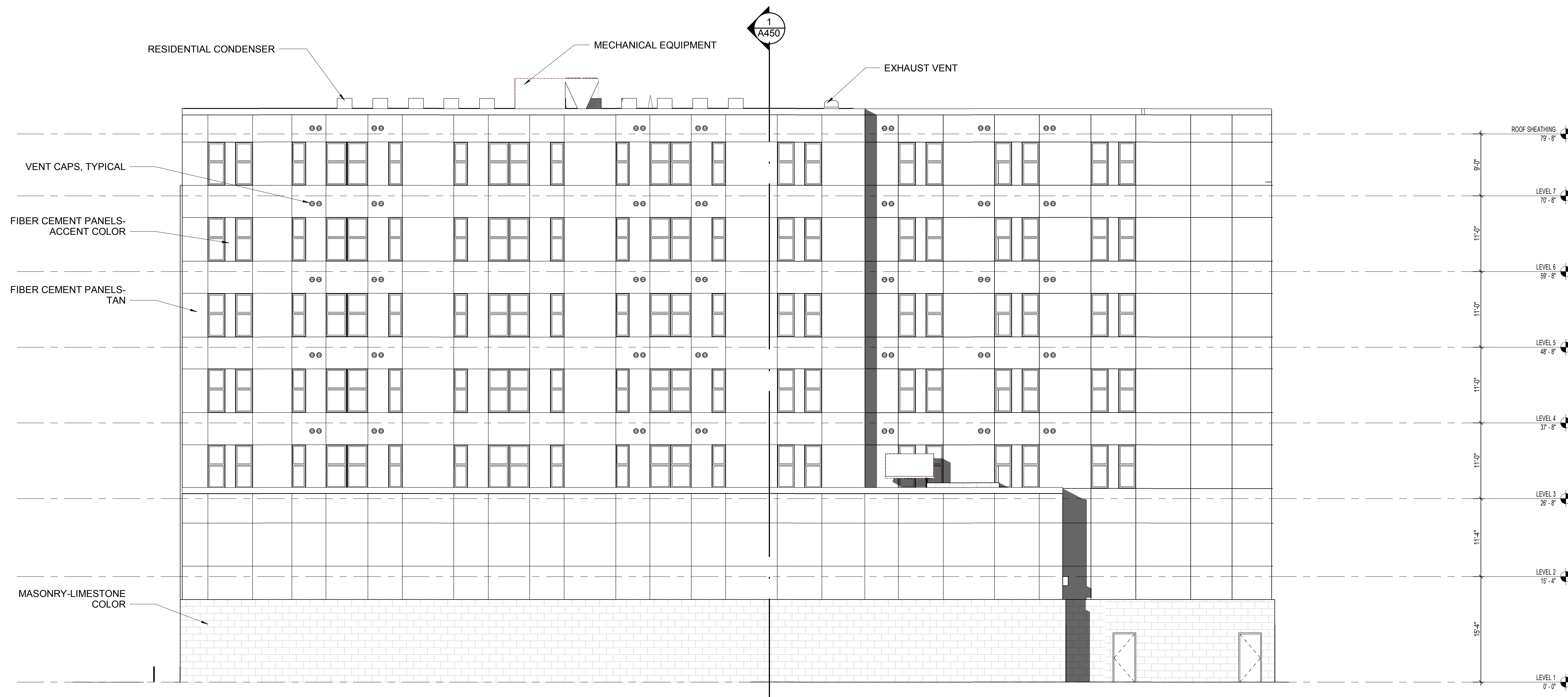
833 W. Wisconsin Avenue

J. Jeffers & Co.
225 E. Michigan St.
Suite 110
Milwaukee, WI 53202

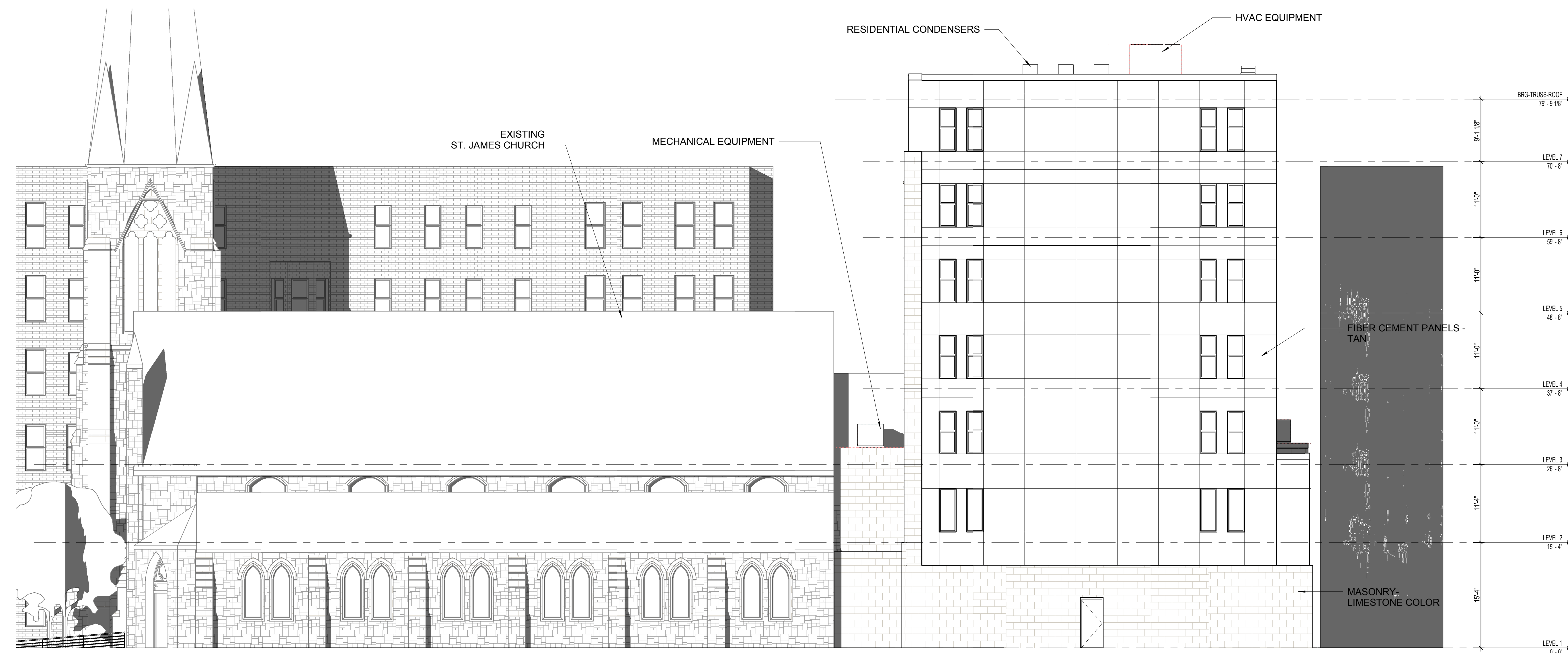
PROJECT NUMBER 172783

ISSUED FOR: HPC 02-05-2018

REVISION FOR: NO. DESCRIPTION DATE



1 SOUTH ELEVATION
SCALE: 1/8" = 1'-0"



2 WEST ELEVATION
SCALE: 1/8" = 1'-0"

DRAWN BY TL
CHECKED BY MRE

ELEVATIONS

**St. James Episcopal
Church**

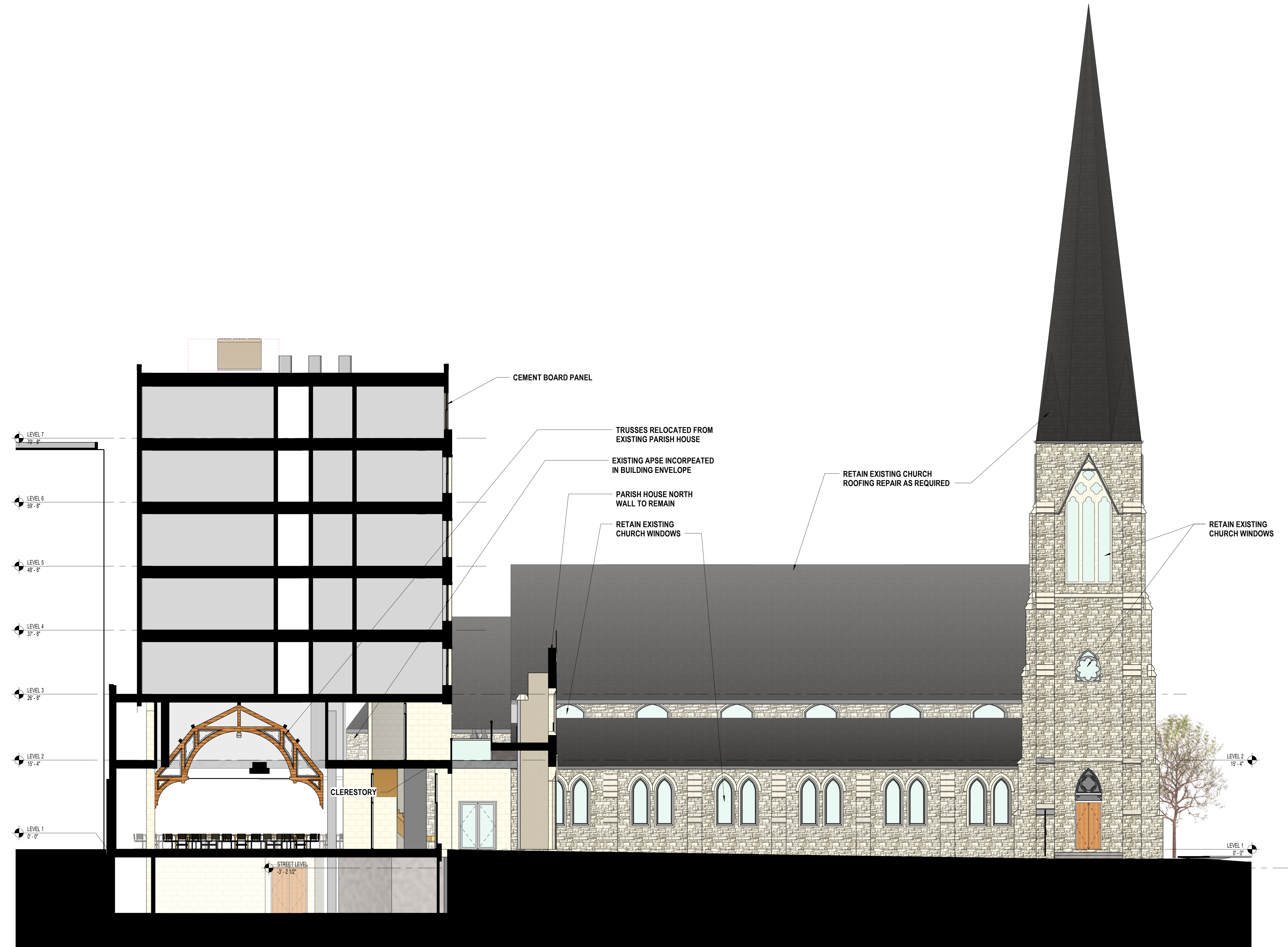
833 W. Wisconsin Avenue

J. Jeffers & Co.
225 E. Michigan St.
Suite 110
Milwaukee, WI 53202

PROJECT NUMBER 172783

ISSUED FOR: HPC 02-05-2018

REVISION FOR: NO. DESCRIPTION DATE



DRAWN BY TL
CHECKED BY MRE

BUILDING SECTIONS

1 BUILDING SECTION LOOKING WEST
SCALE: 1/8" = 1'-0"