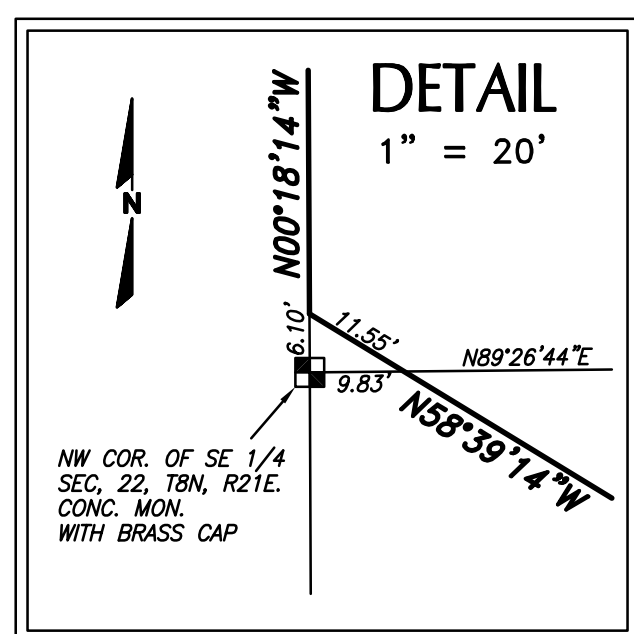


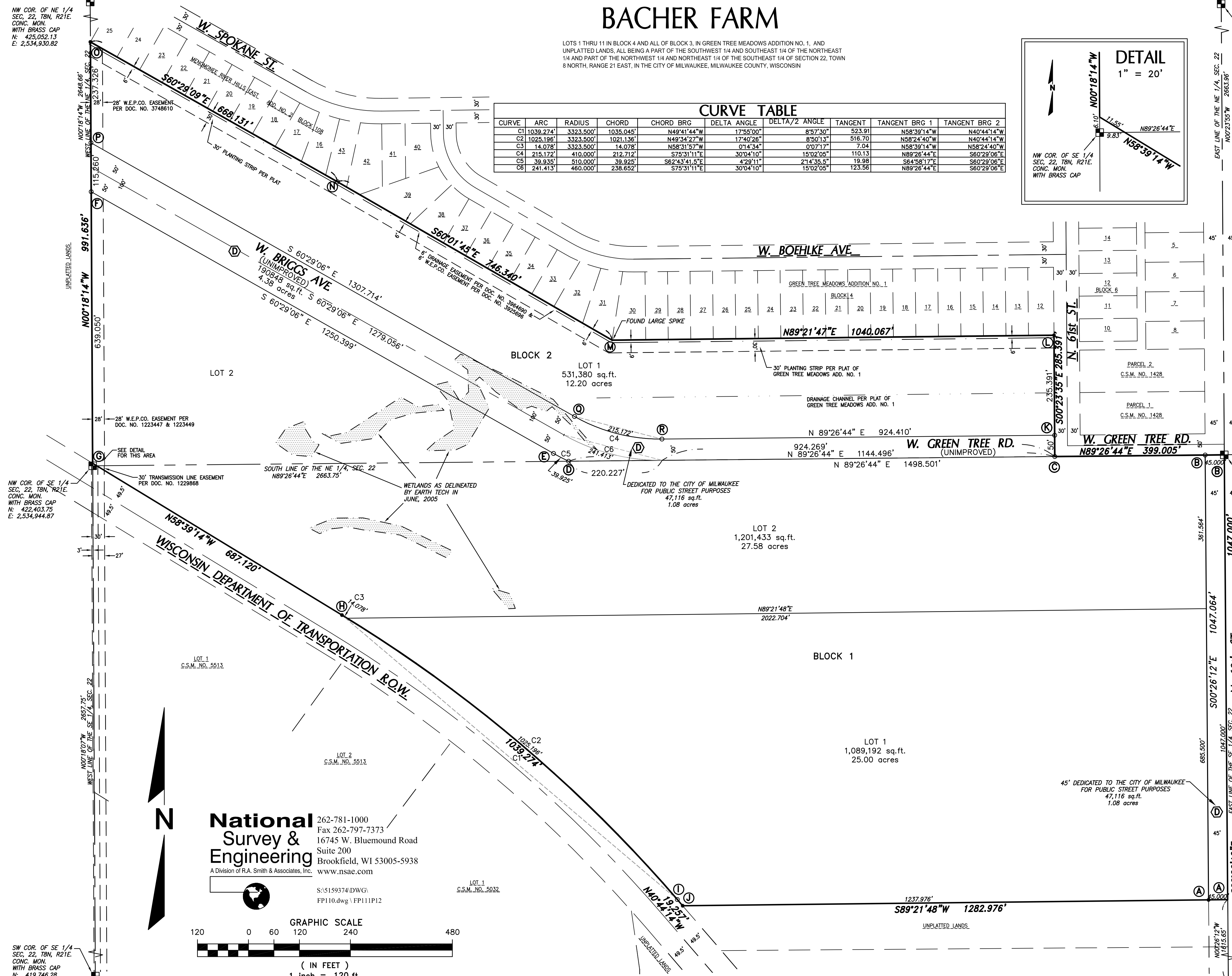
BACHER FARM

LOTS 1 THRU 11 IN BLOCK 4 AND ALL OF BLOCK 3, IN GREEN TREE MEADOWS ADDITION NO. 1, AND UNPLATTED LANDS, ALL BEING A PART OF THE SOUTHWEST 1/4 AND SOUTHEAST 1/4 OF THE NORTHEAST 1/4 AND PART OF THE NORTHWEST 1/4 AND NORTHEAST 1/4 OF THE SOUTHWEST 1/4 OF SECTION 22, TOWN 8 NORTH, RANGE 21 EAST, IN THE CITY OF MILWAUKEE, MILWAUKEE COUNTY, WISCONSIN

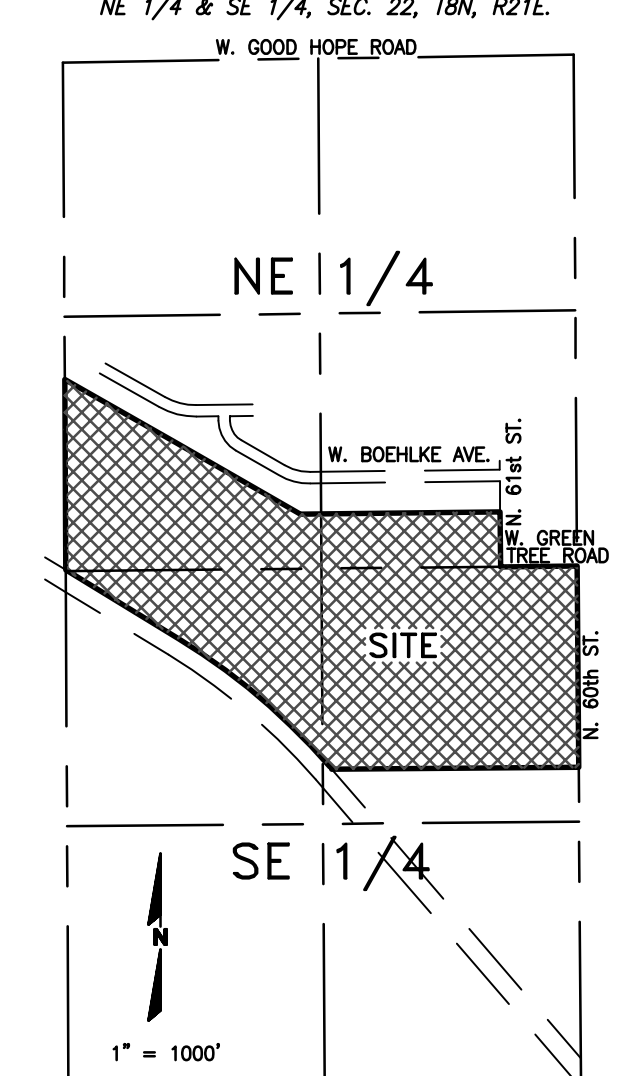
CURVE	ARC	RADIUS	CHORD	CHORD BRG	DELTA ANGLE	DELTA/2 ANGLE	TANGENT	TANGENT BRG 1	TANGENT BRG 2
C1	1039.274'	3323.500'	1035.045'	N49°41'44"W	17°55'00"	8°57'30"	523.91	N58°39'14"W	N40°44'14"W
C2	1025.196'	3323.500'	1021.136'	N49°34'27"W	17°40'26"	8°50'13"	516.70	N58°24'40"W	N40°44'14"W
C3	14.078'	3323.500'	14.078'	N58°31'57"W	0°14'34"	0°07'17"	7.04	N58°39'14"W	N58°24'40"W
C4	215.172'	410.000'	212.712'	S75°31'11"E	30°04'10"	15°02'05"	110.13	N89°26'44"E	S60°29'06"E
C5	39.935'	510.000'	39.925'	S62°43'41.5"E	4°29'11"	2°14'35.5"	19.98	S64°58'17"E	S60°29'06"E
C6	241.413'	460.000'	238.652'	S75°31'11"E	30°04'10"	15°02'05"	123.56	N89°26'44"E	S60°29'06"E



- LEGEND**
- INDICATES FOUND 1" IRON PIPE.
 - INDICATES SET 2" IRON PIPE, (2.315" O.D.) 18" IN LENGTH, WT. 3.65 LBS. PER LINEAL FOOT.
 - ALL OTHER CORNERS ARE SET 1" IRON PIPE, (1.315 O.D.) 18" IN LENGTH, WT. 1.68 LBS. PER LINEAL FOOT.
 - DIMENSIONS ALONG CURVES ARE ARC LENGTHS.
 - ALL DIMENSIONS MEASURED AND SHOWN TO THE NEAREST HUNDREDTH OF A FOOT.
 - BEARINGS REFERENCED TO THE WISCONSIN STATE PLANE COORDINATE SYSTEM (SOUTH ZONE), IN WHICH THE SOUTH LINE OF THE NE 1/4 OF SECTION 22, TOWN 8 NORTH, RANGE 21 EAST, BEARS N89°26'44"E. (DEC. 2005 DATUM)
 - D INDICATES DEDICATED TO THE CITY OF MILWAUKEE FOR PUBLIC STREET PURPOSES.



VICINITY MAP



INTERIOR ANGLES	ANGLE
A	90°12'00"
B	89°52'56"
C	27°09'41"
D	207°49'34.5"
E	182°14'35.5"
F	60°10'52"
G	121°39'00"
H	188°37'30"
I	188°37'30"
J	133°08'02"
K	90°09'41"
L	89°45'22"
M	210°36'28"
N	179°32'36"
O	60°10'55"
P	119°49'08"
Q	164°57'55"
R	164°57'55"

National Survey & Engineering
A Division of R.A. Smith & Associates, Inc.
www.nsaec.com

262-781-1000
Fax 262-797-7373
16745 W. Bluemound Road
Suite 200
Brookfield, WI 53005-5938

