

1432 1428 1424 1420
1434 1430 1426 1422
1410 1406 1400
1408 1402
S L of 1/4 SEC W. BURLEIGH ST. S L of 1/4 SEC

MICROFILMED 4-24-86

9

S.E. 12-7-21

ATLAS P 286

FOREST PARK

286

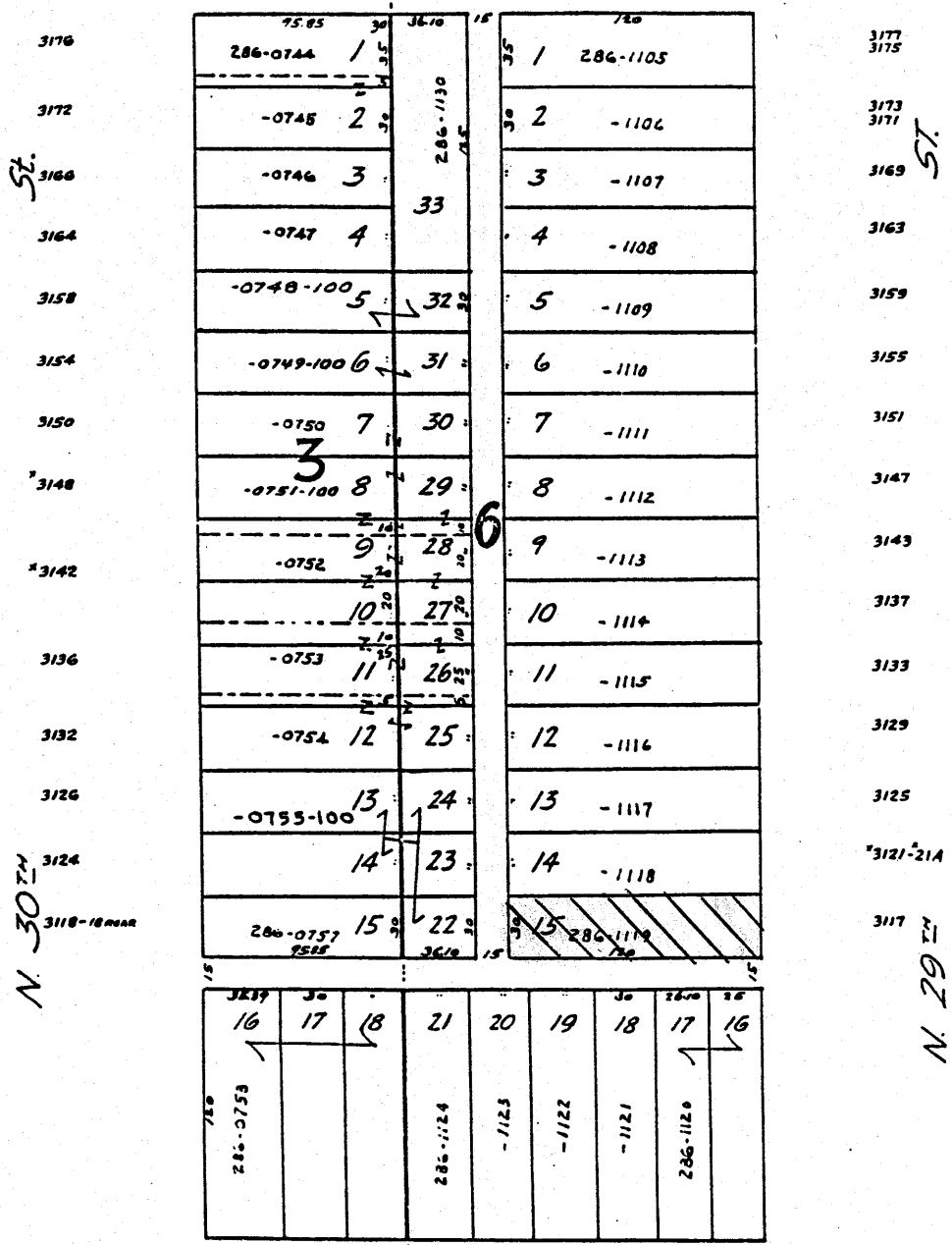
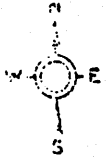
Warner Bros. & Wamboldt's Subd. No. 2

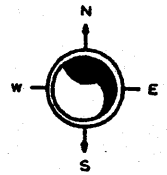
286-09

MANUFACTURING PLAT - STATE

W. AUER AVE.

2921
2919





PRUSSIAN HEIGHTS
W CLARKE ST

N 35TH ST

N 34TH ST

2576	33	40	120	326-1515	33	14	33	120	326-1477-100-2	33	2575
2572	30	39	326-1514	30			2	30		30	2573
2568		38	326-1513						326-1478	3	2571
2564		37	326-1512						326-1479	4	2565
2560		36	326-1511						326-1480	5	2563
2556		35	326-1510						326-1481	6	2557
2554		34	326-1509						326-1482	7	2555
2552		33	326-1508						326-1483	8	2553
2550		32	326-1507						326-1484	9	2551
2548		31	326-1506						326-1485	10	2549
2546		30	326-1505						326-1486	11	2547
2544		29	326-1504						326-1487	12	2545
2542		28	326-1503						326-1489	13	2541
2536		27	326-1502						326-1490	14	2537
2532		26	326-1501						326-1491	15	2533
2528		25	326-1500						326-1492	16	2527
2520		24	326-1499						326-1493	17	2521
2516		23	326-1498						326-1495	18	2519
2512		22	326-1496						326-1496	19	2517
2508		21	326-1495						326-1495	20	2515
2500	30	20	120	30	14	30	120	20	30	30	2511

270

3404

W WRIGHT ST

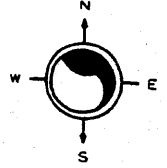
SE 13-7-21

ATLAS P. 326

326

326-32

SCALE 1" = 80'



PRUSSIAN HEIGHTS W CLARKE ST

N 35TH ST

N 34TH ST

2576	33 40 326-1515 33	14	33 120 326-1477-100-2 33	2575
2572	30 39 326-1514 30		30 2 30	2573
2568	38 326-1513		326-1478 3	2571
2564	37 326-1512		326-1479 4	2565A 2565
2560	36 326-1511		326-14805	2563 2561
2556	35 326-1510		326-14816	2557
2554 2552	34 326-1509		326-14827	2555 2553
2550 2548	33 326-1508		326-14838	2551 2549
2546 2544	32 326-1507		326-14849	2547 2545
2542	31 326-1506		326-14850	2541
2536	30 326-1505	4	326-148611	2537
2532	29 326-1504		12 1	2533
2528	28 326-1503-100-2 27		326-1487-100-1 13 1	
2520	26 326-1501		326-1489 14	2527
2516	25 326-1500		326-1490 15	2521
2512	24 326-1499		326-1491 16	2519 2517
2508	23 326-1498		326-1492 17	2515
	22 326-1496-100-6		326-1493-100-2 18 1	2511
2500	21 120 30	14	326-1495 120 20 30	2501

271

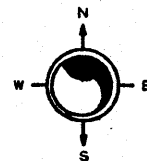
W WRIGHT ST

NW 01-7-21
ATLAS P. 229

229

229-01
SCALE 1" = 80'

NORTH MILWAUKEE SUBDIVISION NO. 1
W HAMPTON AV



3533 (REAR)	3531 (REAR)	3529-29A 29B-29C 3525-25A	3517	3511 3529-29B	3509-09A
30	30	30	30	30	30
8	7	6	5	4	3
229-1108	229-1107 98	229-1106	229-1105	229-1104	229-1103-100
120	120	120	120	120	120
30	30	30	30	30	30
					51 48.5 80 100 100 51

N 36TH ST

N 35TH ST

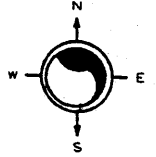
4768	31.07	9	120	30.58	15	30.52	126	44	30.39	14
		229-1110				229-1144				
4764	30	10	229-1111	30		229-1143	43		30	
4760		11	229-1112			229-1142	42			
4758		12	229-1113			229-1141	41			
4752		13	229-1114			229-1140	40			
4748		14	229-1115			229-1139	39			
4746		15				229-1138	38			
		16	229-1116			229-1137	37			
4736		17	229-1117			229-1136	36			
4732		18	229-1118			229-1135	35			
4728		19	229-1119			229-1134	34			
4724		20	229-1120			229-1133	33			
4720A		21	229-1121			229-1132	32			
4720		22	229-1122			229-1131	31			
4716		23	229-1123			229-1130	30			
4714		24	229-1124			229-1129	29			
4712		25	229-1125			229-1128	28			
4708		26	229-1126			229-1127	27			
4706		30	120	30	15	30	126	27	30	
4700										

W COURTLAND AV

NW 18-7-22
ATLAS P. 310

310

310-24
SCALE 1" = 80'

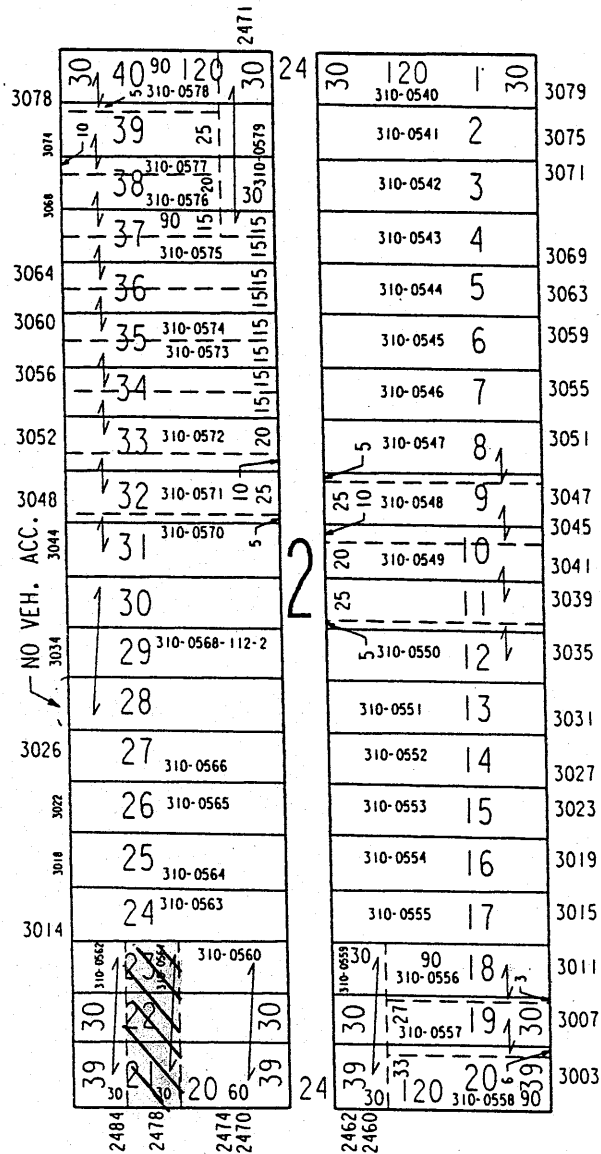


CAWKER'S SUBDIVISION "B"

W BURLEIGH ST

N 25TH ST

N 24TH PL

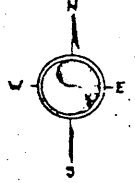


W CHAMBERS ST

S.E. 8-7-22
ATLAS P. 282

282
V. 22 P. 40
JAC. TRUSS SUBD.

282-04



E. RING ST. #229

ST.

3248
3244

3242
3240

3236
3234

3230

3224

3220
3218

3214

3208

(ISLAND AVE.)

N. Palmer

282-2546 F4462 20	1 282-2531 F4447
F4461 2	2 F4448 -2532
-2545 19	3 F4449 -2533
F4460 2	4 F4450 -2534
-2544 18	5 F4451 -2535
F4459 17	6 F4452 -2536
-2543 16	7 F4453 -2537
F4458 2	8 F4454 -2538
-2542 15	9
F4457 14	10
F4456 13	
-2540 12	
F4455 2	
-2539 11	

3235

3231

3227

3223

3217
3215

3213
3211

3207

3203
3201

*3185A
*3185

N. RICHARDS ST.

LAND

VOLKMAN SUBD. ADJ. ON S.

MICROFILMED

11

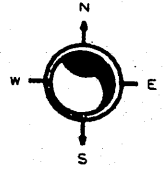
SE 08-7-22

ATLAS P. 282

282

282-10

SCALE 1" = 80'



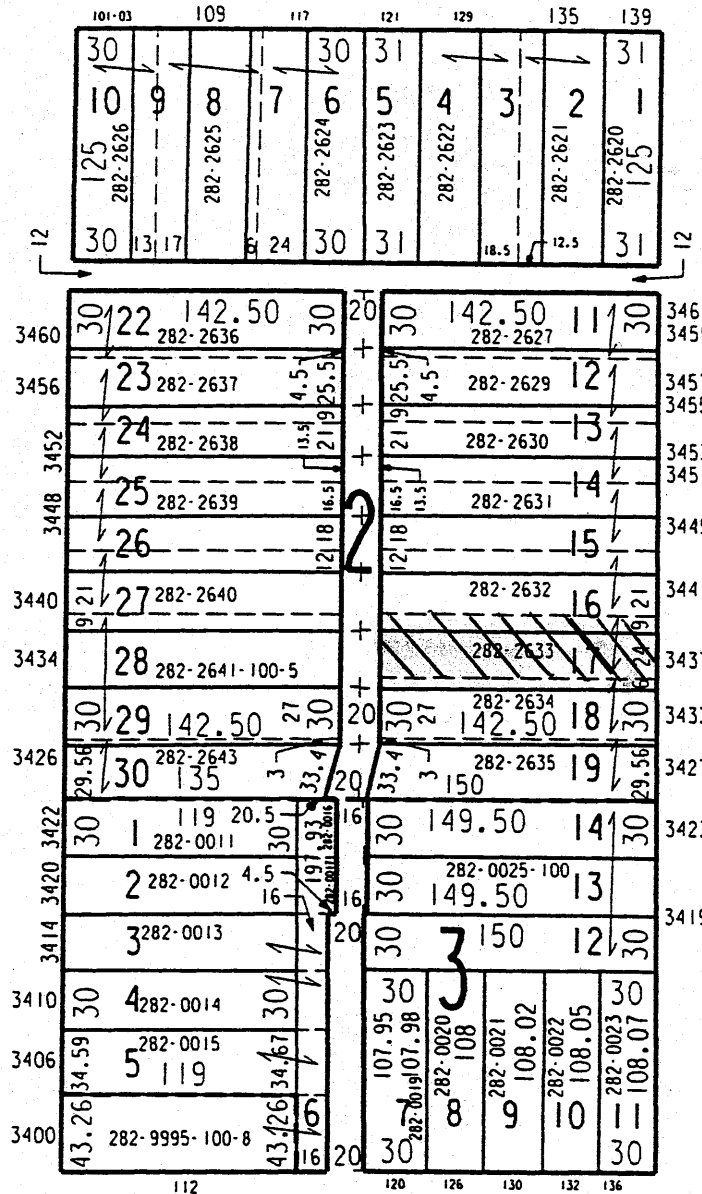
ULLRICH'S SUBDIVISION

E KEEFFE AV

N 1ST ST

N PALMER ST

ADLER, FIEBRANTZ
& MUELLER
SUBDIVISION NO. 1



E TOWNSEND ST

LANDS

