

N.E. 1/4 SEC. 32, T.7N., R.22E.

428

429

N.W. 1/4 SEC. 33, T.7N., R.22E.

E. Pittsburgh (R.O.W. VARIES)

Ave.

St.

(60' R.O.W.)

S. Barclay

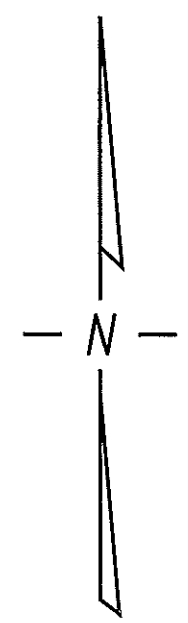
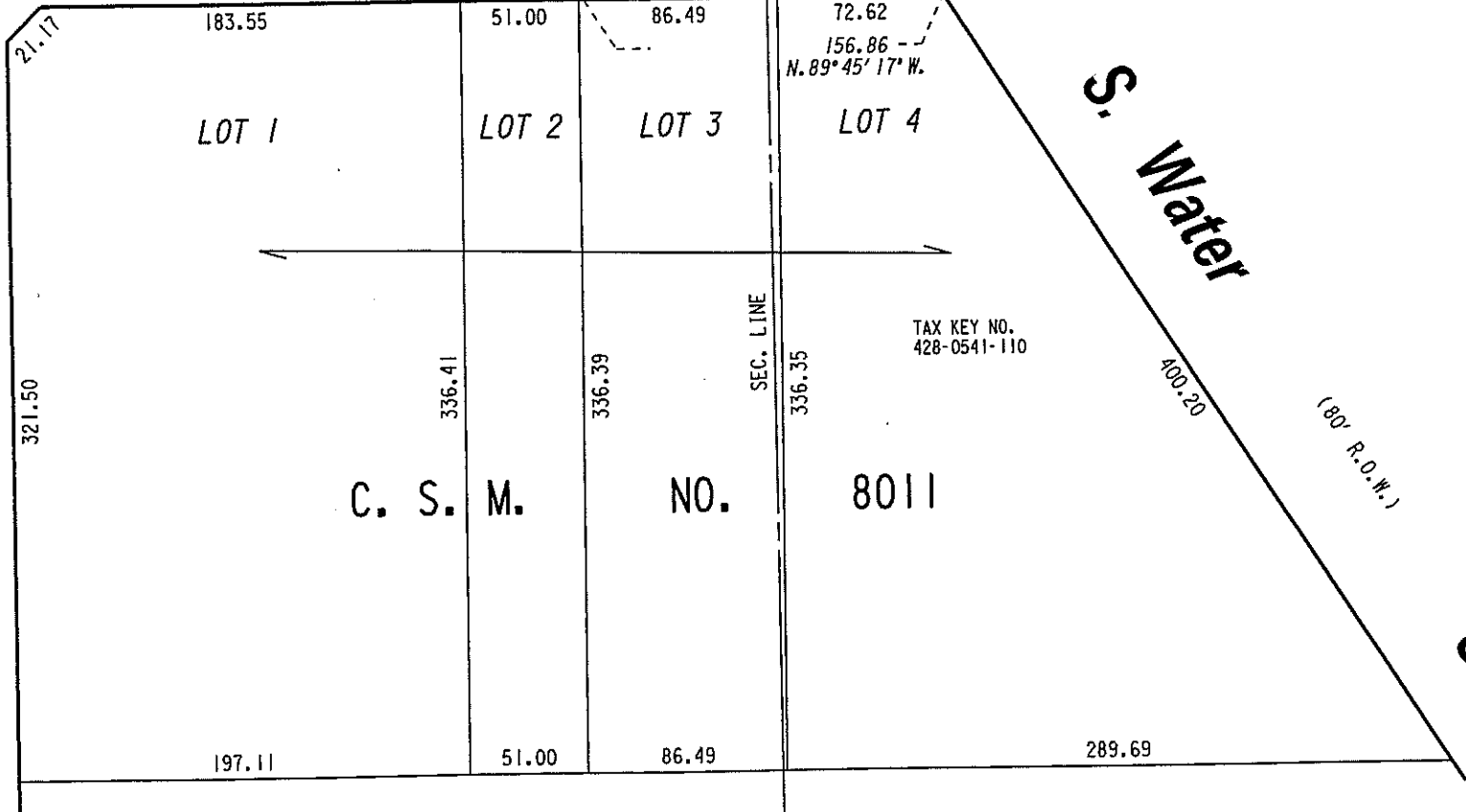
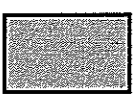


EXHIBIT "A"
 FILE NO. 071176
 INFRASTRUCTURE SERVICES DIVISION
 MILWAUKEE, WISCONSIN

 PORTION OF PUBLIC STREET PROPOSED TO BE VACATED

ASSIGNED TO: W.E. FUCHS
 DRAWN BY: W.E.F.
 PROJECT/GRANT NO.: WK52337255
 APPROVED BY:

CH'K'D. BY: W.E. FUCHS
 DATE: FEB. 14, 2008
 SCALE: 1" = 80'

marisa lindholm
 CENTRAL DRAFTING & RECORDS MANAGER

[Signature]
 CITY ENGINEER