

**WESTLAWN REDEVELOPMENT**

6331 W Silver Spring Dr  
Milwaukee, WI 53218

**Torti Gallas and Partners, Inc.**  
1300 Spring Street,  
4th Floor  
Silver Spring, MD 20910  
301.588.4800  
www.tortigallas.com

Owner  
**Housing Authority of the City of Milwaukee**  
414.286.3629

Local Architect  
**KINDNESS**  
architecture + planning  
517 e monomonee st. MILWAUKEE WI 53202  
Kindness Architecture and Planning  
414.763.3673

Civil Engineer  
**N** Norris and Associates  
414.365.5314

Civil Engineer  
**R.A. Smith National, Inc.**  
Beyond Surveying and Engineering  
R.A. Smith National  
262.317.3232

Landscape Architect  
**SAA**  
Schreiber Anderson Associates  
608.441.3582

Issue  
No.                      Date

Revisions  
No.                      Date

Single Family  
Sample 1  
Elevations  
Family Style 1

Date  
10-01-2010  
Principal In Charge  
M.A.  
Project Planner  
J.L.  
Project Architect  
M.A.  
Project Manager  
W.F.  
Drawn  
J.L., A.K., G.M., B.T.

Job No.  
08265.01  
Scale  
As indicated

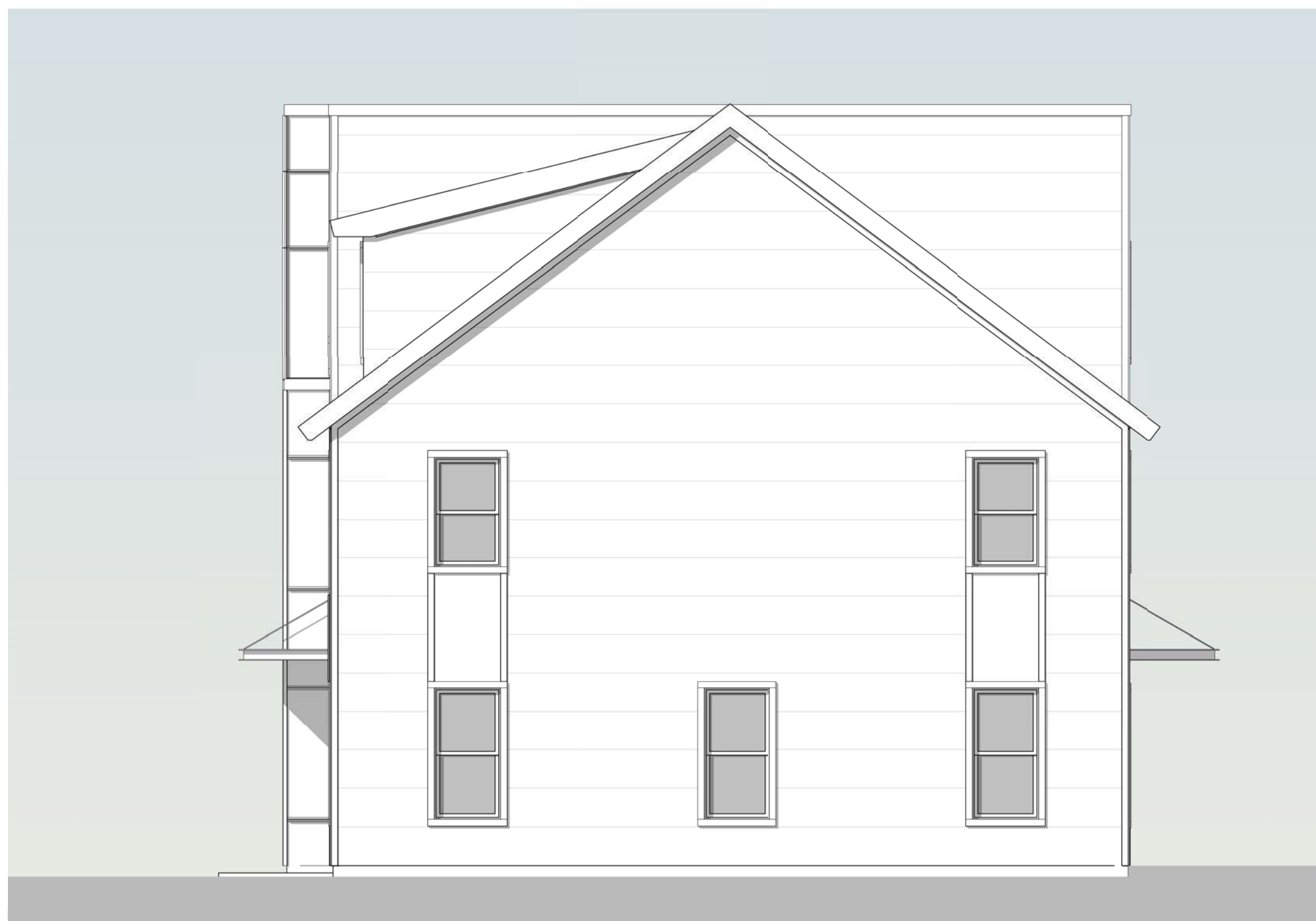
Drawing No.  
**A101**

WESTLAWN REDEVELOPMENT

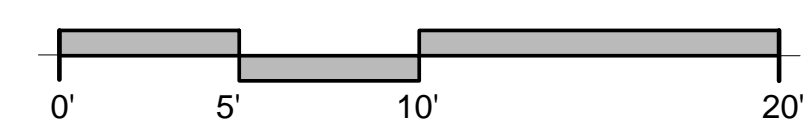
TORTI GALLAS AND PARTNERS, INC.



**FRONT (STREET) ELEVATION**

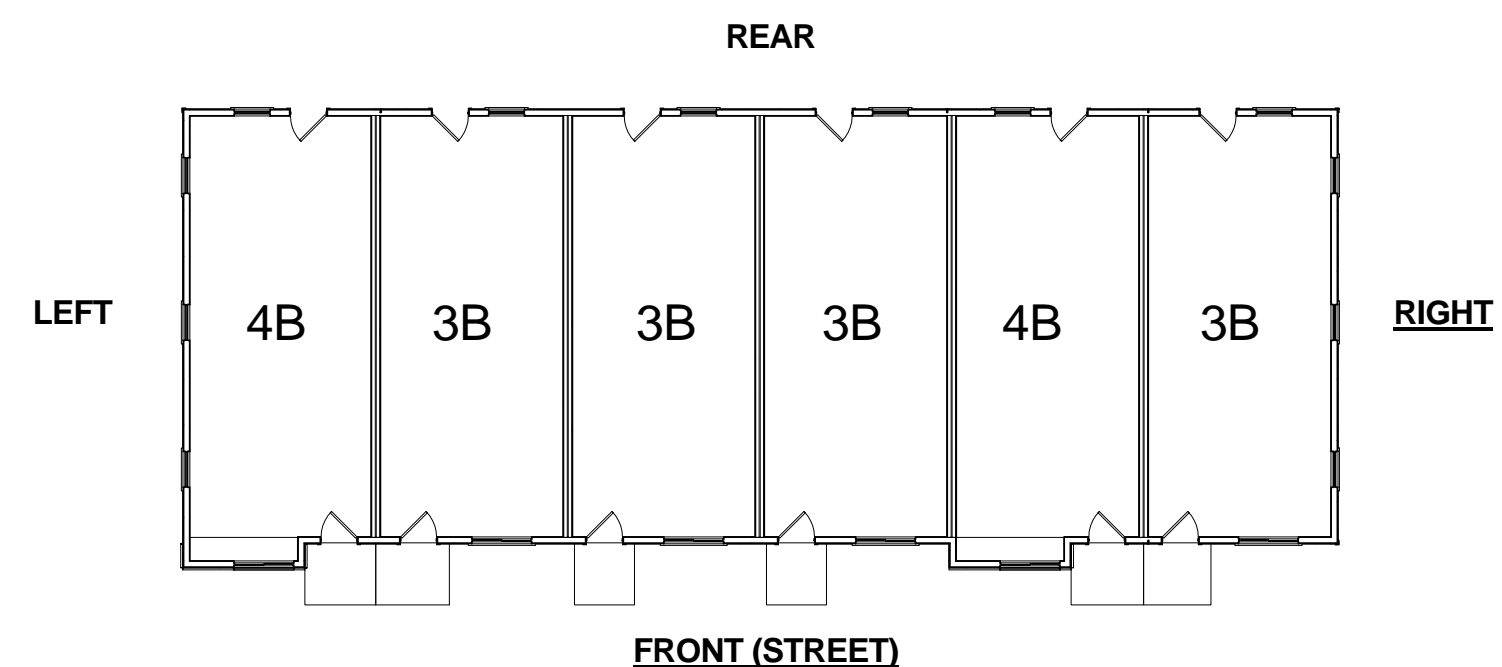


**RIGHT ELEVATION**



**Building Materials**

- Cementitious siding and panels
- Vinyl windows and doors
- Precast concrete
- Metal or wood railing at balconies
- Asphalt shingles
- Metal roofing
- Pre manufactured Trim and Columns



**KEY PLAN**

**WESTLAWN  
REDEVELOPMENT**

6331 W Silver Spring Dr  
Milwaukee, WI 53218

**Torti Gallas and Partners, Inc.**  
1300 Spring Street,  
4th Floor  
Silver Spring, MD 20910  
301.588.4800  
www.tortigallas.com

**Owner**  
Housing Authority of  
the City of Milwaukee  
414.286.3629

**Local Architect**  
**KINDNESS**  
architecture + planning  
517 e monomonee st. MILWAUKEE WI 53202  
Kindness Architecture and  
Planning  
414.763.3673

**Civil Engineer**  
**N** Norris and Associates  
414.365.5314

**Civil Engineer**  
**R.A. Smith National, Inc.**  
Beyond Surveying  
and Engineering  
R.A. Smith National  
262.317.3232

**Landscape Architect**  
**SAA**  
Schreiber Anderson Associates  
608.441.3582

**Issue**  
No.                      Date

**Revisions**  
No.                      Date

**Single Family  
Sample 1  
Elevations  
Family Style 1**

Date  
10-01-2010  
Principal In Charge  
M.A.  
Project Planner  
J.L.  
Project Architect  
M.A.  
Project Manager  
W.F.  
Drawn  
J.L., A.K., G.M., B.T.

Job No.  
08265.01

Scale  
As indicated

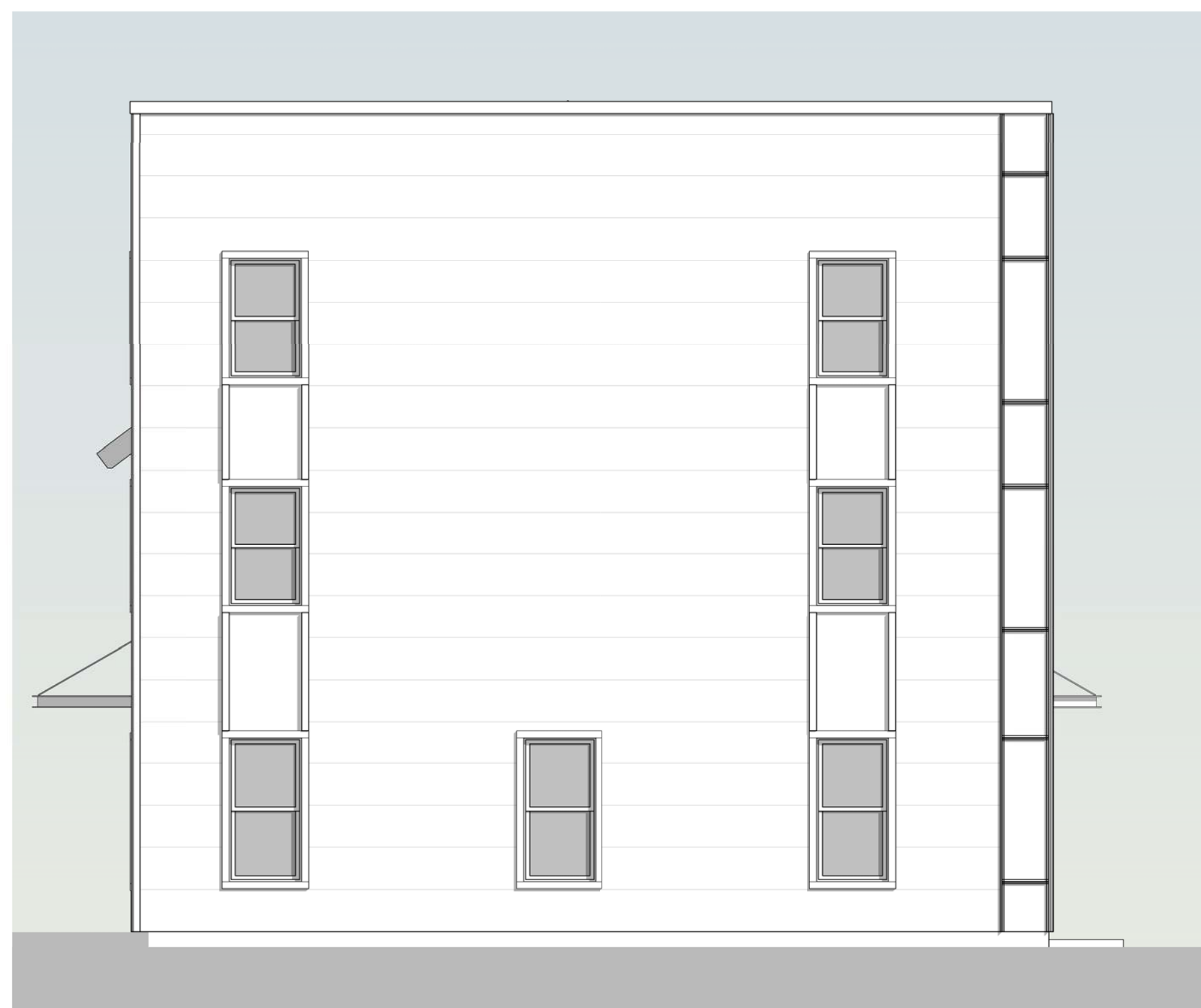
Drawing No.  
**A102**

WESTLAWN REDEVELOPMENT

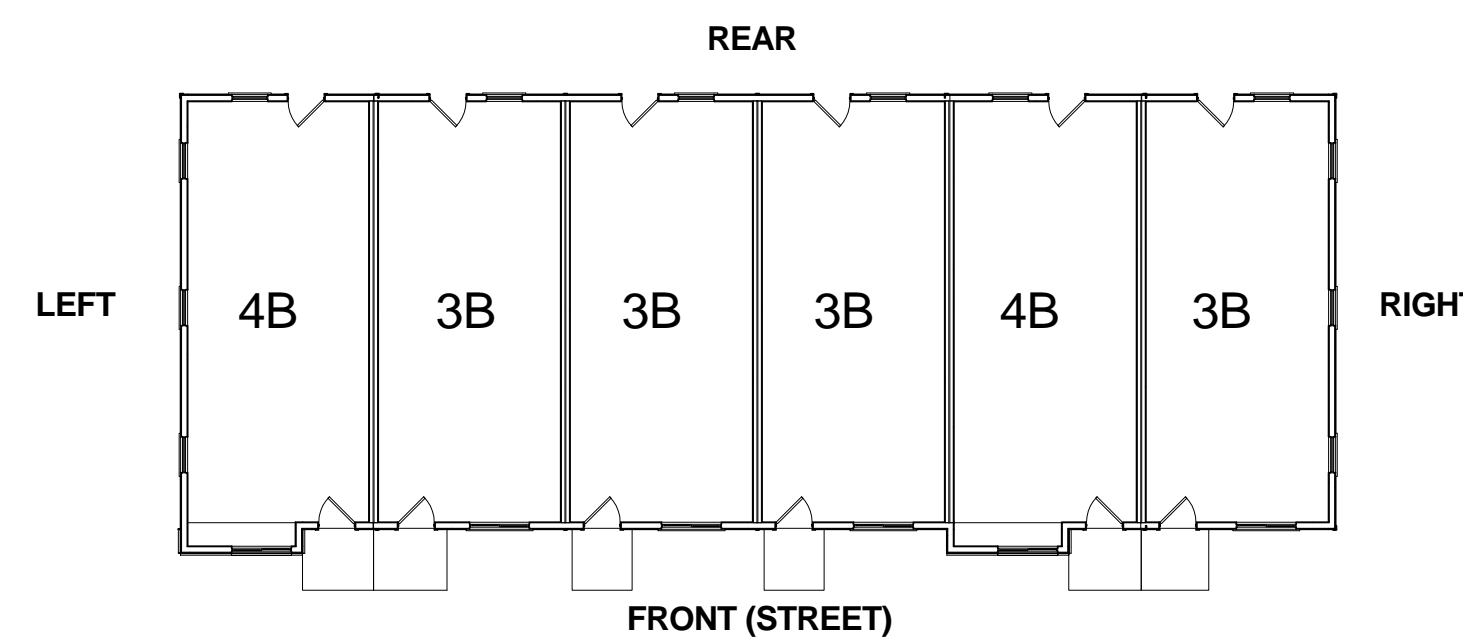
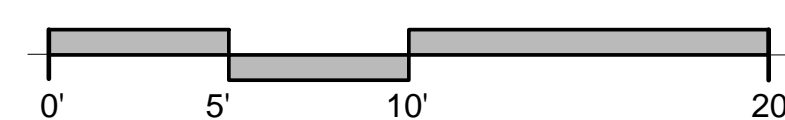
TORTI GALLAS AND PARTNERS, INC.



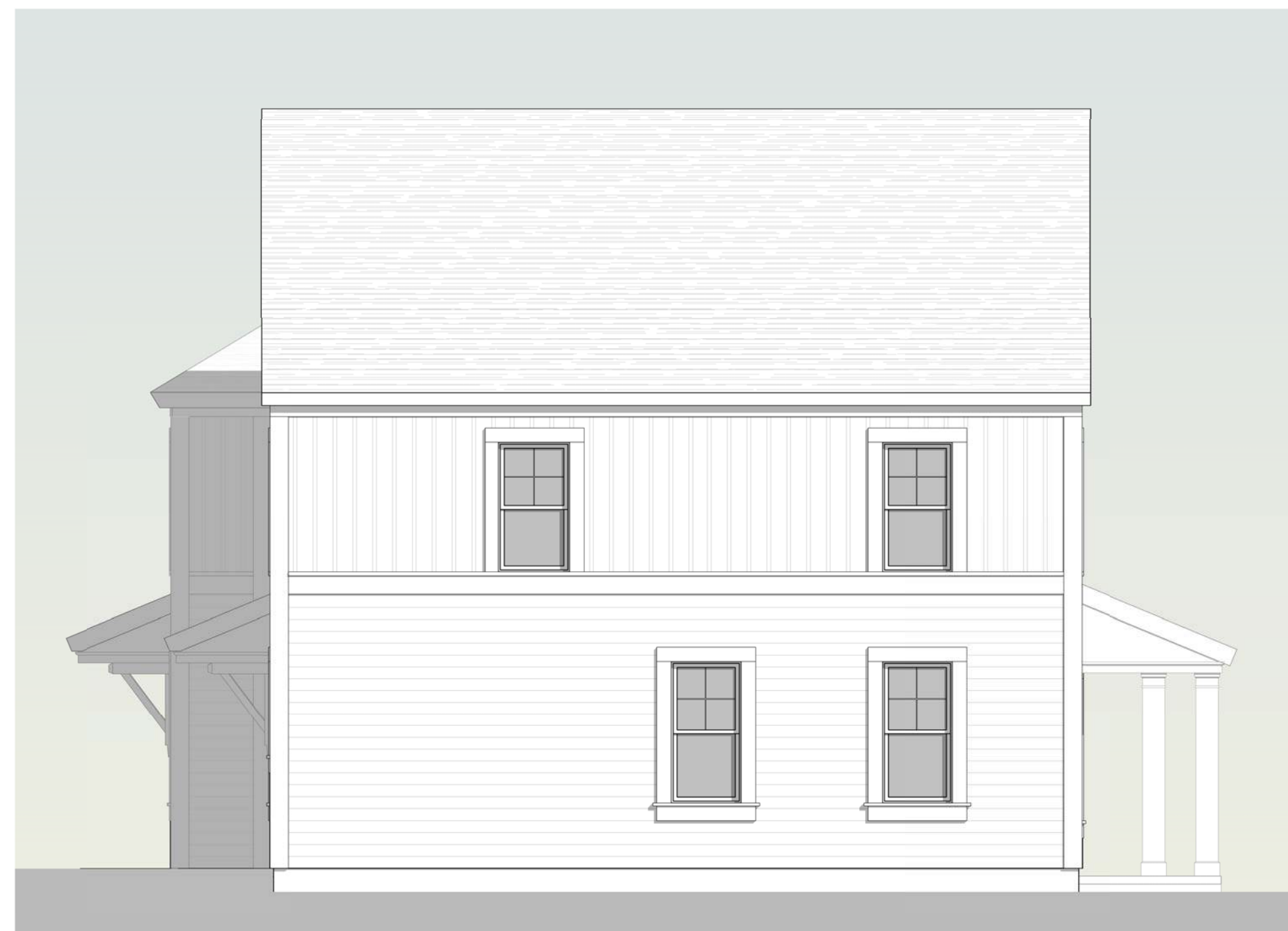
**REAR ELEVATION**



**LEFT ELEVATION**



**KEY PLAN**



LEFT ELEVATION



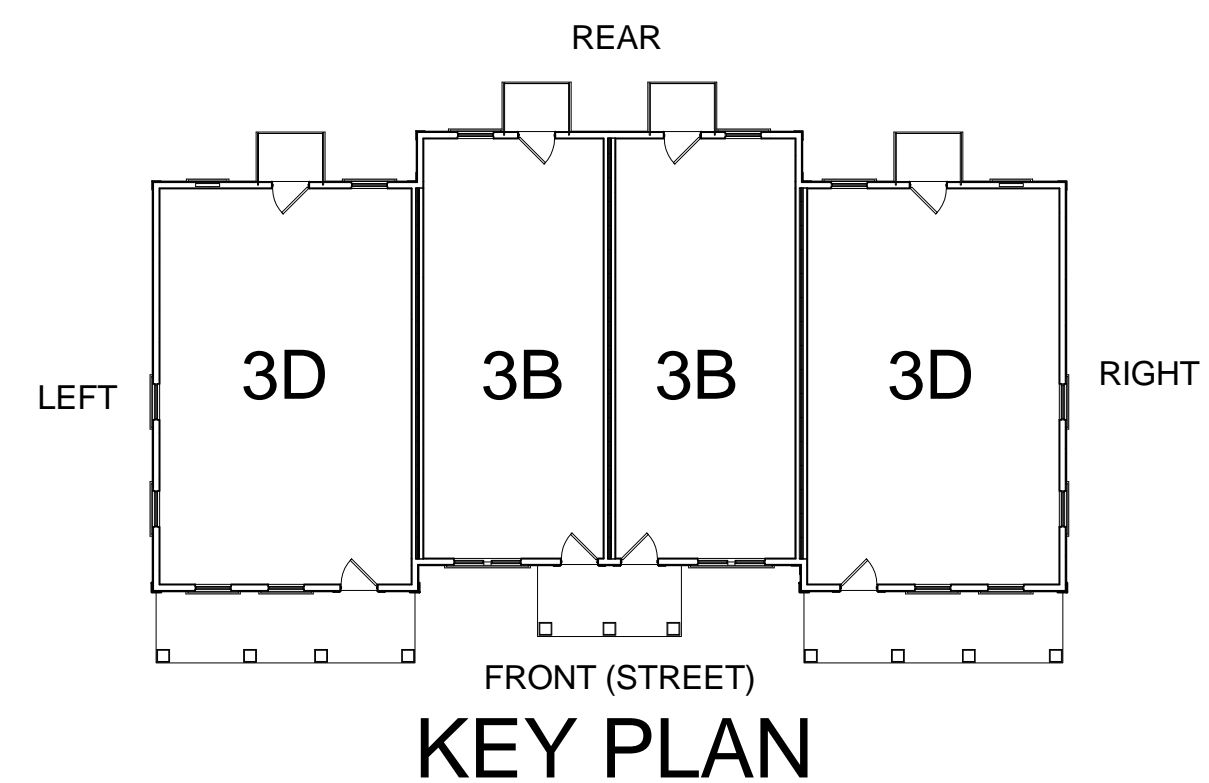
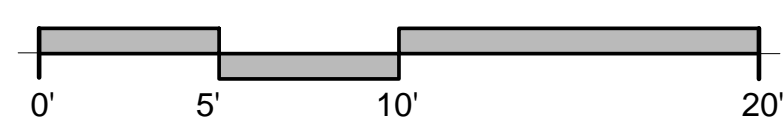
REAR ELEVATION



RIGHT ELEVATION



FRONT (STREET) ELEVATION



- Building Materials**
- Cementitious siding and panels
  - Vinyl windows and doors
  - Precast concrete
  - Metal or wood railing at balconies
  - Asphalt shingles
  - Metal roofing
  - Premanufactured Trim and Columns

**WESTLAWN REDEVELOPMENT**

6331 W Silver Spring Dr  
Milwaukee, WI 53218

**Torti Gallas and Partners, Inc.**  
1300 Spring Street,  
4th Floor  
Silver Spring, MD 20910  
301.588.4800  
www.tortigallas.com

Owner  
**Housing Authority of the City of Milwaukee**  
414.286.3629

Local Architect  
**KINDNESS**  
architecture + planning  
517 e monomonee st. MILWAUKEE WI 53202  
Kindness Architecture and Planning  
414.763.3673

Civil Engineer  
**Norris and Associates**  
414.365.5314

Civil Engineer  
**R.A. Smith National, Inc.**  
Beyond Surveying and Engineering  
R.A. Smith National  
262.317.3232

Landscape Architect  
**SAA**  
Schreiber Anderson Associates  
608.441.3582

Issue No. Date

Revisions No. Date

**Single Family Sample 2 Elevations Family Style 3**

Date 10-01-2010

Principal In Charge M.A.

Project Planner J.L.

Project Architect M.A.

Project Manager W.F.

Drawn J.L., A.K., G.M., B.T.

Job No. 08265.01

Scale As indicated

Drawing No.

**A103**

DPD Submission

**TORTI GALLAS AND PARTNERS, INC.**



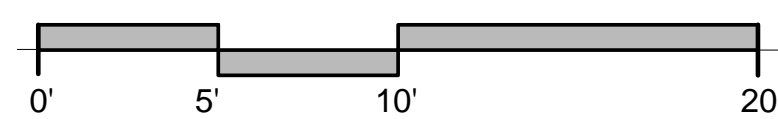
RIGHT ELEVATION



REAR ELEVATION

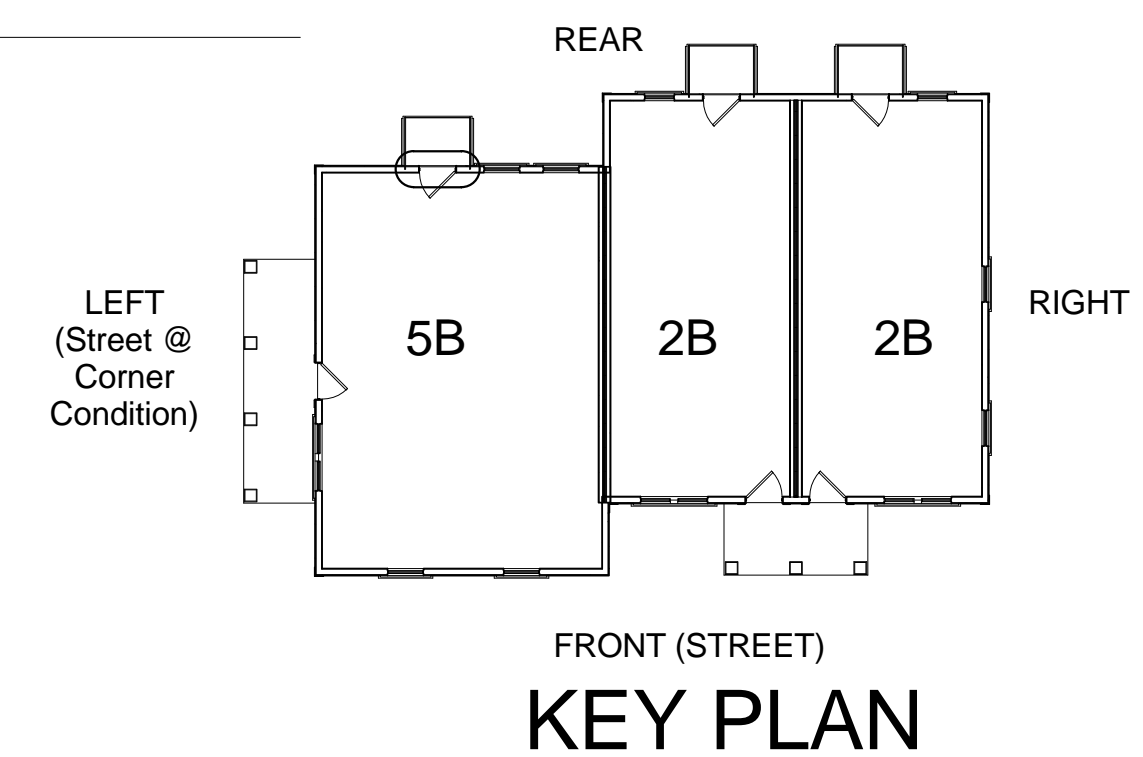


LEFT (STREET AT CORNER CONDITION)



FRONT (STREET) ELEVATION

- Building Materials**
- Cementitious siding and panels
  - Vinyl windows and doors
  - Precast concrete
  - Metal or wood railing at balconies
  - Asphalt shingles
  - Metal roofing
  - Pre-manufactured Trim and Columns



**WESTLAWN REDEVELOPMENT**

6331 W Silver Spring Dr  
Milwaukee, WI 53218

**Torti Gallas and Partners, Inc.**  
1300 Spring Street,  
4th Floor  
Silver Spring, MD 20910  
301.588.4800  
www.tortigallas.com

Owner  
**Housing Authority of the City of Milwaukee**  
414.286.3629

Local Architect  
**KINDNESS**  
architecture + planning  
517 E Monomonee St. MILWAUKEE WI 53202  
Kindness Architecture and Planning  
414.763.3673

Civil Engineer  
**N** Norris and Associates  
414.365.5314

Civil Engineer  
**R.A. Smith National, Inc.**  
Beyond Surveying and Engineering  
R.A. Smith National  
262.317.3232

Landscape Architect  
**SAA**  
Schreiber Anderson Associates  
608.441.3582

Issue  
No.                      Date

Revisions  
No.                      Date

Single Family  
Sample 3  
Elevations  
Family Style 3

Date  
10-01-2010

Principal In Charge  
M.A.

Project Planner  
J.L.

Project Architect  
M.A.

Project Manager  
W.F.

Drawn  
J.L., A.K., G.M., B.T.

Job No.  
08265.01

Scale  
As indicated

Drawing No.  
**A104**

DPD SUBMISSION

WESTLAWN REDEVELOPMENT

TORTI GALLAS AND PARTNERS, INC.

**WESTLAWN REDEVELOPMENT**

6331 W Silver Spring Dr  
Milwaukee, WI 53218

**Torti Gallas and Partners, Inc.**  
1300 Spring Street,  
4th Floor  
Silver Spring, MD 20910  
301.588.4800  
www.tortigallas.com

Owner  
**Housing Authority of the City of Milwaukee**  
414.286.3629

Local Architect  
**KINDNESS**  
architecture + planning  
517 e monomonee st. MILWAUKEE WI 53202  
Kindness Architecture and Planning  
414.763.3673

Civil Engineer  
**N** Norris and Associates  
414.365.5314

Civil Engineer  
**R.A. Smith National, Inc.**  
Beyond Surveying and Engineering  
R.A. Smith National  
262.317.3232

Landscape Architect  
**SAA**  
Schreiber Anderson Associates  
608.441.3582

Issue  
No.                      Date

Revisions  
No.                      Date

**Single Family Sample 4 Elevations Family Style 2**

Date  
10-01-10  
Principal In Charge  
M.A.  
Project Planner  
J.L.  
Project Architect  
M.A.  
Project Manager  
W.F.  
Drawn  
J.L., A.K., G.M., B.T.

Job No.  
08265.01  
Scale  
As indicated

Drawing No.  
**A105**

WESTLAWN REDEVELOPMENT

TORTI GALLAS AND PARTNERS, INC.



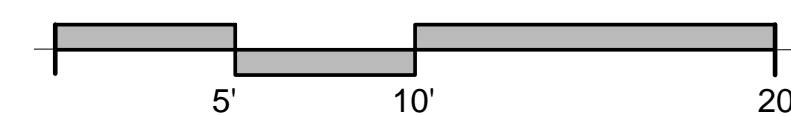
**RIGHT ELEVATION**



**REAR ELEVATION**

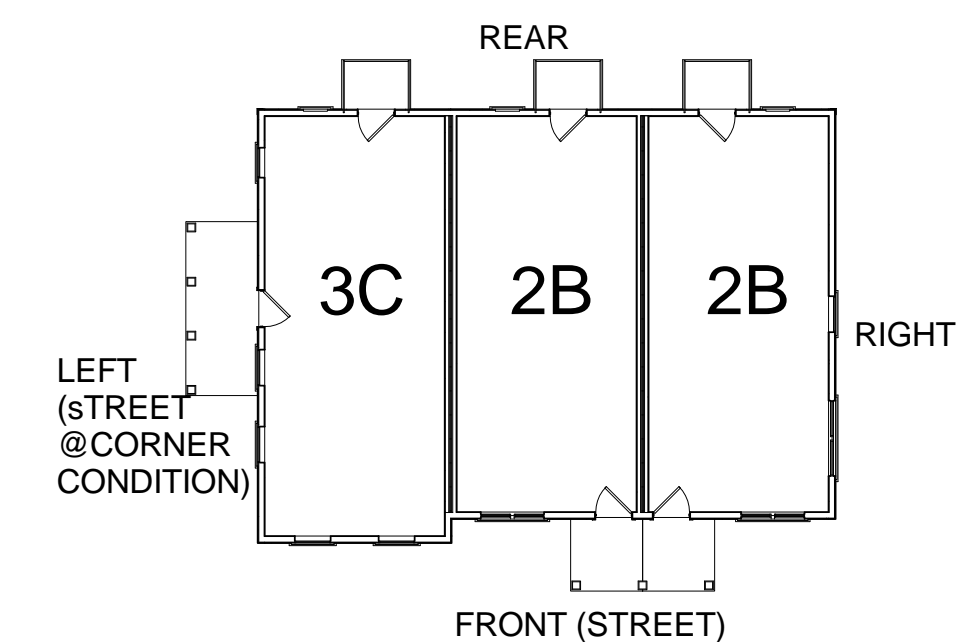


**LEFT (STREET AT CORNER CONDITION)**



**FRONT (STREET) ELEVATION**

- Building Materials**
- Cementitious siding and panels
  - Vinyl windows and doors
  - Precast concrete
  - Metal or wood railing at balconies
  - Asphalt shingles
  - Metal roofing
  - Pre manufactured Trim and Columns



**KEY PLAN**

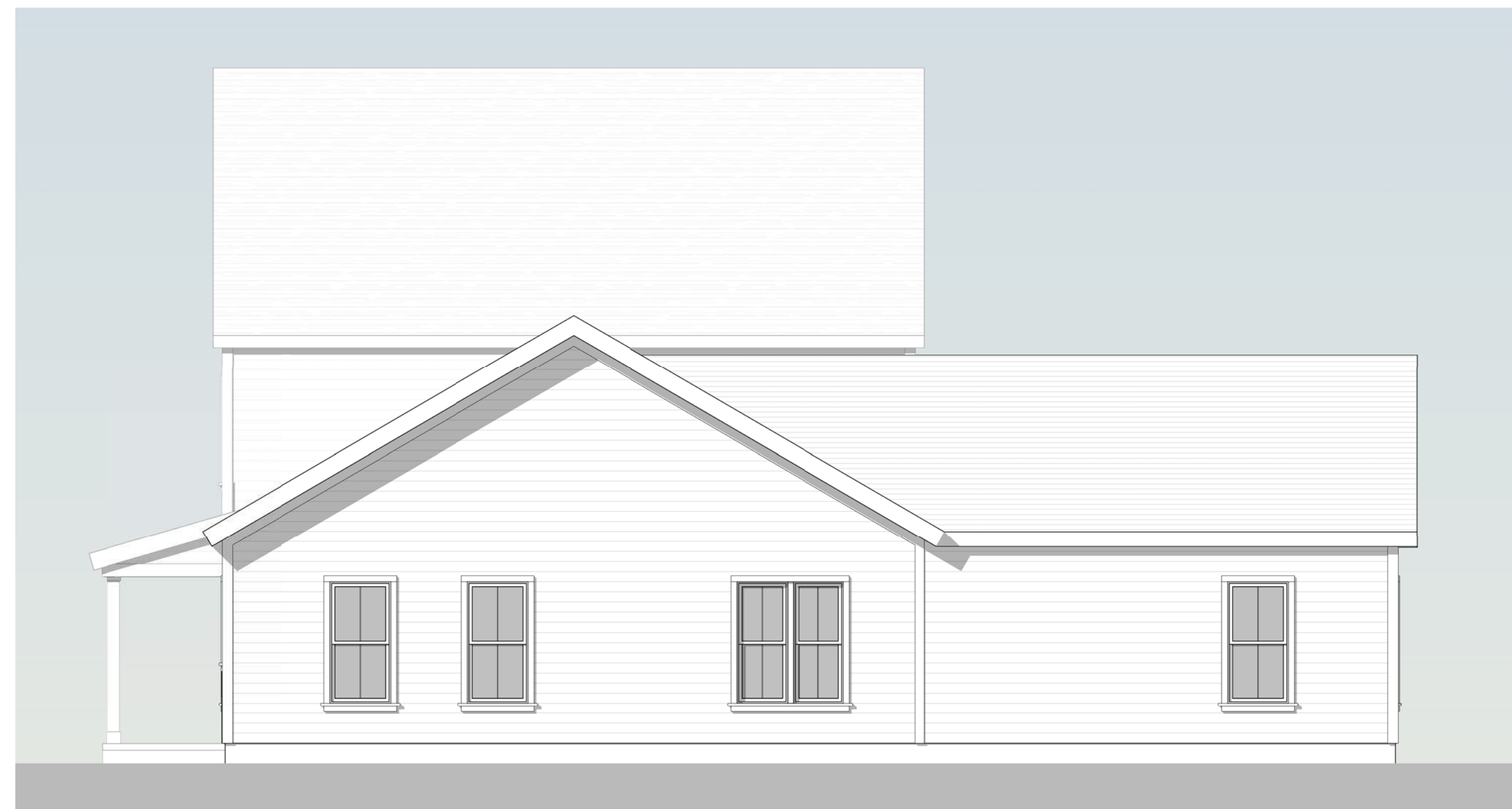
DPD SUBMISSION



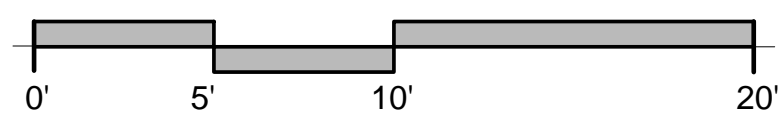
LEFT ELEVATION



REAR ELEVATION



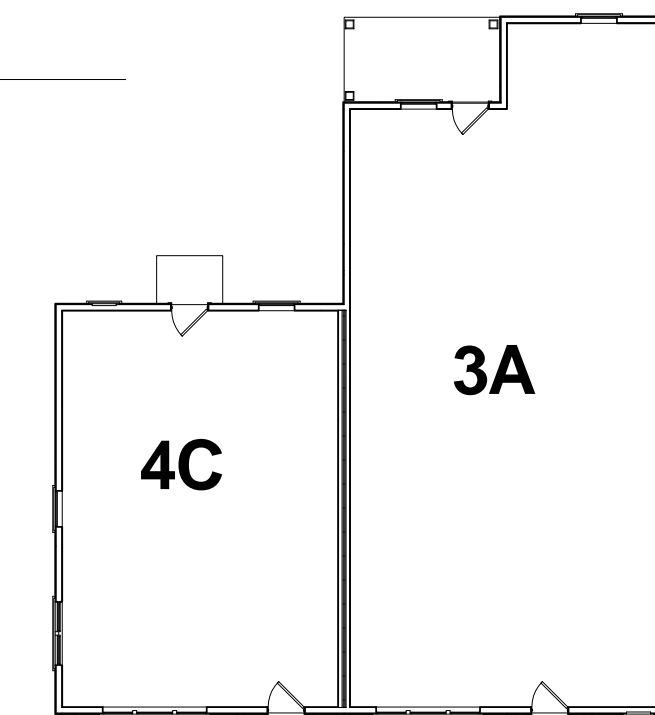
RIGHT ELEVATION



FRONT ELEVATION

**Building Materials**

- Cementitious siding and panels
- Vinyl windows and doors
- Precast concrete
- Metal or wood railing at balconies
- Asphalt shingles
- Metal roofing
- Pre manufactured Trim and Columns



KEY PLAN

**WESTLAWN REDEVELOPMENT**

6331 W Silver Spring Dr  
Milwaukee, WI 53218

**Torti Gallas and Partners, Inc.**  
1300 Spring Street,  
4th Floor  
Silver Spring, MD 20910  
301.588.4800  
www.tortigallas.com

Owner  
**Housing Authority of the City of Milwaukee**  
414.286.3629

Local Architect  
**KINDNESS**  
architecture + planning  
517 e meadowood st. MILWAUKEE WI 53202  
Kindness Architecture and Planning  
414.763.3673

Civil Engineer  
**N** Norris and Associates  
414.365.5314

Civil Engineer  
**R.A. Smith National, Inc.**  
*Beyond Surveying and Engineering*  
R.A. Smith National  
262.317.3232

Landscape Architect  
**SAA**  
Schreiber Anderson Associates  
608.441.3582

Issue  
No.                      Date

Revisions  
No.                      Date

Single Family  
Sample 5  
Elevations  
Family Style 2

Date  
10-01-2010

Principal In Charge  
M.A.

Project Planner  
J.L.

Project Architect  
M.A.

Project Manager  
W.F.

Drawn  
J.L., A.K., G.M., B.T.

Job No.  
08265.01

Scale  
As indicated

Drawing No.

**A106**

DPD SUBMISSION

WESTLAWN REDEVELOPMENT

TORTI GALLAS AND PARTNERS, INC.

**WESTLAWN  
REDEVELOP-  
MENT**

6331 W Silver Spring Dr  
Milwaukee, WI 53218

**Torti Gallas and  
Partners, Inc.**  
1300 Spring Street,  
4th Floor  
Silver Spring, MD 20910  
301.588.4800  
www.tortigallas.com

Owner  
**Housing Authority of  
the City of Milwaukee**  
414.286.3629

Local Architect  
**KINDNESS**  
architecture + planning  
617 • monomonee st. MILWAUKEE WI 53202  
Kindness Architecture and  
Planning  
414.763.3673

Civil Engineer  
**N** Norris and Associates  
414.365.5314

Civil Engineer  
**R.A. Smith National, Inc.**  
*Beyond Surveying  
and Engineering*  
R.A. Smith National  
262.317.3232

Landscape Architect  
**SAA**  
Schreiber Anderson Associates  
608.441.3582

Issue  
No. Date

Revisions  
No. Date

Single Family  
Sample 6  
Elevations  
Family Style 3

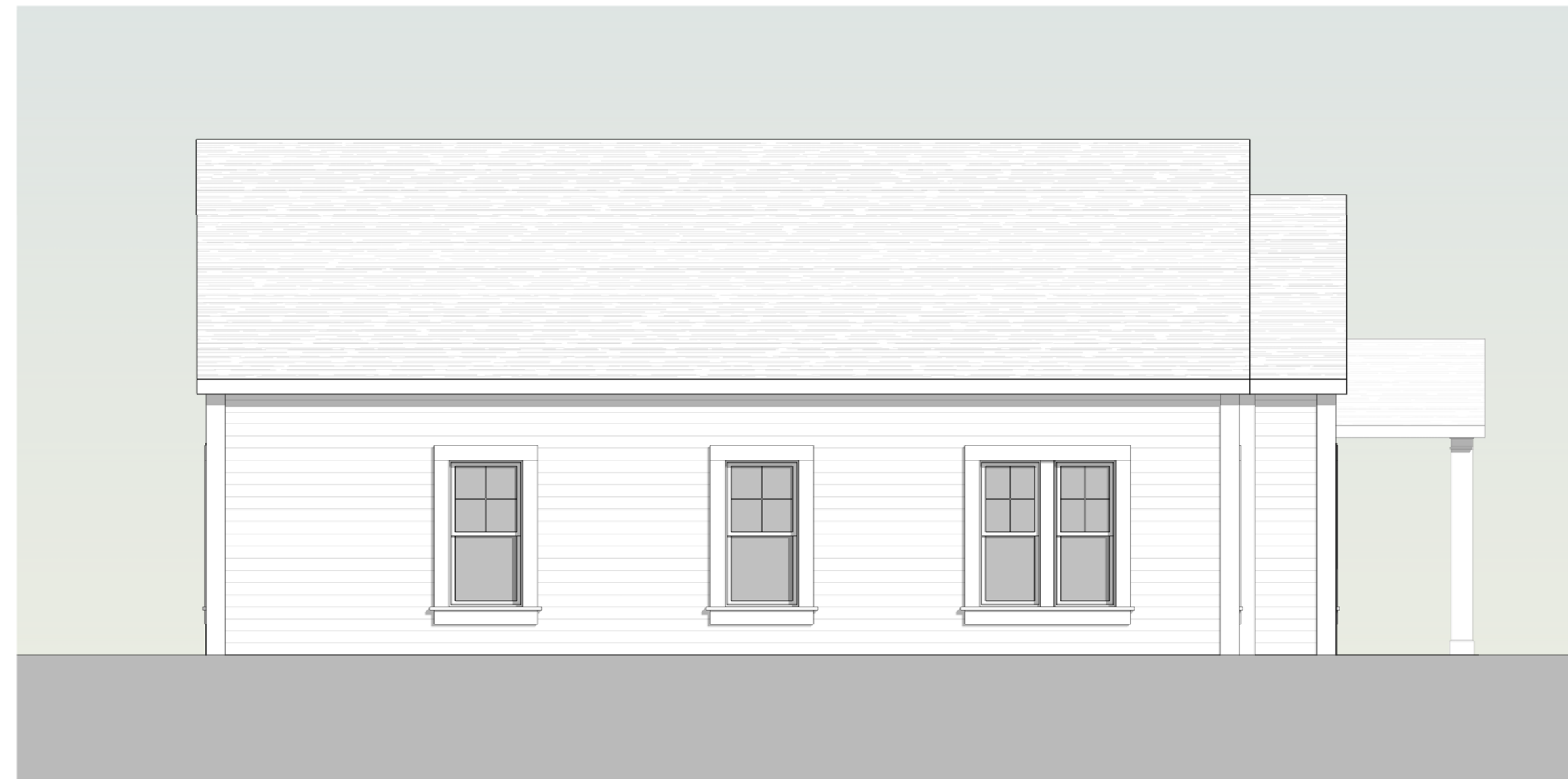
Date  
10-01-2010  
Principal In Charge  
M.A.  
Project Planner  
J.L.  
Project Architect  
M.A.  
Project Manager  
W.F.  
Drawn  
J.L., A.K., G.M., B.T.

Job No.  
08265.01  
Scale  
As indicated

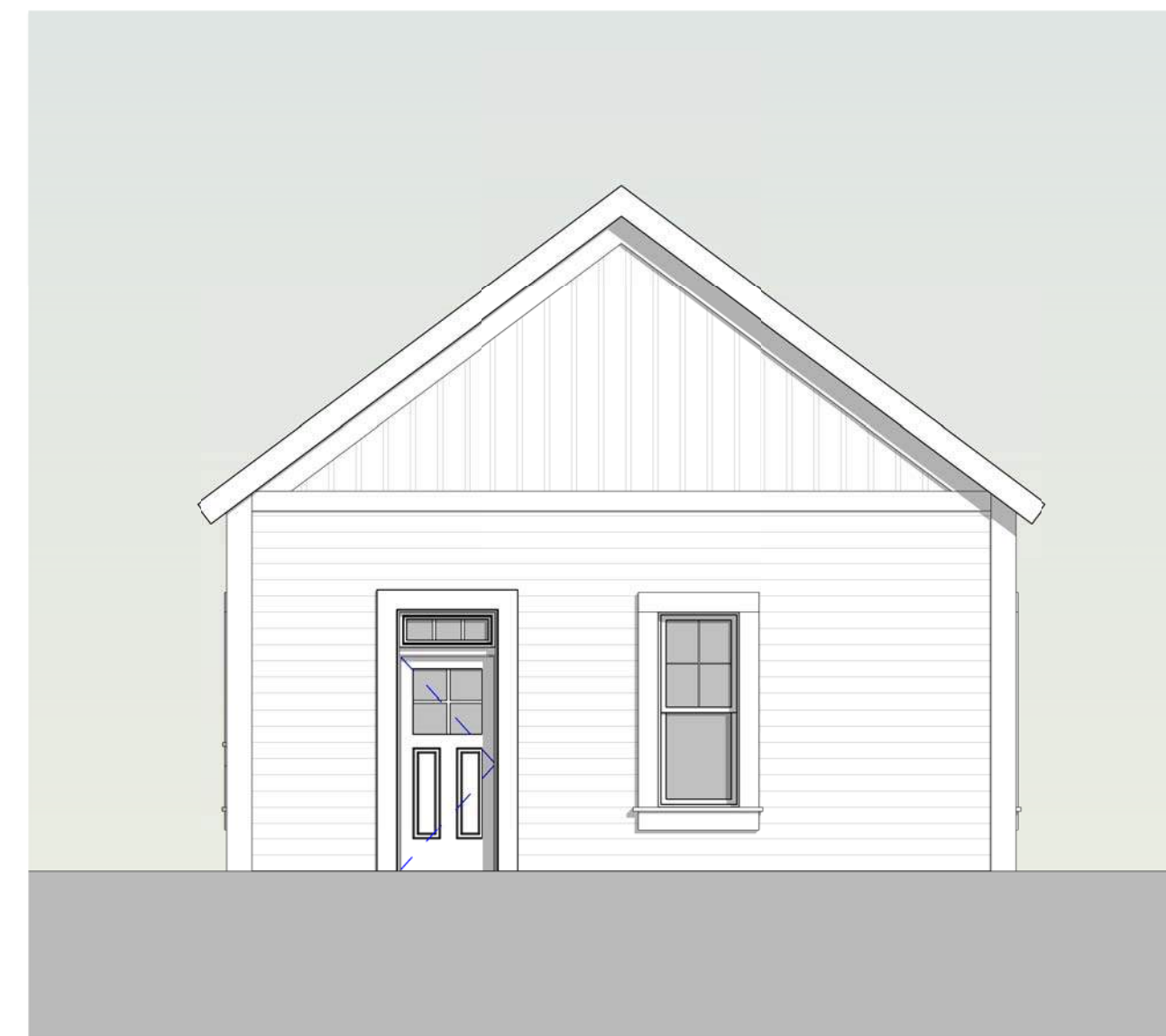
Drawing No.  
**A107**

WESTLAWN REDEVELOPMENT

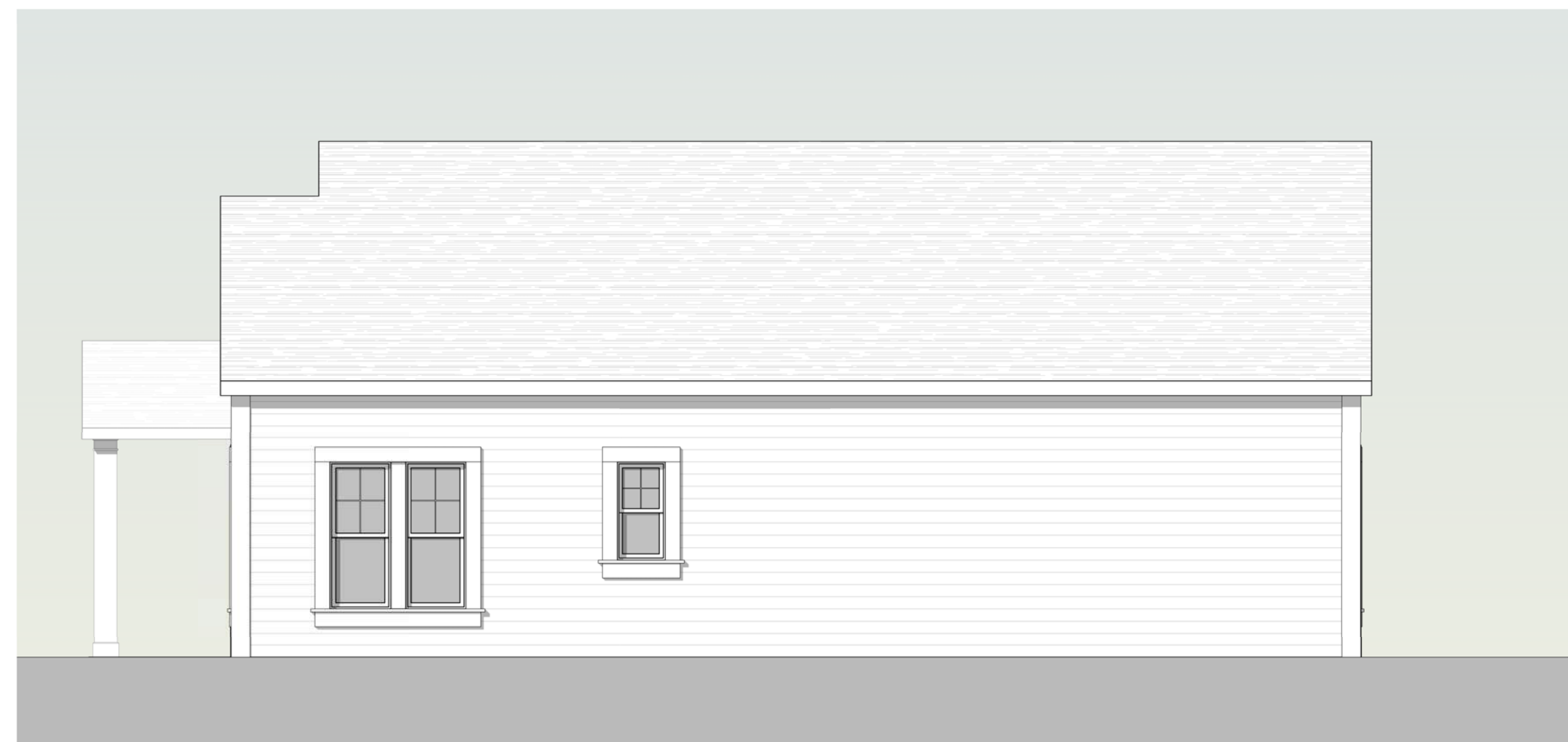
TORTI GALLAS AND PARTNERS, INC.



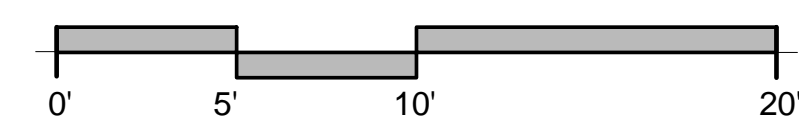
**LEFT ELEVATION**



**REAR ELEVATION**



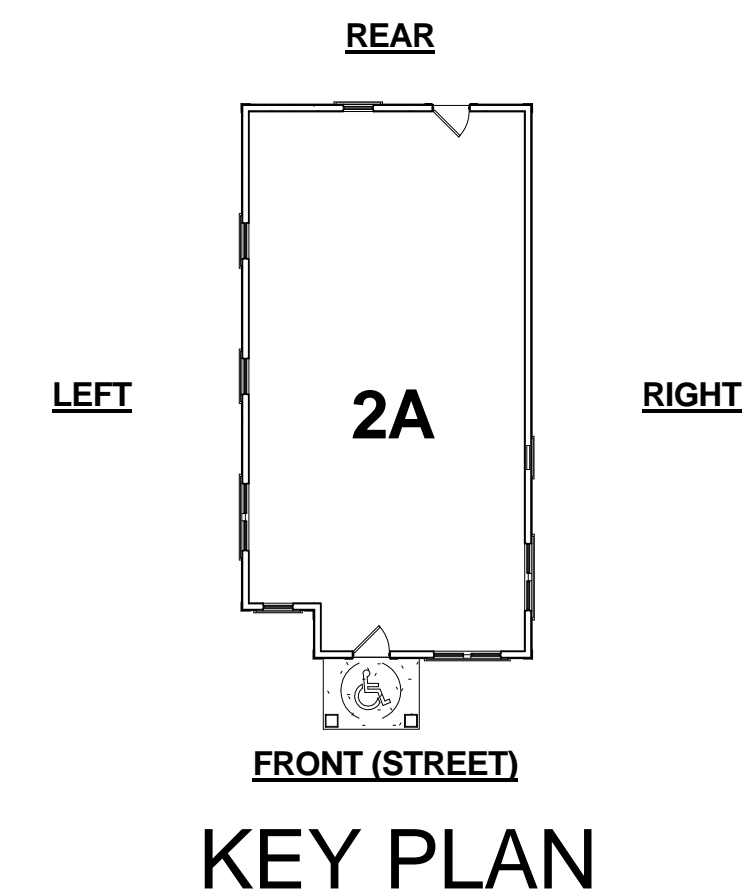
**RIGHT ELEVATION**



- Building Materials**
- Cementitious siding and panels
  - Vinyl windows and doors
  - Precast concrete
  - Metal or wood railing at balconies
  - Asphalt shingles
  - Metal roofing
  - Pre-manufactured Trim and Columns



**FRONT ELEVATION**



**KEY PLAN**

DPD SUBMISSION



NORTH ELEVATION

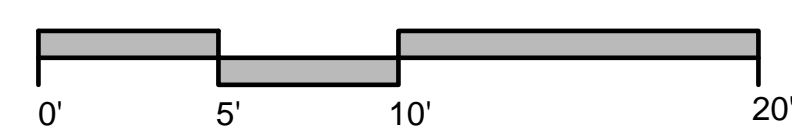


EAST ELEVATION

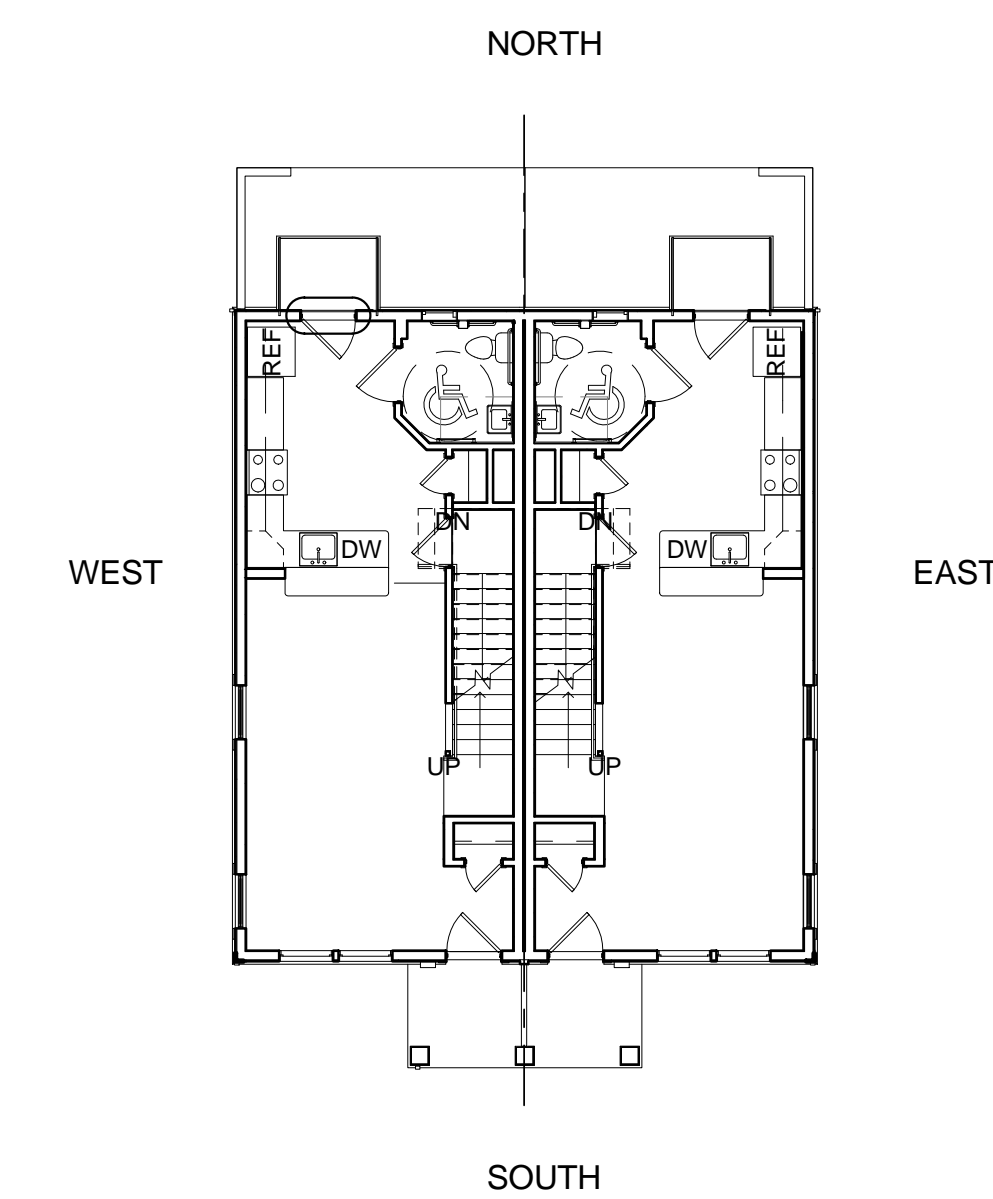
MATERIAL LEGEND	
NUMBER	MATERIAL
6.4	EXTERIOR COMPOSITE WRAPPED PT WD COLUMN
6.5	EXTERIOR COMPOSITE TRIM
6.8	WOOD BRACKET
6.11	EXPOSED RAFTER TAIL
7.1	ARCHITECTURAL GRADE ASPHALT SHINGLES
7.9	BOARD AND BATTEN CEMENTITIOUS SIDING
7.12	STANDING SEAM METAL ROOF
7.14	FIBER CEMENT LAP SIDING
8.1	FIBERGLASS WINDOW
8.2	PAINTED FIBERGLASS ENTRY DOOR



SOUTH ELEVATION



WEST ELEVATION



KEY PLAN



**WESTLAWN REDEVELOPMENT**

6331 W Silver Spring Dr  
Milwaukee, WI 53218

**Torti Gallas and Partners, Inc.**  
1300 Spring Street,  
4th Floor  
Silver Spring, MD 20910  
301.588.4800  
www.tortigallas.com

Owner  
**Housing Authority of the City of Milwaukee**  
414.286.3629

Local Architect  
**KINDNESS**  
architecture + planning  
517 e monomonee st. MILWAUKEE WI 53202  
Kindness Architecture and Planning  
414.763.3673

Civil Engineer  
**N** Norris and Associates  
414.365.5314

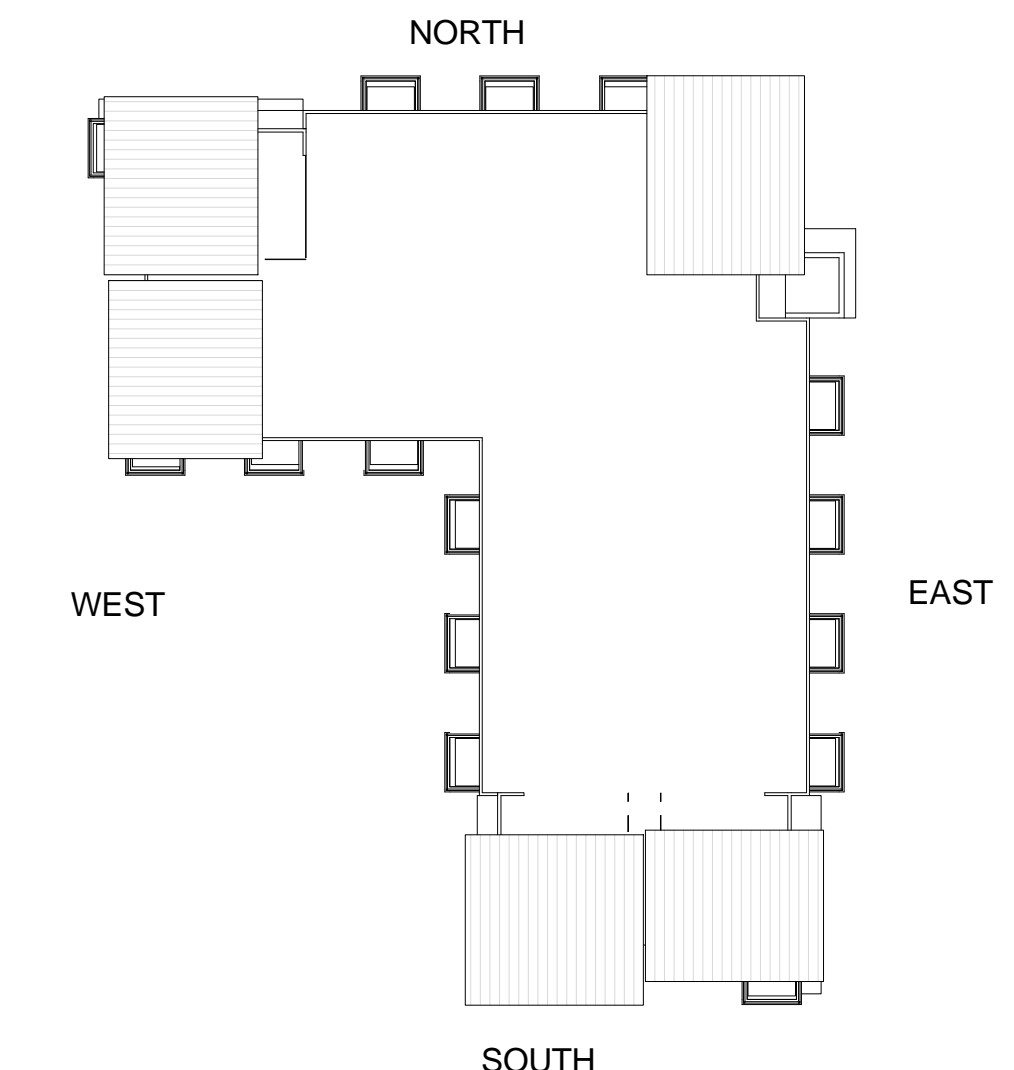
Civil Engineer  
**R.A. Smith National, Inc.**  
Beyond Surveying and Engineering  
R.A. Smith National  
262.317.3232

Landscape Architect  
**SAA**  
Schreiber Anderson Associates  
608.441.3582

- Building Materials**
- Face brick: modular, standard or utility
  - Cementitious siding and panels
  - Metal panel
  - Vinyl windows and doors
  - Aluminum storefront
  - Precast concrete
  - Decorative concrete masonry units
  - Spandrel panel
  - Metal or wood railing at balconies
  - Asphalt shingles
  - Metal roofing



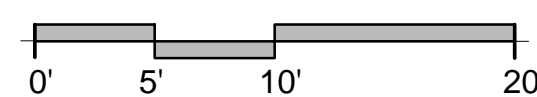
**NORTH ELEVATION**



**KEY PLAN**



**EAST ELEVATION**



**Issue**  
No.                      Date

**Revisions**  
No.                      Date

**Multi-Family Sample 1 Elevations**

Date  
10-01-2010  
Principal In Charge  
M.A.  
Project Planner  
J.L.  
Project Architect  
M.A.  
Project Manager  
W.F.  
Drawn  
J.L., A.K., G.M., B.T.

Job No.  
08265.01  
Scale  
As indicated

Drawing No.  
**A109**

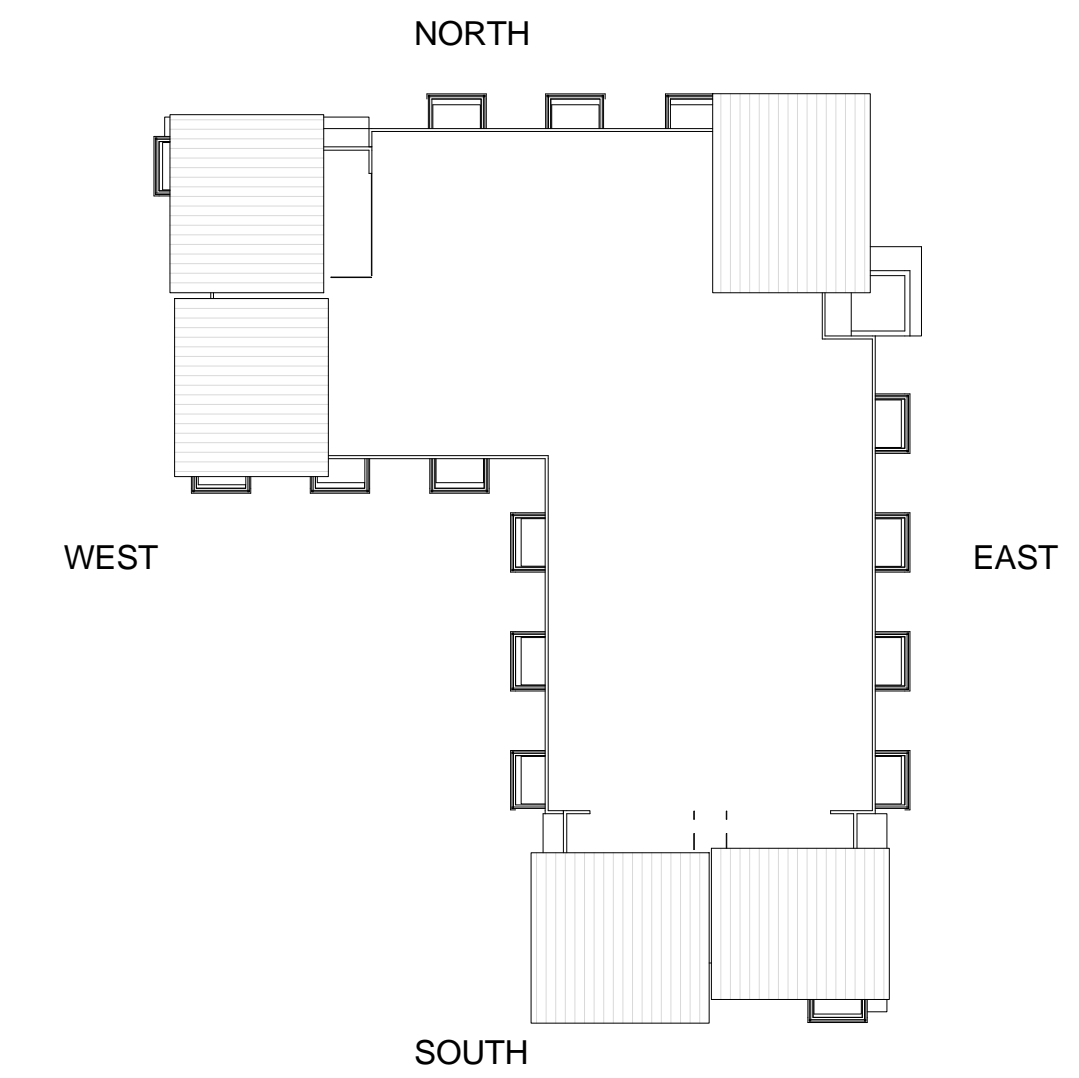
DPD Submission

WESTLAWN REDEVELOPMENT

TORTI GALLAS AND PARTNERS, INC.



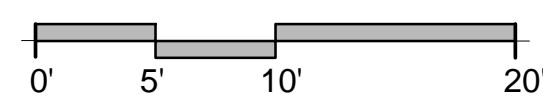
SOUTH ELEVATION



ELEVATION KEY PLAN



WEST ELEVATION



**WESTLAWN REDEVELOPMENT**

6331 W Silver Spring Dr  
Milwaukee, WI 53218

**Torti Gallas and Partners, Inc.**  
1300 Spring Street,  
4th Floor  
Silver Spring, MD 20910  
301.588.4800  
www.tortigallas.com

Owner  
**Housing Authority of the City of Milwaukee**  
414.286.3629

Local Architect  
**KINDNESS**  
architecture + planning  
517 s monomonee st. MILWAUKEE WI 53202  
Kindness Architecture and Planning  
414.763.3673

Civil Engineer  
**N** Norris and Associates  
414.365.5314

Civil Engineer  
**R.A. Smith National, Inc.**  
Beyond Surveying and Engineering  
R.A. Smith National  
262.317.3232

Landscape Architect  
**SAA**  
Schreiber Anderson Associates  
608.441.3582

Issue  
No.                      Date

Revisions  
No.                      Date

**Multi-Family Sample 1 Elevations**

Date  
10-01-2010  
Principal In Charge  
M.A.  
Project Planner  
J.L.  
Project Architect  
M.A.  
Project Manager  
W.F.  
Drawn  
J.L., A.K., G.M., B.T.

Job No.  
08265.01  
Scale  
As indicated

Drawing No.  
**A110**

DPD Submission

WESTLAWN REDEVELOPMENT

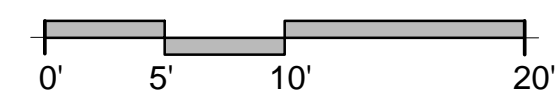
TORTI GALLAS AND PARTNERS, INC.



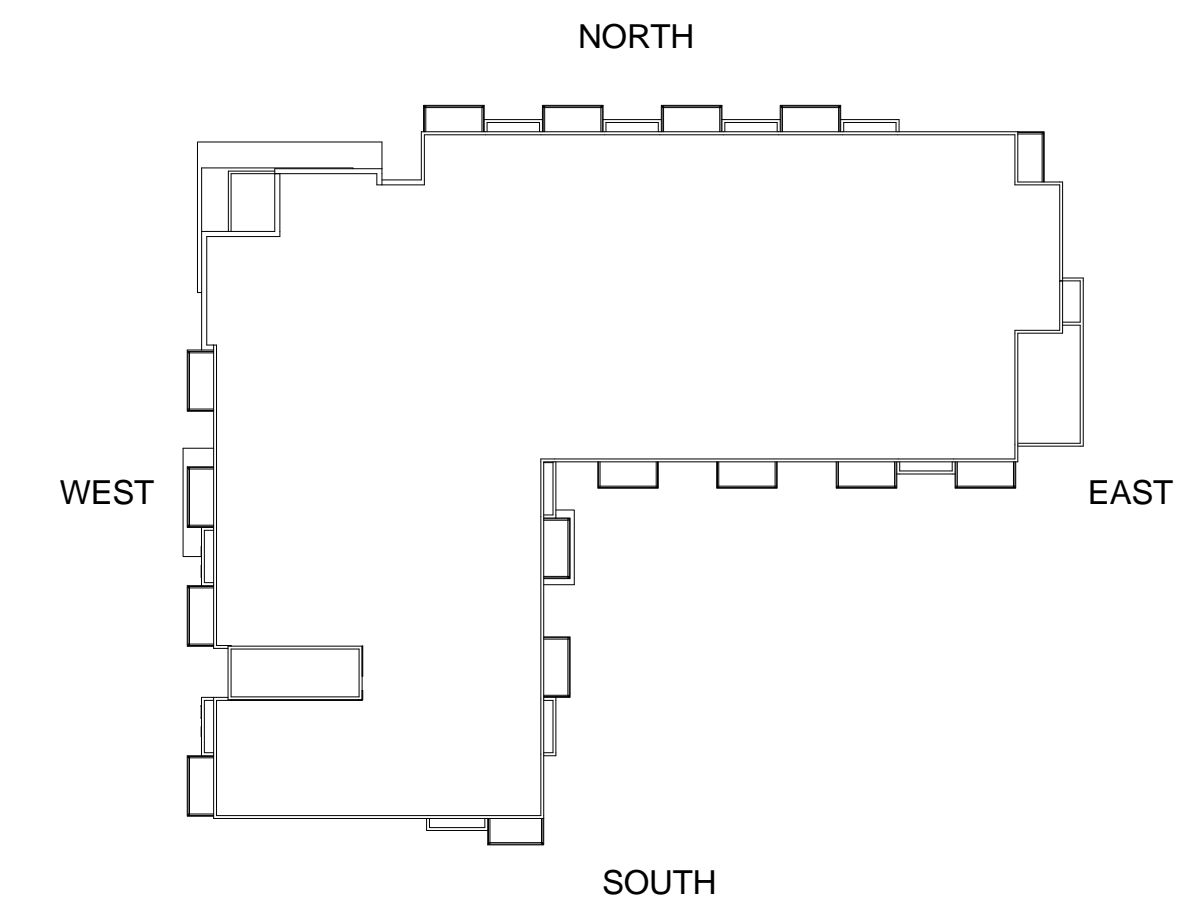
**NORTH ELEVATION**



**EAST ELEVATION**



- Building Materials**
- Face brick: modular, standard or utility
  - Cementitious siding and panels
  - Metal panel
  - Vinyl windows and doors
  - Aluminum storefront
  - Precast concrete
  - Decorative concrete masonry units
  - Spandrel panel
  - Metal or wood railing at balconies
  - Asphalt shingles
  - Metal roofing



**KEY PLAN**

**WESTLAWN REDEVELOPMENT**

6331 W Silver Spring Dr  
Milwaukee, WI 53218

**Torti Gallas and Partners, Inc.**  
1300 Spring Street,  
4th Floor  
Silver Spring, MD 20910  
301.588.4800  
www.tortigallas.com

Owner  
**Housing Authority of the City of Milwaukee**  
414.286.3629

Local Architect  
**KINDNESS**  
architecture + planning  
617 • monomonee st. MILWAUKEE WI 53202  
Kindness Architecture and Planning  
414.763.3673

Civil Engineer  
**N** Norris and Associates  
414.365.5314

Civil Engineer  
**R.A. Smith National, Inc.**  
*Beyond Surveying and Engineering*  
R.A. Smith National  
262.317.3232

Landscape Architect  
**SAA**  
Schreiber Anderson Associates  
608.441.3582

**Issue**

No.	Date

**Revisions**

No.	Date

**Multifamily Sample 2 Elevations**

Date  
10-01-2010

Principal In Charge  
M.A.

Project Planner  
J.L.

Project Architect  
M.A.

Project Manager  
W.F.

Drawn  
J.L., A.K., G.M., B.T.

Job No.  
08265.01

Scale  
As indicated

Drawing No.  
**A111**

DPD SUBMISSION

WESTLAWN REDEVELOPMENT

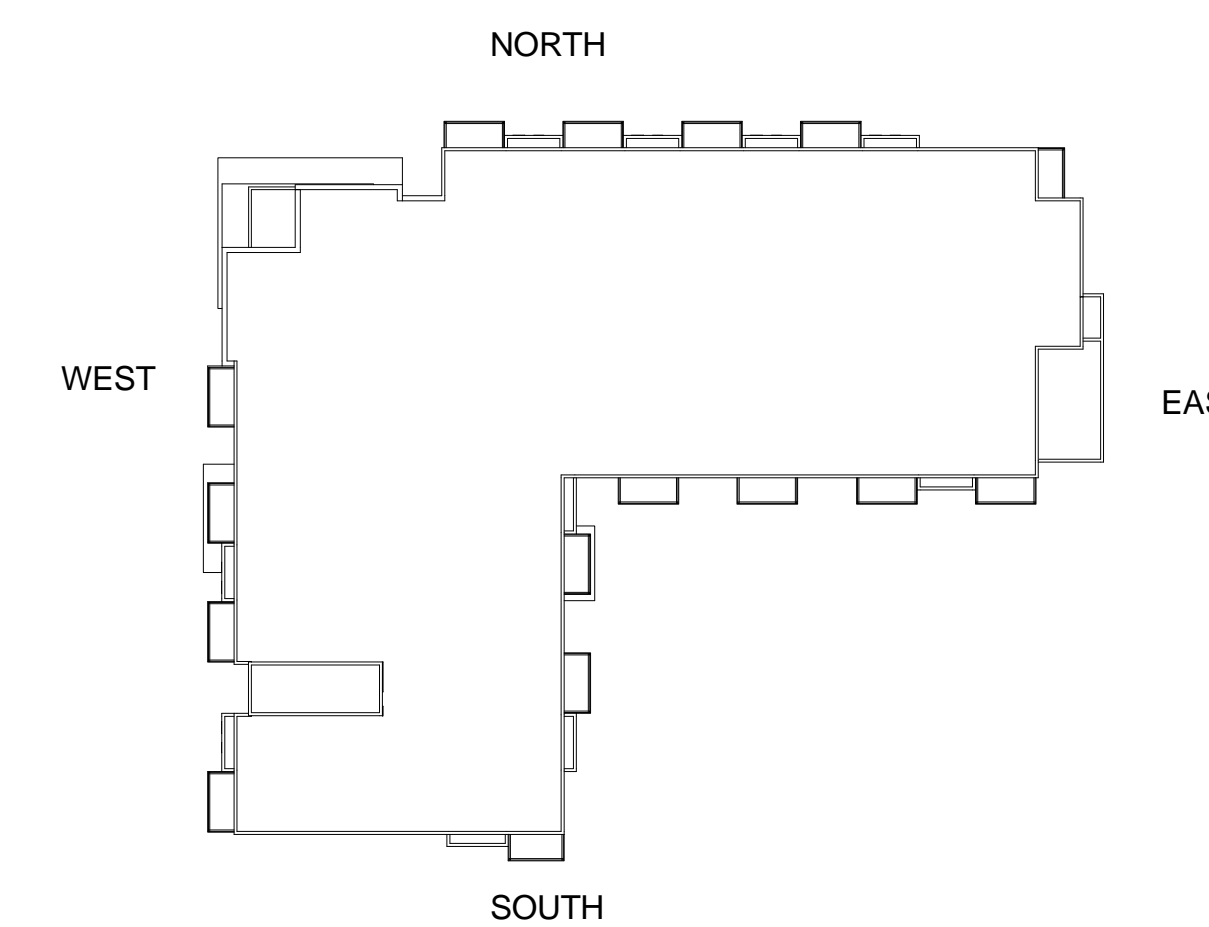
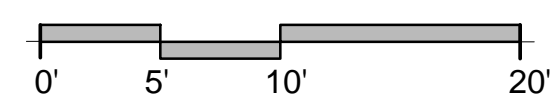
TORTI GALLAS AND PARTNERS, INC.



SOUTH ELEVATION



WEST ELEVATION



ELEVATION KEY PLAN

**WESTLAWN REDEVELOPMENT**

6331 W Silver Spring Dr  
Milwaukee, WI 53218

**Torti Gallas and Partners, Inc.**  
1300 Spring Street,  
4th Floor  
Silver Spring, MD 20910  
301.588.4800  
www.tortigallas.com

Owner  
**Housing Authority of the City of Milwaukee**  
414.286.3629

Local Architect  
**KINDNESS**  
architecture + planning  
617 • monomonee st. MILWAUKEE WI 53202  
Kindness Architecture and Planning  
414.763.3673

Civil Engineer  
**N** Norris and Associates  
414.365.5314

Civil Engineer  
**R.A. Smith National, Inc.**  
Beyond Surveying and Engineering  
R.A. Smith National  
262.317.3232

Landscape Architect  
**SAA**  
Schreiber Anderson Associates  
608.441.3582

Issue  
No.                      Date

Revisions  
No.                      Date

**Multifamily Sample 2 Elevations**

Date  
10-01-2010  
Principal In Charge  
M.A.  
Project Planner  
J.L.  
Project Architect  
M.A.  
Project Manager  
W.F.

Drawn  
J.L., A.K., G.M., B.T.

Job No.  
08265.01

Scale  
As indicated

Drawing No.  
**A112**

DPD SUBMISSION

WESTLAWN REDEVELOPMENT

TORTI GALLAS AND PARTNERS, INC.



NORTH ELEVATION



SOUTH ELEVATION

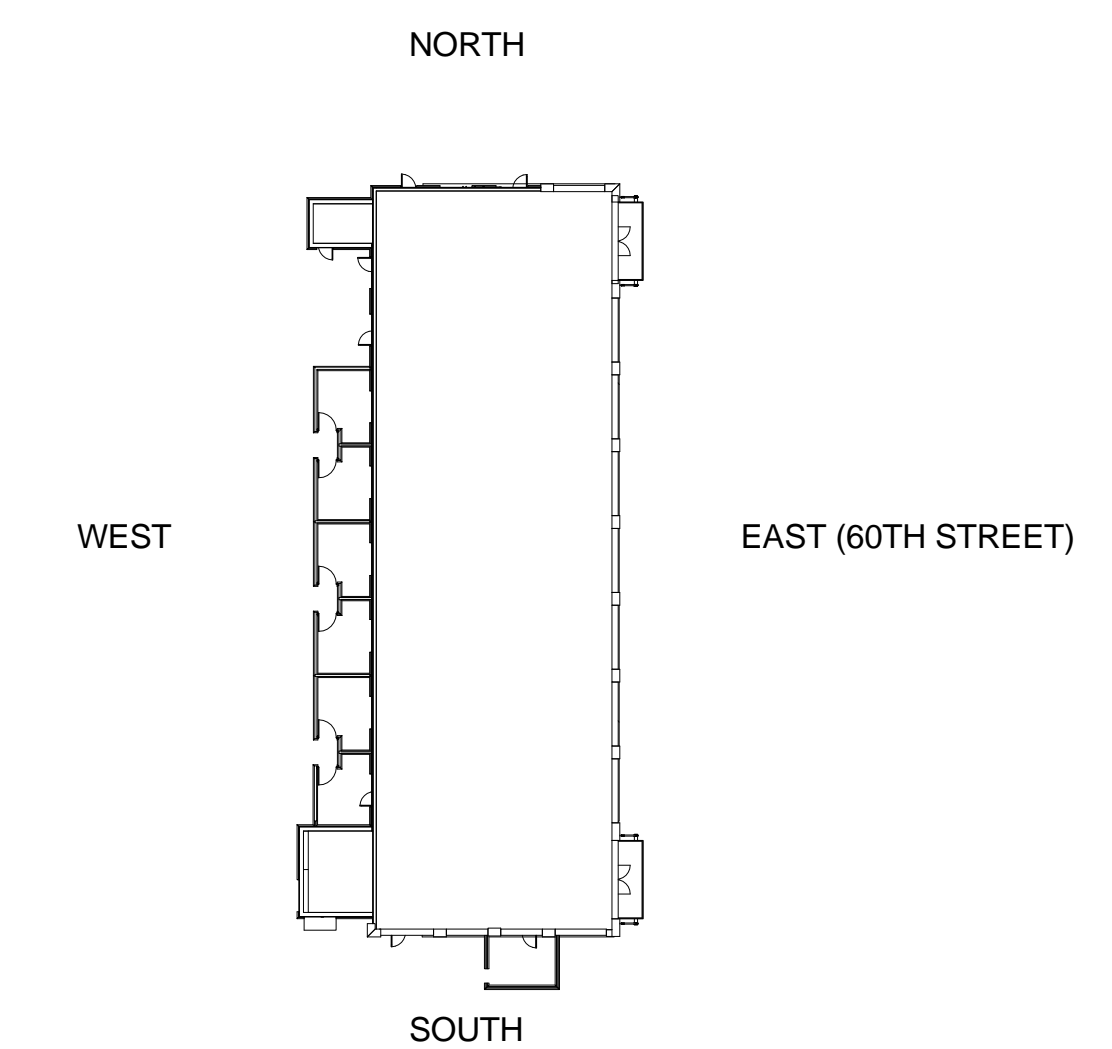
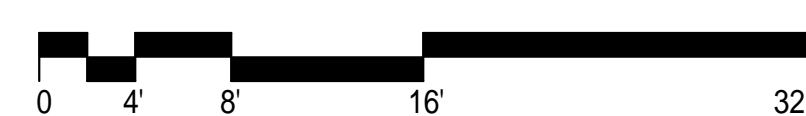


60TH STREET ELEVATION

MATERIAL LEGEND	
NUMBER	MATERIAL
4.4	PRECAST CONCRETE
4.5	BRICK
5.1	PREFABRICATED METAL BALCONY
5.3	METAL PANEL
5.5	METAL RAILING
7.9	BOARD AND BATTEN CEMENTITIOUS SIDING
7.14	FIBER CEMENT LAP SIDING
8.1	FIBERGLASS WINDOW
8.6	STOREFRONT WINDOW



WEST ELEVATION



KEY PLAN

Issue

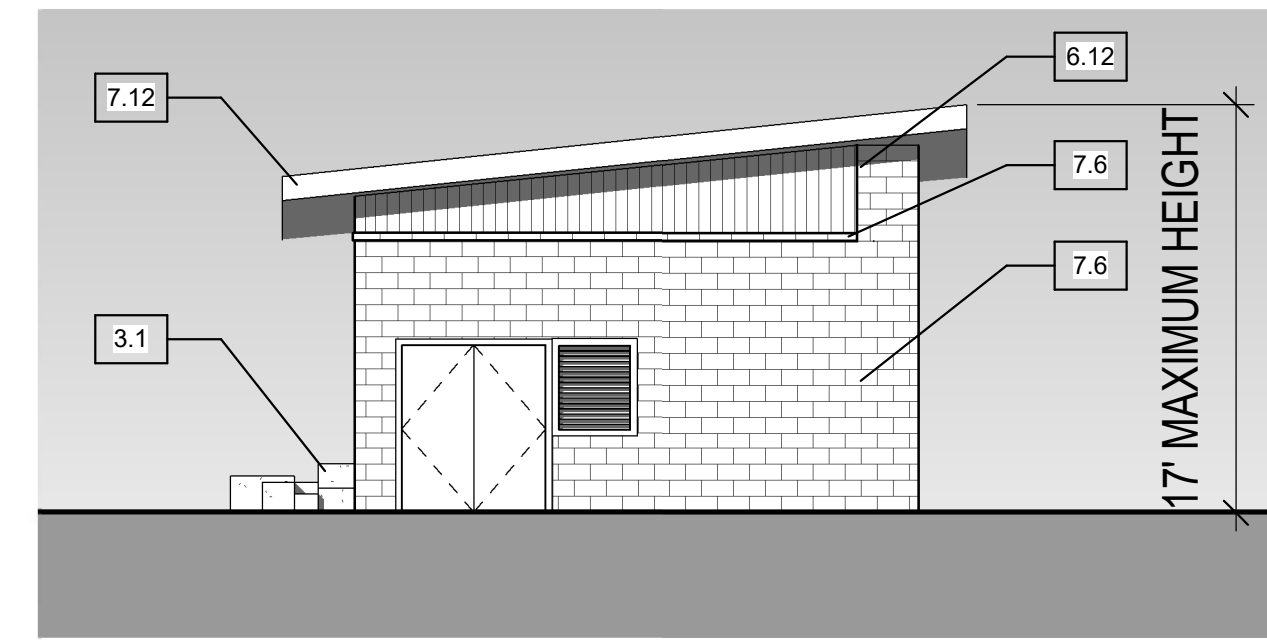
No.	Date

Revisions

No.	Date

Multi-Family Sample 3 Elevations

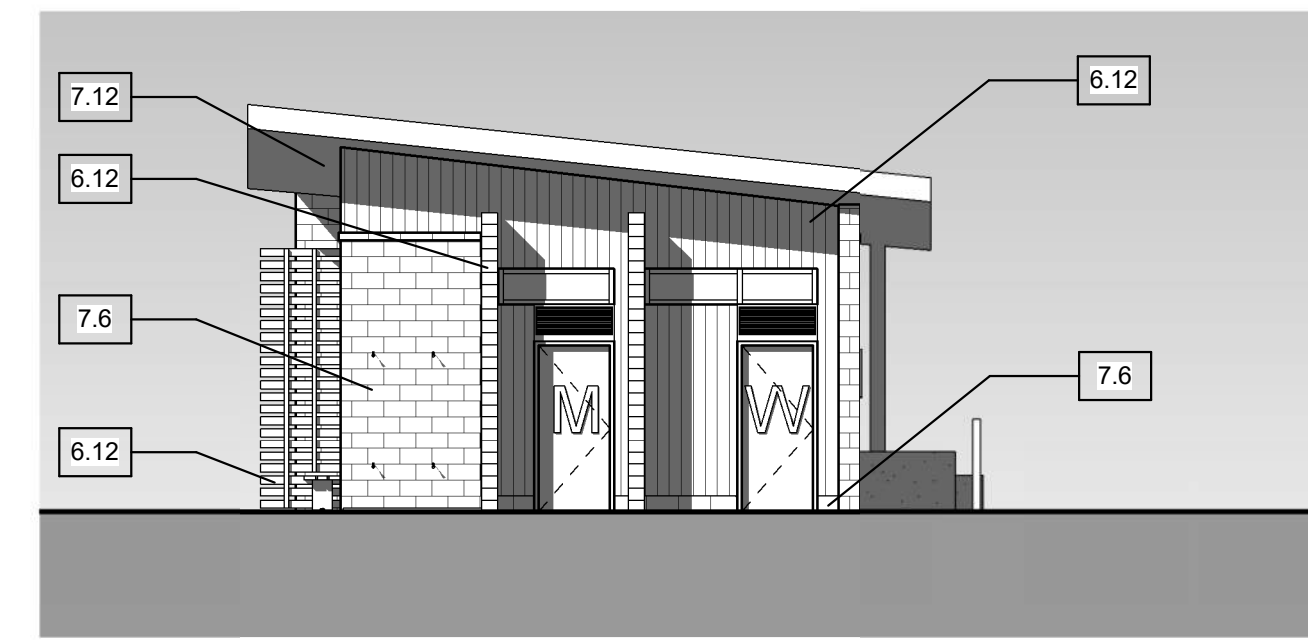
Date  
Issue Date  
Principal In Charge  
X.Y.  
Project Architect  
PA  
Approved  
APV  
Drawn  
Drawn  
Job No.  
Project Number  
Scale  
As indicated  
Drawing No.



**WEST ELEVATION**



**NORTH ELEVATION**

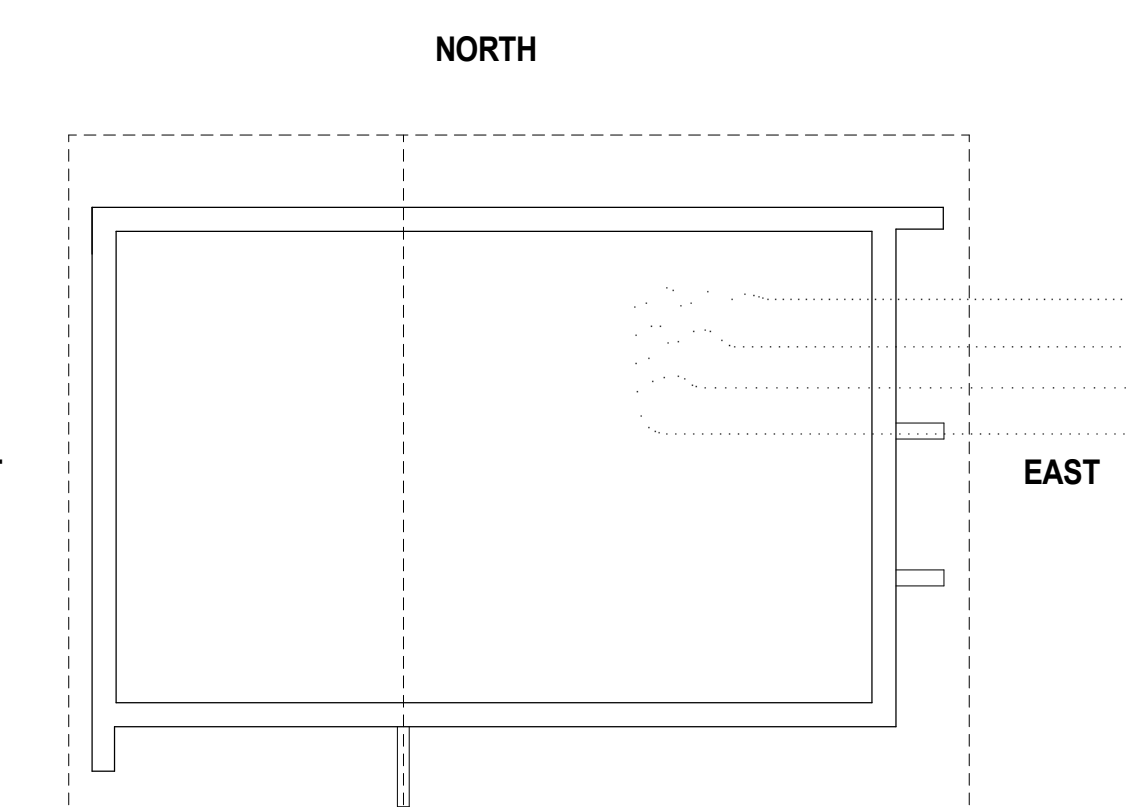


**EAST ELEVATION**



**SOUTH ELEVATION**

MATERIAL LEGEND	
NUMBER	MATERIAL
3.1	CONCRETE SLAB
5.3	METAL PANEL
6.12	WOOD SCREEN WALL
7.6	FIBER CEMENT LAP SIDING
7.12	STANDING SEAM METAL ROOF



**KEY PLAN**

DPD SUBMISSION

