



CUNNINGHAM GROUP

Cunningham Group Architecture, P.A.
St. Anthony Main
2011 Main St. SE
Suite 325
Minneapolis, MN 55414
Tel: 612.379.3400
Fax: 612.379.4400
www.cunningham.com

Consultant



Forest County Potawatomi Community



GREENFIRE MANAGEMENT SERVICES, LLC



Revisions

No.	Date	Description
2	04/04/13	Revision #2
3	04/18/13	Revision #3

Document Phase:	DD
Date:	03/27/2012
PIC / A/C:	JWC
Drawn By:	Author
Checked By:	Checker
Comm. No.:	1140033

Project Title
POTAWATOMI HOTEL PHASE 1

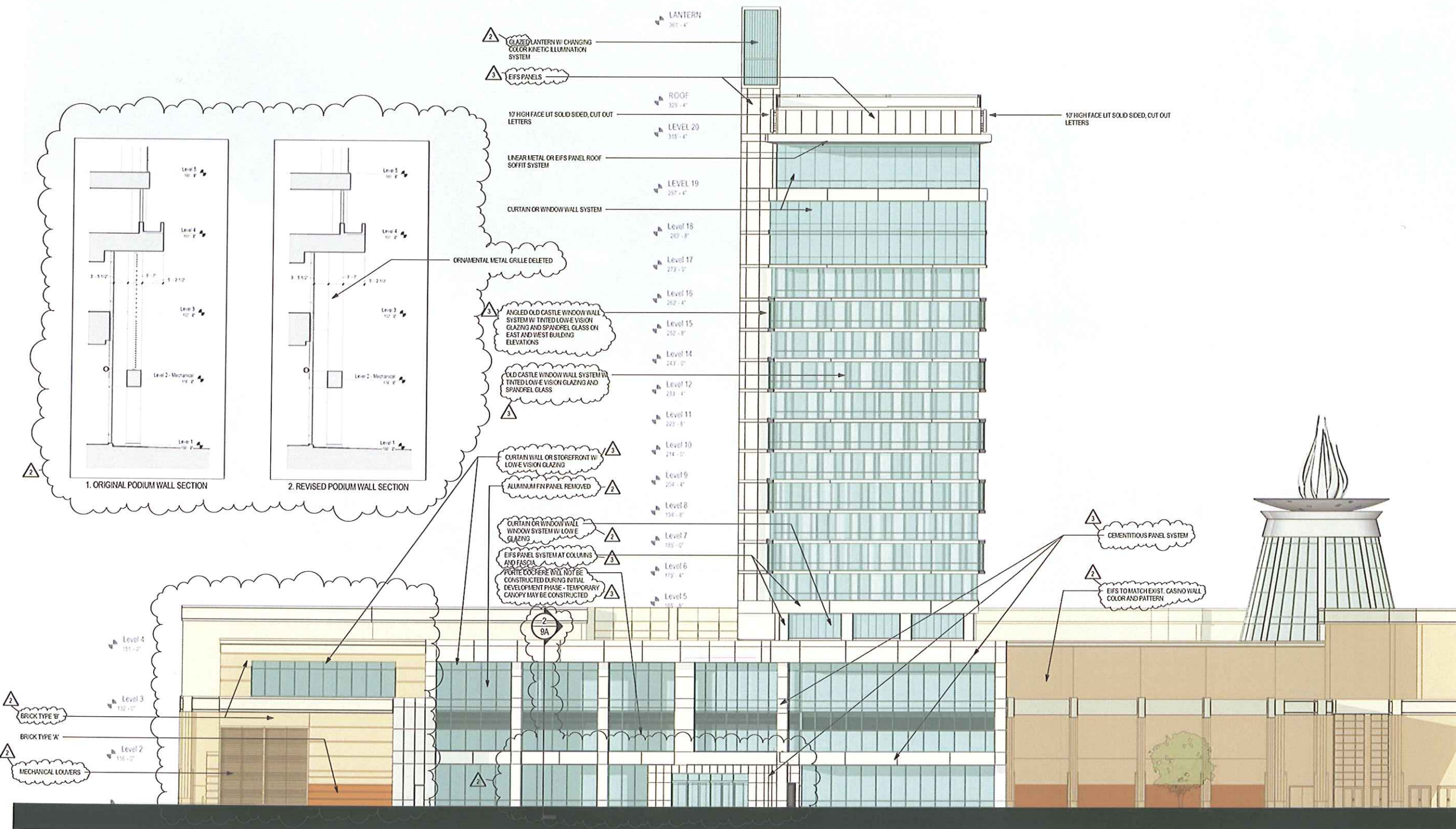
Sheet Title

Proposed North Building Elevation - Hotel

Sheet Number

DPD-9A

Copyright © 2012 Cunningham Group Architecture, P.A. All Rights Reserved.





**CUNNINGHAM
GROUP**

Cunningham Group
Architecture, P.A.
St. Anthony Main
201 Main St. SE
Suite 325
Minneapolis, IN
55414
Tel: 612 379 3400
Fax: 612 379 4400
www.cunningham.com

Consultant



Forest County
Potawatomi Community



Revisions

No.	Date	Description
2	04/04/13	Revision #2
3	04/18/13	Revision #3

Document Phase:	DD
Date:	03/27/2012
PIC / A/C:	JWC
Drawn By:	Author
Checked By:	Checker
Comm. No.:	11-0033

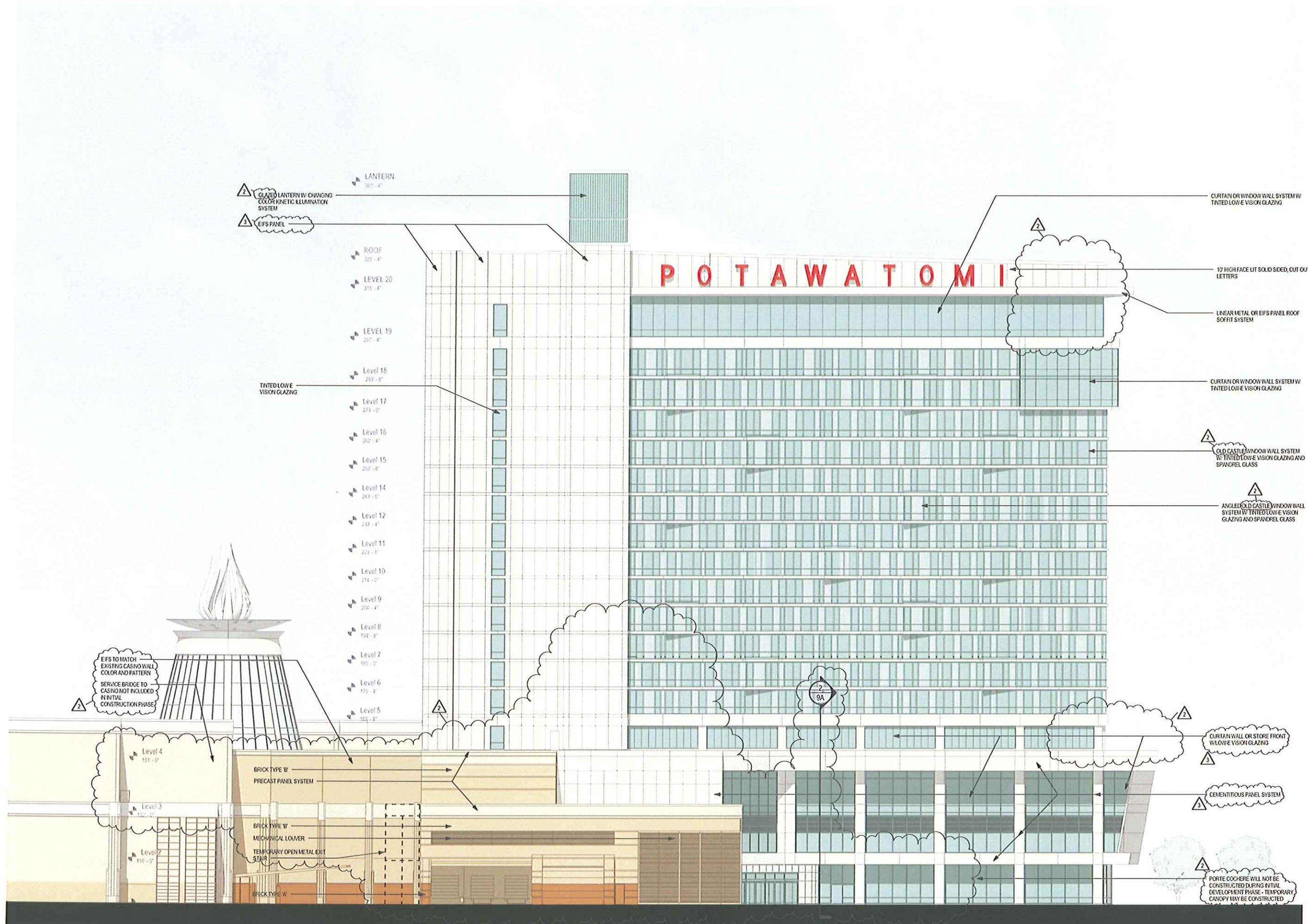
Project Title
**POTAWATOMI HOTEL
PHASE 1**

Sheet Title
**Proposed East Building
Elevation - Hotel**

Sheet Number

DPD-9B

Copyright © 2012 by Cunningham Group Architecture, P.A. All Rights Reserved.



- LANTERN
360'-4"
- ROOF
325'-4"
- LEVEL 20
315'-4"
- LEVEL 19
297'-4"
- LEVEL 18
283'-8"
- LEVEL 17
273'-0"
- LEVEL 16
262'-4"
- LEVEL 15
252'-8"
- LEVEL 14
243'-0"
- LEVEL 12
233'-4"
- LEVEL 11
223'-8"
- LEVEL 10
214'-0"
- LEVEL 9
204'-4"
- LEVEL 8
194'-8"
- LEVEL 7
185'-0"
- LEVEL 6
175'-4"
- LEVEL 5
165'-8"
- LEVEL 4
155'-0"
- LEVEL 3
142'-0"
- LEVEL 2
136'-0"

- CURTAIN OR WINDOW WALL SYSTEM W/ TINTED LOW-E VISION GLAZING
- 17' HIGH FACE LIT SOLID SIDED, CUT OUT LETTERS
- LINEAR METAL OR EFS PANEL ROOF SOFFIT SYSTEM
- CURTAIN OR WINDOW WALL SYSTEM W/ TINTED LOW-E VISION GLAZING
- OLD CASTLE WINDOW WALL SYSTEM W/ TINTED LOW-E VISION GLAZING AND SPANDREL GLASS
- ANGLED OLD CASTLE WINDOW WALL SYSTEM W/ TINTED LOW-E VISION GLAZING AND SPANDREL GLASS
- CURTAIN WALL OR STORE FRONT W/ LOW-E VISION GLAZING
- CEMENTITIOUS PANEL SYSTEM
- PORTE COCHERE WILL NOT BE CONSTRUCTED DURING INITIAL DEVELOPMENT PHASE - TEMPORARY CANOPY MAY BE CONSTRUCTED

EFS TO MATCH EXISTING CASINO WALL COLOR AND PATTERN

SERVICE BRIDGE TO CASINO NOT INCLUDED IN INITIAL CONSTRUCTION PHASE

BRICK TYPE B' PRECAST PANEL SYSTEM

BRICK TYPE B' MECHANICAL LOUVER

TEMPORARY OPEN METAL EXIT STAIR

BRICK TYPE A'



CUNNINGHAM GROUP

Cunningham Group
Architecture, P.A.
St. Anthony Main
201 Main St SE
Suite 305
Minneapolis, MN
55414
Tel: 612 379 3400
Fax: 612 379 4400
www.cunningham.com

Consultant



Forest County
Potawatomi Community



GREENFIRE
MANAGEMENT SERVICES, LLC
GRÆF

Revisions

No.	Date	Description
2	04/04/13	Revision #2

Document Phase:	DD
Date:	03/27/2012
PI/C / A/C:	JVC
Drawn By:	Author
Checked By:	Checker
Comm. No.:	11-0033

Project Title

POTAWATOMI HOTEL
PHASE 1

Sheet Title

Proposed South
Building Elevation -
Hotel

Sheet Number

DPD-9C

Copyright © 2012 by Cunningham Group Architecture P.A. All Rights Reserved.





**CUNNINGHAM
GROUP**

Cunningham Group
Architecture, P.A.
St. Anthony Main
201 Main St. SE
Suite 325
Minneapolis, MN
55414
Tel: 612.379.3400
Fax: 612.379.4100
www.cunningham.com

Consultant



Forest County
Potawatomi Community



GREENFIRE
MANAGEMENT SERVICES, LLC



Revisions

No.	Date	Description
2	04/04/13	Revision #2

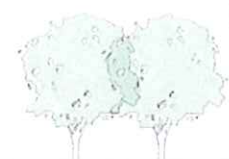
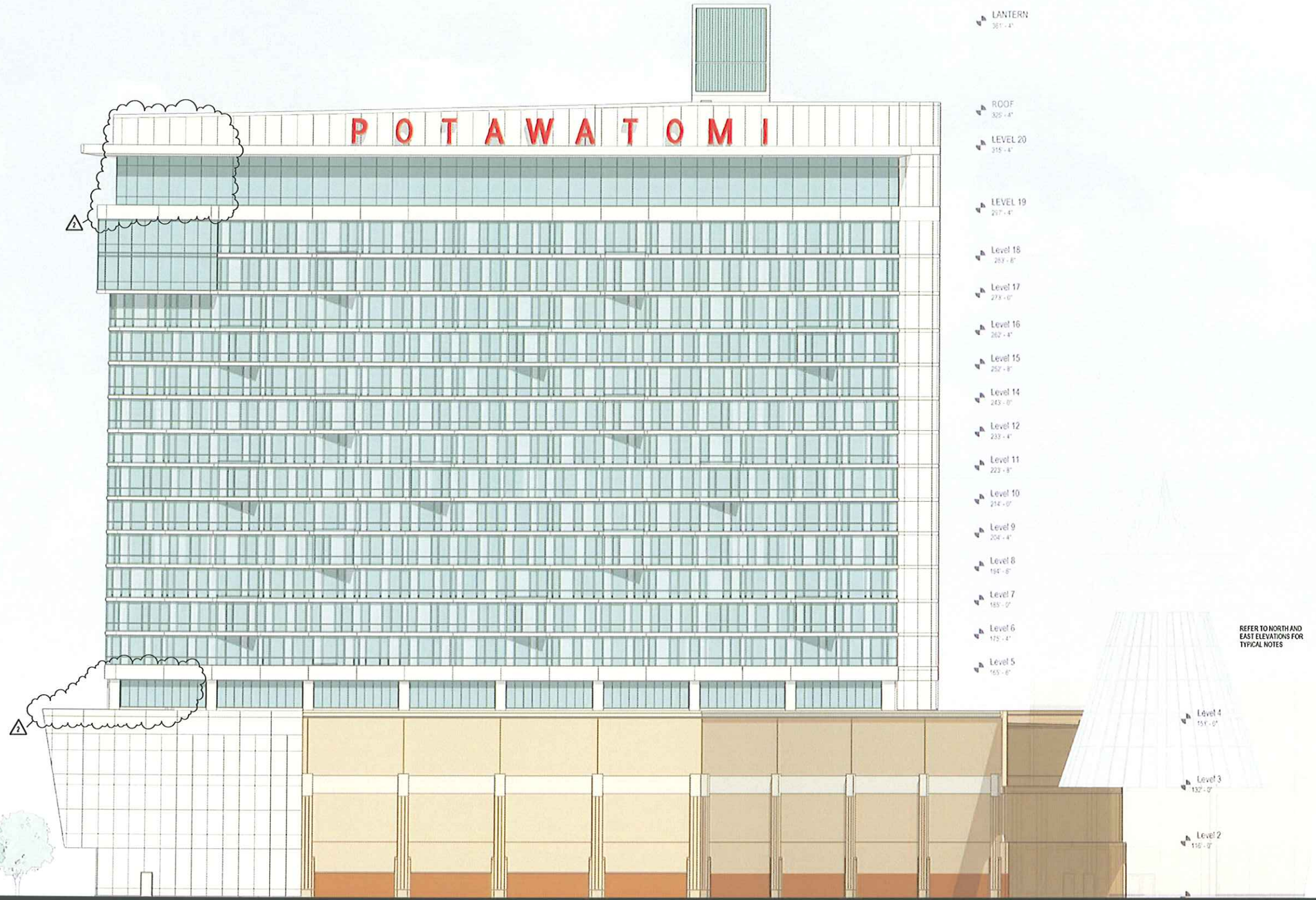
Document Phase	DO
Date	03/27/2012
PGC / A/C	JVC
Drawn By	Author
Checked By	Checker
Comm. No.:	11-0033

Project Title
**POTAWATOMI HOTEL
PHASE 1**

Sheet Title
**Proposed West Building
Elevation - Hotel**

Sheet Number
DPD-9D

Copyright © 2012 by Cunningham Group Architecture, P.A. All Rights Reserved.





**CUNNINGHAM
G R O U P**

Cunningham Group
Architecture, P.A.
St. Anthony Main
201 Main St. SE
Suite 325
Minneapolis, MN
55414
Tel: 612.379.3400
Fax: 612.379.4400
www.cunningham.com

Consultant



Forest County
Potawatomi Community



GREENFIRE
MANAGEMENT SERVICES, LLC



Revisions

No.	Date	Description
2	04/04/13	Revision #2

Document Phase:	DD
Date:	03/27/2012
Plc/A/C:	JWC
Drawn By:	Author
Checked By:	Checker
Comm. No.:	11-0033

Project Title
**POTAWATOMI HOTEL
PHASE 1**

Sheet Title
**Proposed Hotel
Perspective**

Sheet Number

DPD-9E