

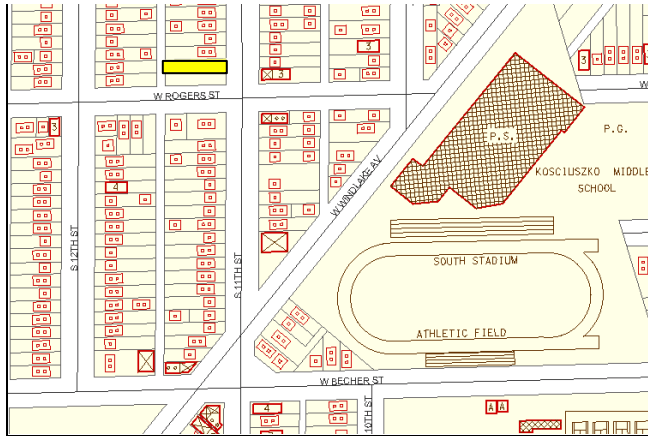
**LAND DISPOSITION REPORT
COMMON COUNCIL OF THE CITY OF MILWAUKEE**

RESPONSIBLE STAFF

Dan Casanova, Real Estate Section (286-5921)

Property

Vacant city-owned lots at 1977 South 11th Street and 2223-25 South 18th Street.



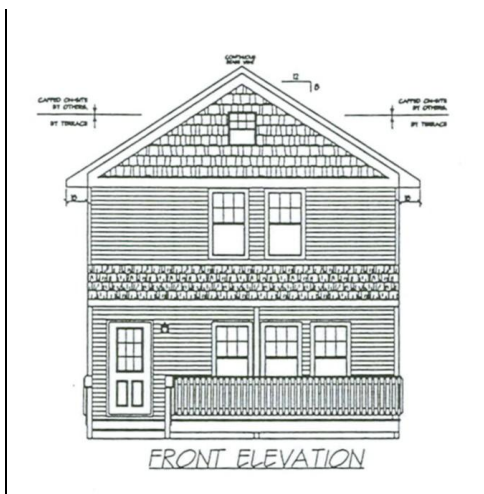
1977 SOUTH 11TH STREET



2223-25 SOUTH 18TH STREET

BUYER

The Milwaukee Christian Center, Inc., ("MCC") is a social service and neighborhood development agency dedicated to serving youth, families and seniors. Founded in 1921, MCC started its Neighborhood Improvement Project in 1975. In January 2006, MCC received a \$519,621 HUD Youthbuild award to construct single-family, owner-occupied homes and train at-risk youth in home construction trades. MCC also received an Americorps grant of \$139,600 beginning in September, 2006 and ending in August, 2007, which is renewable for two more years before re-competing. This will enable the HUD Youthbuild grant to be extended for the full 30 months into fall of 2008. Funding for 2007 also was provided by the City of Milwaukee Community Development Grants Administration (CDGA) through \$105,000 of CDBG funds and \$20,000 of HOME funds. CDGA will allow MCC to revolve all of the proceeds of the sale of the first house (\$113,000) into the program. Earlier in 2007, the City sold two lots to MCC for construction of single-family homes under its Neighborhood Improvement Project.



Preliminary Elevation



2006 Homes

PROPERTY USE

Construction of two, two-story, 1,672 SF homes with three bedrooms and two full baths. Two-car garage will be at the rear of the properties with access from the alley. Total construction costs will be \$190,000 for each house, and when completed, the homes will be sold to low-moderate income owner-occupants.

OFFER TERMS AND CONDITIONS

The lots will be sold for \$500 each. Closing will occur once MCC has final plans approved for permitting and financing in place. Construction will be expected to commence within three months of closing and MCC will have 12 months to complete construction.