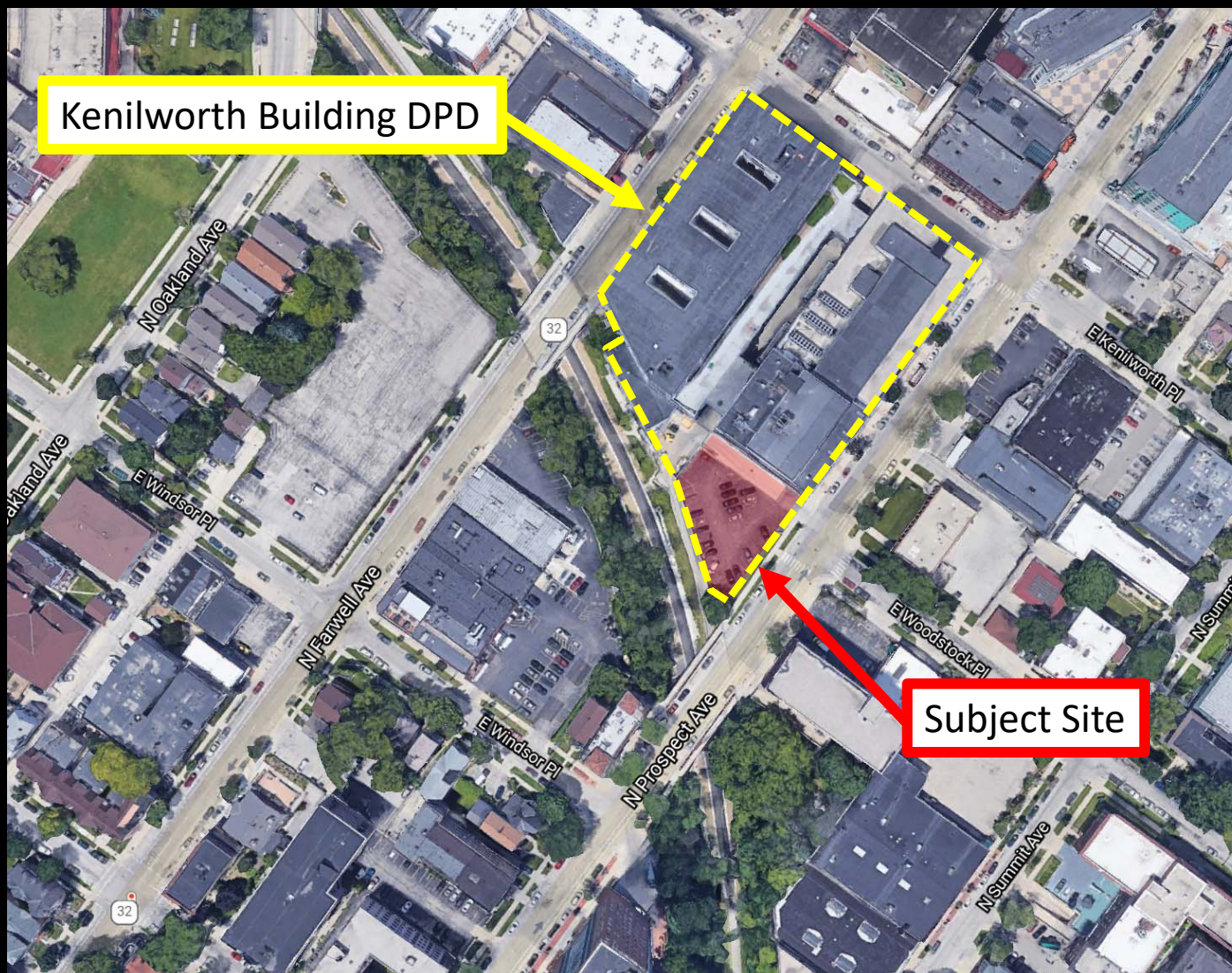


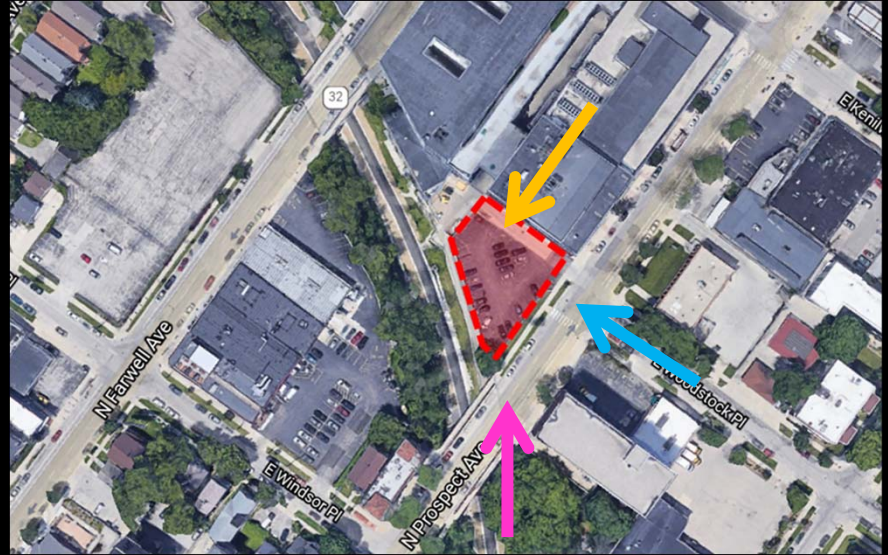
File No. 201280. Substitute resolution relating to a Minor Modification to the Detailed Planned Development known as the Kenilworth Building to allow a temporary surface parking lot at 2135 North Prospect Avenue, located on the west side of North Prospect Avenue, south of East Kenilworth Place, in the 3rd Aldermanic District.



File No. 201280. Site Context Photos.



Internal view looking south-east

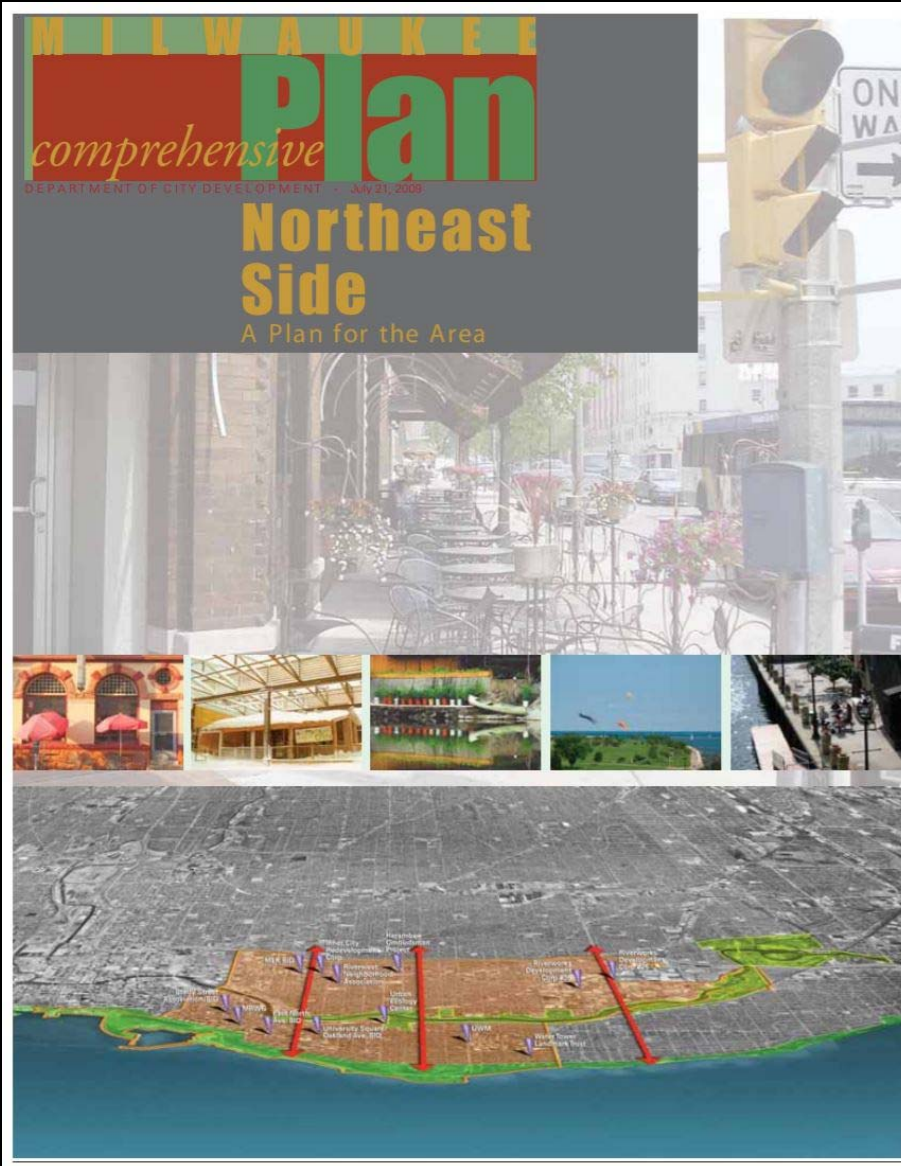


View from N. Prospect Ave looking north



View from N. Prospect Ave looking north-west

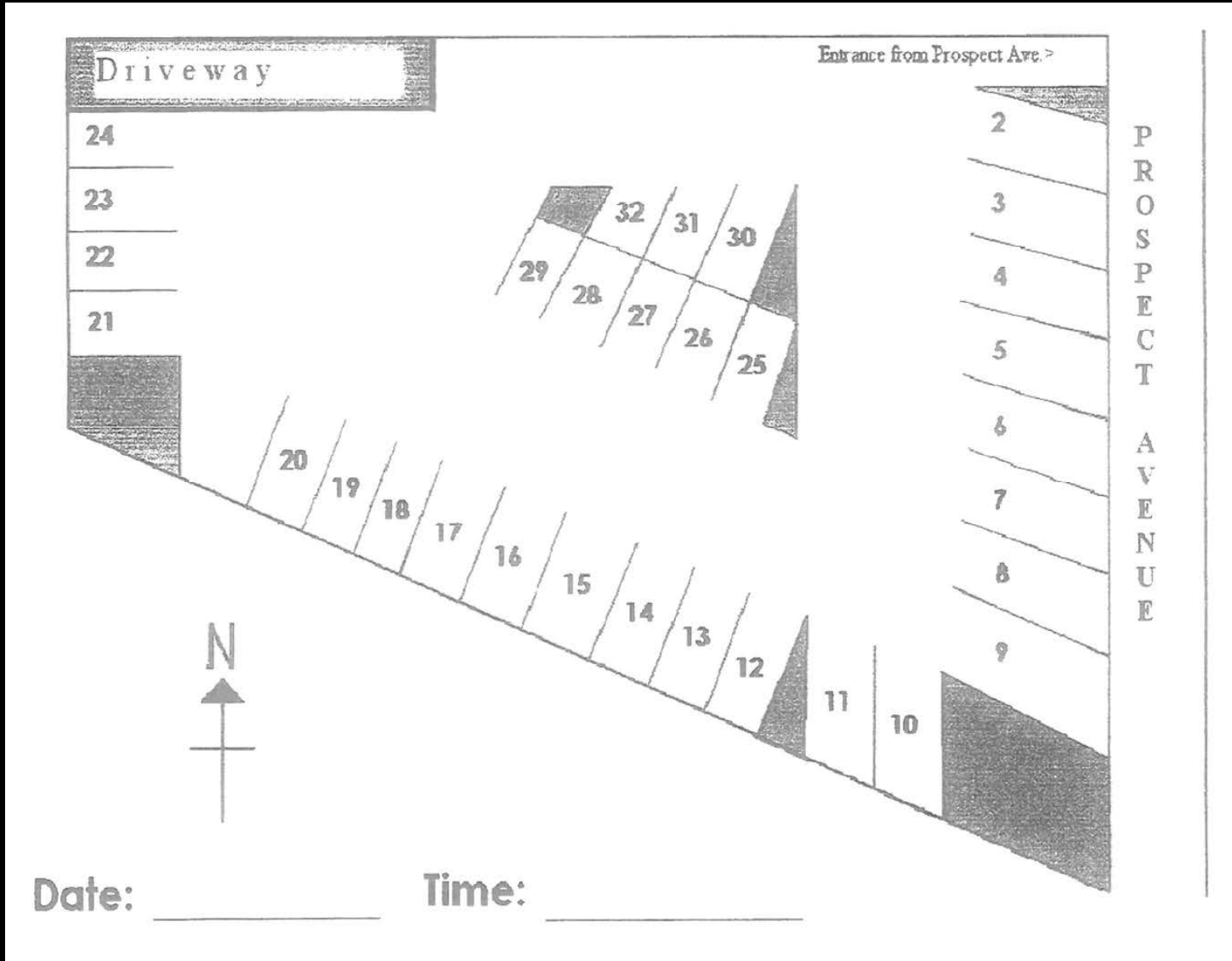
File No. 201280. Consistency with Area Plan.



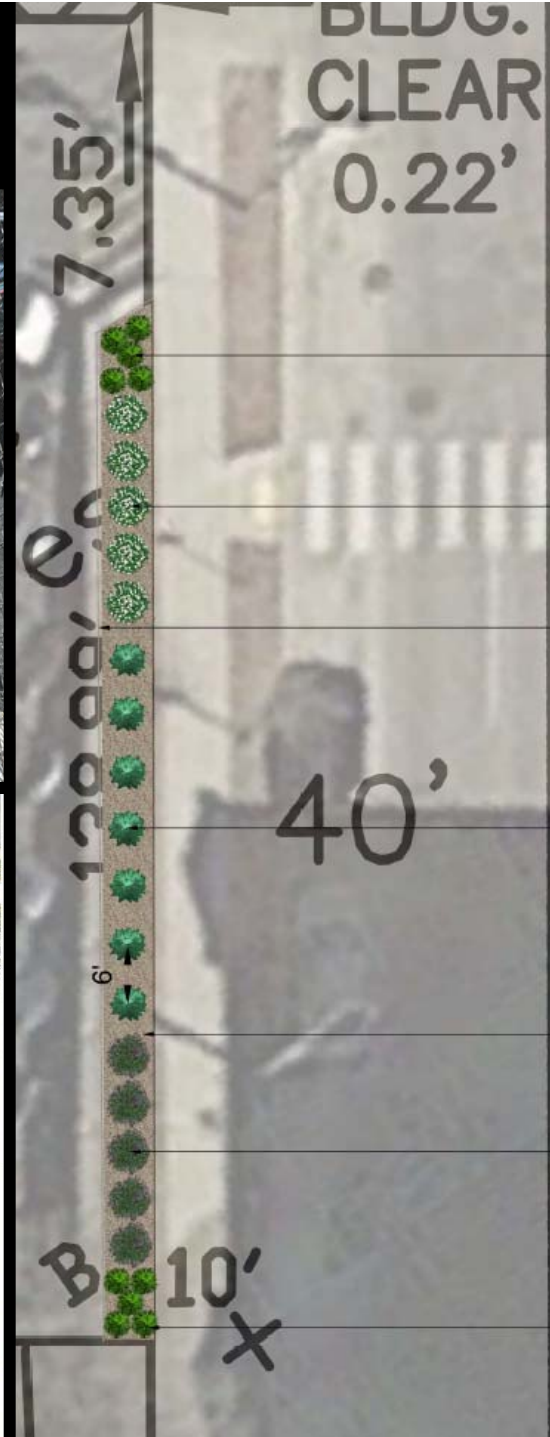
## Northeast Side Plan

- Located within the Lower East Side sub-area of the Northeast Side Plan.
- The plan would support a new development at this site rather than a surface parking in the long term. However, given that the minor modification will require landscaping to be installed along the street edge and establish that the parking lot is temporary, **the proposed minor modification is consistent with the Northeast Side Area Plan.**

File No. 201280. Exhibit Images.



File No. 201280. Exhibit Images.



(5) Overdam Grasses  
3' H x 2' W mature size



(5) Little Limestone Hydrangea  
(4' H x 4' W Mature Size)



Existing  
Chainlink Fence



(7) Trautman Juniper  
(12' H x 4' W  
Mature Size)

40'

Shredded Hardwood  
Bark Mulch



(5) Violet Uprising Lilac  
(4'-6' H x 4'-5' W Mature Height)



(5) Overdam Grasses  
3' H x 2' W mature size

