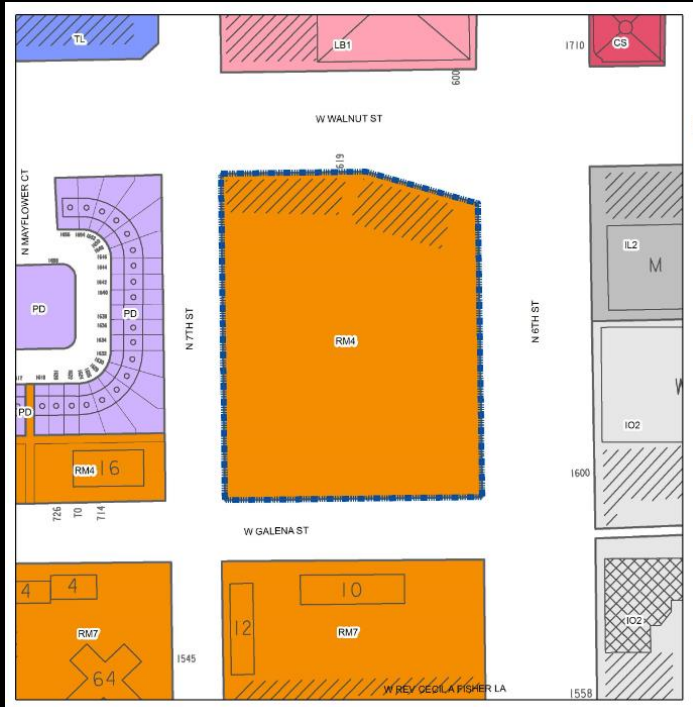


File No. 131373. An ordinance relating to the change in zoning from Multi-Family Residential to a Detailed Planned Development known as the Sojourner Family Peace Center, for new construction, on land located at 619 West Walnut Street, in the block bounded by West Walnut Street, North 6th Street, West Galena Street and North 7th Street, in the 6th Aldermanic District.

Proposed Vacation Limits



FN 1
RM4
Apr
Leg
Zon
MAF
0 50 100 200 Feet
Data Source:
Dept. of City Development 2014

* Building on site in photo has since been razed

File No. 131373. An ordinance relating to the change in zoning from Multi-Family Residential to a Detailed Planned Development known as the Sojourner Family Peace Center, for new construction, on land located at 619 West Walnut Street, in the block bounded by West Walnut Street, North 6th Street, West Galena Street and North 7th Street, in the 6th Aldermanic District.



File No. 131373. An ordinance relating to the change in zoning from Multi-Family Residential to a Detailed Planned Development known as the Sojourner Family Peace Center, for new construction, on land located at 619 West Walnut Street, in the block bounded by West Walnut Street, North 6th Street, West Galena Street and North 7th Street, in the 6th Aldermanic District.



View of current site from north



View of current site from southwest corner

File No. 131373. Context Photos



View of site to the west



View of site to the north



View of site to the east

view of downtown milwaukee from project site



SOJOURNER
FAMILY PEACE CENTER
transforming lives impacted by violence

Zimmerman
ARCHITECTURAL STUDIOS, INC.

Mortenson
construction



619 west walnut street | milwaukee, wisconsin

APRIL 7, 2014



SOJOURNER
FAMILY PEACE CENTER

Rivet
BUILD TO LAST

Sojourner Family Peace Center

PROPOSED VIEW OF CENTER FROM NORTHEAST



Zimmerman
ARCHITECTURAL STUDIOS, INC.
Mortenson
construction

APRIL 7, 2014

graphix ©2014



Sojourner Family Peace Center

PROPOSED VIEW OF SHELTER FROM SOUTHEAST



Zimmerman
ARCHITECTURAL STUDIOS, INC.

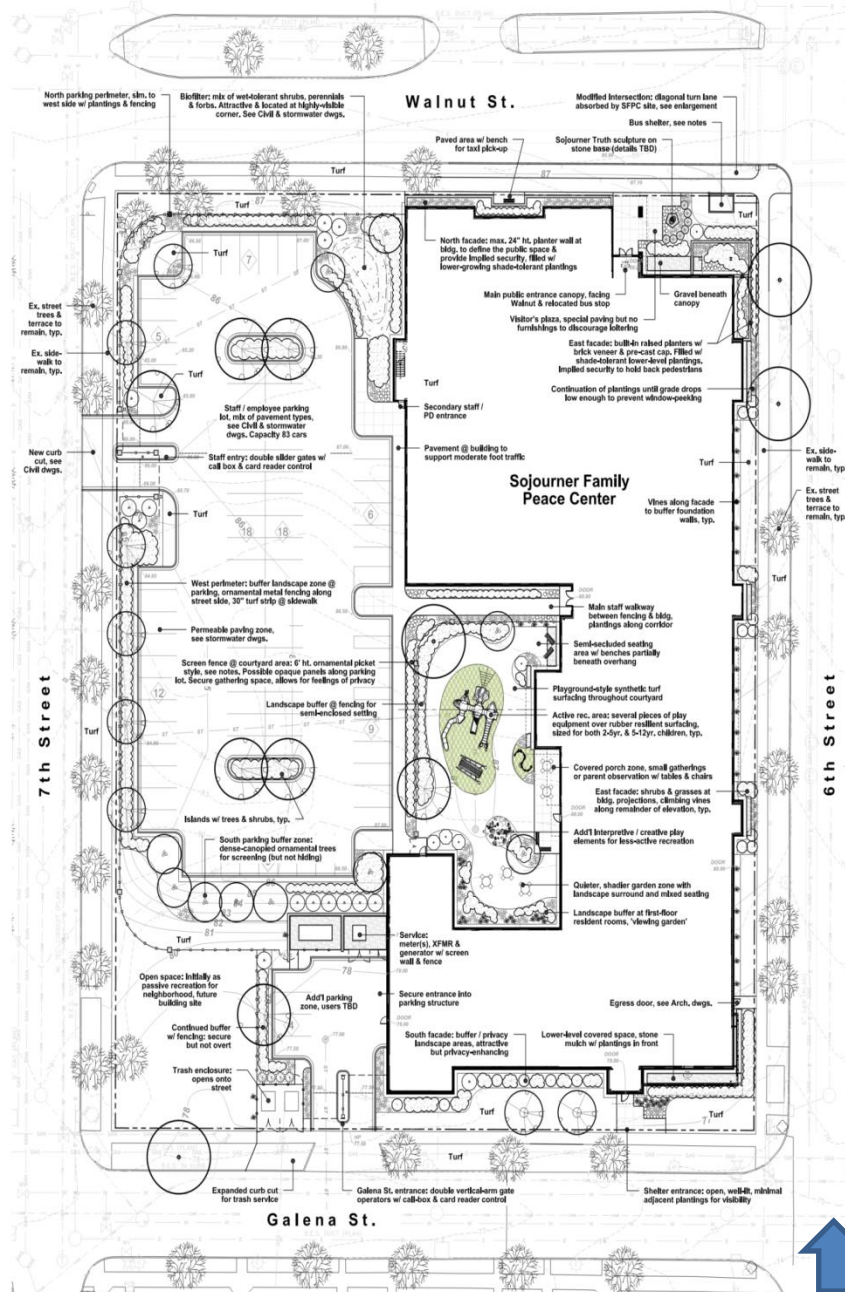
Mortenson
construction

APRIL 7, 2014

REDgraph ©2014



Sojourner Family Peace Center



FLOOR PLANS

