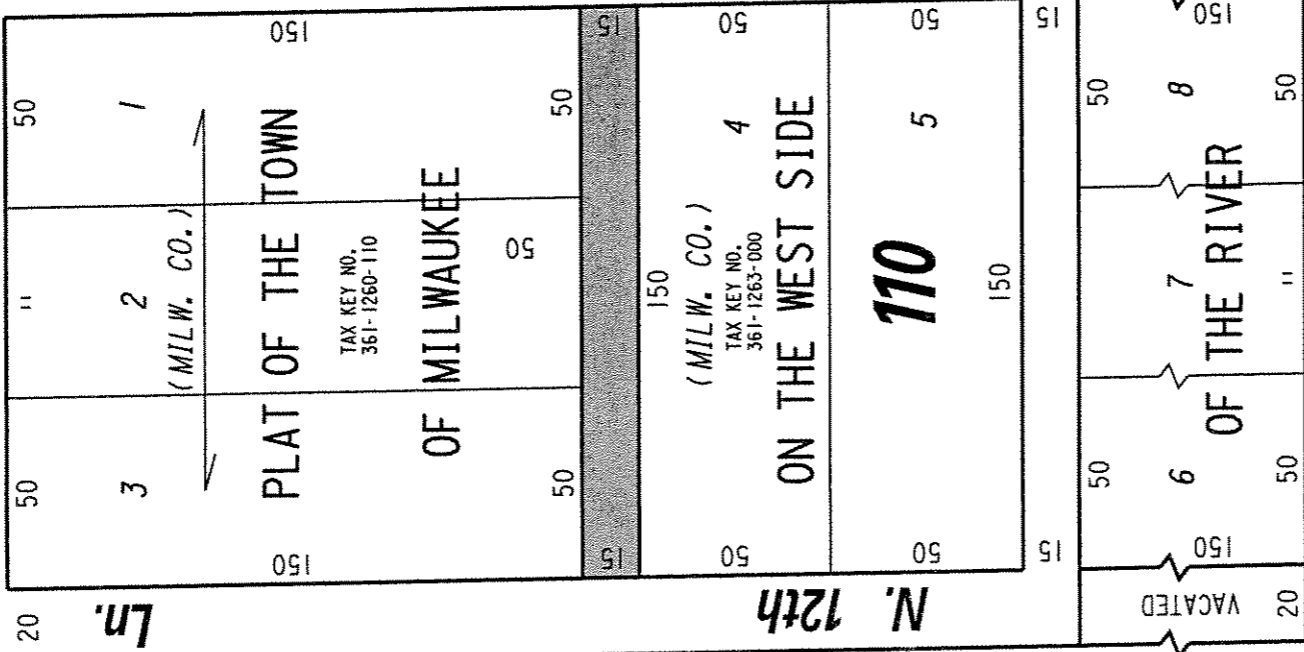


W. Cherry St.
(70' R.O.W.)



St.

(70' R.O.W.)

N. 12th

W. Vliet St.
(70' R.O.W.)

PUBLIC ALLEY
PROPOSED TO
BE VACATED

EXHIBIT "A"
FILE NO. 051341

INFRASTRUCTURE SERVICES DIVISION

MILWAUKEE, WISCONSIN
ASSIGNED TO: P.A. VELLA
DRAWN BY: P.A.V.
PROJECT/GRANT NO.: WK52337225
APPROVED BY:
CH'K'D. BY: W.E. FUCHS
DATE: APRIL 12, 2006
SCALE: 1" = 50'

Marica Lindholm
CENTRAL DRAFTING & RECORDS MANAGER
W. E. Fuchs
CITY ENGINEER