



Certificate of Appropriateness

Milwaukee Historic Preservation Commission/200 E. Wells Street/Milwaukee, WI 53202/phone 414-286-5712/fax 414-286-3004

Property	4243 W. North Ave. Sherman Boulevard HD
Description of work	Install freestanding Type A sign in an existing planter at the front entrance of the Finney Market. Sign dimensions: 15' 8" W x 4' 10" H. The projecting letters will be pin mounted to a translucent polycarbonate face. The sign will be capped with a 'cantilevered overhanging cap' clad with white stucco. The sign will be externally illuminated by mounted pendant lighting from above and up lighting mounted in the planter base below.
Date issued	11/4/2019 PTS ID 114884 COA Finney Market signage

In accordance with the provisions of Section 320-21 (11) and (12) of the Milwaukee Code of Ordinances, the Milwaukee Historic Preservation Commission has issued a certificate of appropriateness for the work listed above. The work was found to be consistent with preservation guidelines. The following conditions apply to this certificate of appropriateness:

All work must be done in a craftsman-like manner, and must be completed within one year of the date this certificate was issued. Staff must approve any changes or additions to this certificate before work begins. Work that is not completed in accordance with this certificate may be subject to correction orders or citations. If you require technical assistance, please contact the Historic Preservation staff as follows: Phone: (414) 286-5712 E-mail: hpc@milwaukee.gov.

If permits are required, you are responsible for obtaining them from the Milwaukee Development Center. If you have questions about permit requirements, please consult the Development Center's web site, www.milwaukee.gov/build, or call (414) 286-8210.



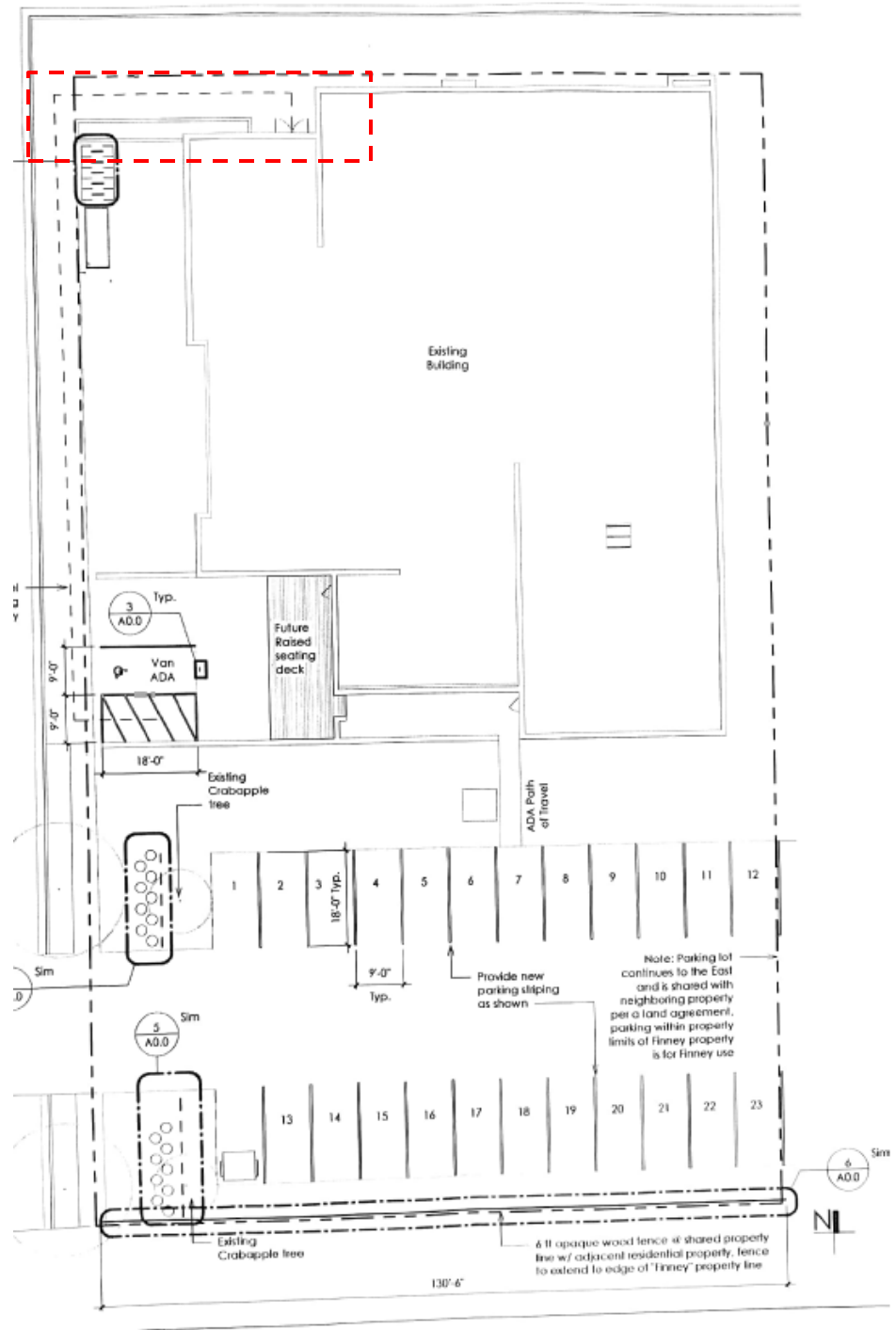
City of Milwaukee Historic Preservation Staff

Copies to: Development Center, Ald. Russell W. Stamper, II



Street view of the home ca. Nov 2018
Corner of Sherman Boulevard and North Avenue
Existing planter indicated in red

Site plan of Finney Market
 Planter location indicated in red



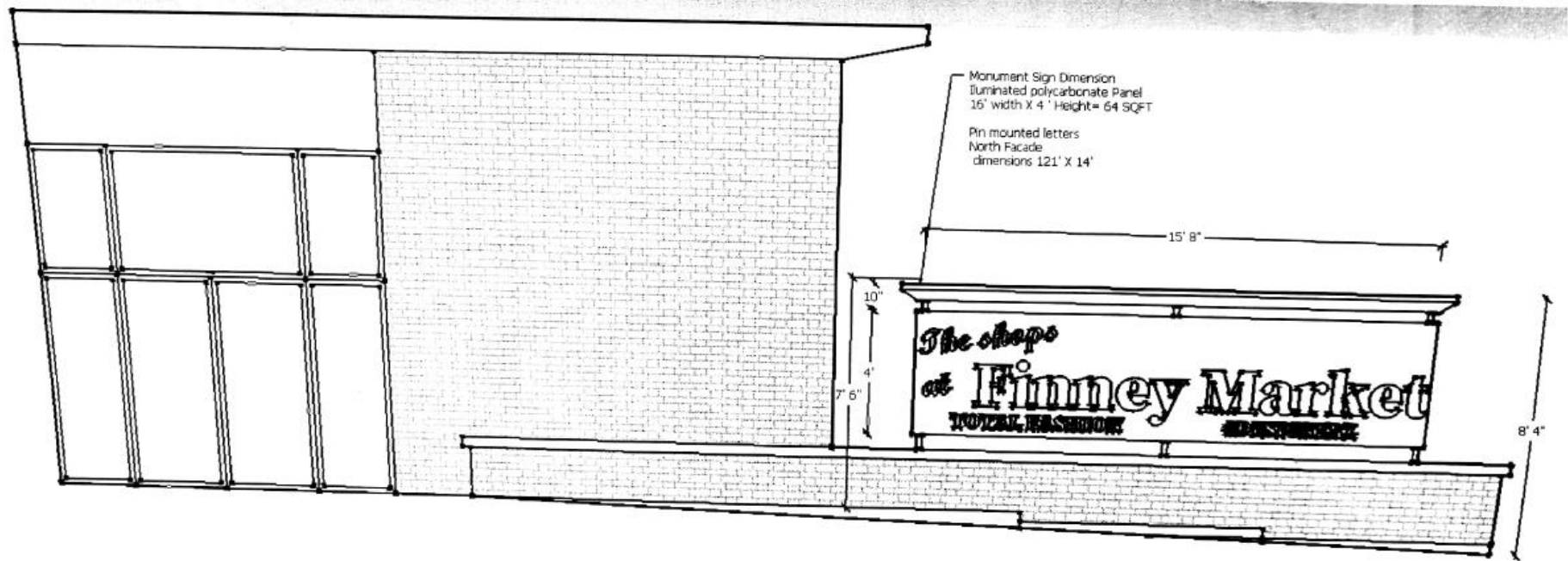


Previous condition of the planter prior to rehabilitation



Present condition of the planter after rehabilitation

Proposed sign will sit within the existing planter



Elevation drawing

Sign dimensions: 15' 8" W x 4' 10" H

Overall height (including planter base) ranges 7' 6" - 8' 4"

Drawing does not reflect the exact design of the sign (see following page for rendering of the sign)



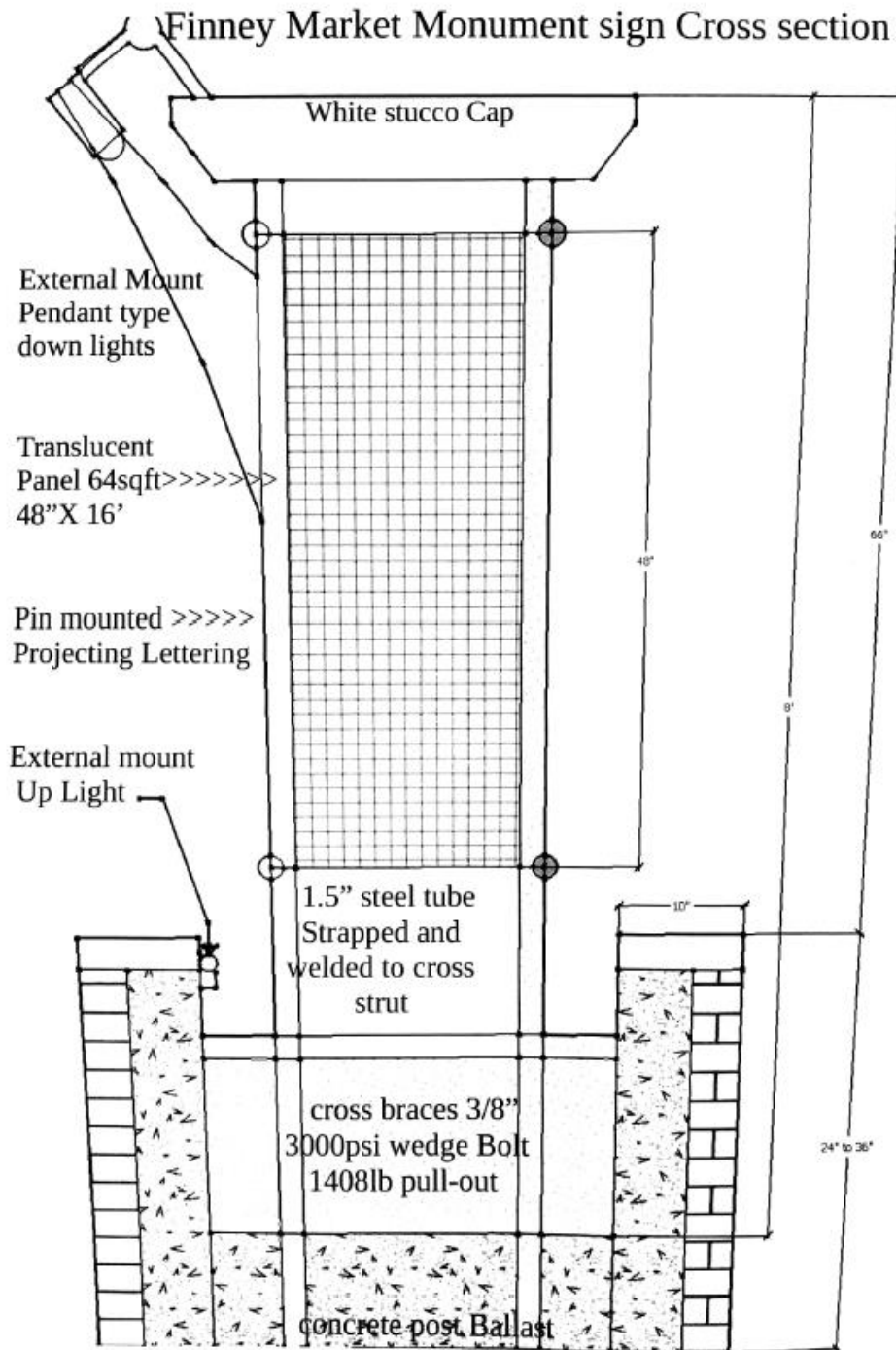
Rendering

Reflects that the sign will read "The Shops of" in minor text at the top of the sign and "Finney Market" in larger text at the center of the sign.

Letters will be pin mounted to a translucent polycarbonate sign face

The 'cantilevered overhanging cap' takes cue from the cantilevers of the entrance and windows at the roofline of the building. According to the cross-section drawing on the following page, the cantilevered cap will be white stucco.

Finney Market Monument sign Cross section



Cross section drawing

The sign is a Type A Freestanding sign that will be externally illuminated from above by mounted pendant type lights and from below by up lighting mounted within the planter.

Roeglin, Tanya <TROEGL@milwaukee.gov>

To:Matthew Bohlmann

Cc:Roeglin, Tanya

Oct 7 at 10:03 AM

Hi Matt

The revised illumination meets the criteria to be considered a type A sign, which would be permitted once Historic Preservation approves the COA. Please forward a copy once you have obtained it to get the sign permit issued.

The only other question regarding the sign is if the existing planter has a footing, and the inspector will need to verify this during the construction of the sign. The sign will need to be compliant with the MCO 244-5 Wind Pressure, Allowable Stresses, and Materials which can be found at :

<https://city.milwaukee.gov/ImageLibrary/Groups/ccClerk/Ordinances/Volume-2/CH244.pdf>

Thank you

Tanya Roeglin

Plan Examiner Specialist

City of Milwaukee

Department of Neighborhood Services

809 N Broadway

Milwaukee, WI 53202-3617

troegl@milwaukee.gov

(414) 286-2680 (voice)

Email correspondence with plan examiner indicating that the sign design is permissible by code, but that an inspector will need to confirm that the sign will be compliant with MCO 244-5 during construction