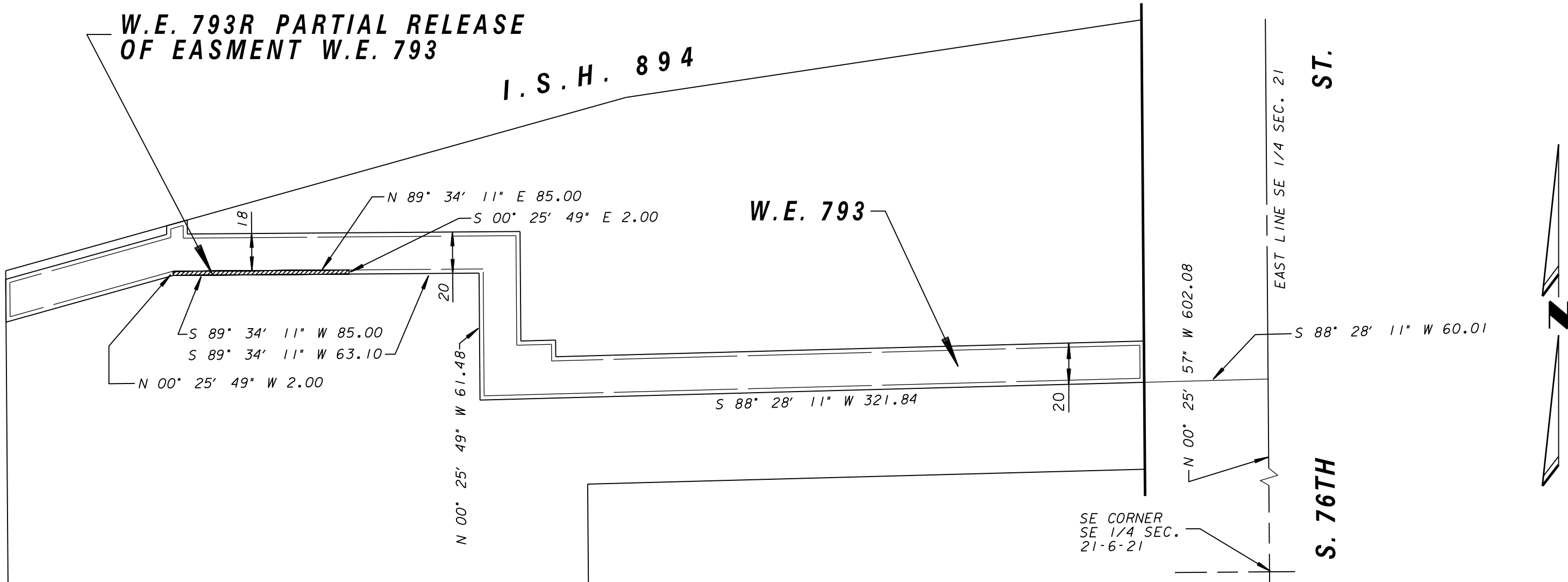


S.E. 1/4 OF SEC. 21, T. 6 N., R. 21 E.

W.E. 793R PARTIAL RELEASE
OF EASMENT W.E. 793

I.S.H. 894

W.E. 793



ST.

S. 76TH



C.S.M.
NO.
6098

PARCEL 1

SE CORNER
SE 1/4 SEC.
21-6-21

W.E. 793R PARTIAL RELEASE
OF WATER EASEMENT W.E. 793

Milwaukee Water Works **Water Engineering**
Department of Public Works
Milwaukee, Wisconsin

WATER EASEMENT

AT **PARCEL 1, C.S.M. NO. 6098**
FROM **WEST OF S. 76TH ST.**
TO **SOUTH OF I.S.H. 894**

SCALE	1" = 50'
1/4 SEC. NO.	605
PLAN DATE	5-30-12
DRAWN BY	A.P.J.
CHECKED BY	P.W.P.
REVIEWED BY	
WORK ORDER	0232

APPROVED	DATE
<i>[Signature]</i>	5-31-12
<i>[Signature]</i>	5-31-12
<i>[Signature]</i>	5-31-12

Special Deputy Commissioner of Public Works

SHEET NO. 1 OF 1 PLAN FILE NO. **WE793R**