

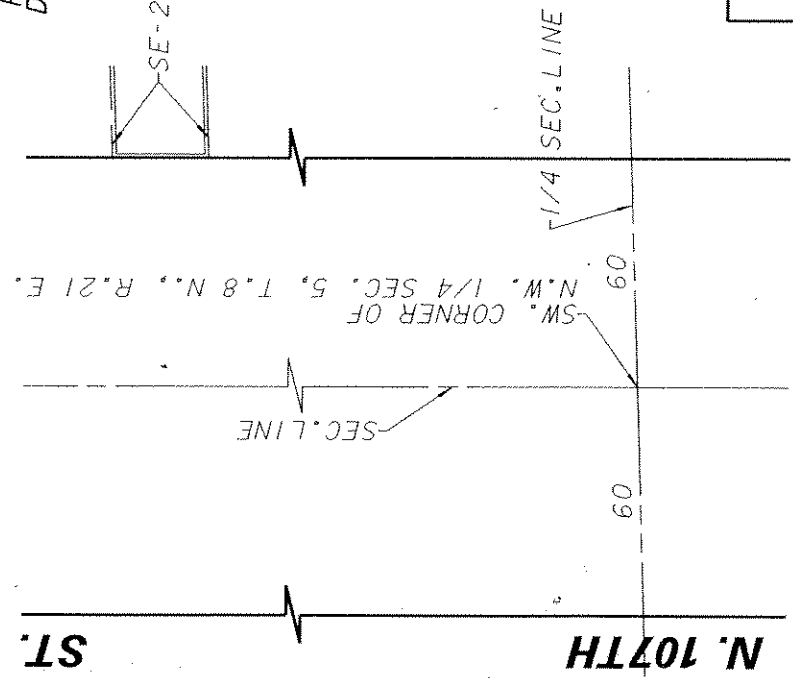
W. GLENBROOK

CT.

C.S.M. NO. 7829

MIDWEST PRODUCTS AND
ENGINEERING INC.
10597 W. GLENBROOK CT.
003-0191-000

LOT 1



ENVIRONMENTAL ENGINEERING SECTION
INFRASTRUCTURE SERVICES DIVISION
DEPARTMENT OF PUBLIC WORKS
MILWAUKEE, WISCONSIN

PLAN OF SEWER EASEMENT

AREA IN **N.W. 1/4 SEC. 5, T.8 N., R.21 E.**
IN 650' N. OF W. FAIRY CHASM ROAD (EXT'D.)
AND 800' E. OF N. 107TH STREET

SCALE 1" = 50'	ATLAS PAGE NO. 003	EASE. NO. SA-2080A
DRAWN BY JAWISE	CHK'D. BY A.MUNOZ	W.O. NO. WK68320005
APPROVED <i>Martin Caputo</i>	DATE 12/14/06	FILE NO. 198-6-20
APPROVED <i>[Signature]</i>		