



LIVING WITH HISTORY

# Certificate of Appropriateness

Milwaukee Historic Preservation Commission/200 E. Wells Street/Milwaukee, WI 53202/phone 414-286-5712/fax 414-286-3004

**Property** 307 E. WISCONSIN AV. **East Side Commercial Historic District**  
**Description of work** Install projecting type A internally illuminated signage and window signage  
**Date issued** 5/17/2013 PTS ID 87406 COA, signage

In accordance with the provisions of Section 320-21 (11) and (12) of the Milwaukee Code of Ordinances, the Milwaukee Historic Preservation Commission has issued a certificate of appropriateness for the work listed above. The work was found to be consistent with preservation guidelines. The following conditions apply to this certificate of appropriateness:

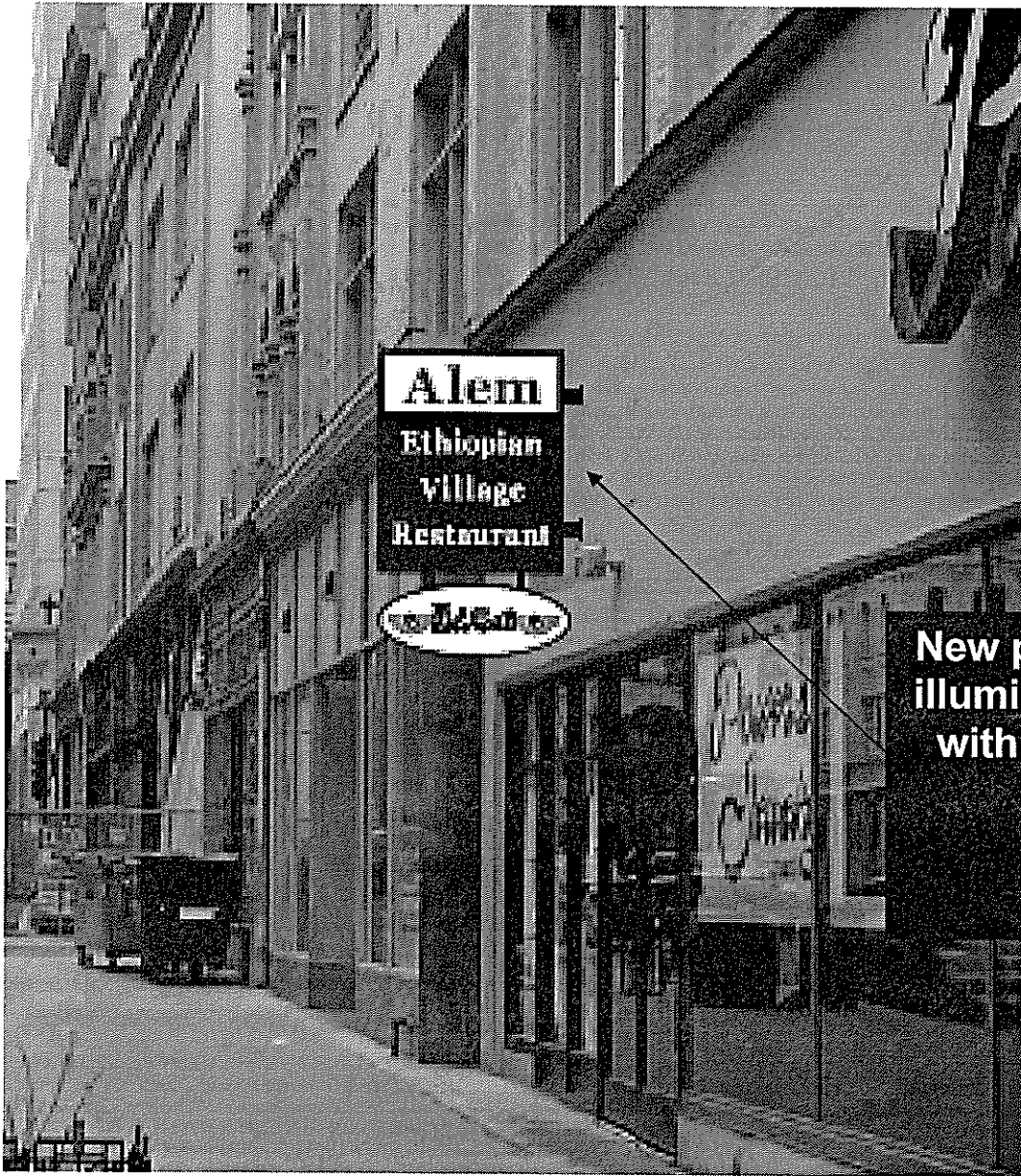
All work will be done according to attached drawings and specifications.

All work must be done in a craftsman-like manner, and must be completed within one year of the date this certificate was issued. Staff must approve any changes or additions to this certificate before work begins. Work that is not completed in accordance with this certificate may be subject to correction orders or citations. If you require technical assistance, please contact Paul Jakubovich of the Historic Preservation staff as follows: Phone: (414) 286-5712 Fax: (414) 286-3004 E-mail: [pjakub@milwaukee.gov](mailto:pjakub@milwaukee.gov).

If permits are required, you are responsible for obtaining them from the Milwaukee Development Center. If you have questions about permit requirements, please consult the Development Center's web site, [www.milwaukee.gov/build](http://www.milwaukee.gov/build), or call (414) 286-8210.

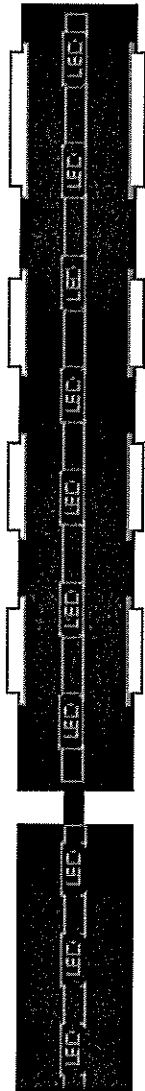
Paul Jakubovich  
City of Milwaukee Historic Preservation

Copies to: Development Center, Ald. Robert Bauman, Contractor Paul Ditter Alpha-neonx, Inspector Bill Richter (286-2518), Inspector Heidi Weed



**New projecting, type A internally illuminated sign. Type B Tagline with the word Alem beneath it.**

8" deep



**CABINET:** EXTRUDED ALUMINUM DOUBLE FACE CABINET, INTERNALLY ILLUMINATED WITH WHITE LED LIGHTING, PAINT CABINET SATIN BLACK.

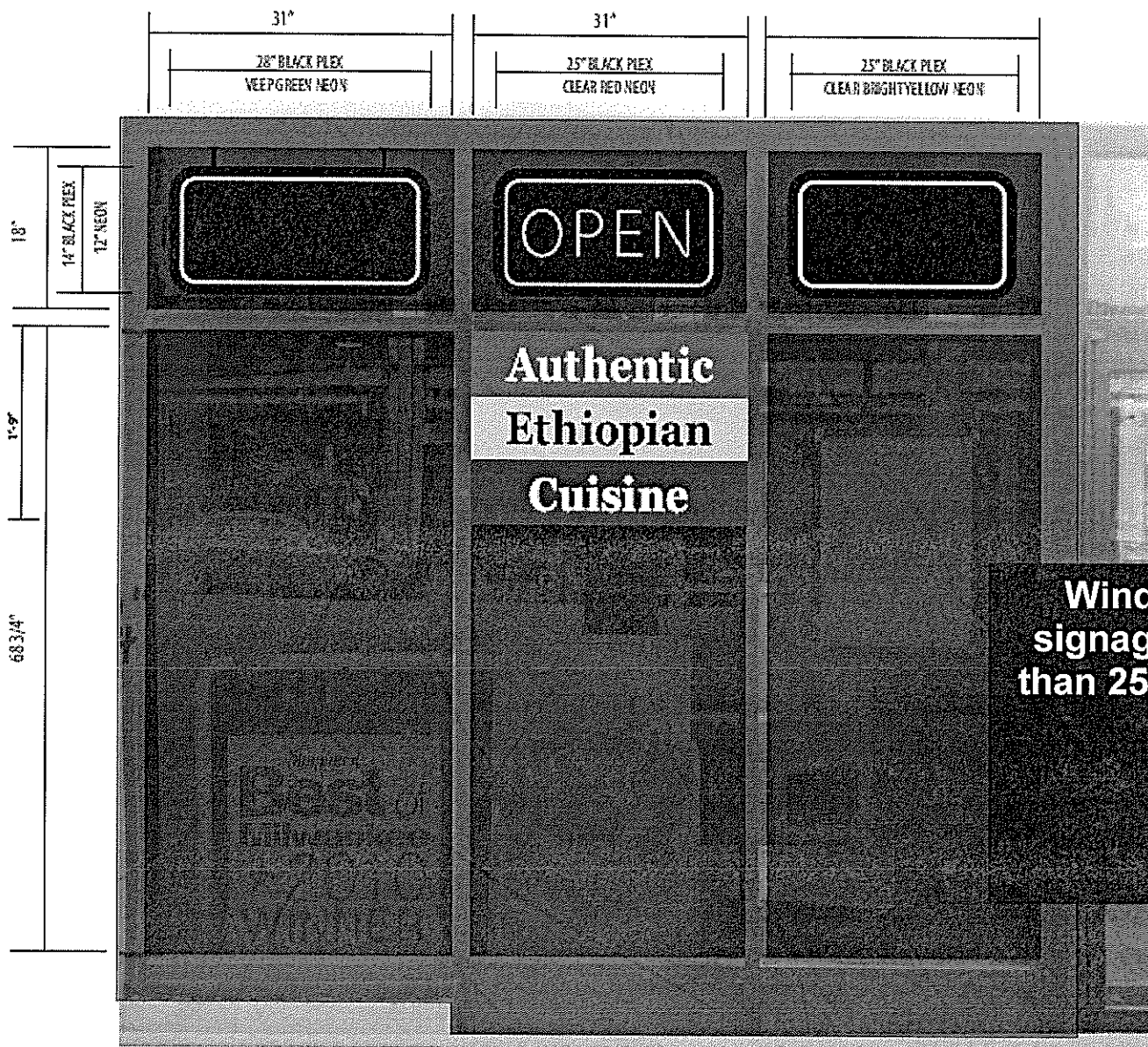
**TOP SIGN FACES:** ALUMINUM FACES PAINTED BLACK AND WHITE, ALL COPY AND GRAPHICS TO BE 1/8" PLEX "PUSH THRU" DECORATE "ALEX" WITH RED TRANSLUCENT VINYL

**OVAL CHANNEL SIGN:**

ALUMINUM CONSTRUCTED OVAL CHANNEL SIGN, WHITE PLEX FACES, BACK LIGHTED WITH WHITE LED LIGHTING, DECORATE FACES WITH FULL COLOR DIGITAL PRINT ON TRANSLUCENT VINYL. HANG WITH 1" SQUARE ALUMINUM TUBE SUPPORTS (STATIONARY), WIREWAY INSIDE SUPPORTS, BLACK TRIM CAP, RETURNS AND SUPPORTS.

**INSTALL:** STEEL SUPPORTS, LAG BOLT ATTACH WITH PLATED, \*\*FIELD SURVEY REQUIRED FOR BEST ATTACHMENT METHOD\*\*

**Specifications for new projecting sign. Type A with tagline sign beneath.**



**Window signage. No signage may cover more than 25% of any individual window**

