

March 7, 2005

Mayor Barrett and Common Council Members:

Operating Engineer Local 139 has been requesting a meeting with the Mayor's Office about implementation of File No. 020790 since March 4, 2003. This resolution was passed by the Common Council so the City of Milwaukee could share services with other municipalities and earn revenue for the taxpayers of the City of Milwaukee.

Neither ex-mayor Norquist, ex-mayor Pratt, nor Mayor Barrett's Office have yet to meet with us. Alderman D'Amato and Alderman Dudzik were instrumental with the passage of this resolution. Construction season is fast approaching and we want to be a part of a financial solution for our City.

Since we are talking about saving money, why did the three prentice-loaders normally used in winter for special pick-ups get knocked off on December 27, 2004? The prentice loader is a multi-purpose, single operator machine. Cost figures show how the City can save \$4,200 to \$4,600 a month, per machine, by using the prentice loader instead of replacing it with a two person garbage packer crew or a two person skid loader crew.

The following is a monthly rate:

Prentice Loader cost		Two person garbage crew	
260.14	Machine	1,051.75	Packer
<u>8,451.20</u>	Oper + benefits	5,940.80	Driver + benefits
		<u>5,940.80</u>	Worker + benefits
8,711.34		12,933.35	

Skid Loader Crew

1,051.75	Machine/Packer
371.75	Dump truck to pull trailer
59.38	Skid loader
32.75	Trailer
5,940.80	Driver + benefits
<u>5,940.80</u>	Skid oper + benefits
13,397.23	

Cost Differences:

Two person garbage crew + packer

12,933.35

8,711.34 prentice loader

4,220.01 – Savings using prentice loader

Skid crew

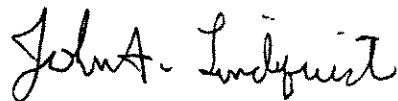
13,397.23

8,711.34 prentice loader

4,689.89 – Savings using prentice loader

As you can see by the cost figures, using as many (one person) prentice loader machines as possible will save money. Since December 27, 2004 when they parked the three prentice loaders that normally work the winter, the City of Milwaukee taxpayers have spend \$42,209.01 that they did not need to. Put us back to work! We are prepared to sit down and talk to you and show you where the cost figures came from. We also want to earn the taxpayers revenue. Implement File No. 020790 now!

Semper Fi



John A. Lindquist

Local 139 Operating Engineers

3433 N Fratney St

963-0398

**cc: DPW Commissioner
DPW - Operations Division**

Vehicle # **42201**

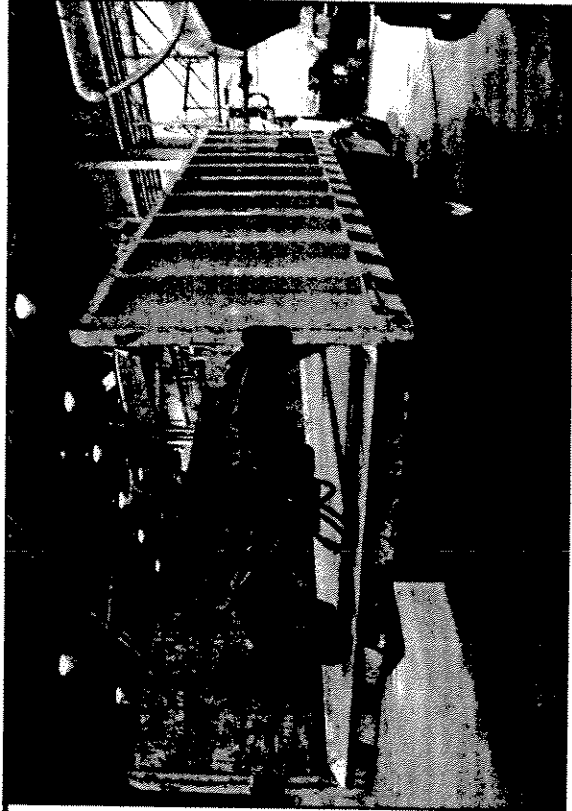
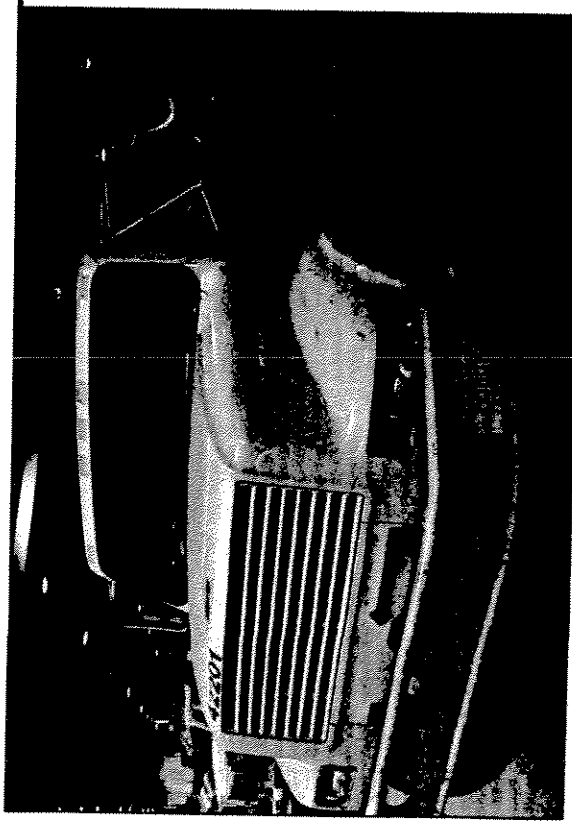
Today's Date: 12/20/2004
Initials: Kdv



Motor Equipment Data Card

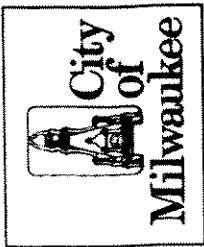
Buildings & Fleet Services, City of Milwaukee, WI

Vehicle Description: Log Loader Dept. Assign: B+F Pool CRG
Year: 1997 Make: International Model/Size: 4900



License Plate # 55809 Miles/Hours 97446 VIN # 1HTSDAARXVH467566
Condition Ratings 1 = Poor 2 = Fair 3 = Average 4 = Good 5 = Excellent
Chassis Condition **2** Body Condition **2**

General Comments:
Scratched, rusting.



Motor Equipment Data Card

Buildings & Fleet Services, City of Milwaukee, WI

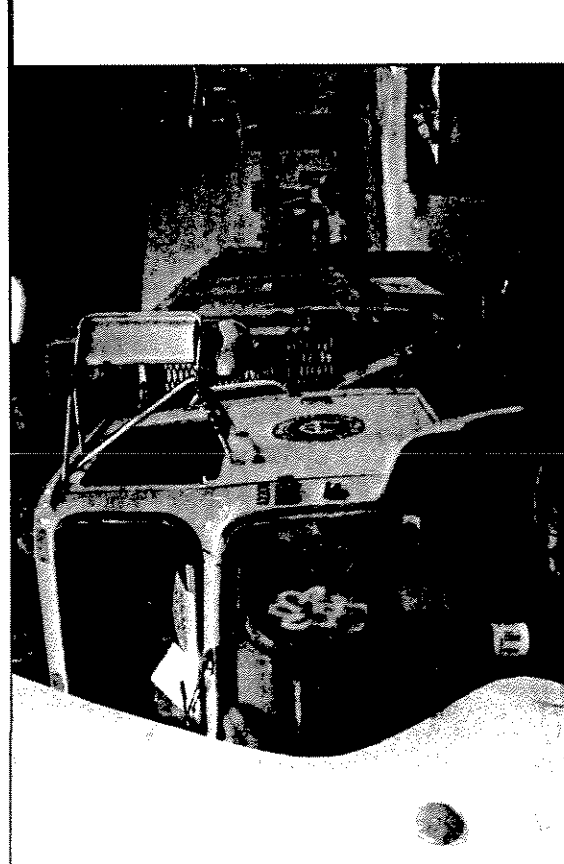
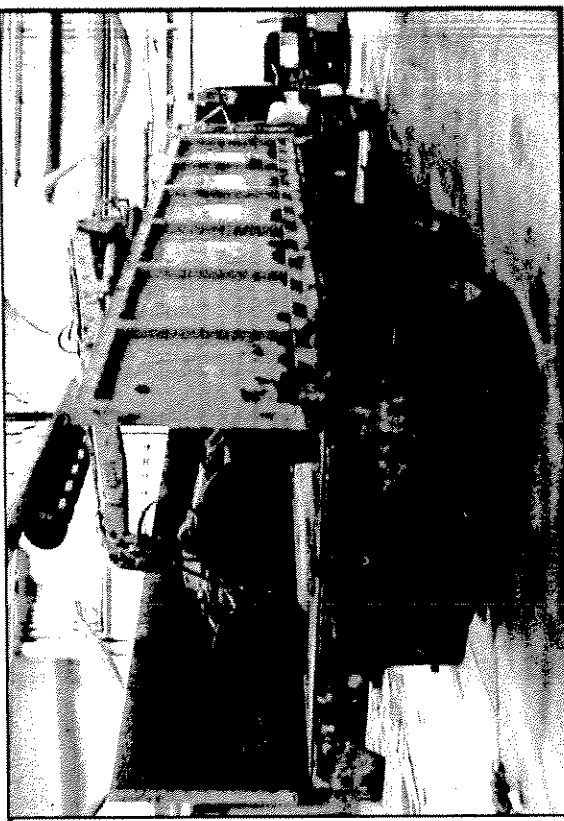
Vehicle # **42209**

Today's Date: 12/15/2004

Initials: Kdv

Vehicle Description: **Log Loader** Dept. Assign: **B+F Pool CRG**

Year: **1991** Make: **International** Model/Size: **2654**



License Plate # **43958** Miles/Hours **101845** VIN # **1HTGHAAT5SH623790**

Condition Ratings 1 = Poor 2 = Fair 3 = Average 4 = Good 5 = Excellent

Chassis Condition **3** Body Condition **2**

General Comments:
"Bed" portion of truck is rusted.

MONEY LOST UP TILL SEPTEMBER 1, 2005
BY NOT USING 3 P/L'S ON SPECIAL PICK-UP.

2 MAN HAND CREW

MONTHLY SAVINGS \$ 4,220.01 - USING P/L

3 P/L'S $\times 3$

12,660.03

8 MONTHS $\times 8$

101,280.24 MONEY
WASTED

2 MAN SKID CREW

MONTHLY SAVINGS 4,689.89 - USING P/L

3 P/L'S $\times 3$

14,069.67

8 MONTHS $\times 8$

112,557.36 MONEY
12,660.03 WASTED

125,217.39