

N.E. 1/4 SEC. 20, T.7N., R.22E.

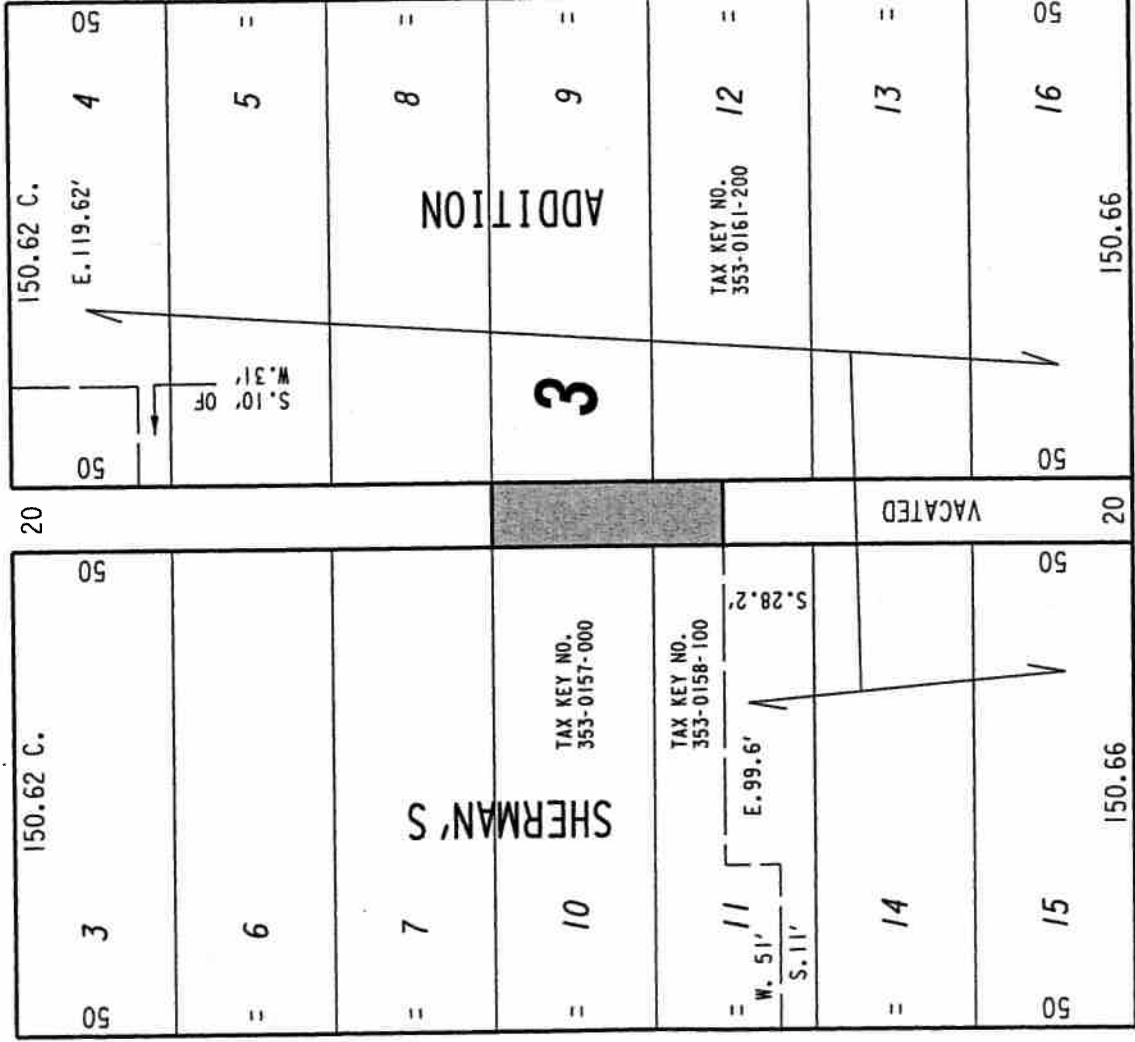
353

(R.O.W. VARIES)

E. North

Ave.

SEC. LINE



N. 1st St.

(80' R.O.W.)

N. Palmer St.

(80' R.O.W.)

N. Palmer St.

E. Garfield

(70' R.O.W.)

Ave.

PORTION OF PUBLIC ALLEY PROPOSED TO BE VACATED



EXHIBIT "A"
FILE NO. 081293
INFRASTRUCTURE SERVICES DIVISION

MILWAUKEE, WISCONSIN
ASSIGNED TO: W.E. FUCHS
CH'K'D. BY: W.E. FUCHS
DRAWN BY: W.E.F.
DATE: FEB. 23, 2009
PROJECT/GRANT NO.: WK52337274
SCALE: 1" = 60'
APPROVED BY:

maria Lindholm
CENTRAL DRAFTING & RECORDS MANAGER

Jeffrey Polenske
CITY ENGINEER