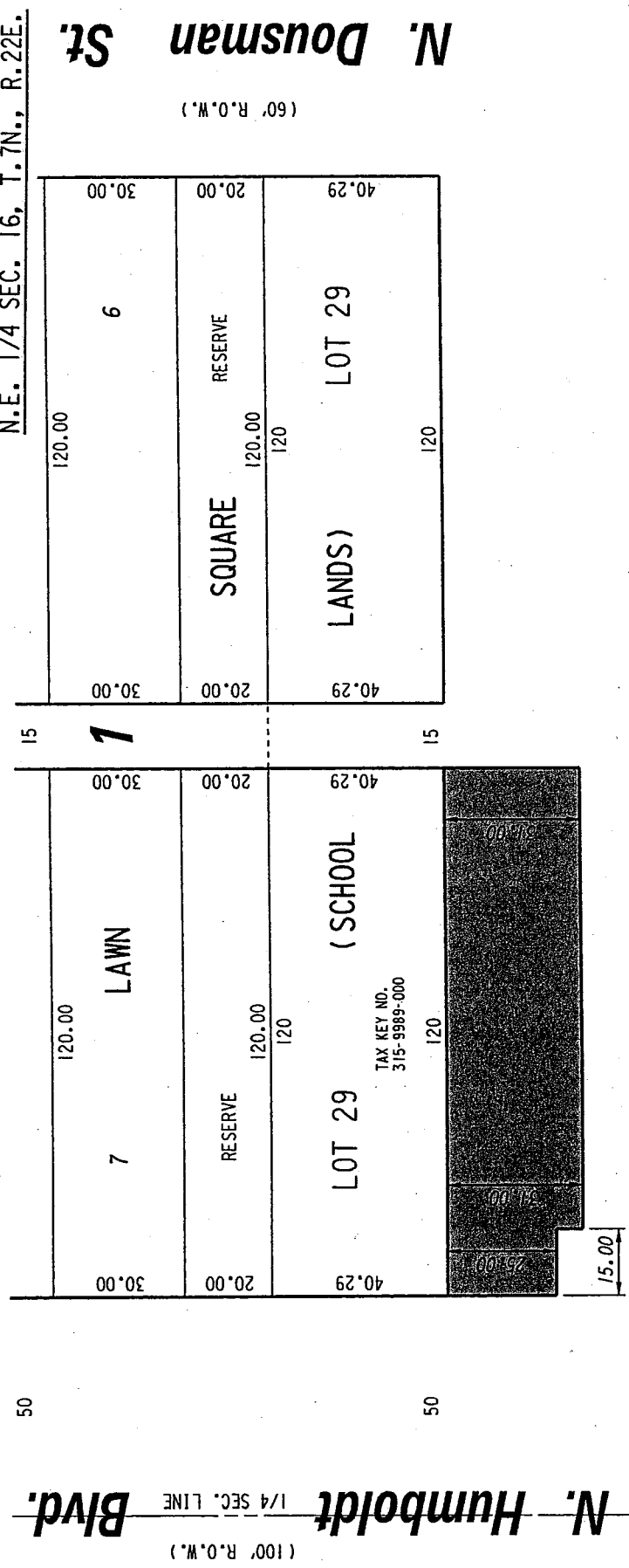


315

N.E. 1/4 SEC. 16, T.7N., R.22E.



N. Humboldt Blvd. (100' R.O.W.)
 1/4 SEC. LINE
 50

N. Dousman St. (60' R.O.W.)
 15

E. Locust St. (120' R.O.W.)
 15

PORTION OF PUBLIC STREET PROPOSED TO BE VACATED

EXHIBIT "A"
 FILE NO. 020639
 INFRASTRUCTURE SERVICES DIVISION
 MILWAUKEE, WISCONSIN

ASSIGNED TO: W.E. FUCHS
 DRAWN BY: W.E.F.
 PROJECT/GRAVIT NO.: WK52337162
 APPROVED BY:
 CH'K'D. BY: M.C. WILLIAMS
 DATE: AUG. 23, 2002
 SCALE: 1" = 30'

Marcia Lindholm
 CENTRAL DRAFTING & RECORDS MANAGER
 City Engineer