

NORTH RIVERBOAT ROAD

Potential Path to North Riverboat Road/Bearline Trail
Exact Location To Be Determined Based On Site Conditions
Maintain Maximum Slope of 10%

EAST NORTH AVENUE

PROPOSED BUILDING
FF=59.0

NORTH COMMERCE STREET

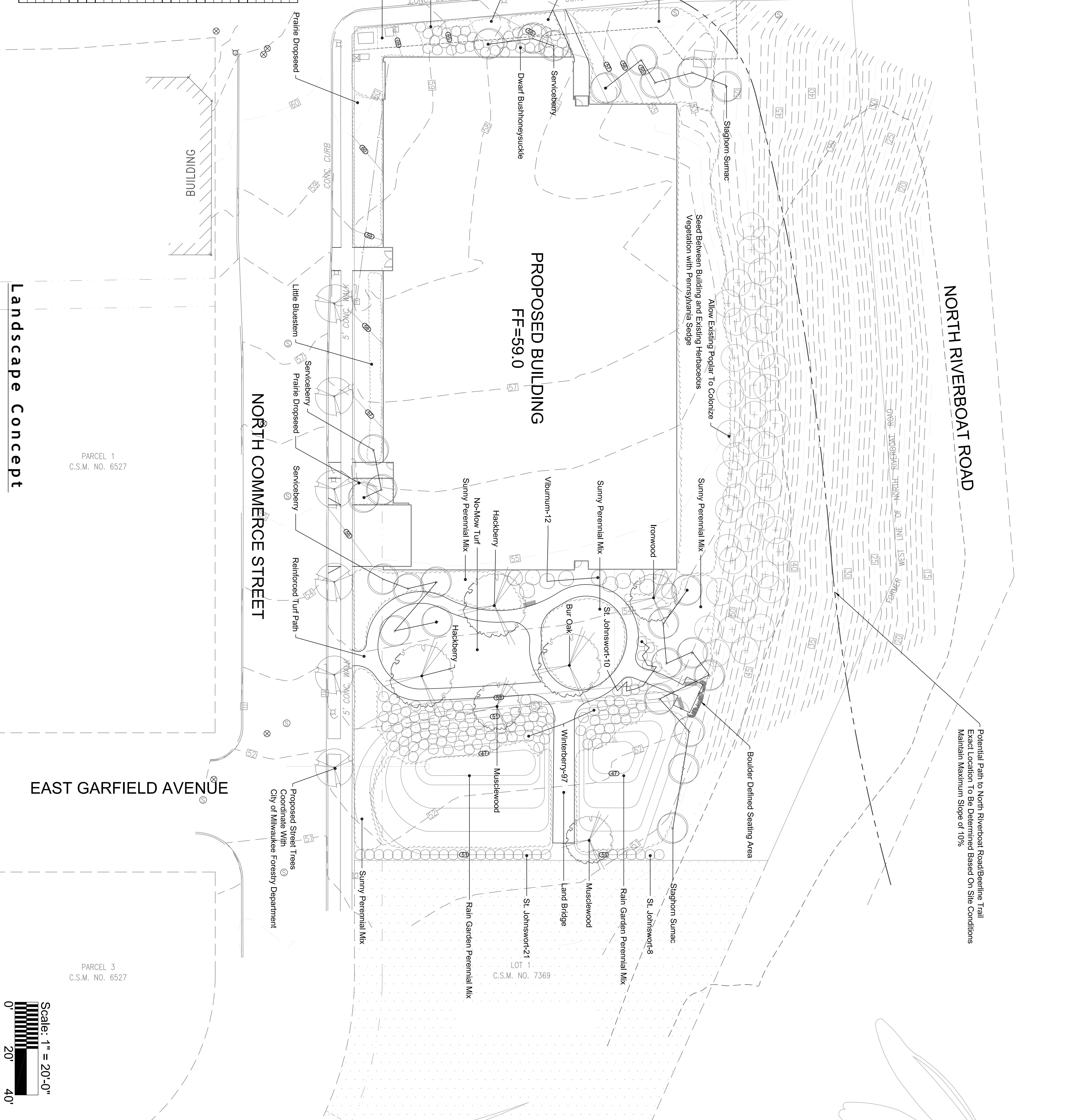
EAST GARFIELD AVENUE

Plant List

| Plant Name | Quantity | Size |
|--------------------------|----------|---------|
| 11 Serviceberry | 8x8 | 6' |
| 2 Mulcewood | 8x8 | 6' |
| 1 Hackberry | 8x8 | 2.5" |
| 1 Ironwood | 8x8 | 2" |
| 1 Bur Oak | 8x8 | 2.5" |
| 14 Staghorn Sumac | 8x8 | 15'-25" |
| 37 Dwarf Bushhoneysuckle | 8x8 | 18" |
| 39 St. Johnswort | 8x8 | 18" |
| 97 Winterberry | 8x8 | 18" |
| 12 Viburnum | 8x8 | 15" |
| 32 Turf Hair Grass | 8x8 | 4.5" |
| 48 Little Bluestem | 8x8 | 18" |
| 60 Prairie Dropseed | 8x8 | 15" |
| 129 Barberry | 8x8 | 15" |
| 1 Green Vio (Dodge) | 8x8 | 15" |
| 128 Barberry | 8x8 | 15" |
| 128 Barberry | 8x8 | 15" |
| 64 Sporeweed | 8x8 | 15" |
| 96 Oblong Plant | 8x8 | 18" |
| 672 Little Bluestem | 8x8 | 18" |
| 992 Prairie Dropseed | 8x8 | 15" |
| 54 Wild Strawberry | 8x8 | 3.5" |
| 640 Rain Joint Grass | 8x8 | 2.5" |
| 480 Rain Sedge | 8x8 | 2.5" |
| 221 Turf Hair | 8x8 | 15" |
| 32 Bonaset | 8x8 | 36" |
| 224 Mountain Mint | 8x8 | 15" |
| 864 Little Bluestem | 8x8 | 18" |

Plant List

| | | |
|--------------------------|-----|---------|
| Amelanchier laevis | 8x8 | 6' |
| Cornus caroliniana | 8x8 | 2.5" |
| Celtis occidentalis | 8x8 | 2" |
| Osyrva virginiana | 8x8 | 2.5" |
| Quercus macrocarpa | 8x8 | 2.5" |
| Rhus typhina | 8x8 | 15'-25" |
| Derivilla lonicera | 8x8 | 18" |
| Hypericum kalmianum | 8x8 | 18" |
| Hex verticillata | 8x8 | 15" |
| Viburnum ferrug | 8x8 | 15" |
| Dechampsia cespitosa | 8x8 | 4.5" |
| Schizachyrium scoparium | 8x8 | 18" |
| Sporobolus heterolepis | 8x8 | 15" |
| Asclepias tuberosa | 8x8 | 15" |
| Asclepias tuberosa | 8x8 | 15" |
| Cornus rugosa | 8x8 | 15" |
| Cornus rugosa | 8x8 | 15" |
| Helianthus autumnalis | 8x8 | 24" |
| Physocarpus opulifolius | 8x8 | 18" |
| Schizachyrium scoparium | 8x8 | 18" |
| Sporobolus heterolepis | 8x8 | 15" |
| Fragaria virginiana | 8x8 | 3.5" |
| Calamagrostis canadensis | 8x8 | 2.5" |
| Carex muskingumensis | 8x8 | 2.5" |
| Chelone glabra | 8x8 | 15" |
| Eupatorium perfoliatum | 8x8 | 36" |
| Pycnanthemum virginianum | 8x8 | 15" |
| Schizanthum scapularium | 8x8 | 2.5" |



PARCEL 1
C.S.M. NO. 6527

PARCEL 3
C.S.M. NO. 6527

LOT 1
C.S.M. NO. 7369

Proposed Street Trees
Coordinate With
City of Milwaukee Forestry Department

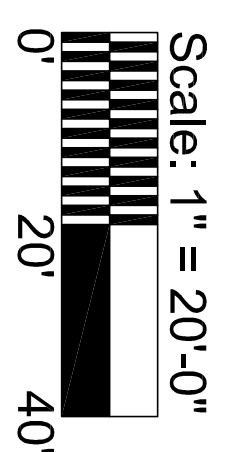


Rob Holly & Chris Miracle
May 19, 2014
May 23, 2014

North Avenue RiverCrest Phase II
North Commerce Street
Milwaukee, WI



www.landworkswisconsin.com
N69W25195 Indiangrass Lane
Sussex, WI 53089
P:262.820.2501



This drawing is made solely for the individual named herein and is the property of Landworks, Inc. Any unauthorized use or duplication is a violation of the copyright laws as subject to production.