

Appendix:

a - e

Appendix: a

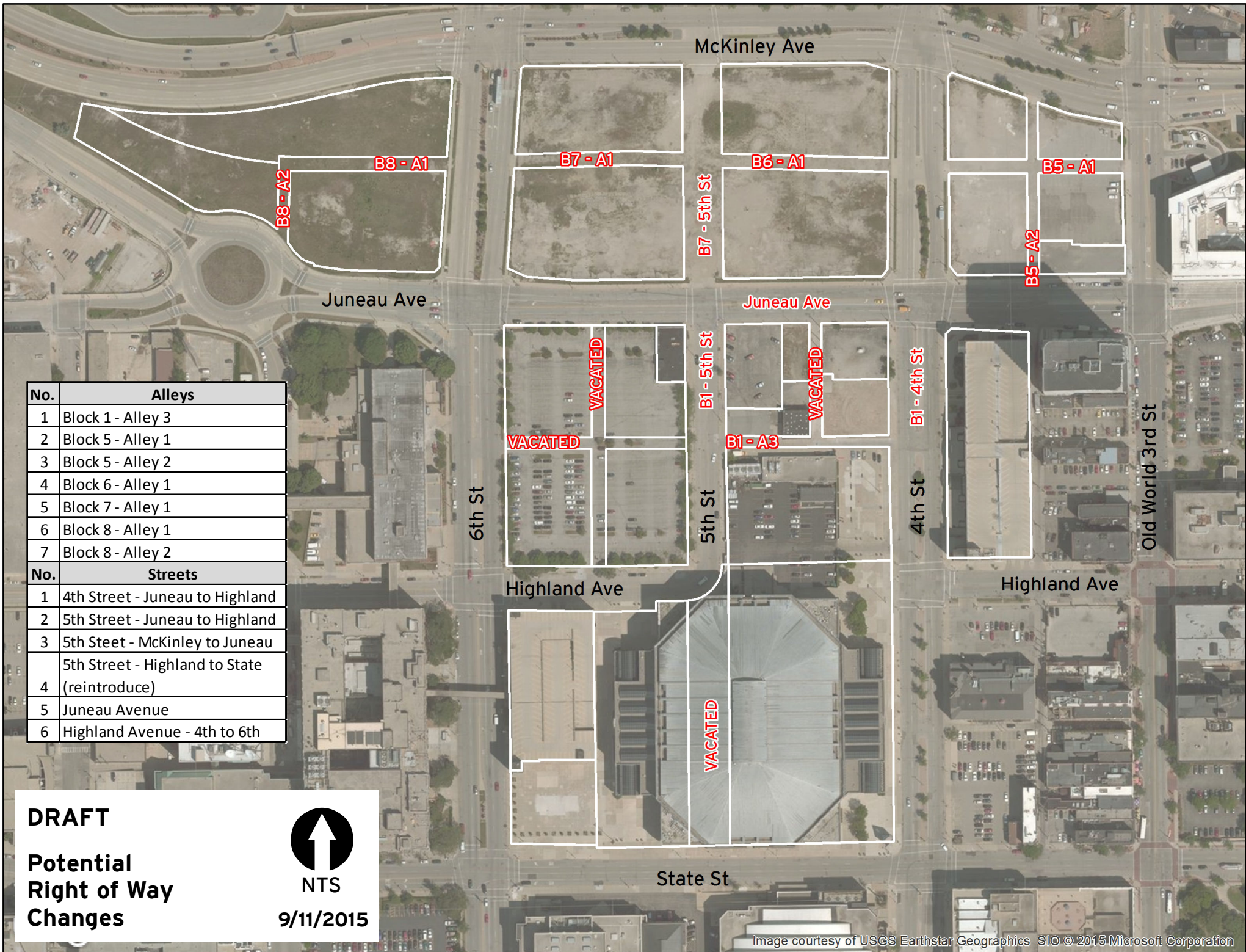
No.	Alleys
1	Block 1 - Alley 3
2	Block 5 - Alley 1
3	Block 5 - Alley 2
4	Block 6 - Alley 1
5	Block 7 - Alley 1
6	Block 8 - Alley 1
7	Block 8 - Alley 2
No.	Streets
1	4th Street - Juneau to Highland
2	5th Street - Juneau to Highland
3	5th Street - McKinley to Juneau
4	5th Street - Highland to State (reintroduce)
5	Juneau Avenue
6	Highland Avenue - 4th to 6th

DRAFT
Potential
Right of Way
Changes

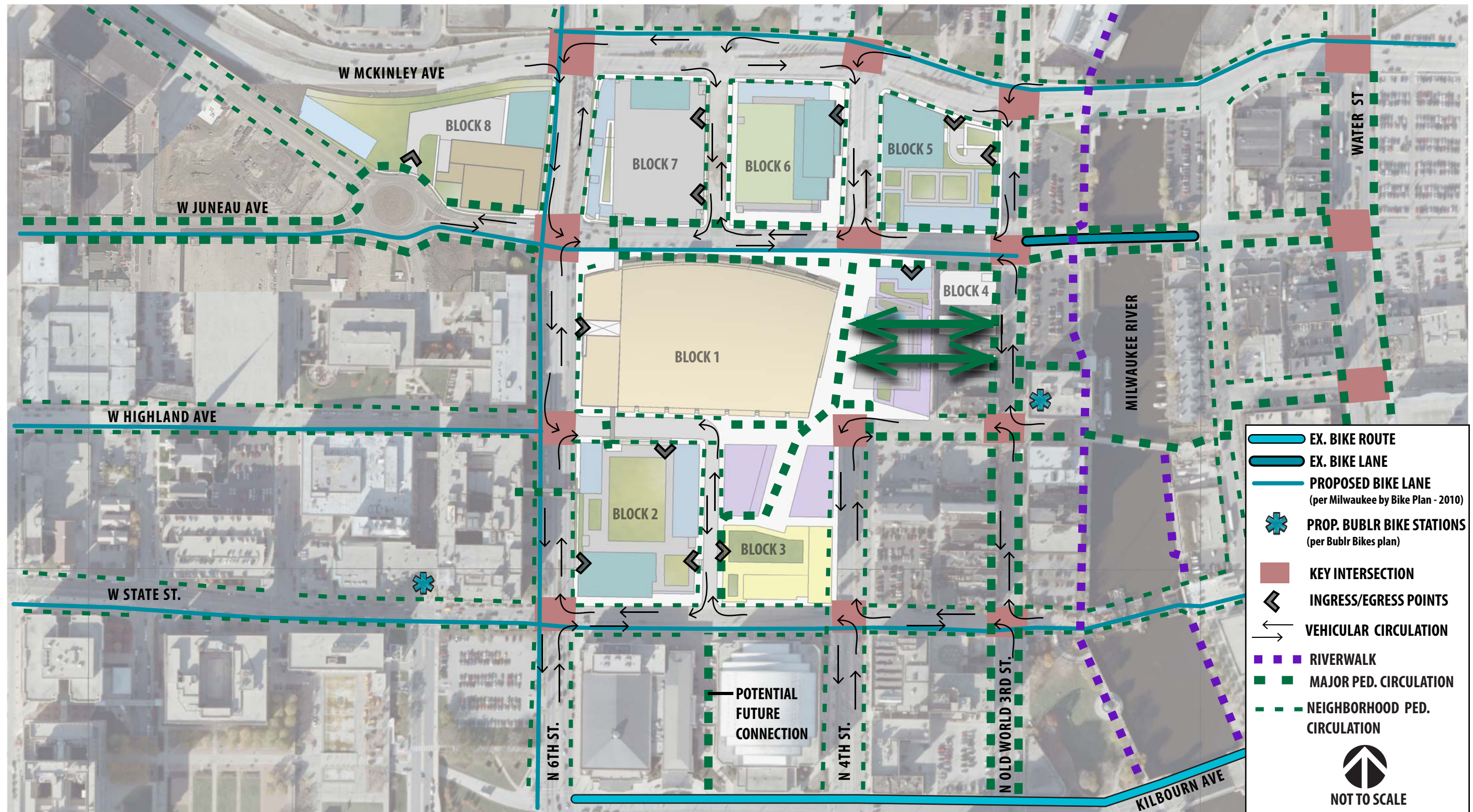


NTS

9/11/2015



Appendix: **b**



BUCKS ARENA DEVELOPMENT

AUTO, BIKE & PEDESTRIAN PATTERNS

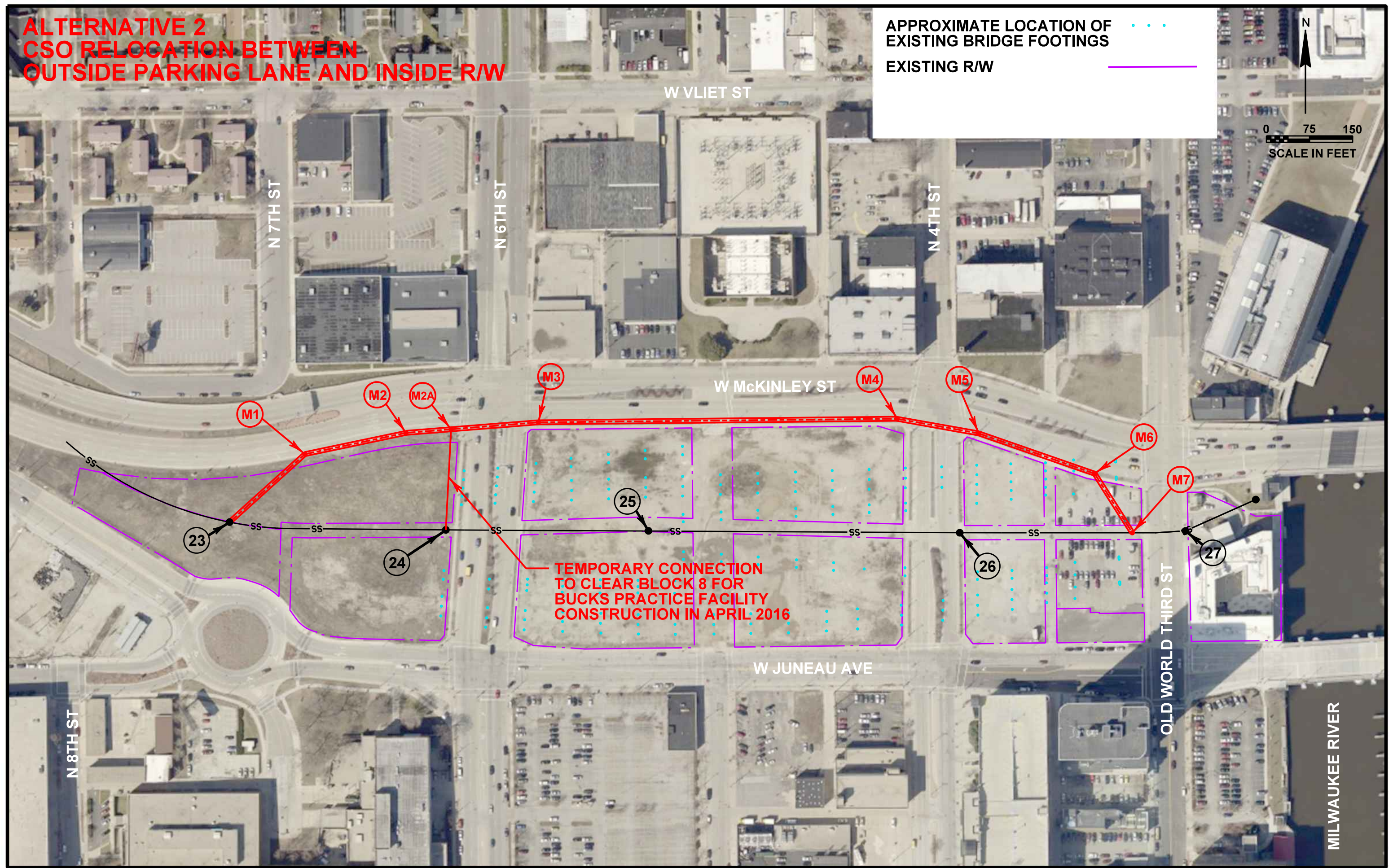


eppstein uhen : architects

Appendix: **c**

**ALTERNATIVE 2
CSO RELOCATION BETWEEN
OUTSIDE PARKING LANE AND INSIDE R/W**

APPROXIMATE LOCATION OF
EXISTING BRIDGE FOOTINGS
EXISTING R/W



**TEMPORARY CONNECTION
TO CLEAR BLOCK 8 FOR
BUCKS PRACTICE FACILITY
CONSTRUCTION IN APRIL 2016**

N 8TH ST

N 7TH ST

N 6TH ST

N 4TH ST

W VLIET ST

W MCKINLEY ST

W JUNEAU AVE

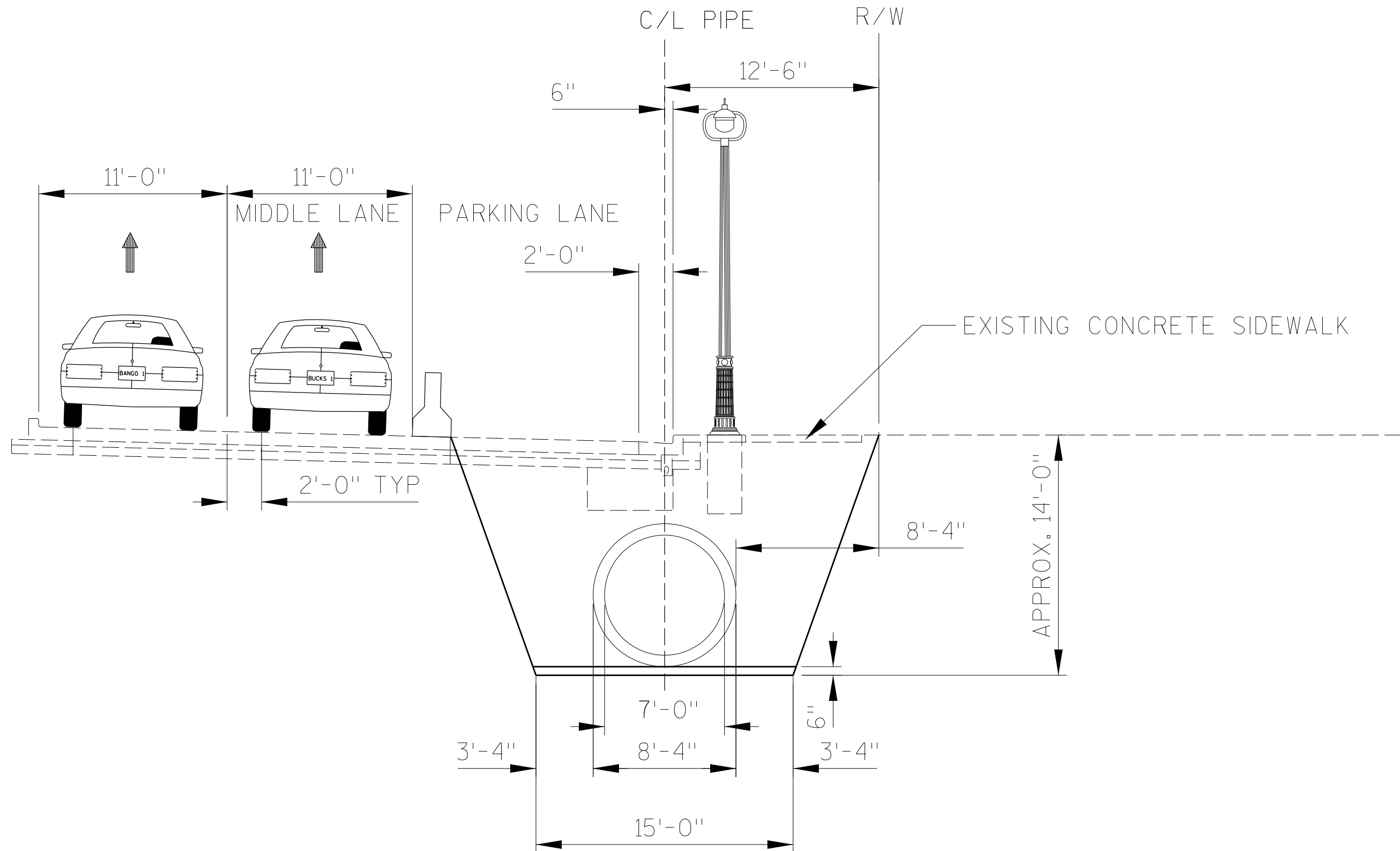
OLD WORLD THIRD ST

MILWAUKEE RIVER

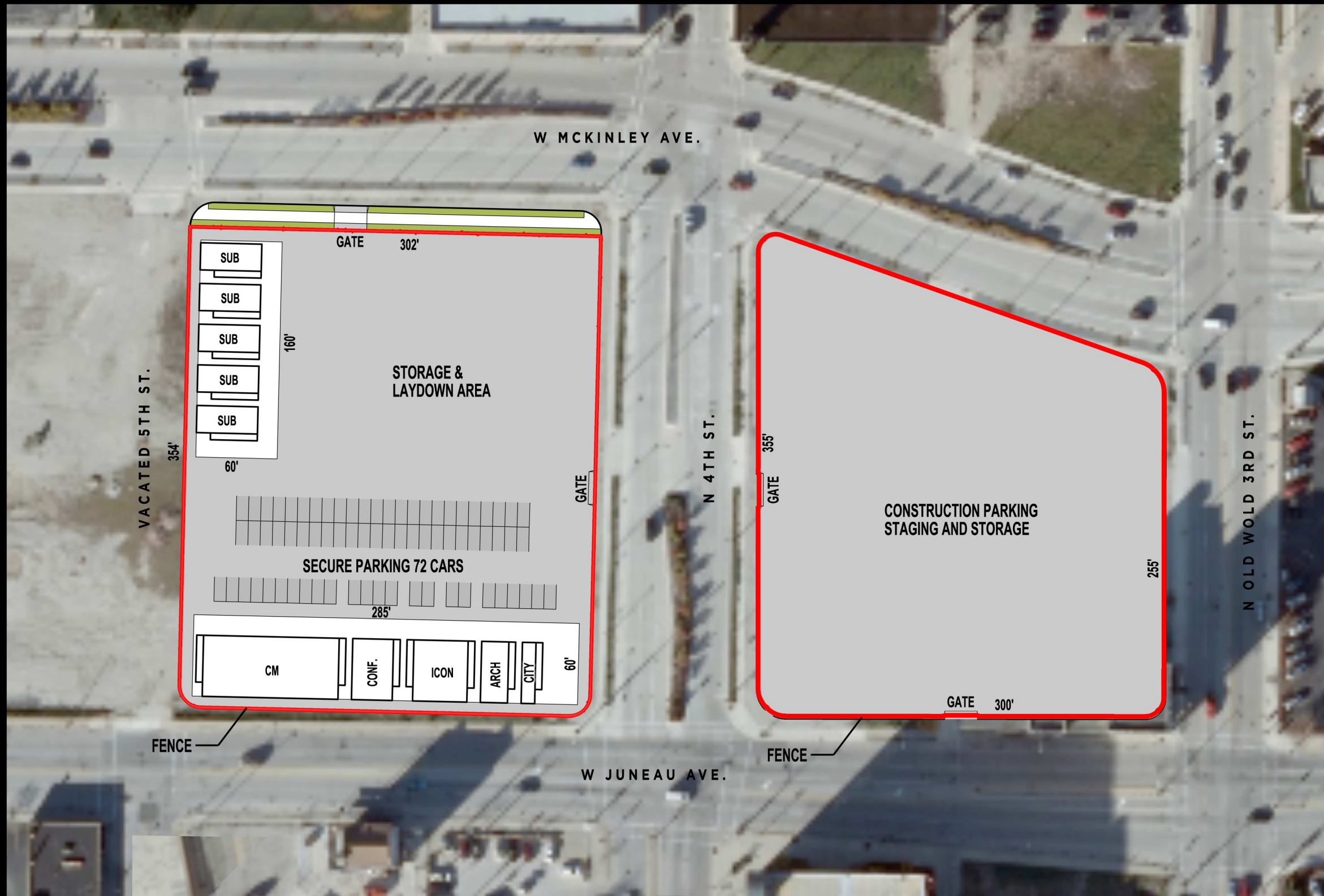
ALTERNATIVE 2

CSO RELOCATION BETWEEN

OUTSIDE PARKING LANE AND INSIDE R/W



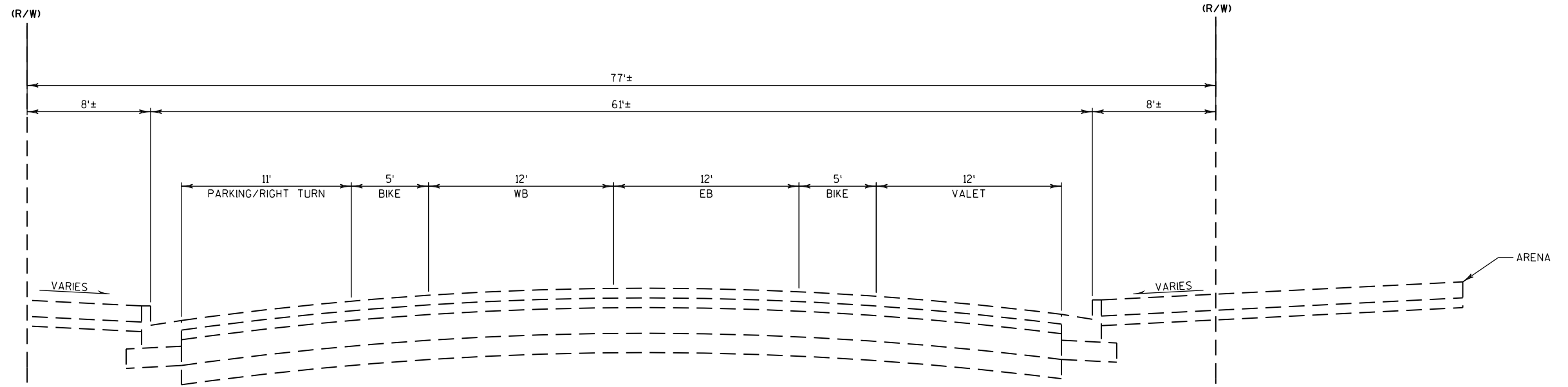
Appendix: d



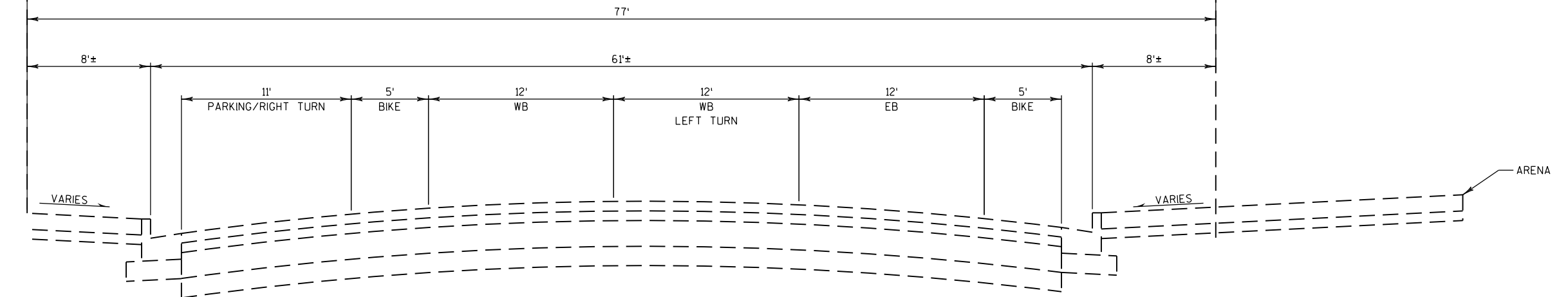
TEMPORARY TRAILER COMPLEX LAYOUT



Appendix: e



TYPICAL SECTION
 W. JUNEAU AVE.
 5TH ST. - 4TH ST.
 (FACING EAST)



TYPICAL SECTION
 W. JUNEAU AVE.
 6TH ST. - 5TH ST.
 (FACING EAST)



