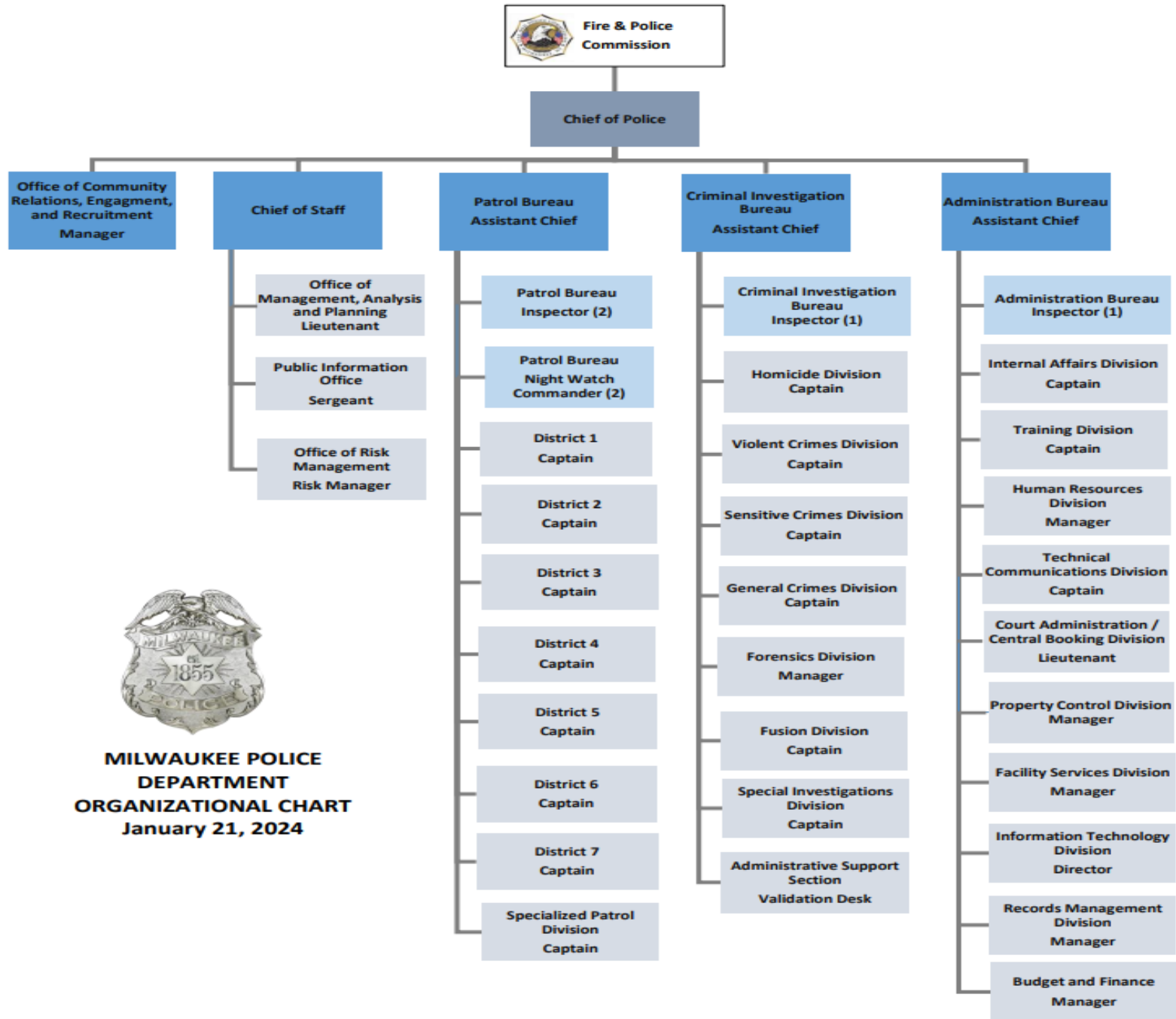




The Milwaukee Police Department

Deployment of Sworn Officers: Common Council File 240886

August 2025 update



Executive Command Staff	Sworn Number	Limited Duty
Police Officer	11	
Sergeant	3	
Admin Lieutenant	1	
Detective	1	
Captain	2	
Inspector	6	
Assistant Chief	3	
Chief	1	
TOTAL	29	

All numbers and assignments are as of August 15 of 2025

ECS includes OCOE and LIU SGT

(68 in recruit section – Class to graduate 10/10 another started 8/4; 10 off payroll (i.e., military leave)

Total sworn as of August 2025: 1624

Chief of Staff
15 Sworn

OMAP	Sworn Number	Limited Duty
Police Officer	5	
Lieutenant	1	
TOTAL	6	

Compliance	Sworn Number	Limited Duty
Police Officer	6	
Sergeant	2	
Lieutenant	1	
TOTAL	9	

Admin Bureau
163 Sworn

HR	Sworn
Police Officer	1
Sergeant	1
TOTAL	2

IT	Sworn
Police Officer	3
Lieutenant	1
TOTAL	4

Internal Affairs	Sworn
Police Officer	4
Detective	5
Sergeant	8
Lieutenant	3
Captain	1
TOTAL	21

Property	Sworn
Police Officer	10
Sergeant	1
Lieutenant	1
TOTAL	12

Facilities	Sworn
Police Officer	1
TOTAL	1

CART	Sworn
Police Officer	5
Police Sergeant	1
TOTAL	6

Court Admin	Sworn
Police Officer	31
Detective	2
Police Sergeant	3
Court Liaison Officer	
TOTAL	36

TechComm	Sworn
Sergeant	3
Lieutenant	1
TOTAL	4

Academy	Sworn
Police Officer	20
Detective	1
Sergeant	5
Lieutenant	1
Captain	1
TOTAL	28

Open Records	Sworn
Police Officer	16
Sergeant	1
Lieutenant	1
TOTAL	18

Central Booking	Sworn
Police Officer	22
Sergeant	8
Lieutenant	1
TOTAL	31

D1 (includes RNC team)	Sworn	LD
Police Officer	78	
Detective	1	
Sergeant	16	
Lieutenant	4	
Captain	1	
Total	100	

D2	Sworn	LD
Police Officer	108	
Sergeant	17	
Lieutenant	3	
Captain	1	
TOTAL	129	

D3	Sworn	LD
Police Officer	118	
Sergeant	18	
Lieutenant	3	
Captain	1	
TOTAL	140	

D4	Sworn	LD
Police Officer	113	
Sergeant	18	
Lieutenant	3	
Captain	1	
TOTAL	135	

D5	Sworn	LD
Police Officer	123	
Sergeant	16	
Lieutenant	3	
Captain	1	
TOTAL	143	

D6	Sworn	LD
Police Officer	74	
Sergeant	17	
Lieutenant	3	
Captain	1	
TOTAL	95	

D7	Sworn	LD
Police Officer	125	
Sergeant	19	
Lieutenant	3	
Captain	1	
TOTAL	148	

SPD	Sworn	LD
Police Officer	142	
Sergeant	15	
Lieutenant	3	
Captain	1	
TOTAL	161	

Patrol Bureau
1,051 Sworn (881 Police Officers - 739 Patrol, 142 SPD)

Criminal Investigation Bureau
288 Sworn

Sensitive Crimes	Sworn
Police Officer	6
Detective	20
Sergeant	5
Lieutenant	2
Captain	1
TOTAL	34

Fusion	Sworn
Police Officer	22
Detective	8
Sergeant	1
Lieutenant	2
Captain	1
TOTAL	34

HIDTA	Sworn
Police Officer	17
Detective	1
Sergeant	2
Lieutenant	1
TOTAL	21

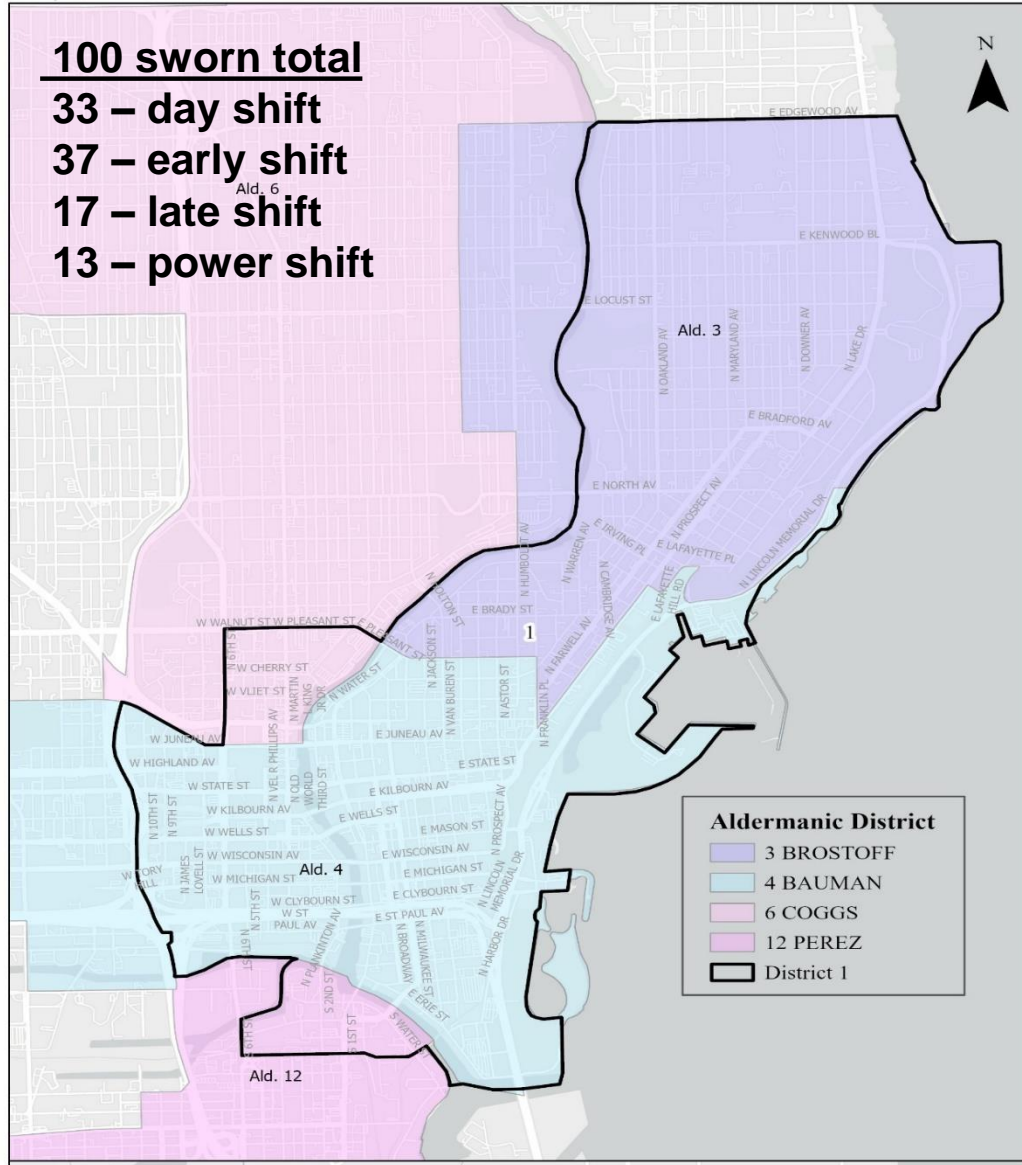
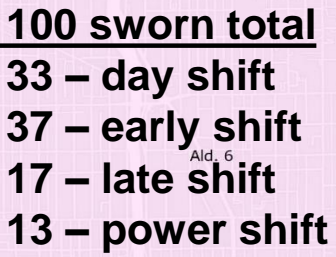
Forensics	Sworn
Police Officer	4
Sergeant	1
Latent Print Ex	3
Chief Latent	1
FI	12
TOTAL	21

Gun Violence	Sworn
Police Officer	1
Detective	36
Sergeant	7
Lieutenant	3
Captain	1
TOTAL	48

Homicide	Sworn
Police Officer	1
Detective	37
Sergeant	6
Lieutenant	3
Captain	1
TOTAL	48

SID	Sworn
Police Officer	31
Detective	7
Sergeant	4
Lieutenant	2
Captain	1
TOTAL	45

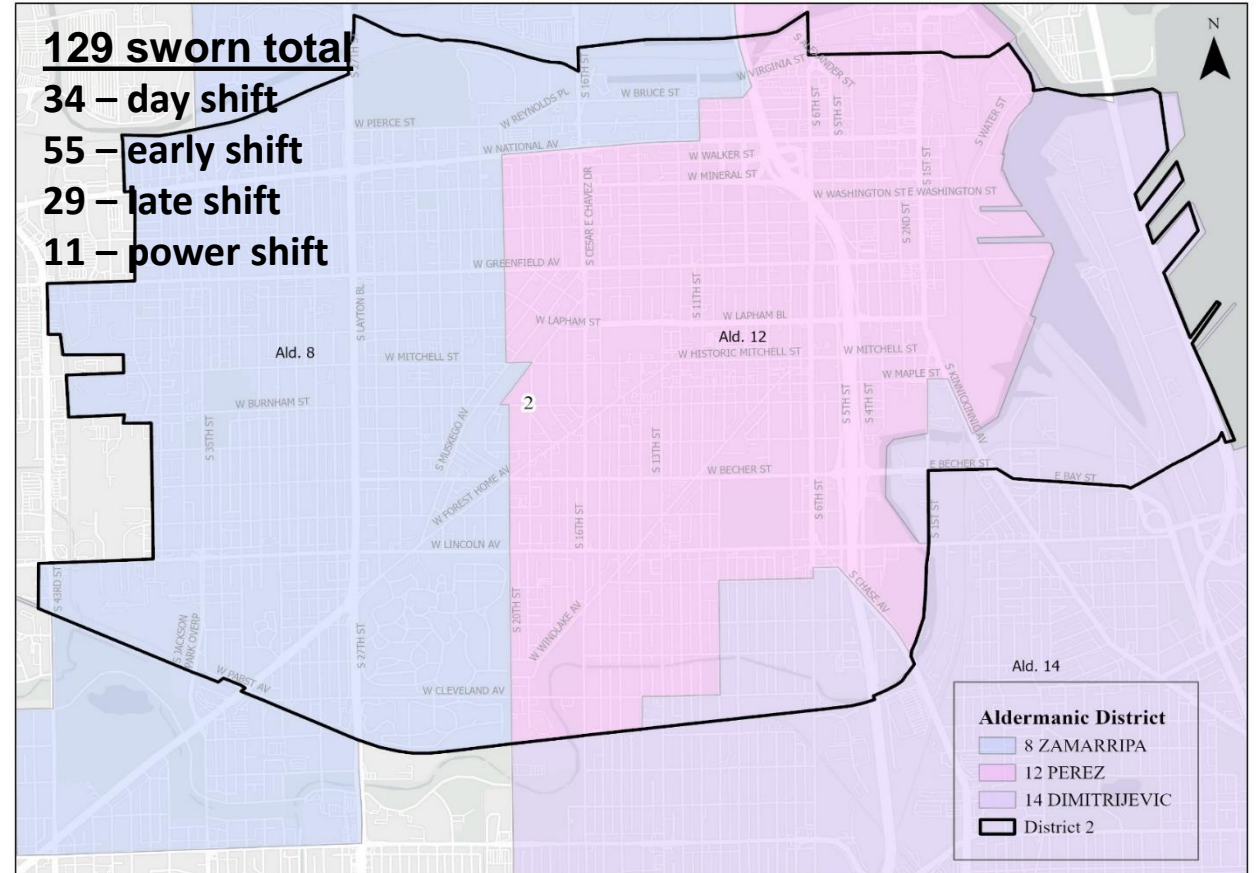
Major Crimes	Sworn
Detective	29
Sergeant	5
Lieutenant	3
Captain	
TOTAL	37



Milwaukee Police Department
Aldermanic Districts - District 2



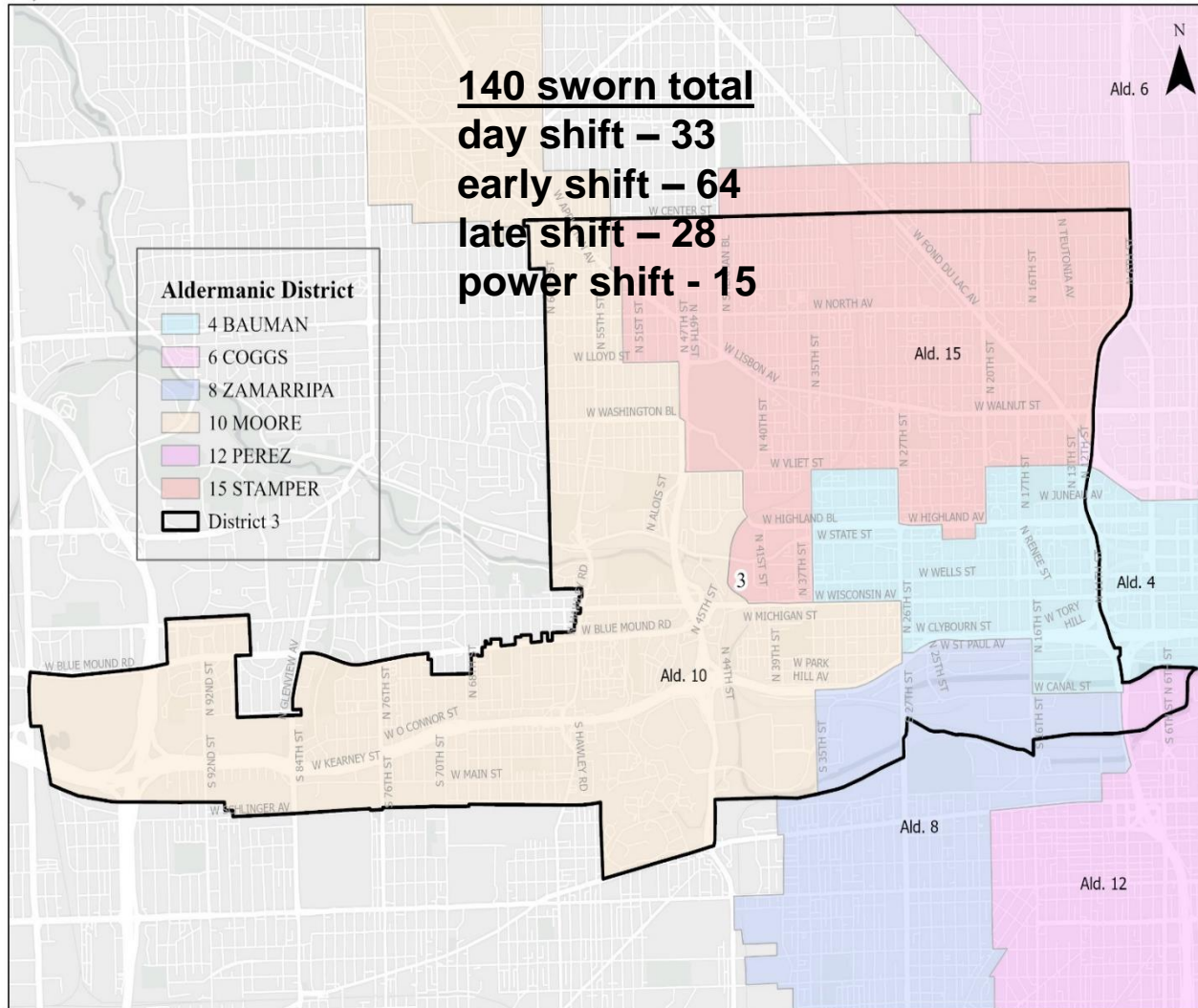
129 sworn total
34 – day shift
55 – early shift
29 – late shift
11 – power shift



Aldermanic district boundaries redrawn on April 17, 2024 due to U.S Census redistricting.



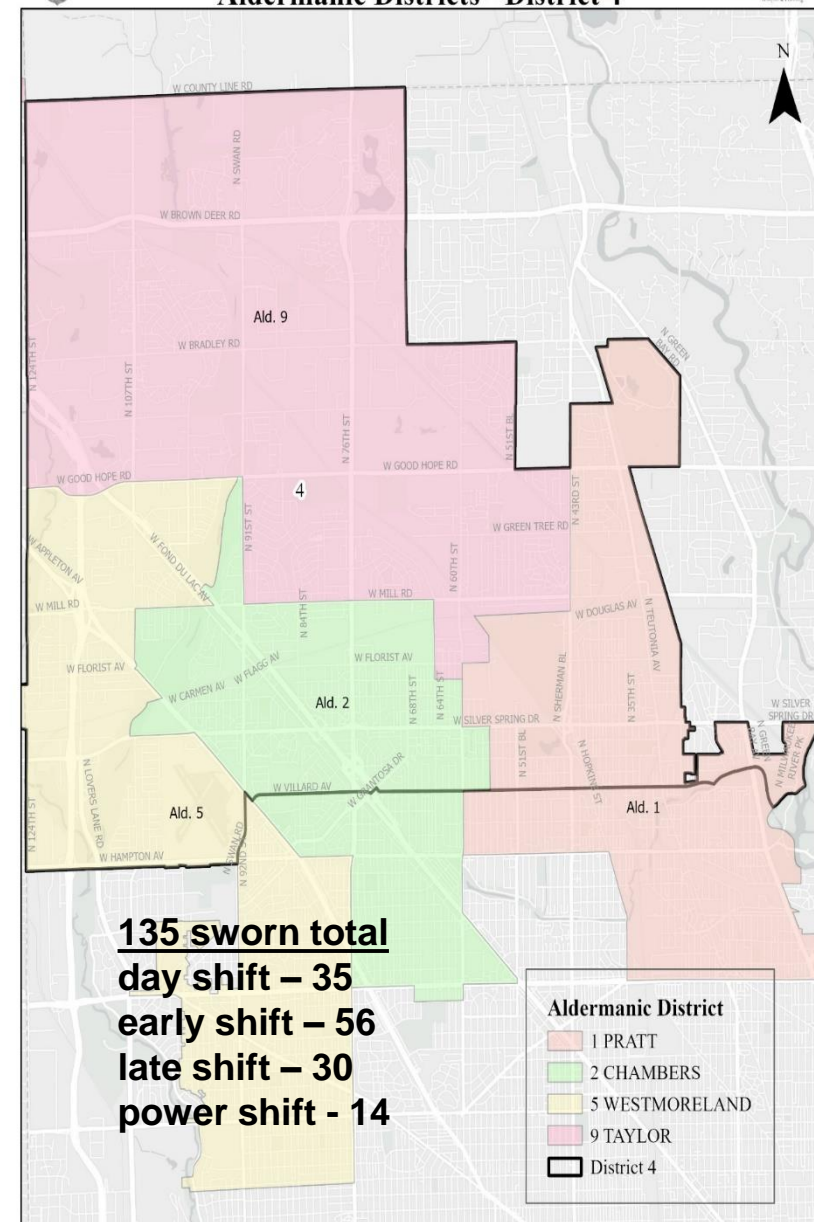
Milwaukee Police Department
Aldermanic Districts - District 3



Aldermanic district boundaries redrawn on April 17, 2024 due to U.S Census redistricting.



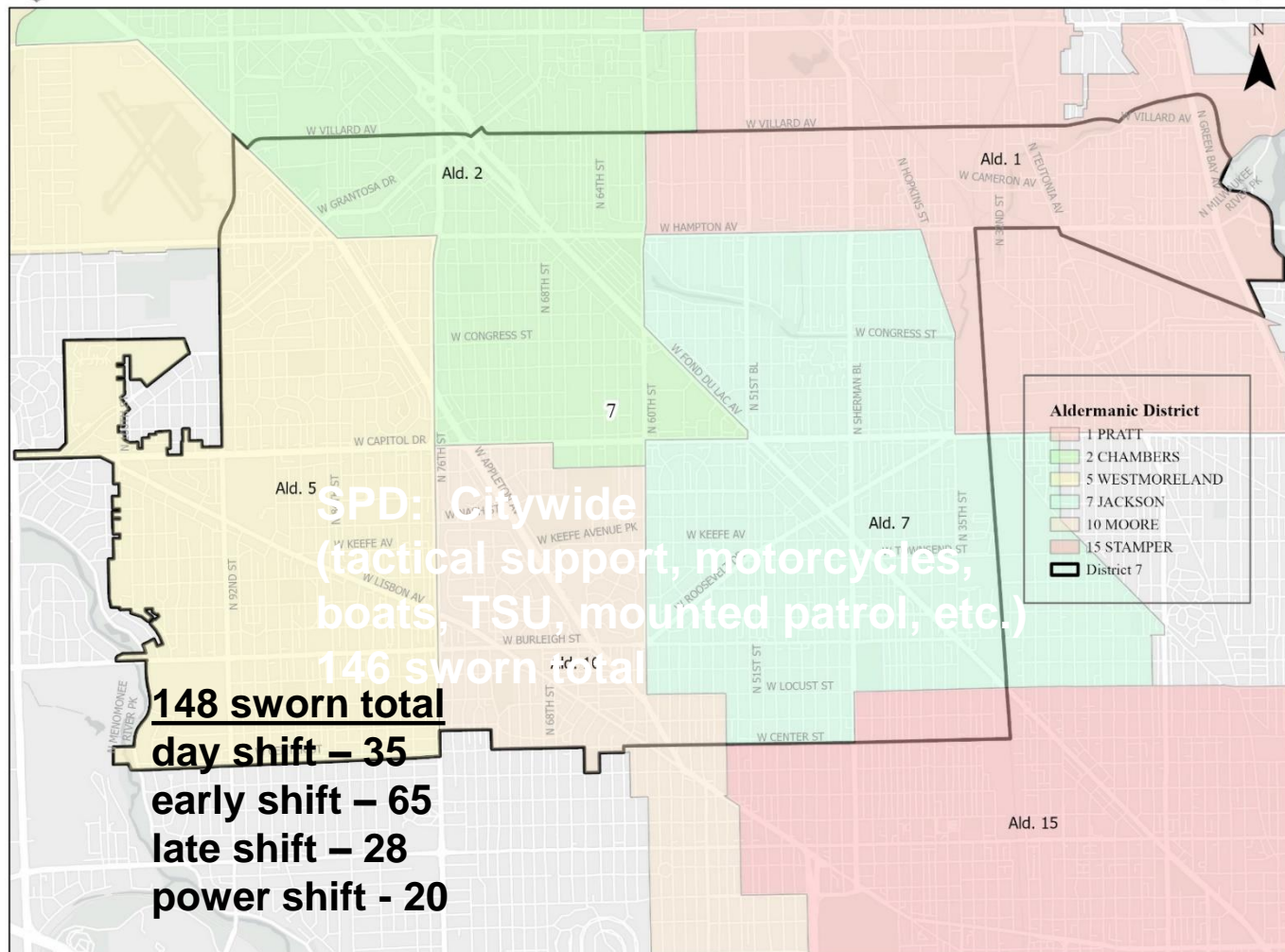
Milwaukee Police Department
Aldermanic Districts - District 4



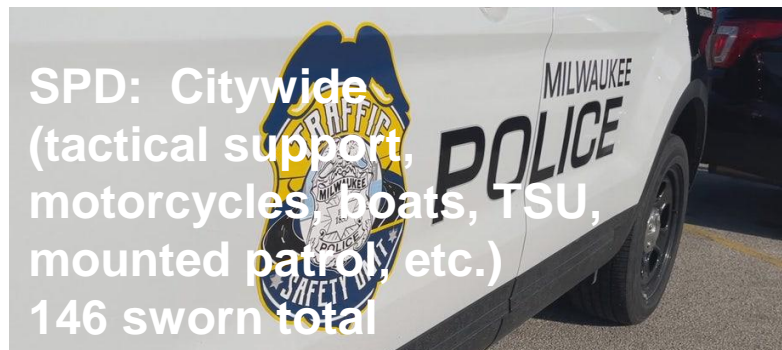
Aldermanic district boundaries redrawn on April 17, 2024 due to U.S Census redistricting.



Milwaukee Police Department Aldermanic Districts - District 7



Aldermanic district boundaries redrawn on April 17, 2024 due to U.S Census redistricting.



MPD currently has a total of **56 sworn members** on limited duty for injuries that occurred while **off-duty**.

Off-Duty Limited Duty Breakdown per Bureau (total officers/%):

Patrol=17, 30% (All 7 districts and SPD)

CIB=13, 23% (CIB, Fusion, IMD and SCD)

Admin=22, 40% (Court Admin, Central Booking, HR, IT, IAD, Property Control and Open Records)

Office of the Chief=4, 7% (OMAP and Compliance Management Section)

Total: 56/100%

MPD currently has a total of **29 sworn members** on limited duty for injuries that occurred while **on duty** and of those 29; **12 are permanent limited duty**.

On-Duty Limited Duty Breakdown per Division (total officers/%):

- Patrol=11, 33% (All 7 districts and SPD)
- CIB=5, 17% (CIB, Fusion, IMD and SID)
- Admin=12, 40% (Academy, IAD, Central Booking, Court Admin and Open Records)
- Office of the Chief=1, 10% (Compliance Management Section)

Total: 29/100%

NOTE: Regarding the 12 members (11 officers, 1 supervisor) that are permanent limited duty, the breakdown of where they are assigned by bureau is as follows:

- CIB=2, 17%
- Admin=7, 58%
- Office of the Chief=3, 25%

Summary:

Total number of limited duty=85

Total number of sworn=1624

Percentage of total sworn that are limited duty status=5.2%