

Existing facade to be renovated

Eyebrow to be removed

Walk up window location



Existing Streetscape (Eastside of Downer Ave)

View 1

Existing Parking Lot to be converted to patio

Drive thru canopy to be removed

Remove existing pole and sign



Existing Site Aerial

N



Streetscape Westside of Downer



View 2 South



View 2 North



Streetscape Northside of Park St.



View 4 West



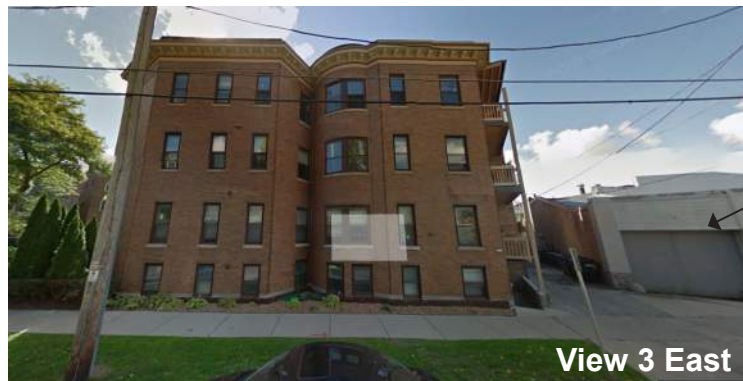
View 4 East



Existing Site Aerial



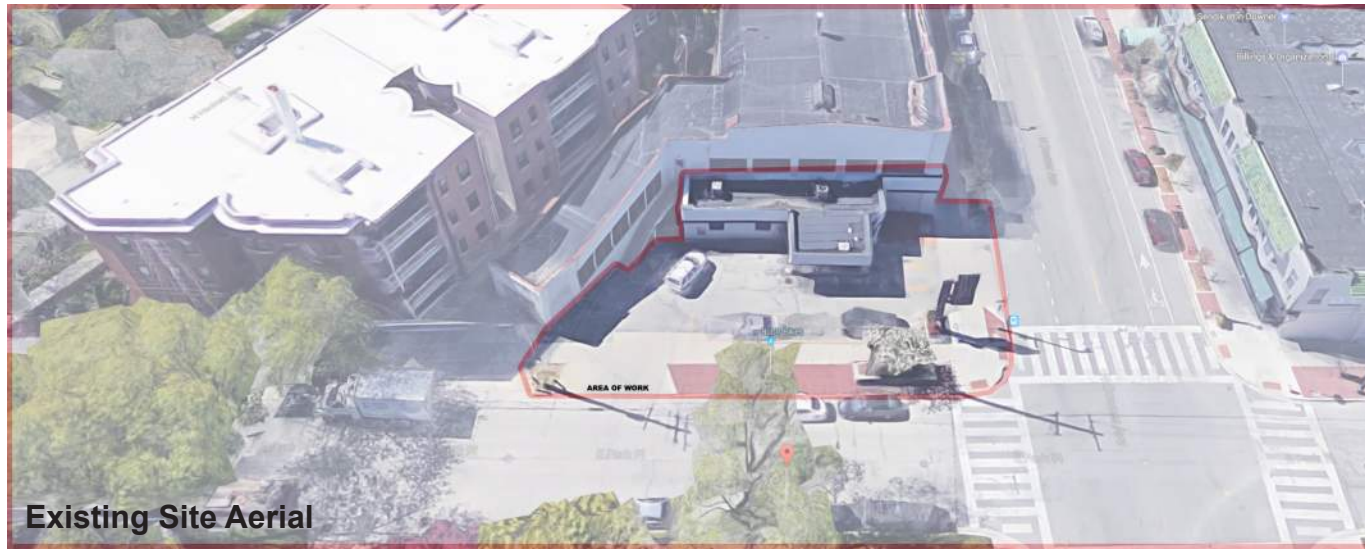
Streetscape Southside of Park St.



View 3 East

Edge of site





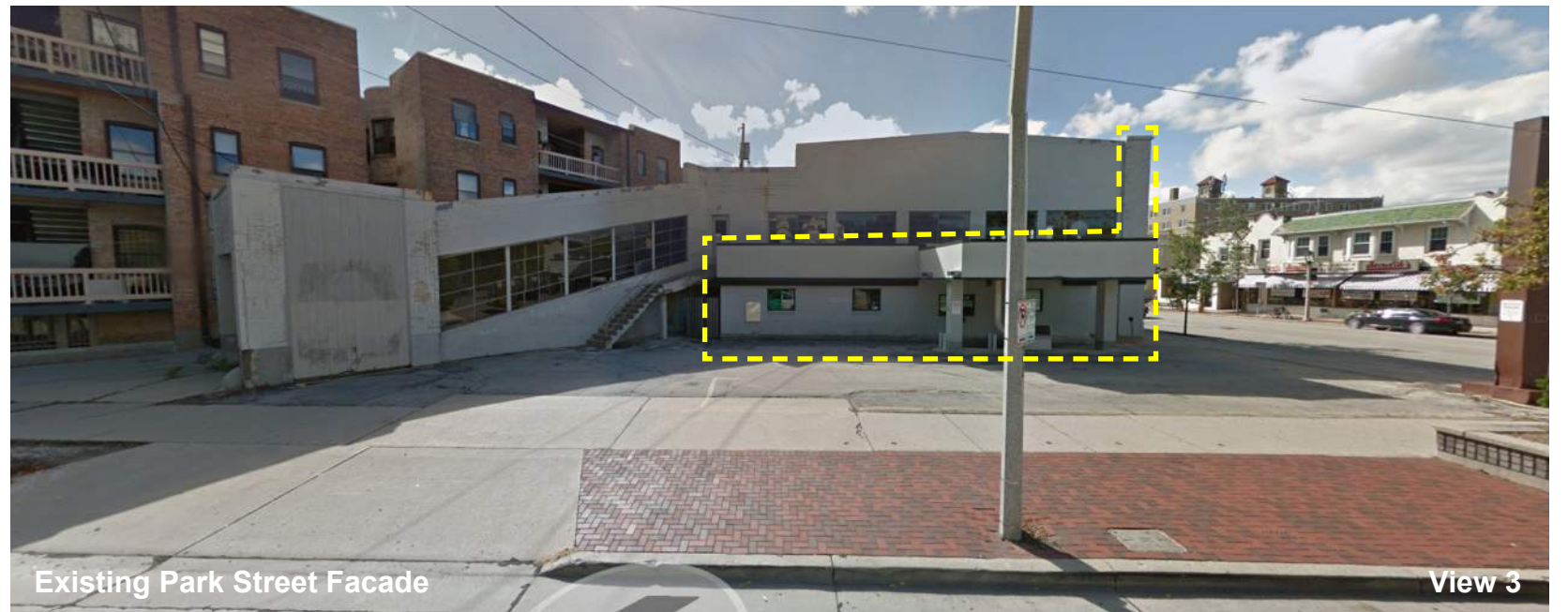
Existing Site Aerial



Existing Downer Street Facade



Existing Site Aerial



Existing Park Street Facade

View 3



New Entrance Location



New Walk Up Window Location



Eye brow and Drive Thru to be Removed



Eye brow and Drive Thru to be Removed



Existing Building Photos







Aerial



Looking Northeast

EXTERIOR PERSPECTIVES - SEE ELEVATIONS FOR MORE DETAILS







**Site Plan / Floor Plan**

1/16" = 1'-0"





**Downer Ave Elevation**

3/32" = 1'-0"



**Park St Elevation**

3/32" = 1'-0"

NOTE: All building heights and roof lines to remain unchanged,







Pendant Light



Edison String Lights



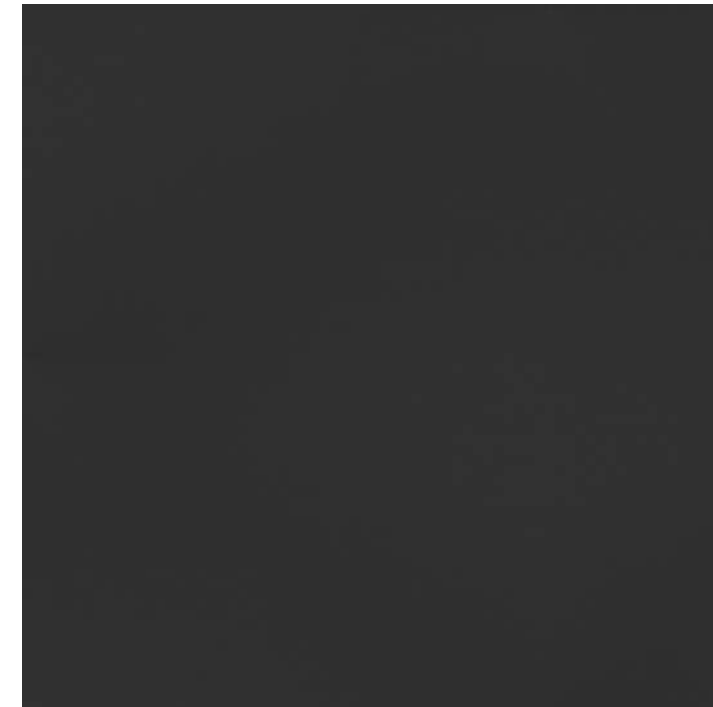
Step Lights



Board Formed Concrete (bottom half)  
Cedar Wood (top half)



Painted Brick (color representative)



Metal and Window/Door Finish Color