

MILWAUKEE COMMUNITY BASED PROSECUTION

Problem Solving Through Collaboration For Community Safety



CPU Definition and Principles

DEFINITION

Community Prosecution is a philosophy that encourages government agencies, community based organizations, private businesses, and neighborhood residents to work collaboratively to create safer neighborhoods and enhance the quality of life.

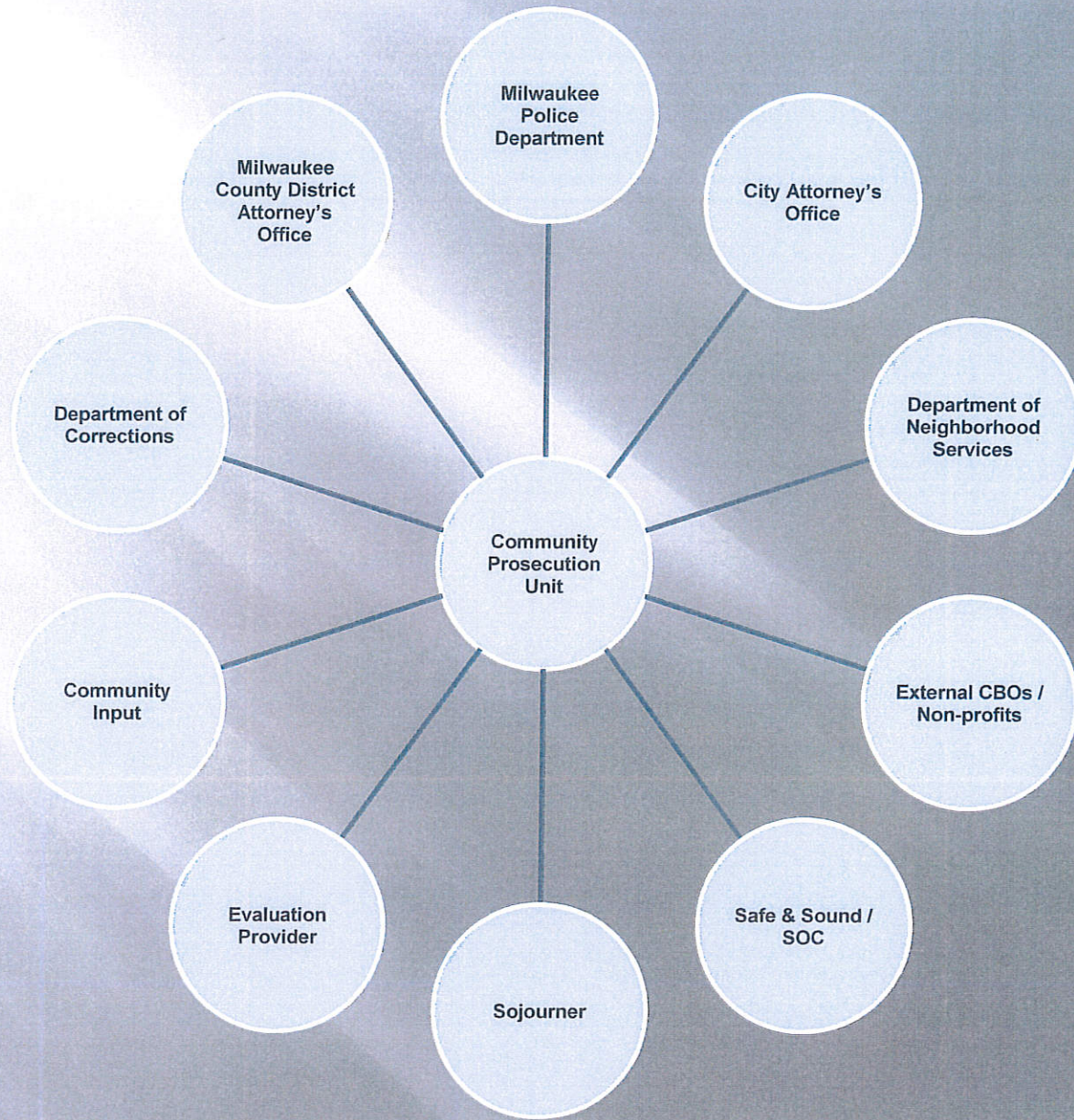
4 CORE PRINCIPLES

- Recognize the Community's Role in Public Safety
- Engage in Problem Solving
 - Place-based
 - Person-based
 - Collective Efficacy
- Establish and Maintain Partnerships
- Evaluate the Outcomes of Activities

➤ **Target Team/Neighborhood Safety Team (NST)**

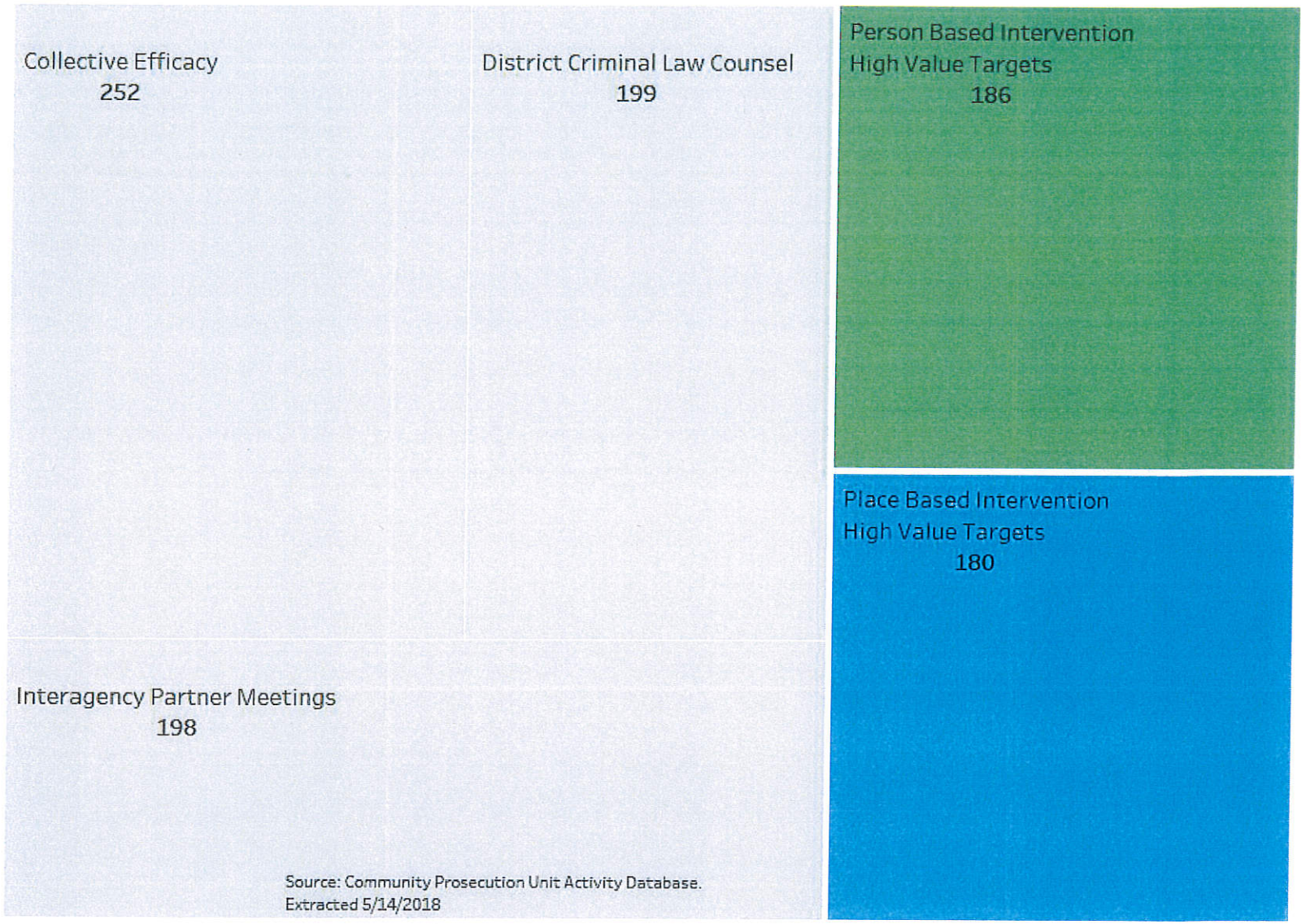
- District Captain and Community Prosecutor shall manage the NST activities
 - CPUC shall act as the administrative coordinator for the NST
 - CPU line level representatives
- Regular and structured meetings (i.e., generally consistent set of agenda items discussed on a weekly or bi-weekly basis; min. monthly)
- Strategically address problematic people and places
- Action requires attention of two or more agencies

NSTs



Overall: District 2,4,5 CPU
Reported from 2017 to Q1 2018

- Person Based Intervention
- Place Based Intervention



Source: Community Prosecution Unit Activity Database.
Extracted 5/14/2018

MPD District #2

CPU 2017/18 Notable Accomplishments

Place Based Initiatives

- **Golden Domes Apartments -1620 S. 6th Street & Multi-Unit Apartment - 3615 W. National Avenue**
 - Citizen complaints of panhandlers trespassing into the locked apartment building loitering, drugs etc.
 - CPU met with property management and security, conducted walk-thrus, prolific offenders were identified.
 - Arrest of prolific offenders which resulted in offenders being charged with Criminal Trespass and Bail Jumping with No Contact Orders. Offenders not observed in area thereafter.
- **McDonald's - 2520 W. National Avenue**
 - Designated a nuisance property by CAO due to the many calls for prostitution, drugs, panhandling, etc.
 - Meeting with McDonald's Corporate was held to discuss the issues at the location.
 - Community Prosecutor, Assistant City Attorney and CPU officers conducted CPTED)site survey at the location. CPU recommendations were implemented (extra security, limit Wi-Fi access, change in location to UBER eats register, monitor bathroom access) thus resulting in a drastic decrease in the number of calls for service.

Person Based Initiatives

- **Joel Rivera**
 - Offender and co-actors participated in a spree of violent business armed robberies in Districts #2, #6 and #5. All actors were identified. The CP worked with detectives from the Robbery Task Force to issue multiple armed robbery charges against the actors and main offender ultimately received 36 years of federal incarceration.
- **Jose Perdomo**
 - Offender responsible for a string of business burglaries along W. Lincoln Avenue. CP able to work with officers to issue a total of 14 counts of Burglary and the defendant who was sentenced to 10 plus years in prison.
- **Kenyon Taylor**
 - CPU received complaints of drug use/sales and prostitution activity at a multi-use building (rooming house and tavern). CPU was able to respond with DNS Inspectors when they encountered offender and co-actors. Co-actors stated that offender was often in the building though he did not live there and was selling drugs and was in possession of a firearm/drugs. Tenants were evicted.
 - Community Prosecutor issued charges of Possession of Firearm by a Felon and Felony Bail Jumping for the offender who was in bench warrant status for an open felony drug case.

Ann Lopez: District 2 CPU
Reported from 2017 to Q1 2018

- Person Based Intervention
- Place Based Intervention

Interagency Partner Meetings
114

District
Criminal Law
Counsel
30

Person Based
Intervention
High Value Targets
36

Collective Efficacy
44

Place Based
Intervention
High Value Targets
8

Source: Community Prosecution Unit Activity Database.
Extracted 5/14/2018

MPD District #5

CPU 2017/18 Notable Accomplishments

☐ Place Based Initiatives

☐ **River's Shore Comprehensive Treatment Center - 3707 N Richards St**

- CPU received complaints from multiple businesses on E Capitol Dr. about people receiving treatment at the center engaging in nuisance activity (panhandling, loitering, using drugs, and disorderly conduct).
- CPU toured center and made multiple site visits to McDonald's.
- CPU and Riverworks had series of meetings with the clinic and the McDonald's on E Capitol Dr. to discuss ways to abate nuisance activity and identify repeat offenders.
- CPU has seen dramatic decrease in similar complaints since initiative.

☐ **Magic Foods - 2879 N 16th St**

- Corner store in North Division neighborhood that experienced chronic loitering, drugs, and shootings.
- CPU met with residents in neighborhood & then with landlord of store and house next to it associated with people involved in loitering and drug dealing at store.
- CPU did CPTED site survey at store, which implemented most of suggestions, including installing LED lighting and remodeling main entrance to allow sightlines in and out of store. Working with store on city façade and signage grants to allow it to implement additional suggested changes.
- According to store and residents, nuisance activity has dropped dramatically.

☐ Person Based Initiatives

☐ **Ronald Ziedman**

- Offender was chronic problem person in District 5, engaging in mostly low-level activity (disorderly conduct, violation of harassment injunction) at the N MLK Dr. Walgreens, and for escape/ resisting arrest after running from officers at D5 following his arrest.
- Community Prosecutor learned that offender has serious mental health issues and referred a series of criminal cases to a specialized Mental Health Treatment Court which he successfully completed May 11.

☐ **Daron May**

- Resident complaints of noise, fights, shots fired at house rented by May.

☐ (offender known in D7 for illegal after sets - double homicide and multiple shootings at these parties resulted in city taking house in D7).

- CPU conducted knock and talk with May & met with landlord.
- Landlord gave offender warning, then eventually evicted him after continued calls.
- Community Prosecutor worked with CPT Heier and charged child abuse and strangulation case against May and subsequent charges of OWI/threat to law enforcement/bail jumping.
- Offender recently sentenced to jail/probation in OWI case. Supervised by D5 DOC agent.

☐ **Kendrae Buie**

- Offender involved in aggravated carjacking in Rufus King neighborhood, involving victim who was parking his car at his home in middle of day.
- Community Prosecutor brought case against offender, who was sentenced to 23 years in prison.

Jeremy Arn: District 5 CPU
Reported from 2017 to Q1 2018

- Person Based Intervention
- Place Based Intervention



Source: Community Prosecution Unit Activity Database.
Extracted 5/14/2018

Dax Odom: District 4 CPU
Reported from 2017 to January 2018

■ Person Based Intervention
■ Place Based Intervention

District Criminal Law Counsel
75

Collective Efficacy
56

Person Based Intervention
High Value Targets
71

Interagency Partner Meetings
43

Place Based Intervention
High Value Targets
30

Source: Community Prosecution Unit Activity Database.
Extracted 5/14/2018