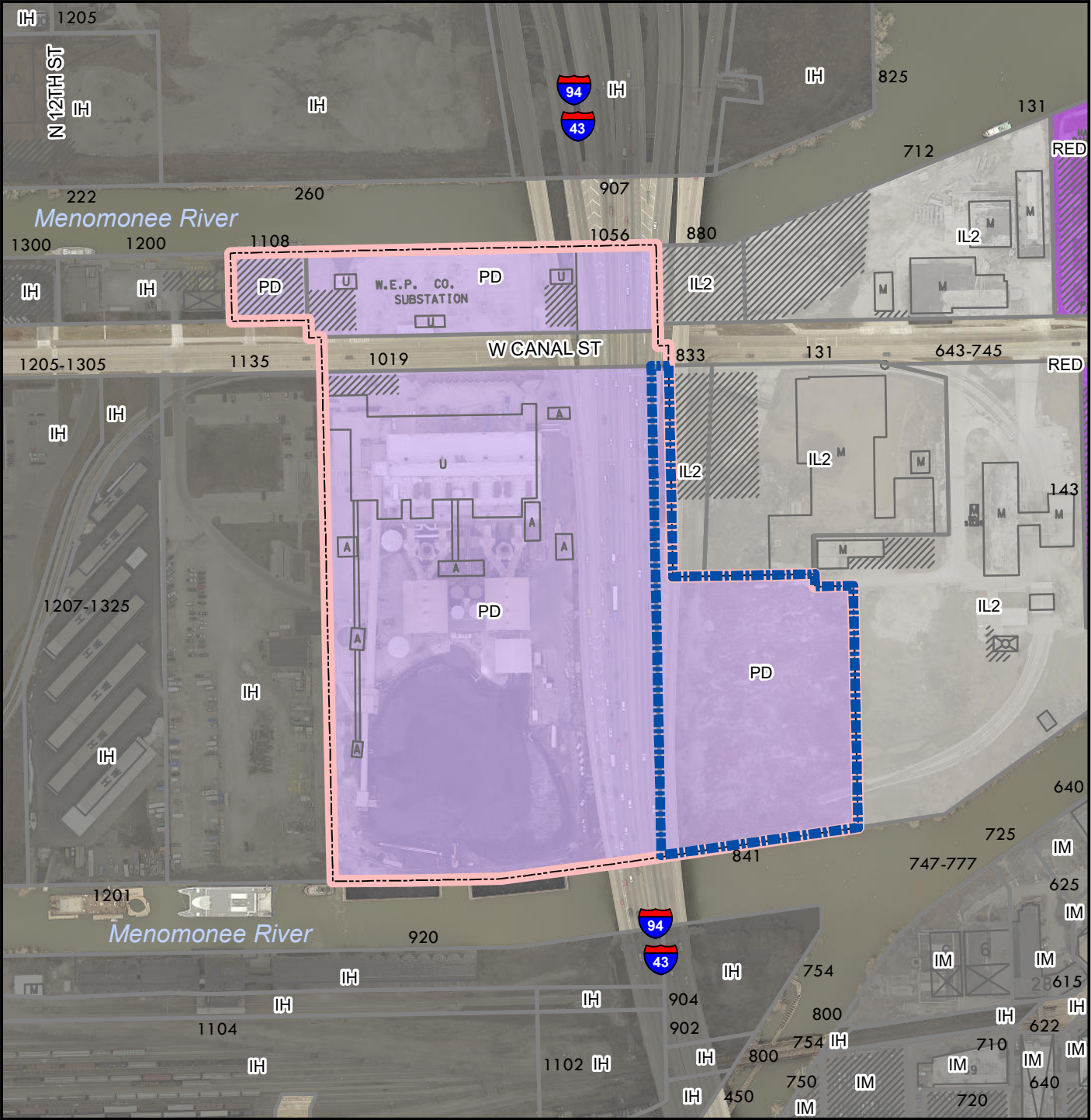


**File No. 211866**  
**2nd Amend. to DPD - Valley Power Plant**  
**& Rezone 841 W. Canal from DPD to IL2**



**Legend**

- 841 W. Canal St
- Detailed Planned Development Boundary (DPD)

**Zoning**

- Unknown or pending zone

**Zoning Category**

- Residential - single family
- Residential - two family
- Residential - multi-family
- Residential - residence and office
- Central business district - civic activity
- Central business district - high-density residential
- Central business district - major retail
- Central business district - mixed activity
- Central business district - neighborhood retail
- Central business district - office and service
- Central business district - residential and specialty use
- Central business district - warehousing and light manufacturing
- Commercial - neighborhood shopping
- Commercial - local business
- Commercial - commercial service
- Commercial - regional business
- Industrial - commercial
- Industrial - office
- Industrial - light
- Industrial - mixed
- Industrial - heavy
- Special - parks
- Special - institutional
- Special - planned development
- Special - redevelopment district

N

