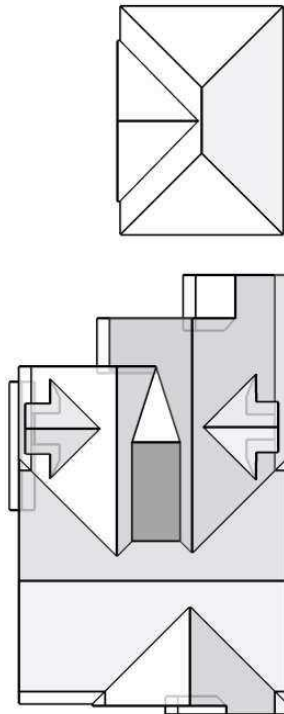


2611 N Wahl Ave, Milwaukee, WI 53211-3826



In this 3D model, facets appear as semi-transparent to reveal overhangs.

Report Details

Report:17611981

Property Details

Longitude = -87.8735019
Latitude = 43.0644388
Number of Stories > 1

Report Contents

Images1
Notes Diagram4

Online map of property
http://maps.google.com/maps?f=q&source=s_q&hl=en&geocode=&q=2611+N+Wahl+Ave,Milwaukee,WI,53211-3826

Contact: Josh Fraundorf
Company: Community Roofing

Address: 2909 N Hackett
Milwaukee WI 53211
Phone: (414) 332-1139

Measurements provided by www.eagleview.com



Certified Accurate
www.eagleview.com/Guarantee.aspx

This document is provided under License by EagleView Technologies to the requestor for their Internal Use Only subject to the terms and conditions previously agreed to by the requestor when they registered for use of EagleView Technologies Services.

It remains the property of EagleView Technologies and may be reproduced and distributed only within the requestor's company. Any reproduction or distribution to anyone outside of the requestor's company without EagleView's prior written permission is strictly prohibited. All aspects and handling of this report are subject to the Terms and Conditions previously agreed to by the requestor.

Images

The following aerial images show different angles of this structure for your reference.

Top View



Report: 17611981

This document is provided under License by EagleView Technologies to the requestor for their Internal Use Only subject to the terms and conditions previously agreed to by the requestor when they registered for use of EagleView Technologies Services. It remains the property of EagleView Technologies and may be reproduced and distributed only within the requestor's company. Any reproduction or distribution to anyone outside of the requestor's company without EagleView's prior written permission is strictly prohibited. All aspects and handling of this report are subject to the Terms and Conditions previously agreed to by the requestor.

North Side



South Side



Report: 17611981

This document is provided under License by EagleView Technologies to the requestor for their Internal Use Only subject to the terms and conditions previously agreed to by the requestor when they registered for use of EagleView Technologies Services. It remains the property of EagleView Technologies and may be reproduced and distributed only within the requestor's company. Any reproduction or distribution to anyone outside of the requestor's company without EagleView's prior written permission is strictly prohibited. All aspects and handling of this report are subject to the Terms and Conditions previously agreed to by the requestor.

East Side



West Side

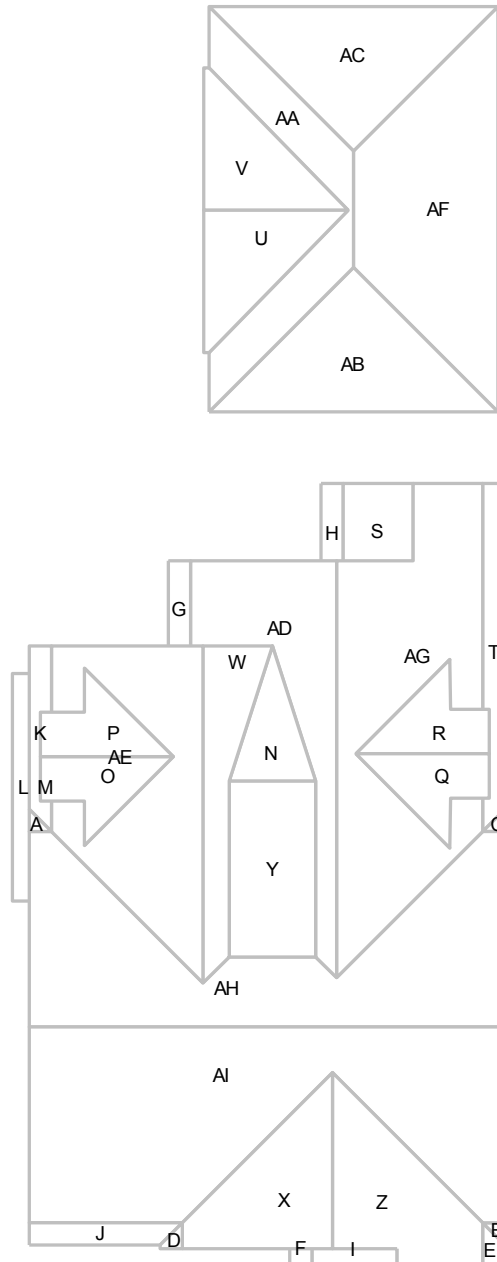


Report: 17611981

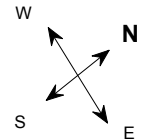
This document is provided under License by EagleView Technologies to the requestor for their Internal Use Only subject to the terms and conditions previously agreed to by the requestor when they registered for use of EagleView Technologies Services. It remains the property of EagleView Technologies and may be reproduced and distributed only within the requestor's company. Any reproduction or distribution to anyone outside of the requestor's company without EagleView's prior written permission is strictly prohibited. All aspects and handling of this report are subject to the Terms and Conditions previously agreed to by the requestor.

Notes Diagram

Roof facets are labeled from smallest to largest (A to Z) for easy reference.



© 2017 EagleView Technologies, Inc.



Report: 17611981

This document is provided under License by EagleView Technologies to the requestor for their Internal Use Only subject to the terms and conditions previously agreed to by the requestor when they registered for use of EagleView Technologies Services. It remains the property of EagleView Technologies and may be reproduced and distributed only within the requestor's company. Any reproduction or distribution to anyone outside of the requestor's company without EagleView's prior written permission is strictly prohibited. All aspects and handling of this report are subject to the Terms and Conditions previously agreed to by the requestor.