

2021-04-14



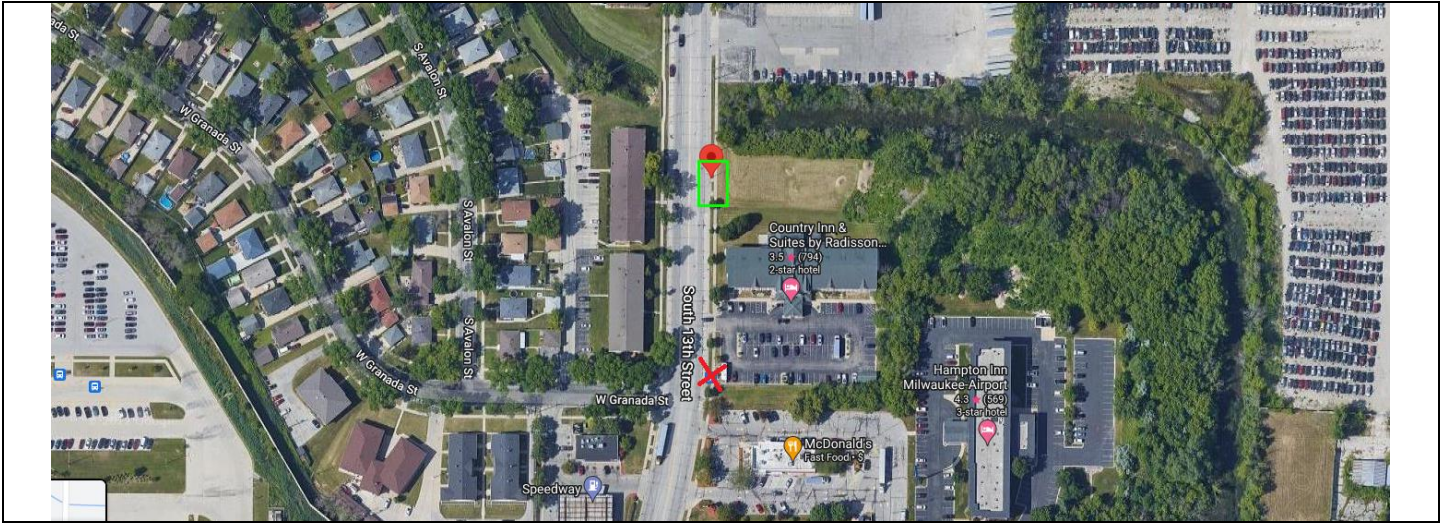
MCTS Proposed Bus Stop Locations City of Milwaukee April 2022

Recommended by the Transit Stop Technical Advisory Committee



David Locher
Transportation Manager
414-343-1727
dlocher@mcts.org

Bus Stop ID #2606	S13 & GRANADA (FARSIDE) #2606 (42.932166, -87.929473)
-------------------	---



Route(s)	Route 19
Reason for New Location	Proposed layover stop where buses would park for 4-to-20 minutes at a time. Current location is between driveways of McDonald's and Country Inn Suites. Complaint of sight lines for Country Inn driveway. New location 300' to the north aims to resolve this concern. Uses existing boarding pads from inactive bus stop.
Distance from previous stop	0.1 miles, NB S13 & COLLEGE (NEARSIDE) #332 (42.930075, -87.929865)
Distance to following stop	<0.1 miles (417-ft), NB S13 & 6130 S. (NEARSIDE) #1926 (42.933305, -87.929459)
Parking Impacts	Currently signed No Parking Anytime
Mobility/Accessibility	New location uses existing bus pads from previously discontinued bus stop.
Pedestrian Safety	Access to sidewalk
County Supervisor	Ryan Clancy, Dist. 4
City Alderperson	Scott Spiker, Dist. 13

Additional Information/Comments
 Location was previously active until Mach 2021 as a bus stop. It was discontinued due to low ridership and stop spacing. This proposes to reactivate the bus stop, and to also use it as a layover.

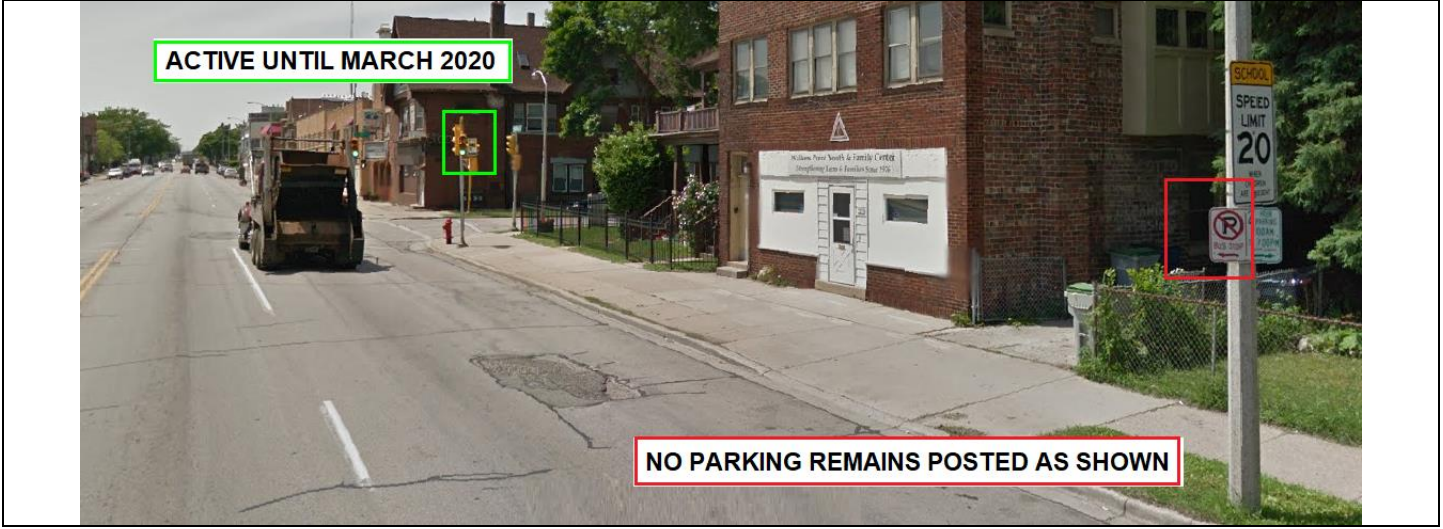
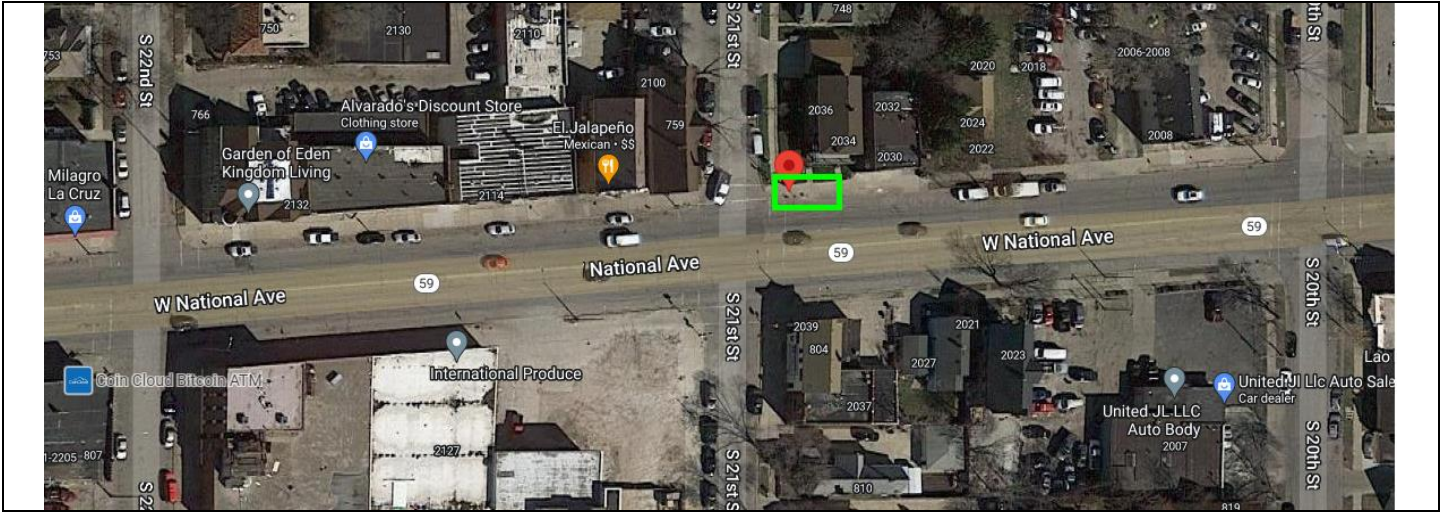
Bus Stop ID #1776 NATIONAL & S. 21ST STREET EASTBOUND (NEAR SIDE) #1776 (43.022579, -87.939586)



Route(s)	Route 18
Reason for New Location	Previously active bus stop was vacated in 2020 due to low ridership and stop spacing. Following discontinuation, concern was raised by Industries for the Blind passenger.
Distance from previous stop	800 FEET, EB NATIONAL & 23RD STREET (NEAR SIDE) #1775 (43.02277, -87.93804)
Distance to following stop	700 FEET, EB NATIONAL & 19 TH STREET (NEAR SIDE) #1777 (43.02263, -87.94081)
Parking Impacts	NO PARKING BUS STOP sign remains posted - confirmed
Mobility/Accessibility	Currently boarding pad exists. All MCTS buses are equipped with a kneeling feature and ADA ramp and may board in driveway to the north. MCTS operators are trained to assist passengers boarding with a mobility device.
Pedestrian Safety	Access to sidewalk, signalized crosswalk
County Supervisor	Sylvia Ortiz-Velez, Dist. 12
City Alderperson	JoCasta Zamarripa, Dist. 8

Additional Information/Comments
 Bus stop previously active until March 2020.

Bus Stop ID #1680 NATIONAL & S. 21ST STREET WESTBOUND (NEARSIDE) #1680 (43.022788, -87.939334)



Route(s)	Route 18
Reason for New Location	Previously active bus stop was vacated in 2020 due to low ridership and stop spacing. Following discontinuation, concern was raised by Industries for the Blind passenger.
Distance from previous stop	700 FEET, WB NATIONAL & 19 TH STREET (NEARSIDE) #1679 (43.02277, -87.93804)
Distance to following stop	700 FEET, WB NATIONAL & 23 RD STREET (NEARSIDE) #1681 (43.02263, -87.94081)
Parking Impacts	NO PARKING BUS STOP sign remains posted - confirmed
Mobility/Accessibility	Currently boarding pad exists. All MCTS buses are equipped with a kneeling feature and ADA ramp and may board in driveway to the north. MCTS operators are trained to assist passengers boarding with a mobility device.
Pedestrian Safety	Access to sidewalk, signalized crosswalk
County Supervisor	Sylvia Ortiz-Velez, Dist. 12
City Alderperson	JoCasta Zamarripa, Dist. 8

Additional Information/Comments
 Bus stop previously active until March 2020.