

Freshwater Plaza

1320 S. 1st Street
Milwaukee, WI

Cermak
FRESH MARKET

Ramp Up

RETAIL 1
22,000 SF

RETAIL 2
6,500 SF

RETAIL 3
6,000 SF

RETAIL 3a
17,500 SF

RETAIL 4
11,500 SF

Monument Sign "C"

WATER FEATURE

S Barclay St

E Scott St

E Greenfield Ave

RETAIL C
3,700 SF

PHASE II

Sign "A" / Downspout

Monument Sign "B"

S 1st St

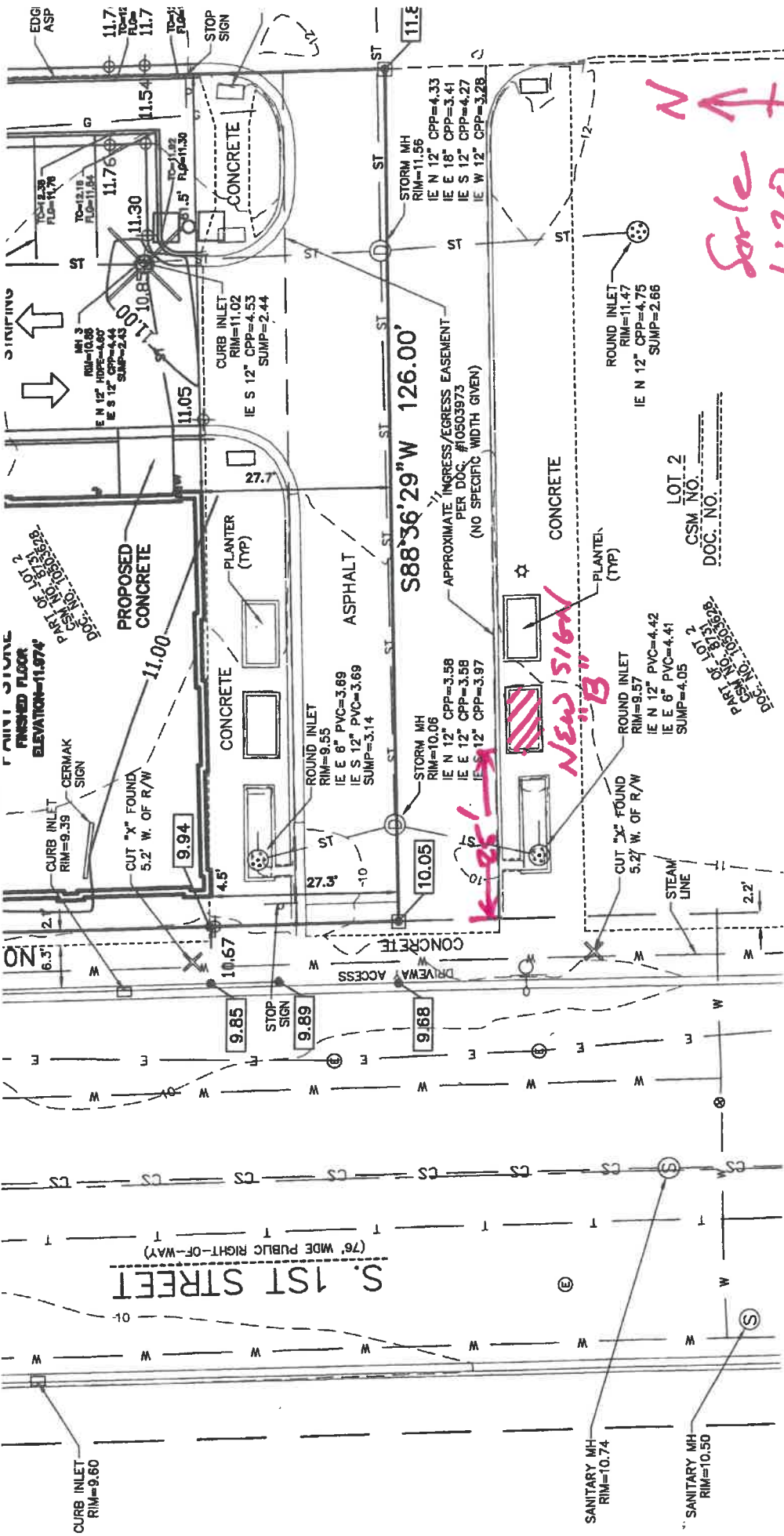
Google Earth

© 2018 Google

300 ft



SHERWIN-WILSONS



N
Sale
1:20

LOT 2
CSM NO.
DOC. NO.

New Sign "B"

← 25'

S. 1ST STREET
(76' WIDE PUBLIC RIGHT-OF-WAY)

CURB INLET
RIM=9.60

SANITARY MH
RIM=10.74

SANITARY MH
RIM=10.50

9.85
STOP SIGN

9.89
STOP SIGN

9.68
STOP SIGN

CURB INLET
RIM=9.39

9.94
CUT "X" FOUND
5.2' W. OF R/W

ROUND INLET
RIM=9.55
IE E 8" PVC=3.69
IE S 12" PVC=3.69
SUMP=3.14

STORM MH
RIM=10.06
IE N 12" CPP=3.58
IE E 12" CPP=3.58
IE S 12" CPP=3.97

CUT "X" FOUND
5.2' W. OF R/W

ROUND INLET
RIM=9.57
IE N 12" PVC=4.42
IE E 6" PVC=4.41
SUMP=4.05

ROUND INLET
RIM=11.47
IE N 12" CPP=4.75
SUMP=2.66

ROUND INLET
RIM=11.56
IE N 12" CPP=4.33
IE E 18" CPP=3.41
IE S 12" CPP=4.27
IE W 12" CPP=3.28

S88'36'29"W 126.00'

APPROXIMATE INGRESS/EGRESS EASEMENT
PER DOC. #10503973
(NO SPECIFIC WIDTH GIVEN)

PROPOSED CONCRETE

CONCRETE

ASPHALT

CONCRETE

CURB INLET
RIM=11.02
IE S 12" CPP=4.53
SUMP=2.44

CONCRETE

STOP SIGN

EDG ASP

11.7
TOP FLOOR

11.7
TOP FLOOR

11.54
TOP FLOOR

11.76
TOP FLOOR

11.30
TOP FLOOR

11.02
TOP FLOOR

11.05
TOP FLOOR

11.05
TOP FLOOR

11.05
TOP FLOOR

11.05
TOP FLOOR

11.05
TOP FLOOR

11.05
TOP FLOOR

11.05
TOP FLOOR

11.05
TOP FLOOR

11.05
TOP FLOOR

11.05
TOP FLOOR

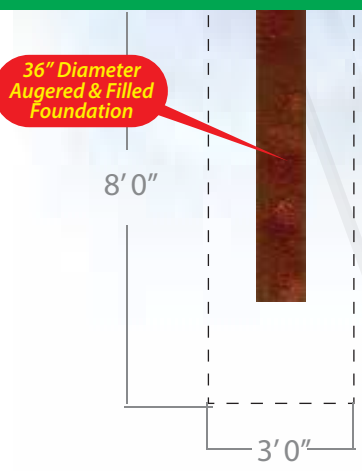
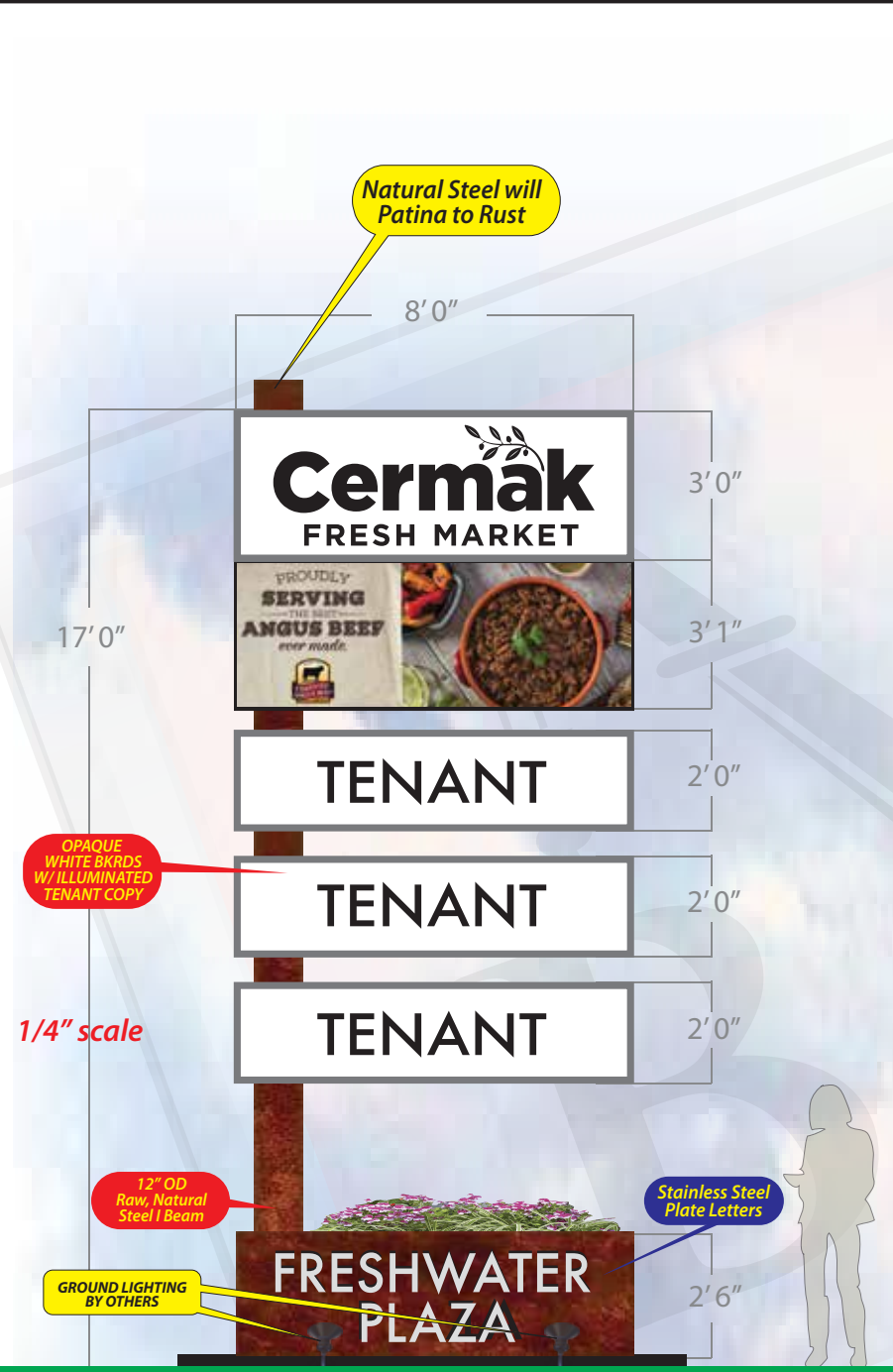
11.05
TOP FLOOR

ERESHIMWATER
PLAZZA



SAVED AS Freshwater Plaza SALES REP Bob Hacker

LOCATION Milwaukee Wi DATE 7 Nov 17 REVISION 4 Apr 18 13 June 18 21 June 18 26 June 18



Freshwater Plaza monument signage SIGN B

SPECIFICATIONS

FABRICATE AND INSTALL 2 SIDED INTERNALLY ILLUMINATED MONUMENT SIGNAGE WITH ELECTRONIC MESSAGE CENTER

SIGN TO BE TYPE A

- CABINETS TO BE EXTRUDED ALUMINUM WITH 2.25" RETAINERS PAINTED METALLIC SILVER
- FACES TO BE .125 ALUM GAUGE PAINTED WHITE WITH ROUTED TENTENT COPY BACKED WITH ILLUMINATD PANELS
- ILLUMINATED WITH WHITE LEDs
- POWERED WITH APPROPRIATE LOAD POWER SUPPLIES
- MESSAGE CENTER TO BE FULL COLOR 16mm 60 x 150 MATRIX RGB ELECTRONIC
- POLE TO BE 12" NATURAL STEEL I-BEAM, WILL PATINA TO RUST WITH EXPOSURE
- BASE TO BE NATURAL STEEL SHEET, WILL PATINA TO RUST WITH EXPOSURE

FINAL ELECTRICAL CONNECTION IS CLIENT'S RESPONSIBILITY

our products are certified by Underwriters Laboratories, Inc.

This sign shall be manufactured in accordance with Article 601 of the National Electrical Code and / or the applicable local codes. This includes proper grounding and bonding of the sign. Signs shall bear correct UL Labels.

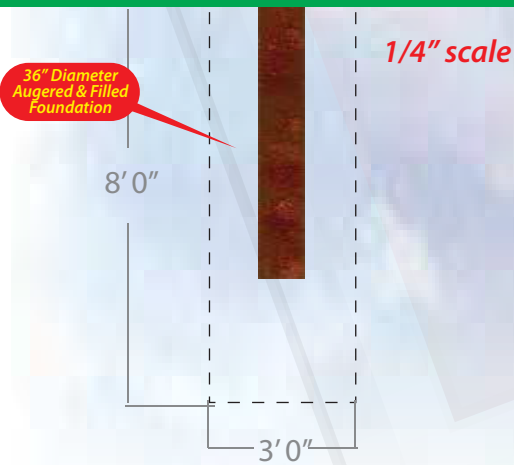
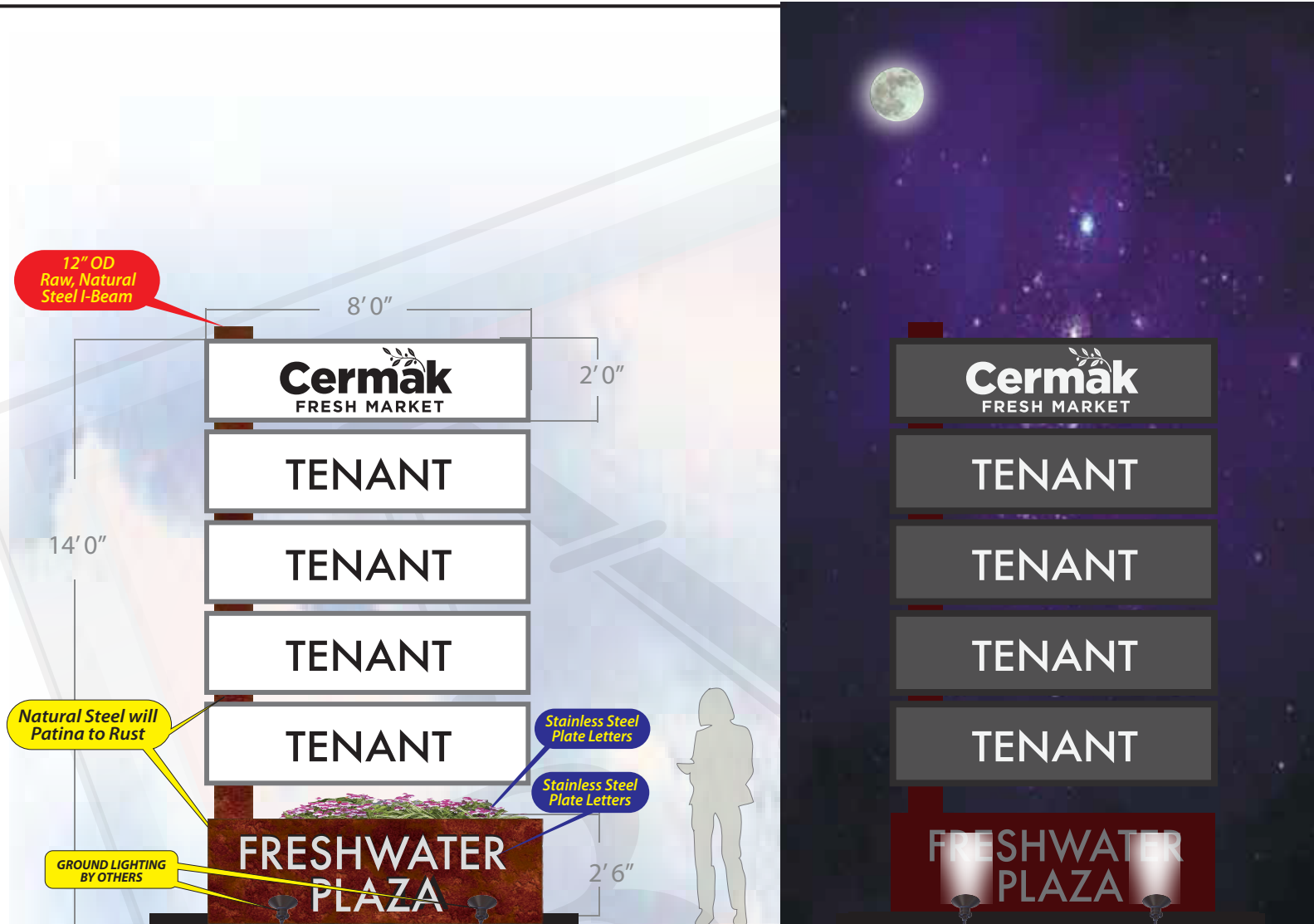
APPROVAL / DATE

Printed artwork colors are not always representative of final product colors. Please refer to specifications for call out or salesman for samples

These drawings are the exclusive property of Bauer Sign Company. Not to be duplicated in any way without expressed written permission!

SAVED AS Freshwater Plaza SALES REP Bob Hacker

LOCATION Milwaukee Wi DATE 7 Nov 17 REVISION 4 Apr 18 13 June 18 21 June 18



Freshwater Plaza *monument signage* SIGN C

SPECIFICATIONS

FABRICATE AND INSTALL 2 SIDED INTERNALLY ILLUMINATED MONUMENT SIGNAGE WITH ELECTRONIC MESSAGE CENTER

SIGN TO BE TYPE A

- **CABINETS** TO BE EXTRUDED ALUMINUM WITH 2.25" RETAINERS PAINTED METALLIC SILVER
- **FACES** TO BE .125 ALUM GAUGE PAINTED WHITE WITH ROUTED TENANT COPY BACKED WITH ILLUMINATED PANELS
- **ILLUMINATED** WITH WHITE LEDs
- **POWERED** WITH APPROPRIATE LOAD POWER SUPPLIES
- **POLE** TO BE 12" NATURAL STEEL I-BEAM, WILL PATINA TO RUST WITH EXPOSURE
- **BASE** TO BE NATURAL STEEL SHEET, WILL PATINA TO RUST WITH EXPOSURE

FINAL ELECTRICAL CONNECTION IS CLIENT'S RESPONSIBILITY

our products are certified by Underwriters Laboratories, Inc.

This sign shall be manufactured in accordance with Article 601 of the National Electrical Code and / or the applicable local codes. This includes proper grounding and bonding of the sign. Signs shall bear correct UL Labels.

APPROVAL / DATE

Printed artwork colors are not always representative of final product colors. Please refer to specifications for call out or salesman for samples

These drawings are the exclusive property of Bauer Sign Company. Not to be duplicated in any way without expressed written permission!



JIMMY JOHN'S

The UPS Store 

Sprint 

gallery **tribeca** books gifts
cafe

1312

1314

1316

1318

The UPS Store



1314
OPEN

The UPS Store
Entrance
Entrada

1314

The UPS Store
Print & Business Services

Entrance on other
side of building
Please use Parking Lot

Fax



**ASK US ABOUT
PRINTING**
Let us tell your story.

**Packaging
& Shipping**



**PACK & SHIP
GUARANTEE***
Certified Packing Experts.

**Mailbox & Postal
Solutions**



**NOTARY
SERVICES**
Licensed pros are here.

We Print



**GET A
MAILBOX**
With a real street address.

Notary



**WE CAN
PRINT IT HERE**
Quick turnaround time.