



Certificate of Appropriateness

Milwaukee Historic Preservation Commission/200 E. Wells Street/Milwaukee, WI 53202/phone 414-286-5712/fax 414-286-3004

Property	511 N. Broadway.	East Side Commercial
Description of work	Amendment to previous approval for the addition of 9 th through 11 th floor private terraces.	
Date issued	6/13/2019	PTS ID 114755 COA, terrace additions

In accordance with the provisions of Section 320-21 (11) and (12) of the Milwaukee Code of Ordinances, the Milwaukee Historic Preservation Commission has issued a certificate of appropriateness for the work listed above. The work was found to be consistent with preservation guidelines. The following conditions apply to this certificate of appropriateness:

All work must be done in a craftsman-like manner, and must be completed within one year of the date this certificate was issued. Staff must approve any changes or additions to this certificate before work begins. Work that is not completed in accordance with this certificate may be subject to correction orders or citations. If you require technical assistance, please contact Historic Preservation staff as follows: Phone: (414) 286-5712 E-mail: hpc@milwaukee.gov.

If permits are required, you are responsible for obtaining them from the Milwaukee Development Center. If you have questions about permit requirements, please consult the Development Center's web site, www.milwaukee.gov/permits, or call (414) 286-8210.

City of Milwaukee Historic Preservation

Copies to: Development Center, Ald.

8th FLOOR



Rendering of balcony design from
the perspective of the 8th floor

8th FLOOR



Rendering of balcony design from the perspective of the 8th floor

9th & 10TH FLOOR



Rendering of balcony design from the perspective of the 9th and 10th floors

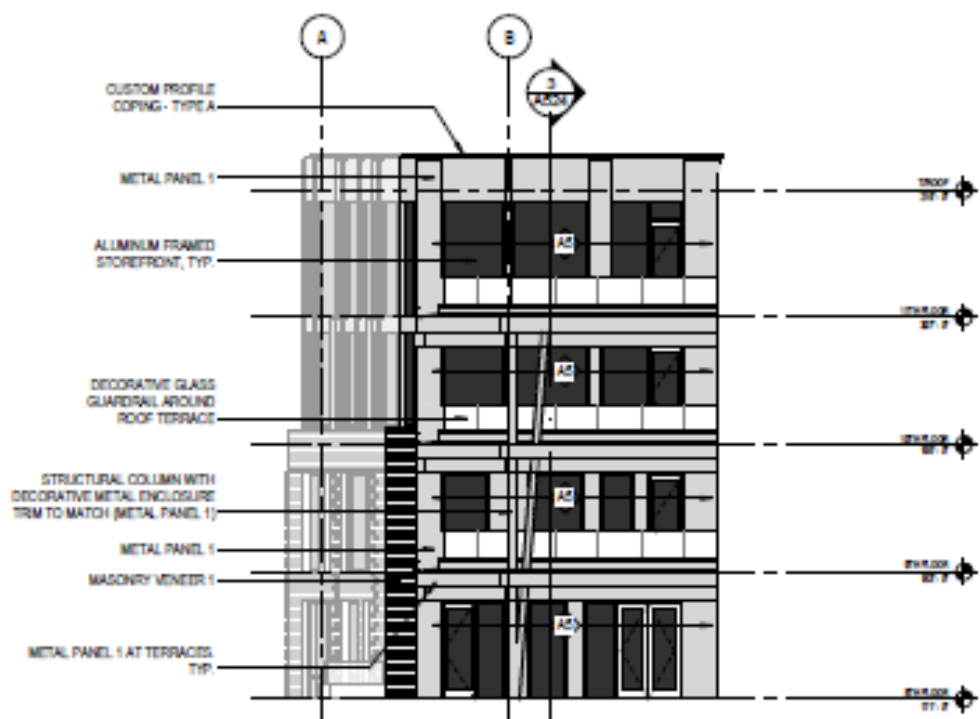
11th FLOOR



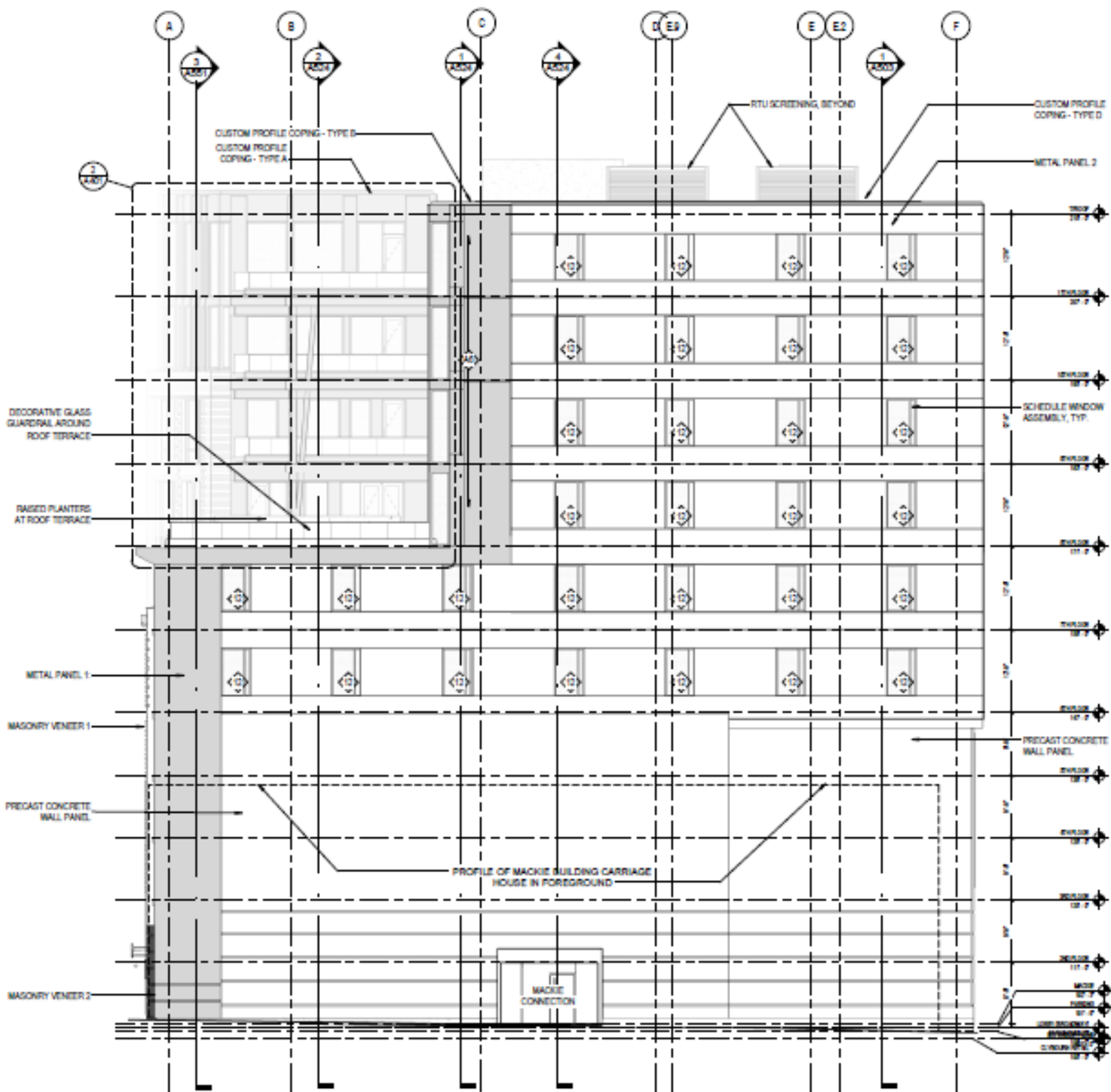
Rendering of balcony design from the perspective of the 11th floor



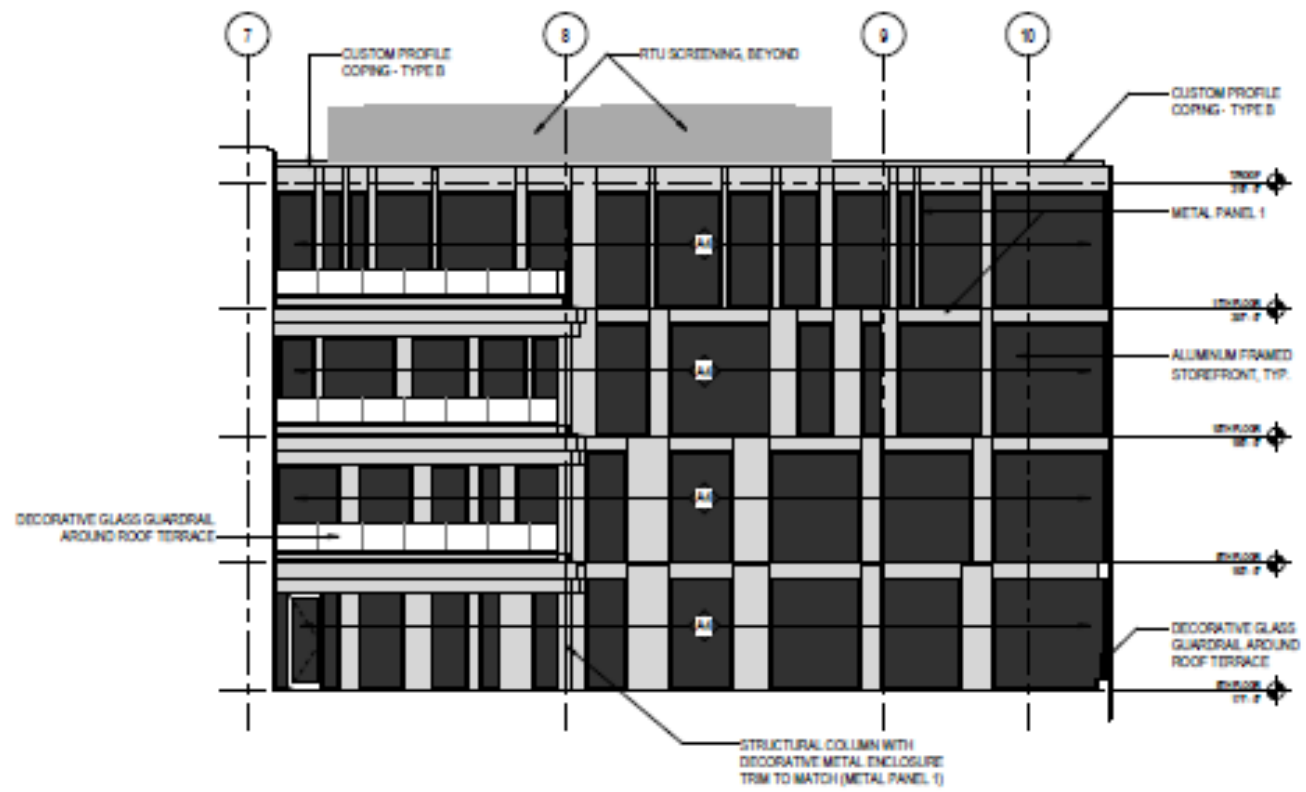
Rendering of balcony design from an aerial perspective



2 PARTIAL NORTH ELEVATION - TERRACE
SCALE: 1/8" = 1'-0"

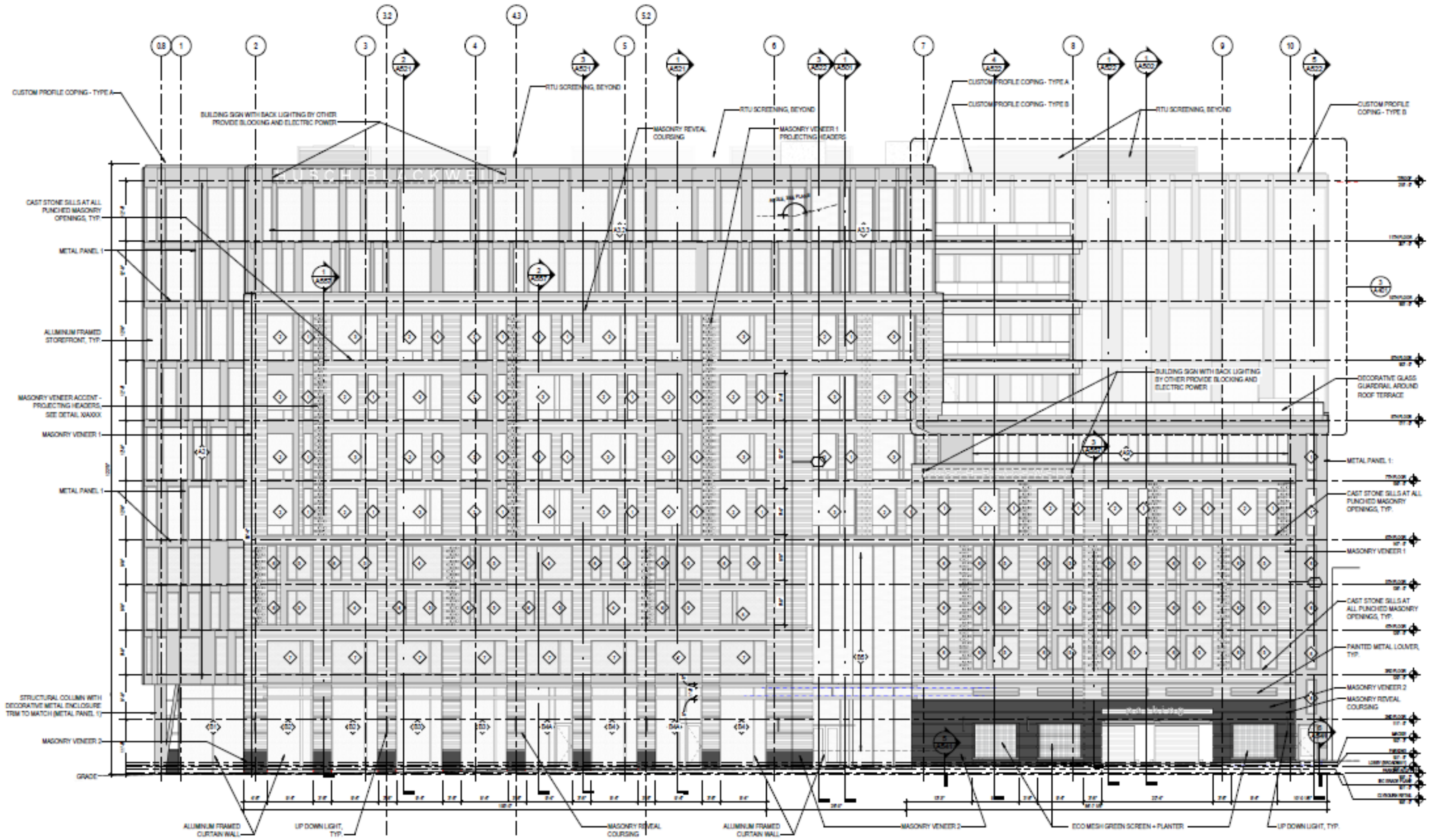


1 NORTH ELEVATION
SCALE: 1/8" = 1'-0"



3 PARTIAL EAST ELEVATION - TERRACE
SCALE: 1/8" = 1'-0"

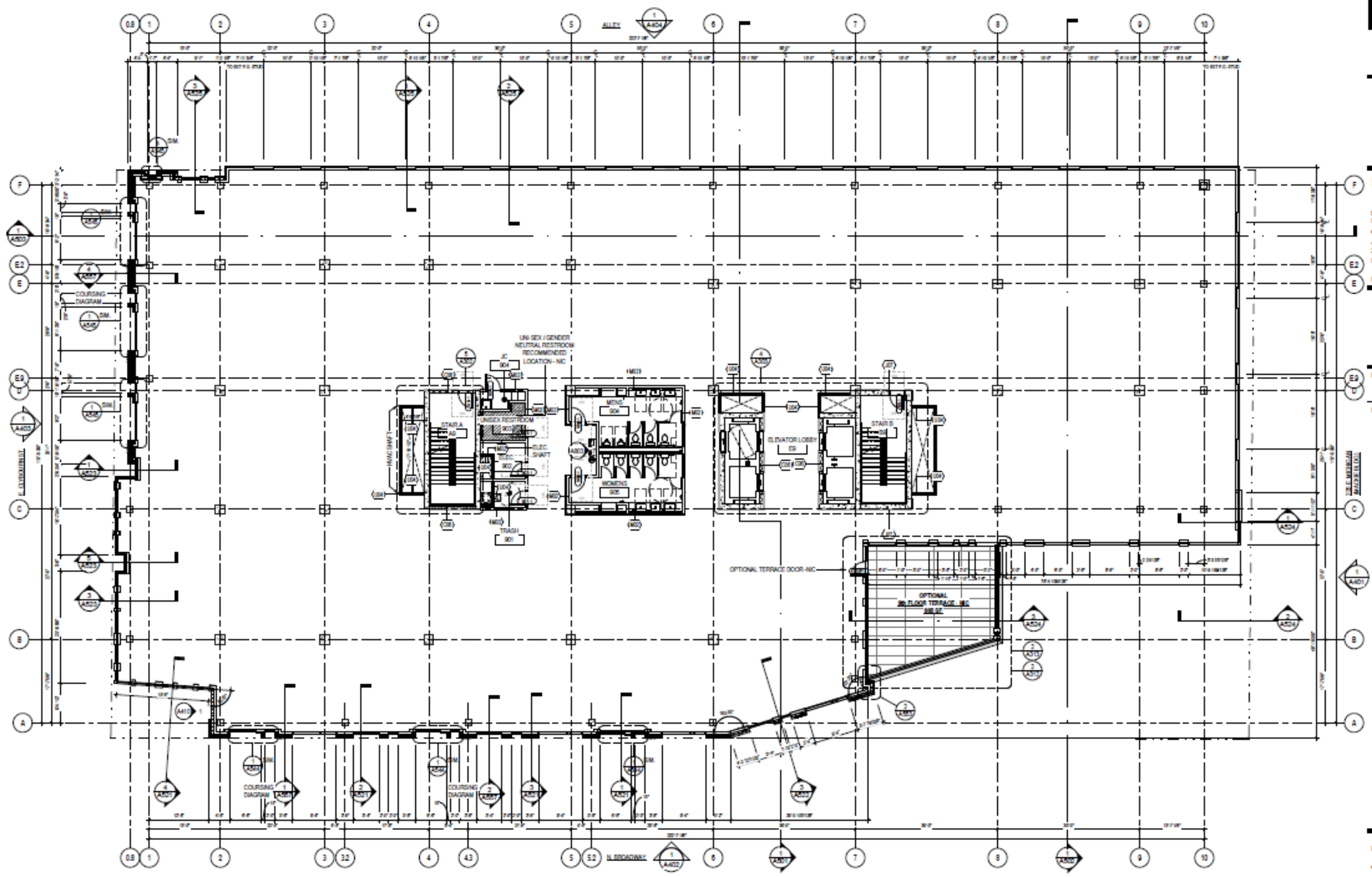
Revised elevations detailing terrace additions



1 EAST ELEVATION
SCALE: 1/8" = 1'-0"

Revised elevation detailing terrace additions

Revised 9th floor plans detailing terrace additions

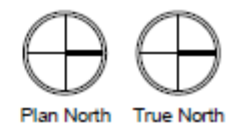


GENERAL NOTES - FLOOR PLANS

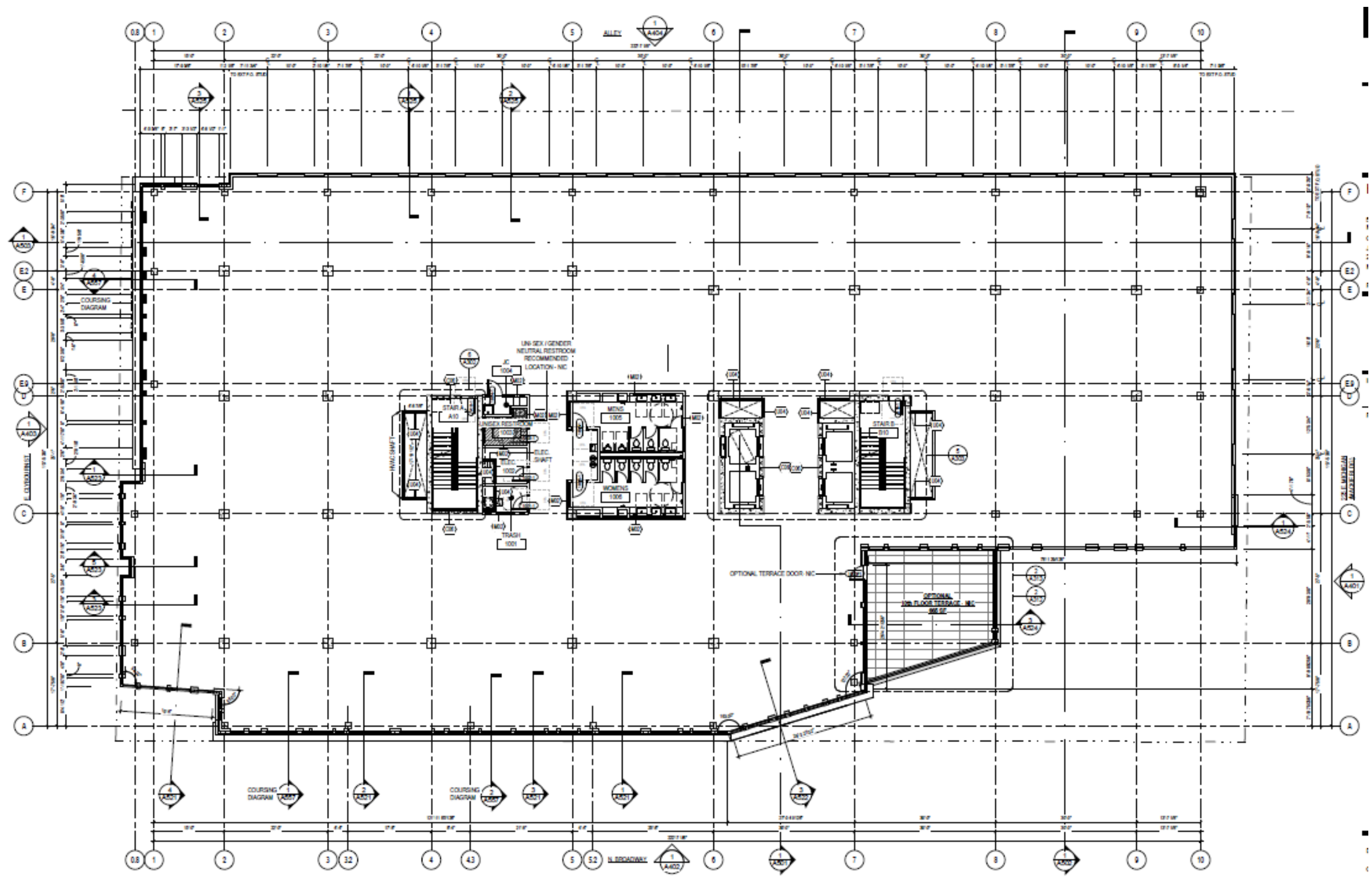
1. ARCHITECTURAL ELEVATION 100'-0" = CIVIL ELEVATION 10.5'
2. DRAINS SHOWN FOR REFERENCE. COORDINATE DRAIN ELEVATIONS AND SLAB SLOPING WITH STRUCTURAL DRAWINGS.
3. DIMENSION TO EXTERIOR OF BUILDING ARE TO EXTERIOR F.O. MASONRY U.N.O.

1 9TH FLOOR
SCALE: 1/8" = 1'-0"

SCALE: 1/8" = 1'-0"



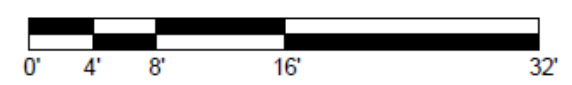
Revised 10th floor plans detailing terrace additions



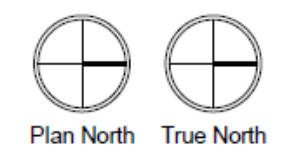
GENERAL NOTES - FLOOR PLANS

1. ARCHITECTURAL ELEVATION 100'-0" = CIVIL ELEVATION 10.5'
2. DRAINS SHOWN FOR REFERENCE. COORDINATE DRAIN ELEVATIONS AND SLAB SLOPING WITH STRUCTURAL DRAWINGS.
3. DIMENSION TO EXTERIOR OF BUILDING ARE TO EXTERIOR F.O. MASONRY U.N.O.

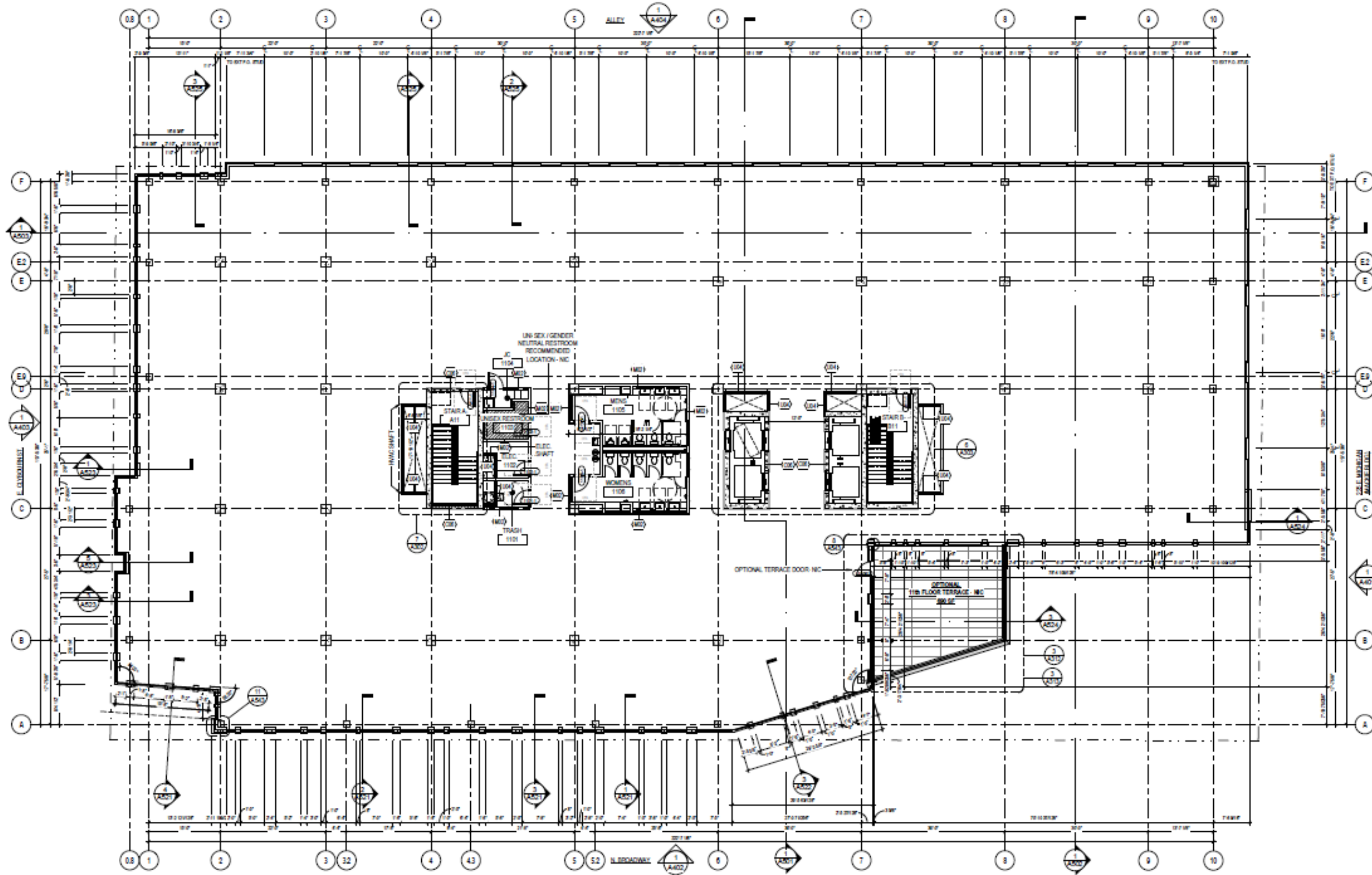
1 10TH FLOOR
SCALE: 1/8" = 1'-0"



SCALE: 1/8" = 1'-0"



Revised 11th floor plans detailing terrace additions



GENERAL NOTES - FLOOR PLANS

1. ARCHITECTURAL ELEVATION 100'-0" = CIVIL ELEVATION 10.5'
2. DRAINS SHOWN FOR REFERENCE. COORDINATE DRAIN ELEVATIONS AND SLAB SLOPING WITH STRUCTURAL DRAWINGS.
3. DIMENSION TO EXTERIOR OF BUILDING ARE TO EXTERIOR F.O. MASONRY U.N.O.

1 11TH FLOOR
SCALE: 1/8" = 1'-0"



SCALE: 1/8" = 1'-0"

