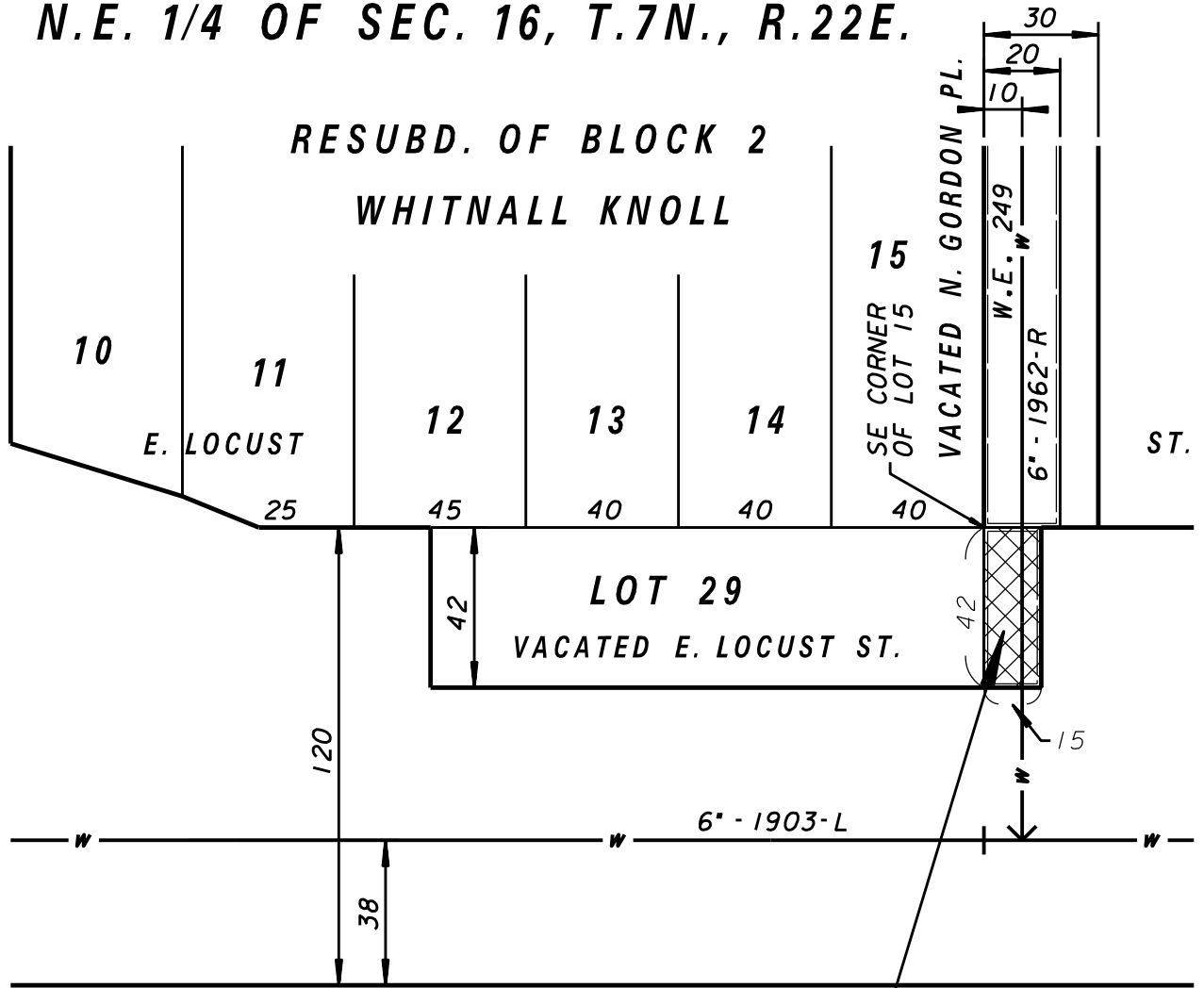


N.E. 1/4 OF SEC. 16, T.7N., R.22E.

N. DOUSMAN ST.

RESUBD. OF BLOCK 2
WHITNALL KNOLL



LOT 29
VACATED E. LOCUST ST.

W.E. 896

WATER EASEMENT W.E. 896



Water Engineering

Department of Public Works
Milwaukee, Wisconsin

WATER EASEMENT

IN
AT

VACATED E. LOCUST ST.
VACATED N. GORDON PL.

SCALE 1" = 50'

1/4 SEC. NO. 315

PLAN DATE 2-21-02

DRAWN BY P.W.P.

CHECKED BY P.J.G.

REVIEWED BY

WORK ORDER 0232

APPROVED

DATE

MAINS DESIGN ENGINEER

CHIEF DESIGN ENGINEER

SPECIAL DEPUTY COMMISSIONER OF PUBLIC WORKS

SHEET NO. 1 OF 1 PLAN FILE NO. WE896

