

## Zoning Map







Vicinity Map

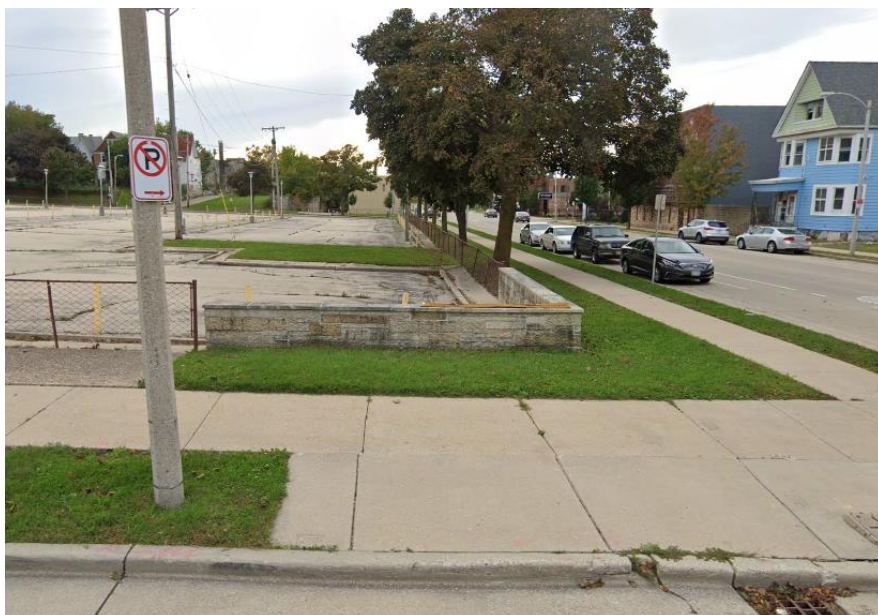


## Site Photos

Existing Panel Sign (N. 23<sup>rd</sup> St.)



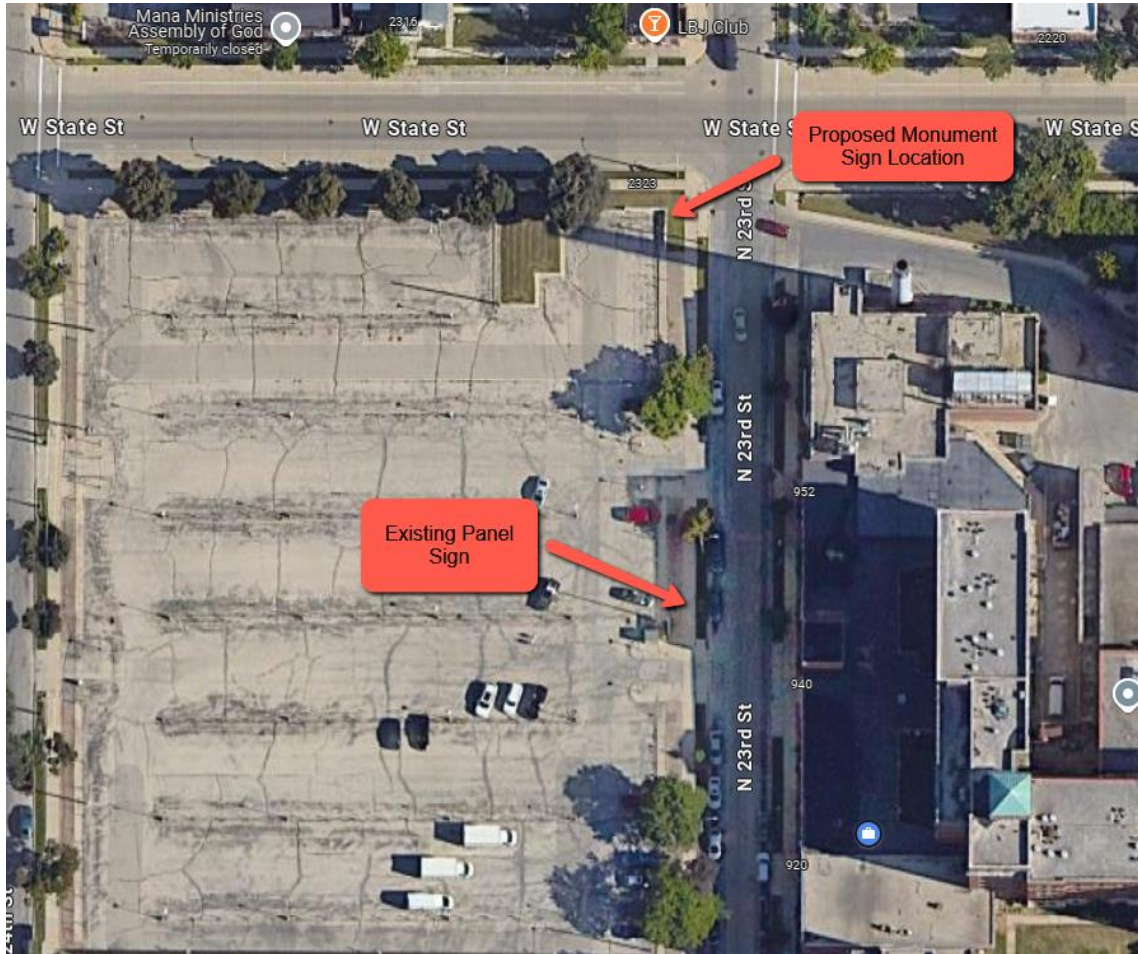
Proposed Location of Monument Sign (corner of N. 23<sup>rd</sup> St. & W. State St.)







## Site Plan and Layout





### Monument Sign



### Signage Details

- I. Signage Cabinet
  - a. Cabinet Size 52" Tall x 84" Wide
  - b. Powder Coated Aluminum
  - c. 2-sided LED Display Internally Illuminated
  - d. Sign Faces (2) Routed Aluminum Backed with Translucent Polycarbonate
  - e. Matrix: 60x180
- II. Masonry Brick Base
  - a. Size: 24" x 96"
  - b. Foundation Block with Reinforcing & Grout
  - c. Brick Caps

## Sign Details cont.

### Post & Panel Sign



### Signage Details

- I. Upper Sign Panel:
  - a. ACM panel w/ [V-1 - V-5] vinyl graphics applied 1st surface or direct print graphics
  - b. Flush mount panel to existing sign structure w/ fasteners through face, paint exposed fasteners to match sign face
- II. Paint Cabinet:
  - a. Prep and paint existing sign structure Matthews Black
- III. Additional Notes
  - a. Remove and dispose of existing COAH parking sign