



LIVING WITH HISTORY

Certificate of Appropriateness

Milwaukee Historic Preservation Commission/200 E. Wells Street/Milwaukee, WI 53202/phone 414-286-5712/fax 414-286-3004

Property 3129 N. SHERMAN BL. Sherman Boulevard Historic District
Description of work Applicant will have service door, 32 x 80, cut into garage wall that faces the house. No service door had existed previously. The new door will have a six-panel design and be made of steel. The new overhead steel garage door will also be installed and will have raised panels.
Date issued 4/29/2015 PTS ID 102374 COA

In accordance with the provisions of Section 320-21 (11) and (12) of the Milwaukee Code of Ordinances, the Milwaukee Historic Preservation Commission has issued a certificate of appropriateness for the work listed above. The work was found to be consistent with preservation guidelines. The following conditions apply to this certificate of appropriateness:

The new service door will have a steel lintel and the surrounding masonry will be repaired to match the original wall. Mortar must match the original in color, hardness and texture.

All work must be done in a craftsman-like manner, and must be completed within one year of the date this certificate was issued. Staff must approve any changes or additions to this certificate before work begins. Work that is not completed in accordance with this certificate may be subject to correction orders or citations. If you require technical assistance, please contact Carlen Hatala of the Historic Preservation staff as follows: Phone: (414) 286-5722 Fax: (414) 286-5722 E-mail: chatal@milwaukee.gov.

If permits are required, you are responsible for obtaining them from the Milwaukee Development Center. If you have questions about permit requirements, please consult the Development Center's web site, www.milwaukee.gov/build, or call (414) 286-8210.

City of Milwaukee Historic Preservation Staff

Copies to: Development Center, Ald. Willie Wade, Contractor, Inspector John Yarcho (286-2520)



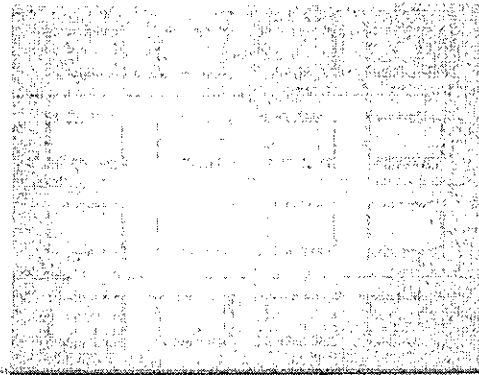
Duplex at 3129-3131 North Sherman Boulevard



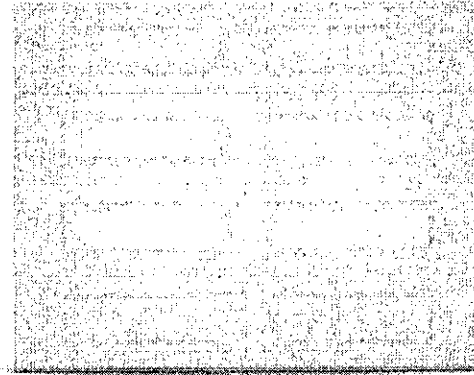
New service door to be installed in garage



Existing overhead garage door

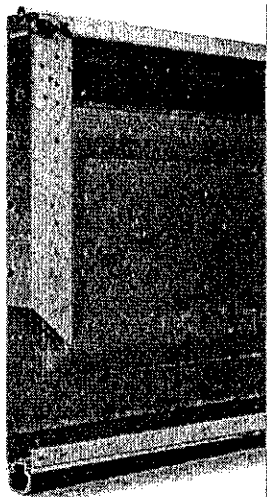


Short Panel



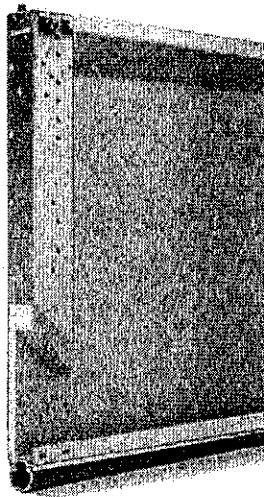
Long Panel

MODEL INSULATIONS



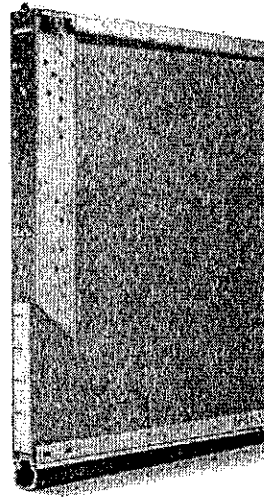
Non-Insulated

- Models: 2256/4250 and 2240/4240
- R-value n/a



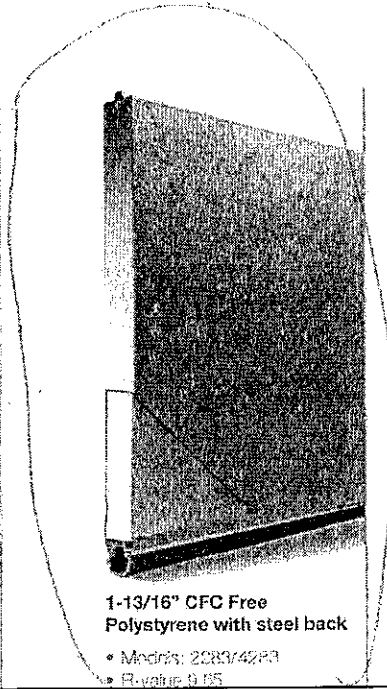
9/16" CFC Free Polystyrene with vinyl back

- Models: 2266/4256
- R-value 3.56



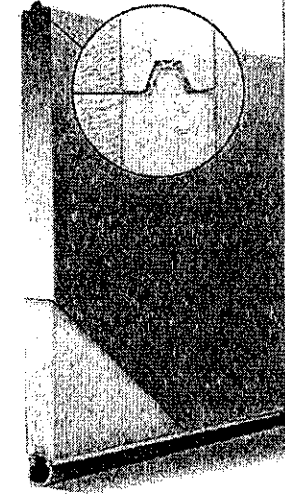
1-3/8" CFC Free Polystyrene with vinyl back

- Models: 2251/4251 and 2241/4241



1-13/16" CFC Free Polystyrene with steel back

- Models: 2283/4283
- R-value 9.65



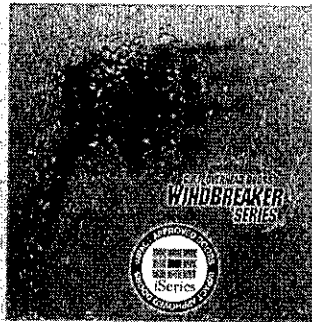
1-7/8" CFC Free Urethane with steel back

- Models: 2216/4216
- Thermally-broken
- R-value 17.19

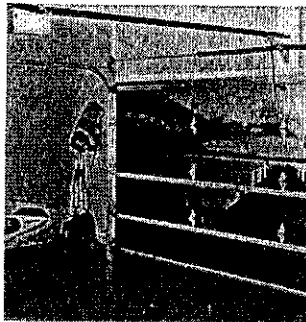
New steel garage door will have either short or long panels

Product	2250/4250	2251/4251	2255/4255	2240/4240	2241/4241	2283/4283	2216/4216
Section Joint	Tongue and groove	Tongue and groove	Tongue and groove	Tongue and groove	Tongue and groove	Tongue and groove	Thermally broken tongue and groove
Section Thickness	2"	2"	2"	2"	2"	2"	2"
Section Material	Steel	Steel	Steel	Steel	Steel	Steel	Steel
Insulation	—	1 3/8" oil (chlorofluorocarbon) free polystyrene with vinyl back	9/16" oil free polystyrene with vinyl back	—	1 3/8" oil free polystyrene with vinyl back	1 1/2" oil free polystyrene with steel back	1 7/8" foam injected oil free urethane with steel back
R-value ¹	—	7.94	3.56	—	7.94	9.65	17.19
Windbreaker Series	Available	Available	—	Available	Available	Available	Available
Impact Series	Available	Available	—	Available	Available	Available	Available
Options							
Window Inserts	Cathedral, mission, cascade, waterfall, sherwood, sunburst, stockton, archad stockton ² , madison ³ , archad madison ³						
Glass ⁴	1/8" - Plain, obscure, tinted	1/8" - Plain, obscure, tinted	1/8" - Plain, obscure, tinted	1/8" - Plain, obscure, tinted	1/8" - Plain, obscure, tinted	1/8" & 2 1/16" - Plain obscure, tinted	2 1/16" - Plain, obscure, tinted
Designer Glass	—	—	—	—	—	Hawthorne, somerset newport, hampton, temple, florence	Hawthorne, somerset newport, hampton, temple florence
Colors ⁵	White, almond, sandstone, brown, desert tan	White, almond, sandstone, brown, desert tan	White, almond, sandstone, brown, desert tan	White, almond, sandstone, brown, evergreen	White, almond, sandstone, brown, evergreen	White, almond, sandstone, brown, evergreen, bronze, grey, desert tan	White, almond, sandstone, brown, evergreen, bronze, desert tan
Accents Images	—	—	—	—	—	Available	Available
Appearance and Endurance Package	—	—	—	—	—	Available	Available
Warranty							
Sections	Limited Lifetime Warranty	Limited Lifetime Warranty	Limited Lifetime Warranty	Limited Lifetime Warranty	Limited Lifetime Warranty	Limited Lifetime Warranty	Limited Lifetime Warranty
Hardware	3-years	3-years	3-years	3-years	3-years	3-years	3-years
Springs	3-years for doors up to 8' high	3-years for doors up to 8' high	3-years for doors up to 8' high	3-years for doors up to 8' high	3-years for doors up to 8' high	3-years for doors up to 8' high	3-years for doors up to 8' high

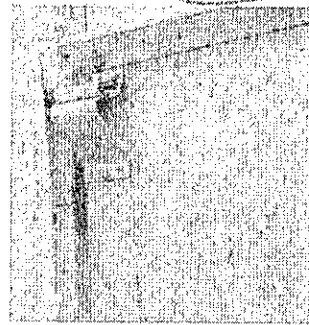
1 R-value rating is in accordance with ASTM C518 procedure. 2 Tinted window is C.H.I. leader for exact color match. 3 Available in the following models only. 4 Tinted or tinted glass is not available for coating. 5 Also available in 1 1/2" polycarbonate.



Windbreaker and Impact Series
Wind can be unpredictable and destructive. This is why C.H.I. Windbreaker Series and I Series doors are designed, tested, and built to the most rugged specifications. Wind chamber tested to ensure wind-load resistance, these extra-sturdy designs provide enhanced defense against the elements.



Accents Images
Make your new garage door stand out with an Accents Image from C.H.I. Precisely made to be vibrant, detailed and sharp, each image accurately portrays vivid, true-to-life colors. Choose from multiple images to sober into your lifestyle.



Endurance and Appearance Package
With the Appearance Package your garage door will come equipped with all hardware, including struts and tracks, powder coated white. While the Endurance Package includes 25,000 cycle springs, a Lifetime Warranty to the original homeowner on all hardware and springs, plus the Appearance Package.

Garage door specifications