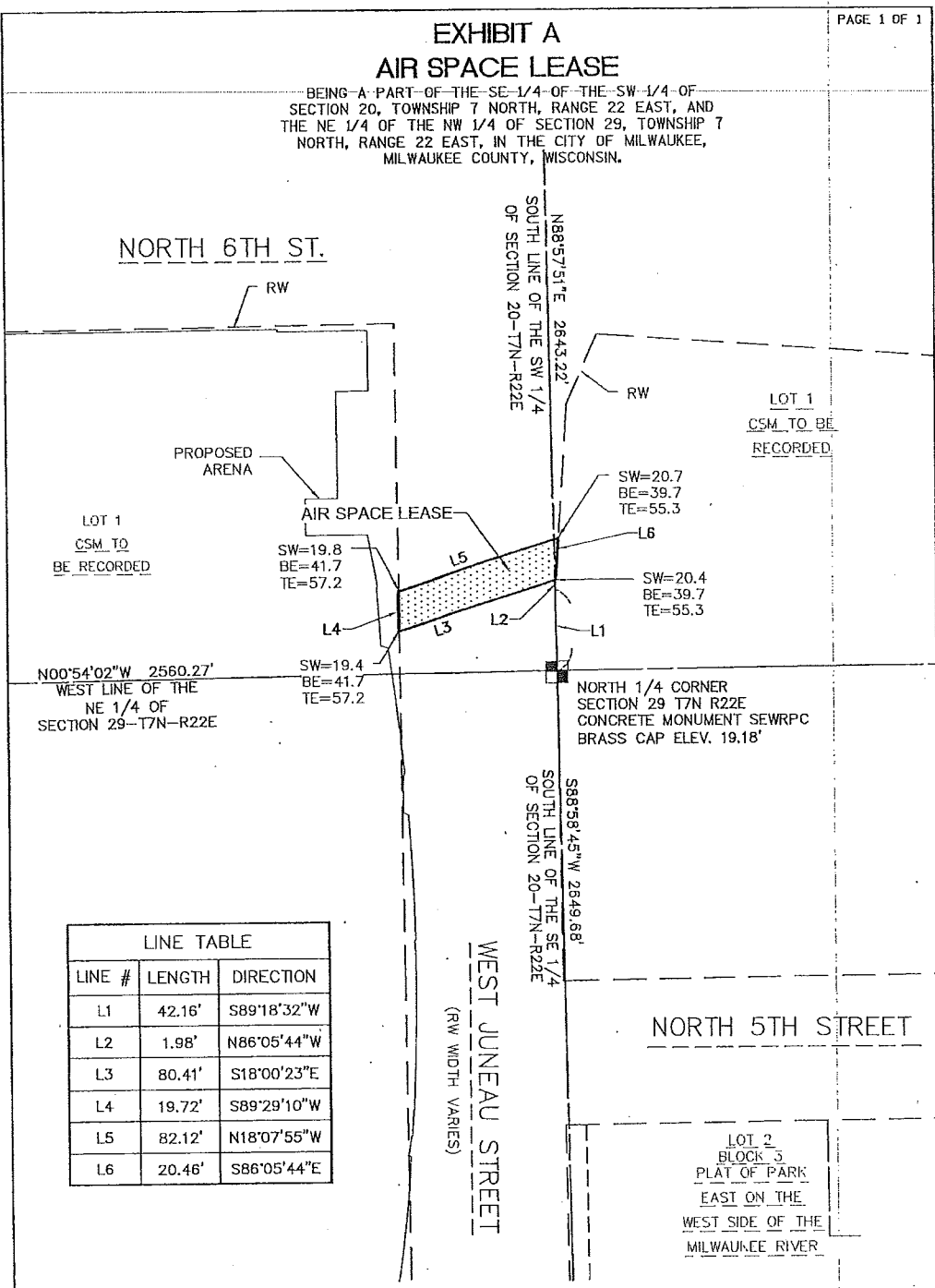


EXHIBIT A AIR SPACE LEASE

BEING A PART OF THE SE 1/4 OF THE SW 1/4 OF SECTION 20, TOWNSHIP 7 NORTH, RANGE 22 EAST, AND THE NE 1/4 OF THE NW 1/4 OF SECTION 29, TOWNSHIP 7 NORTH, RANGE 22 EAST, IN THE CITY OF MILWAUKEE, MILWAUKEE COUNTY, WISCONSIN.



NORTH 6TH ST.

LOT 1
CSM TO BE
RECORDED

LOT 1
CSM TO
BE RECORDED

SW=19.8
BE=41.7
TE=57.2

SW=20.7
BE=39.7
TE=55.3

SW=20.4
BE=39.7
TE=55.3

N00°54'02"W 2560.27'
WEST LINE OF THE
NE 1/4 OF
SECTION 29-T7N-R22E

SW=19.4
BE=41.7
TE=57.2

NORTH 1/4 CORNER
SECTION 29 T7N R22E
CONCRETE MONUMENT SEWRPC
BRASS CAP ELEV. 19.18'

N88°57'51"E 2643.22'
SOUTH LINE OF THE SW 1/4
OF SECTION 20-T7N-R22E

S86°58'45"W 2649.68'
SOUTH LINE OF THE SE 1/4
OF SECTION 20-T7N-R22E

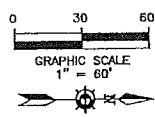
WEST JUNEAU STREET
(RW WIDTH VARIES)

NORTH 5TH STREET

LOT 2
BLOCK 3
PLAT OF PARK
EAST ON THE
WEST SIDE OF THE
MILWAUKEE RIVER

LINE TABLE		
LINE #	LENGTH	DIRECTION
L1	42.16'	S89°18'32"W
L2	1.98'	N86°05'44"W
L3	80.41'	S18°00'23"E
L4	19.72'	S89°29'10"W
L5	82.12'	N18°07'55"W
L6	20.46'	S86°05'44"E

HORIZONTAL DATUM IS THE WISCONSIN STATE PLANE COORDINATE SYSTEM SOUTH ZONE NAD27. NORTH IS REFERENCED TO THE S. LINE OF THE SW 1/4 OF SECTION 20-7-22 PUBLISHED BY SEWRPC AS N88°57'51"E. ALL DISTANCES ARE GROUND MEASURED



LEGEND:

- = 3D AIR SPACE LEASE CONTAINING (1793 S.F.)
- R/W = RIGHT OF WAY
- SW = SIDEWALK ELEVATION
- BE = BOTTOM EASEMENT ELEVATION
- TE = TOP LEASE ELEVATION

KAPUR & ASSOCIATES, INC.
CONSULTING ENGINEERS
MILWAUKEE, WISCONSIN
414.351.6668