

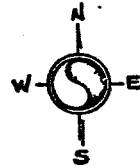
N. E. 1-7-21
ATLAS P. 230

W. HAMPTON

230

AVE.

230-09



ST.

ST.

N. THIRTIETH

N. TWENTY-NINTH

N. MILW. TOWNSITE CO'S. ADD. NO. 2

	130	125	120	
	STR	14.24	14.26	STR
47180	230-0270 43	43	2	47183
47178	-0269 42	42	3	47177
47174	-0268 41	41	4	47173
47170	-0267 40	40	5	47169
47168	---	39	6	47163
47160-62	-0266 38	38	7	47159
47158	-0265 37	37	8	47155
47152	-0264 36	36	9	47151
47148-50	-0263 35	35	10	47147
47144	---	34	11	47143
	-0262 33	33	12	47141
47140	-0261 32	32	13	47139
47134	-0260 31	31	14	47131
47132	---	30	15	47127
47130	-0259 30	30	16	47123
47126	-0258 29	29	17	47119
47122	-0257 28	28	18	47115
47118	-0256 27	27	19	47109
47116	---	26	20	47101
47112	-0255 25	25	21	
47110	---	24	22	
47106	-0254 24	24		
47102	-0253 23	23		
4700	---	22		
	130	125	120	

22-83

W. COURTLAND

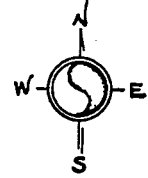
AVE.

S. E. 36-8-21
ATLAS P. 207

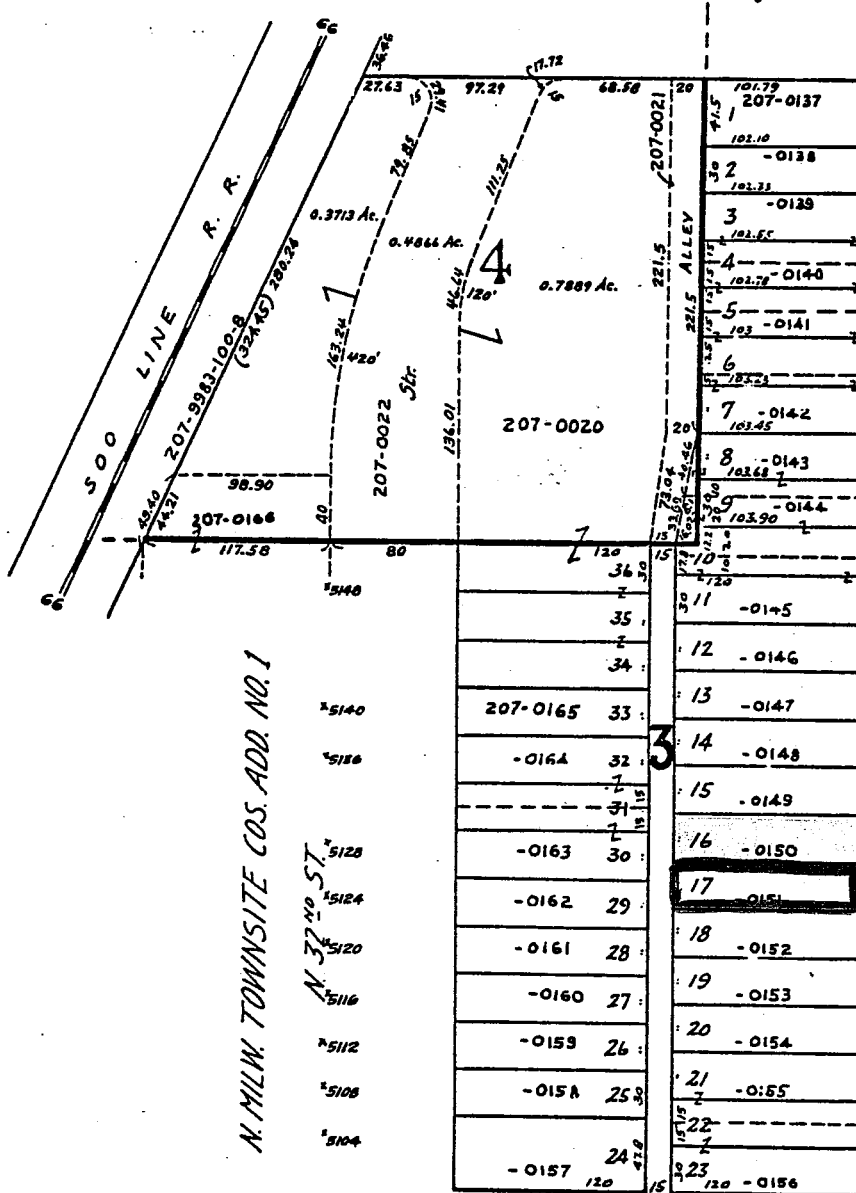
207

207-22
Scale 1"=80'

MANUFACTURING PLAT-STATE ASSESSOR'S PLAT NO 104



W. VILLARD AVE. 3101



N. MILW. TOWNSITE COS. ADD. NO. 1

N. 37th ST.
5128
5124
5120
5116
5112
5108
5104

5107
5103
5177
5175
5167
5163
5157
5151
5147
5143
5139
5135
5131
5127
5123
5119
5116
5111
5105

N. 31st ST.

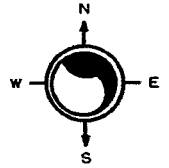
W. LANCASTER AVE.

MICROFILMED 9-15-86

NE 08-7-22
ATLAS P. 273

273

273-37
SCALE 1" = 80'



WASHINGTON PARK

N PORT WASHINGTON AV

W MELVINA ST

3896	32	24	125	32	15	32	124.10	32	3895
3892B			273-1569				273-1550	1	
3892A	30	23	273-1568	30		30	273-1551	2	3893
3892							273-1552	3	3889
3888		22					273-1553	4	3887
		21	273-1567						
3882		20	273-1566				273-1554-100-5	5	3883
3880		19	273-1565					6	
3878		18		15	15		273-1556	7	3877
3876		17	273-1564				273-1557	8	3873
3872		16	273-1563		24		273-1558	9	3871
3870					6				
3866		15	273-1562		10		273-1559	10	3867
		14			20			11	
3862		13	273-1561		10		273-1560	12	3861
3860	30		125	30	15	30	124.10	12	3861

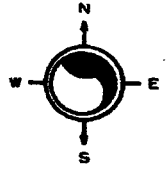
N 5TH ST

W ABERT PL

SW 05-7-22
ATLAS P. 243

243

243-17
SCALE 1" = 80'



W FIEBRANTZ AV

N 7TH ST

N 6TH ST

GROVER HEIGHTS
PEOPLES BUILDING AND LOAN
ASSOCIATION SUBDIVISION NO. 5

4094	34.86	14	120	34.86	20	34.86	120	34.86	4095
4092			243-0122				243-0111		
4090	30	13	243-0121	30		30	243-0112	30	4091A 4091
4086		12	243-0120				243-0113		4087
4082		11	243-0119				243-0114		4083
4076		10					243-0115		4077
4070	30	9	243-0118	30	15	15	243-0116	30	4073 4071
4066	30	8	243-0117	30	15	15	120	30	
4062		34	120				120		4065
4058		33	243-0758				243-0729		4063
4054A 4054		32	243-0757				243-0730		4059
4050 4048		31	243-0756			15	243-0731		
4046		30	243-0755				243-0732		4053A 4053
4042		29	243-0754				243-0733-100		4047 4047A
4038		28	243-0753						4039
4034		27	243-0752				243-0735		
4030A 4030		26	243-0751				243-0736		
4026		25	243-0750				243-0737		
4022		24	243-0749				243-0738		4027 4023
4018		23	243-0748				243-0739		
		22	243-0747				243-0740		
		21	120				120		

99.29	40	30				30	40
14.73	21	106.29				107.29	105.29
	20	19	106.29	18	106.79	17	107.29
	27	30	30	60	09	16	15
						30	30
						40.06	46

---NO VEH. ACCESS---

W CAPITOL DR