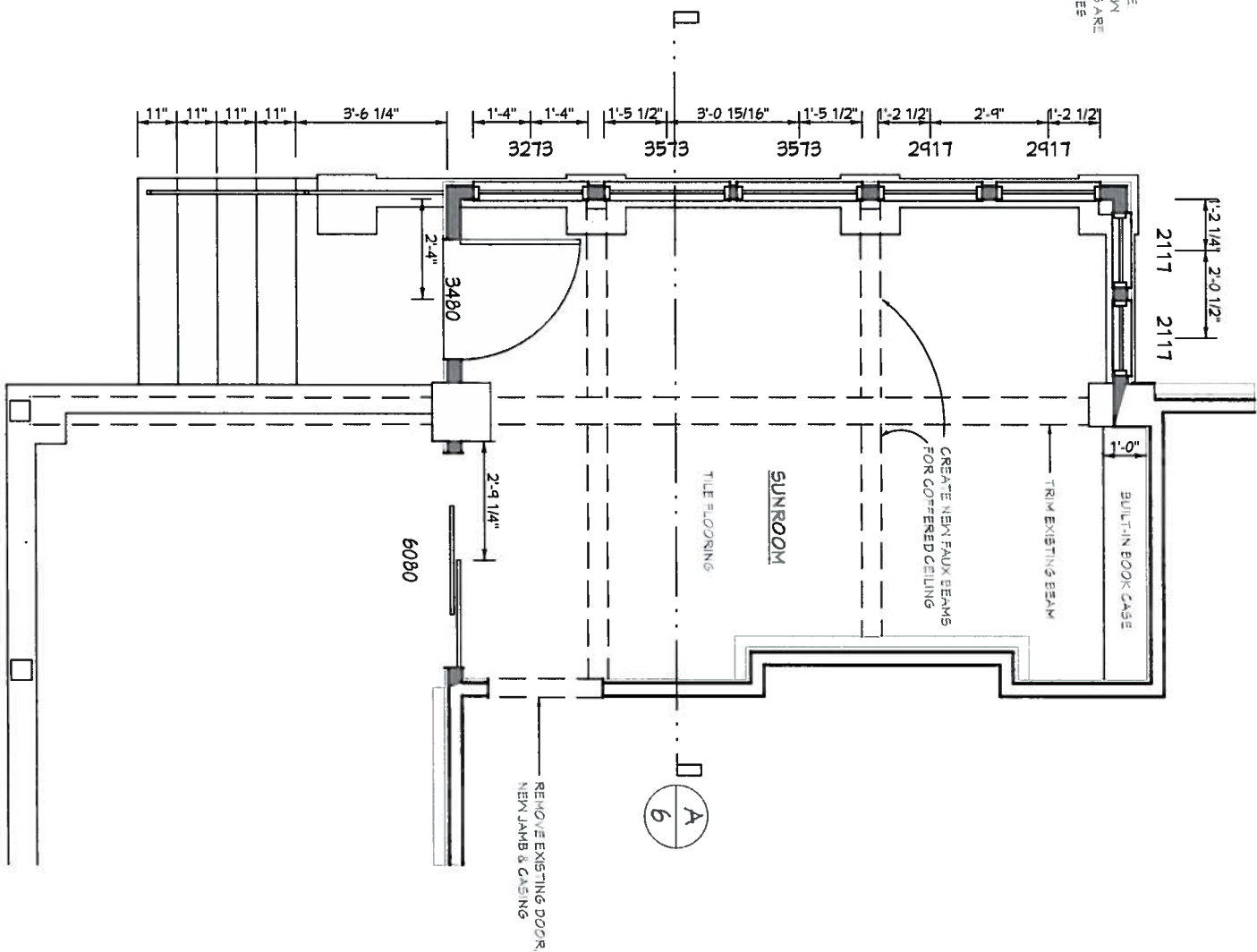
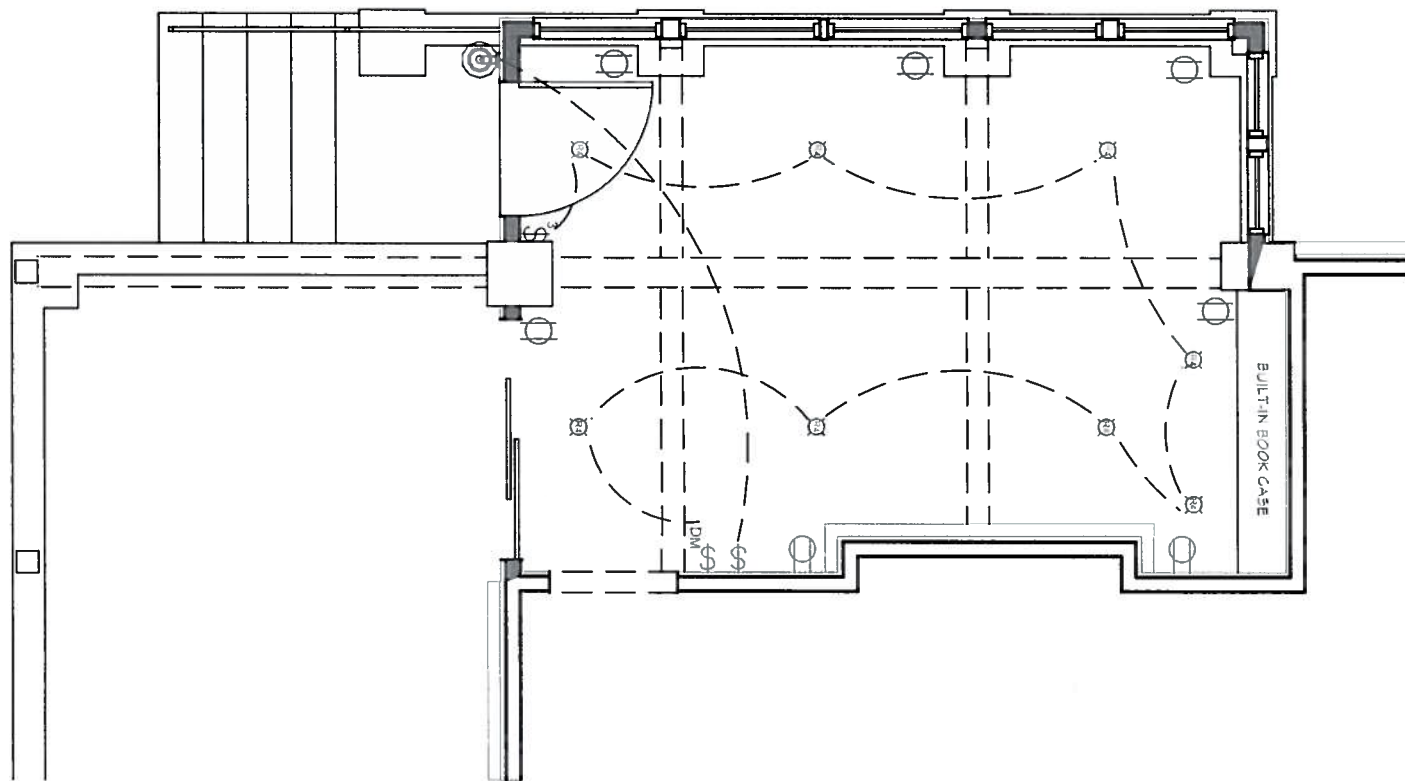


REMODELED FLOOR PLAN  
1/4"=1'-0"



REMODELED ELECTRICAL PLAN  
1/4"=1'-0"



NANCY MORGAN

2408 N. TERRACE AVE.  
MILWAUKEE, WI 53211

REVISIONS

5-15-18	

SUMMIT DESIGN

Summit Design Group, LLC

2821 North Fourth Street  
Suite 542 Dept. 27  
Milwaukee, WI 53212-2361  
Phone: 414.264.8190  
Fax: 414.264.8191

SHEET #

1

6

OF SHEETS

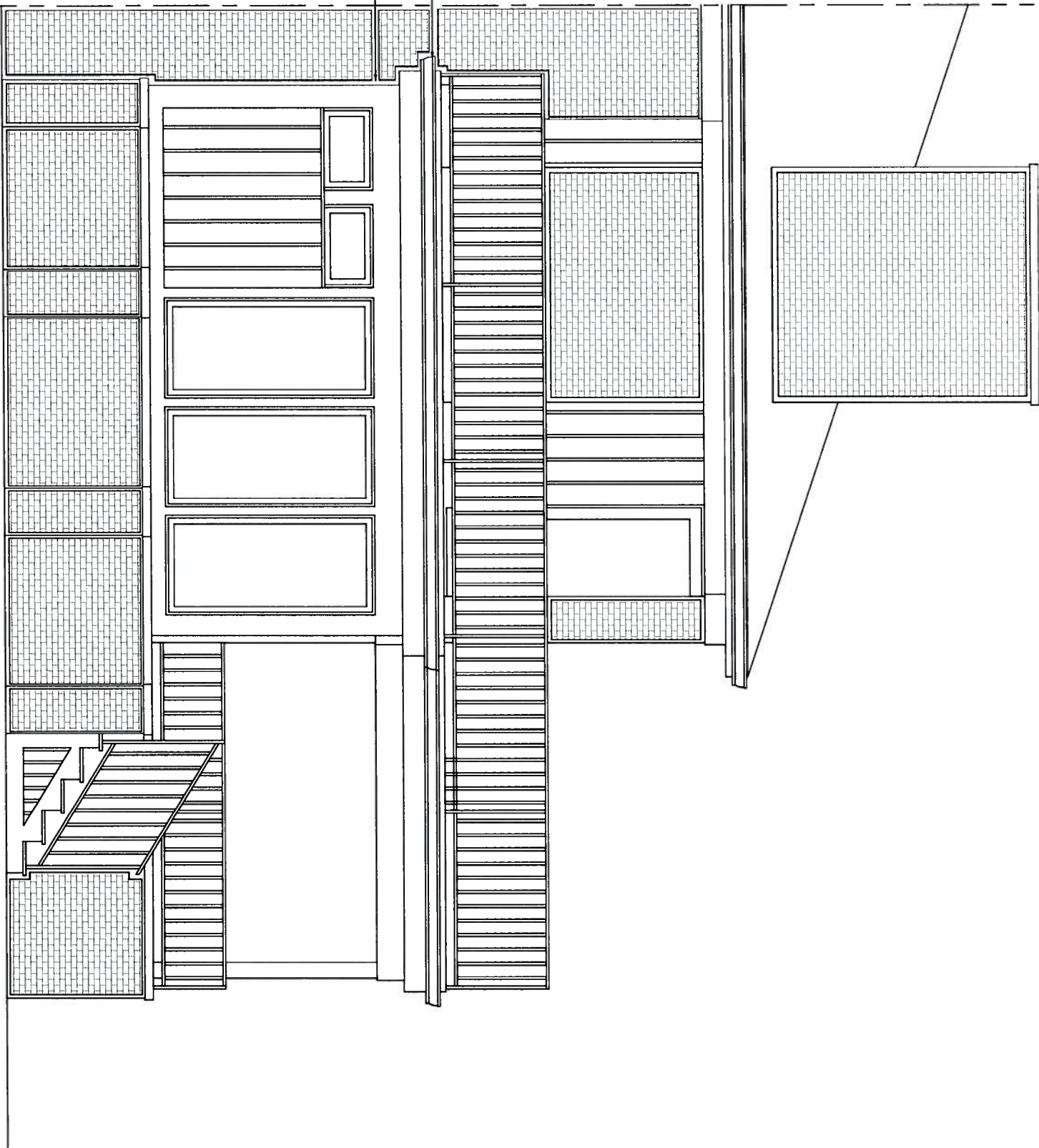
These drawings and designs therein are the exclusive property of Summit Design Group, LLC. Any use or reproduction of them without written consent from Summit Design Group, LLC will result in legal action.

All Contractors shall be responsible for meeting state and local building codes. Any discrepancies between Drawings and existing conditions shall immediately be reported to Summit Design Group, LLC.

Although every effort by Summit Design Group, LLC design staff has been made in preparing these plans and checking them for accuracy, the Contractors and/or carpenters must check all details, dimensions and structural members and be responsible for the same.

REMODELED SOUTH ELEVATION  
1/4"=1'-0"

GUTTER AND FASCIA  
TO MATCH EXISTING  
CEDAR TRIM AND  
VERTICAL SIDING  
TO MATCH EXISTING



NANCY MORGAN

2408 N. TERRACE AVE.  
MILWAUKEE, WI 53211

REVISIONS

5-15-18	

SUMMIT DESIGN

Summit Design Group, LLC

2821 North Fourth Street  
Suite 542, Dept. 27  
Milwaukee, WI 53212-2364  
Phone: 414.264.8190  
Fax: 414.264.8191

SHEET #

2

6

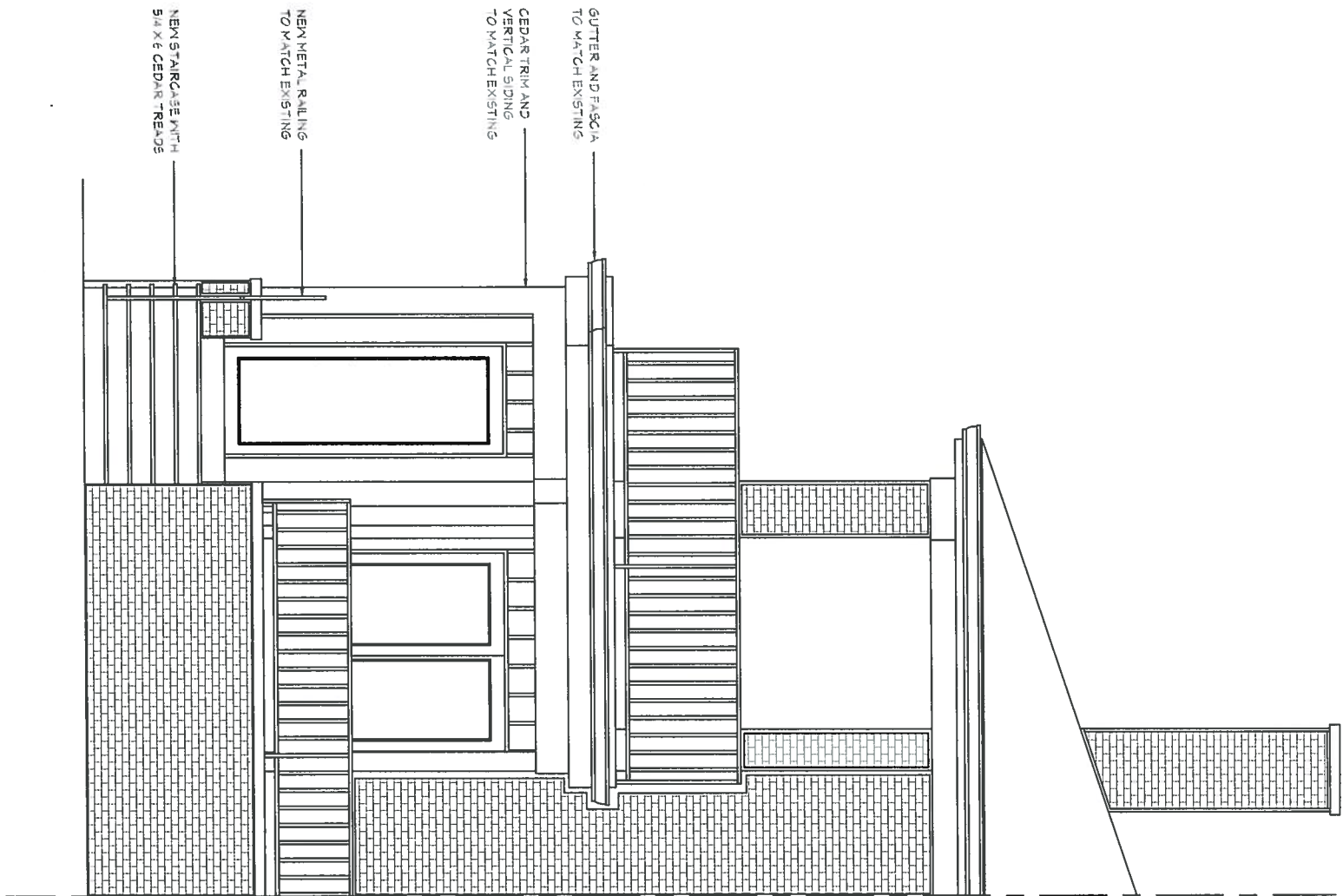
OF SHEETS

These drawings and designs therein are the exclusive property of Summit Design Group, LLC. Any use or reproduction of them without written consent from Summit Design Group, LLC will result in legal action.

All Contractors shall be responsible for meeting state and local building codes. Any discrepancies between Drawings and existing conditions shall immediately be reported to Summit Design Group, LLC.

Although every effort by Summit Design Group, LLC design staff has been made in preparing these plans and checking them for accuracy, the Contractors and/or carpenters must check all details, dimensions and structural members and be responsible for the same.

REMODELED EAST ELEVATION  
1/4"=1'-0"



NANCY MORGAN

2408 N. TERRACE AVE.  
MILWAUKEE, WI 53211

REVISIONS

5-15-18	

SUMMIT DESIGN

Summit Design Group, LLC

2821 North Fourth Street  
Suite 542, Dept. 37  
Milwaukee, WI 53212-2361  
Phone: 414.264.8190  
Fax: 414.264.8191

SHEET #

3

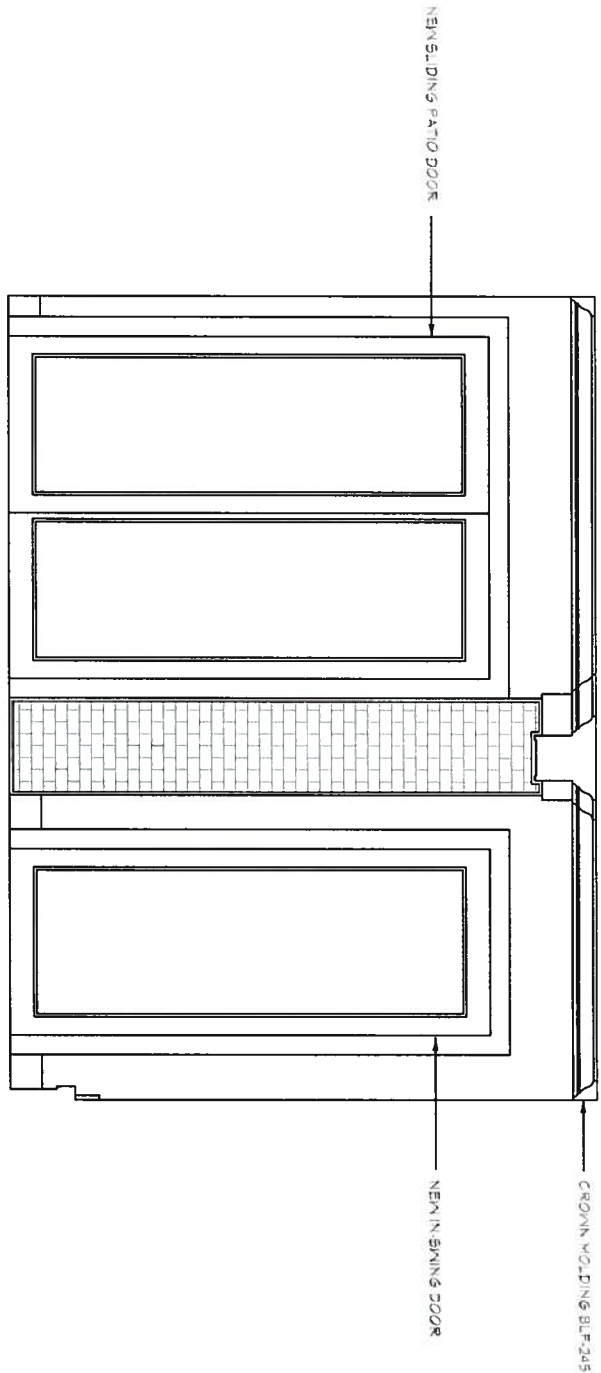
6

OF SHEETS

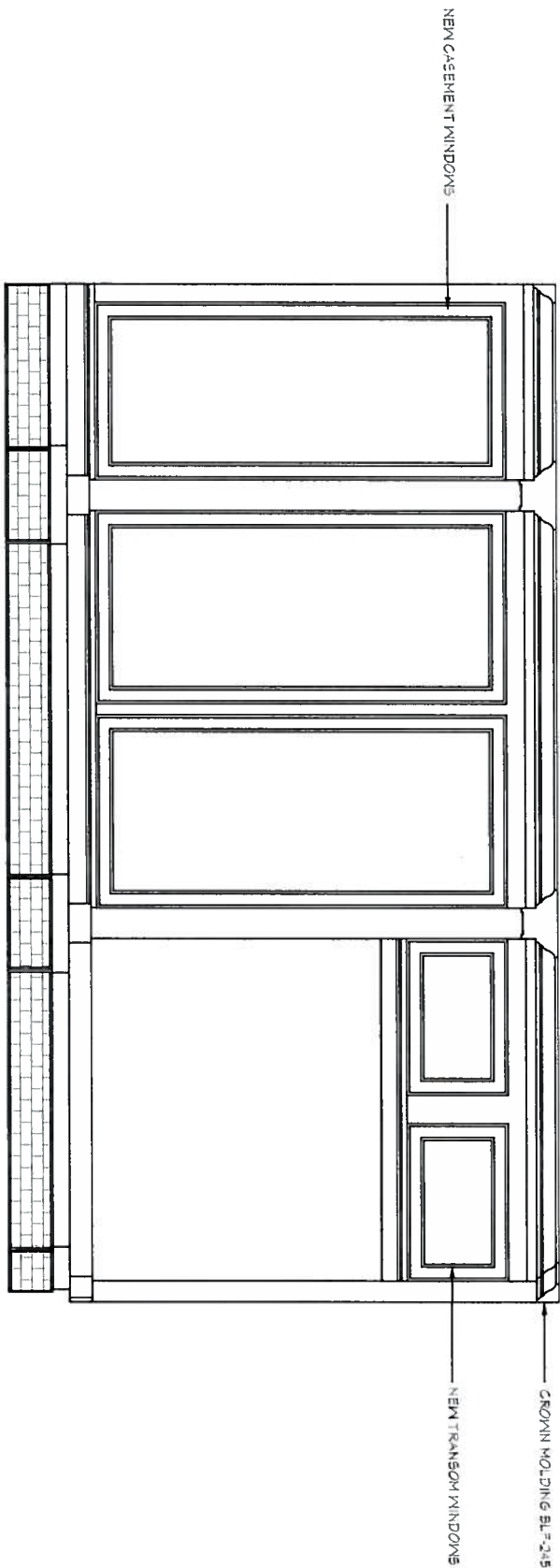
These drawings and designs therein are the exclusive property of Summit Design Group, LLC. Any use or reproduction of them without written consent from Summit Design Group, LLC will result in legal action.

All Contractors shall be responsible for meeting state and local building codes. Any discrepancies between Drawings and existing conditions shall immediately be reported to Summit Design Group, LLC.

Although every effort by Summit Design Group, LLC design staff has been made in preparing these plans and checking them for accuracy, the Contractors and/or carpenters must check all details, dimensions and structural members and be responsible for the same.



INTERIOR EAST ELEVATION  
3/8"=1'-0"



INTERIOR SOUTH ELEVATION  
3/8"=1'-0"

NANCY MORGAN  
2408 N. TERRACE AVE.  
MILWAUKEE, WI 53211

REVISIONS

5-15-18	

SUMMIT DESIGN

Summit Design Group, LLC

2821 North Fourth Street  
Suite 542 Dept. 27  
Milwaukee, WI 53212-2361  
Phone: 414.264.8190  
Fax: 414.264.8191

SHEET #

4

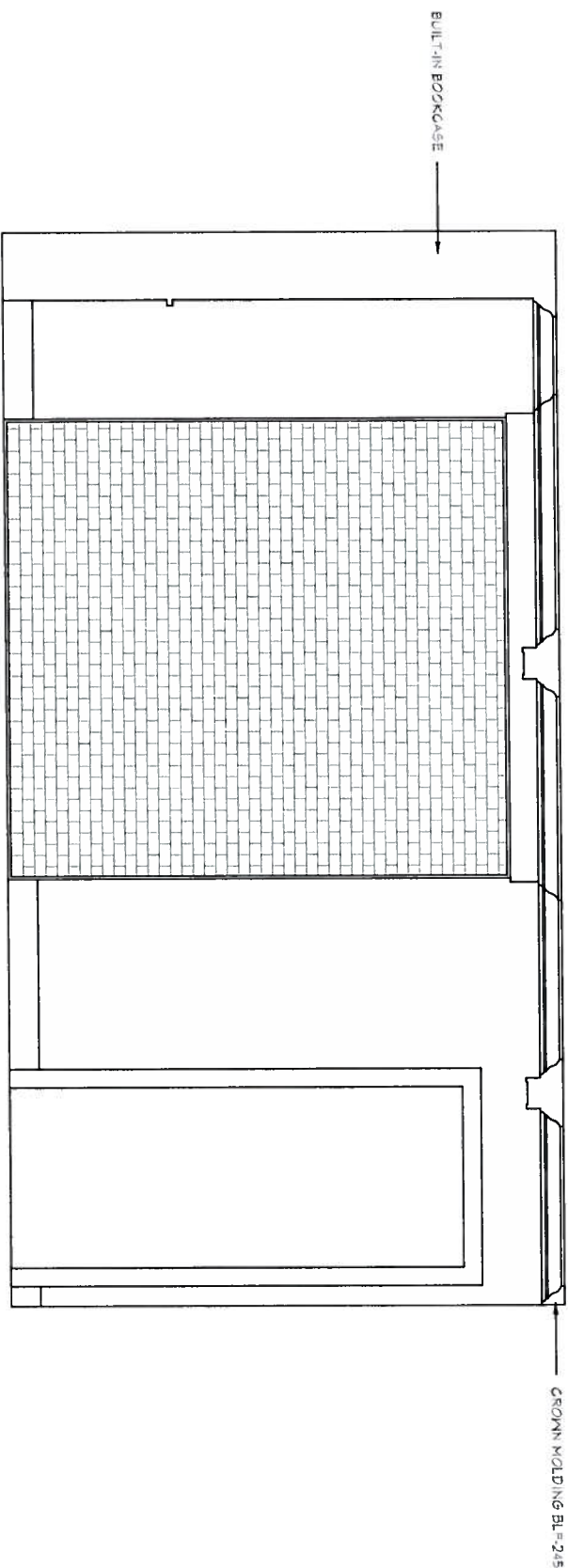
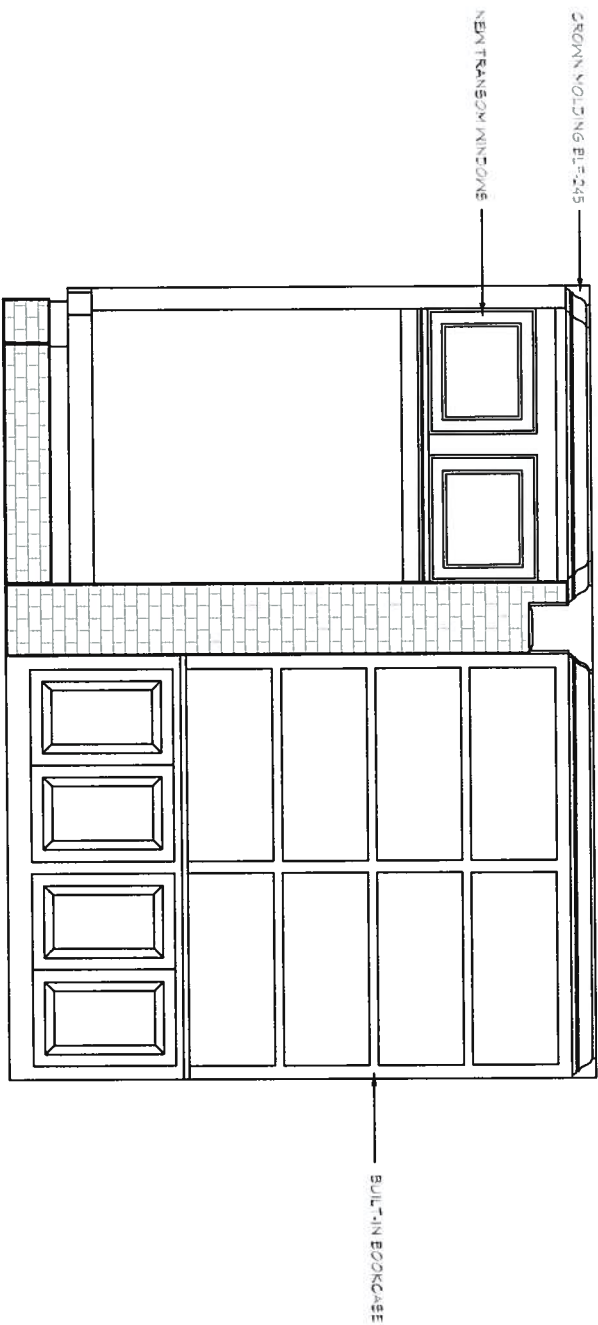
6

OF SHEETS

These drawings and designs therein are the exclusive property of Summit Design Group, LLC. Any use or reproduction of them without written consent from Summit Design Group, LLC will result in legal action.

All Contractors shall be responsible for meeting state and local building codes. Any discrepancies between Drawings and existing conditions shall immediately be reported to Summit Design Group, LLC.

Although every effort by Summit Design Group, LLC design staff has been made in preparing these plans and checking them for accuracy, the Contractors and/or carpenters must check all details, dimensions and structural members and be responsible for the same.



NANCY MORGAN

2408 N. TERRACE AVE.  
MILWAUKEE, WI 53211

REVISIONS

5-14-16	

SUMMIT DESIGN

Summit Design Group, LLC

2821 North Fourth Street  
Suite 542 Dept. 27  
Milwaukee, WI 53212-2361  
Phone: 414.264.8190  
Fax: 414.264.8191

SHEET #

5

6

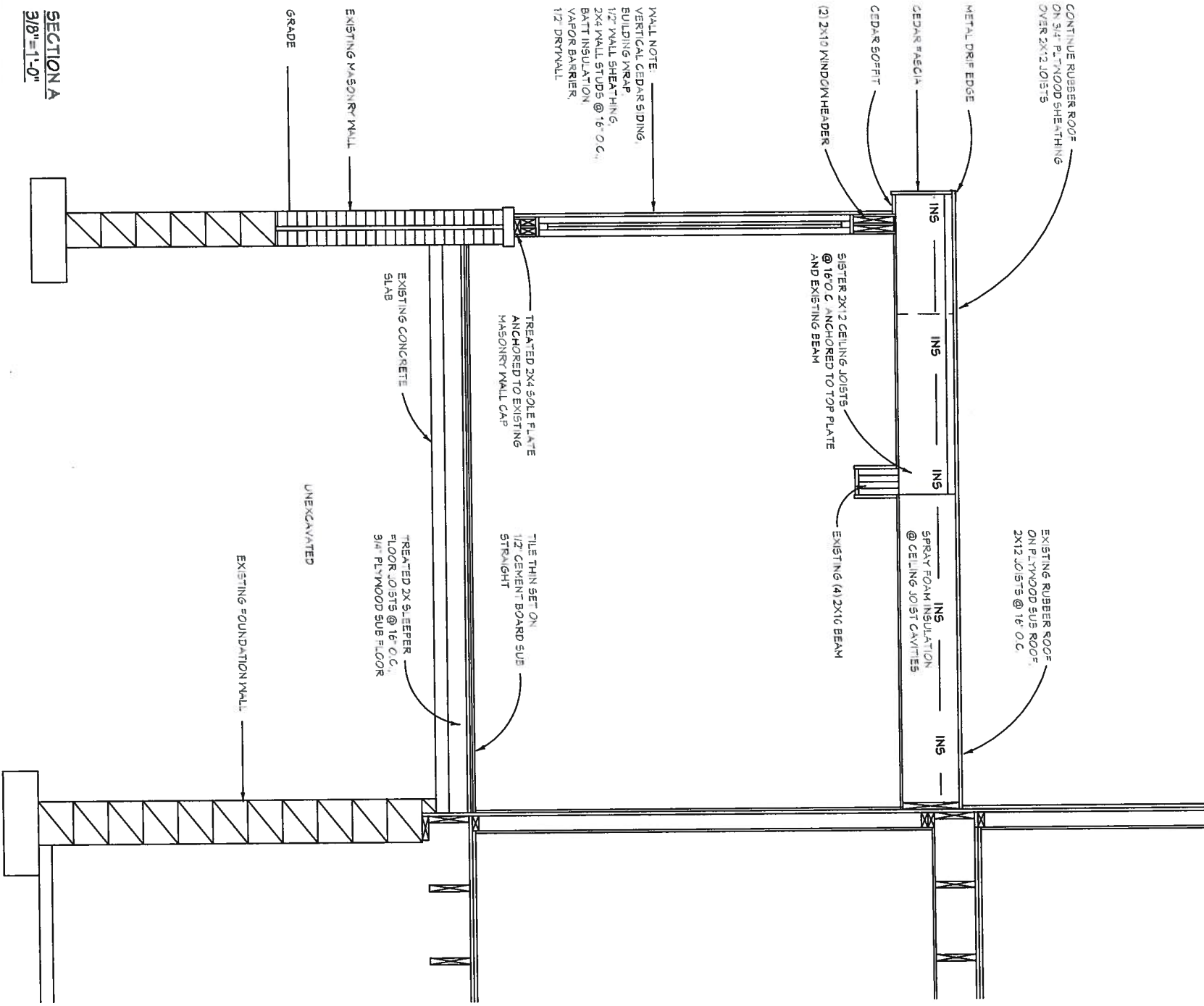
OF SHEETS

These drawings and designs therein are the exclusive property of Summit Design Group, LLC. Any use or reproduction of them without written consent from Summit Design Group, LLC will result in legal action.

All Contractors shall be responsible for meeting state and local building codes. Any discrepancies between Drawings and existing conditions shall immediately be reported to Summit Design Group, LLC.

Although every effort by Summit Design Group, LLC design staff has been made in preparing these plans and checking them for accuracy, the Contractors and/or carpenters must check all details, dimensions and structural members and be responsible for the same.





SECTION A  
3/8"=1'-0"

NANCY MORGAN  
2408 N. TERRACE AVE.  
MILWAUKEE, WI 53211

REVISIONS	
5-15-19	

SUMMIT DESIGN

Summit Design Group, LLC

2821 North Fourth Street  
Suite 543 Dept. 27  
Milwaukee, WI 53212-2364  
Phone: 414.264.8190  
Fax: 414.264.8191

SHEET #	
6	6
OF SHEETS	

These drawings and designs therein are the exclusive property of Summit Design Group, LLC. Any use or reproduction of them without written consent from Summit Design Group, LLC will result in legal action.

All Contractors shall be responsible for meeting state and local building codes. Any discrepancies between Drawings and existing conditions shall immediately be reported to Summit Design Group, LLC.

Although every effort by Summit Design Group, LLC design staff has been made in preparing these plans and checking them for accuracy, the Contractors and/or carpenters must check all details, dimensions and structural members and be responsible for the same.