

The Milwaukee Brat House, located at 1013 N. Old World 3rd Street, opened in June of 2008. When opening, we attached our projecting sign onto the existing signage bracket on the front of building. On February 14th, 2018, we were cited with an inspection report and ordered to correct the absence of a sign permit. Becoming aware of this, we are submitting documents to defining the areas and clearances of our current signage, which has been in use since our inception as a business in 2008.

The Following Exhibits are Attached for Review:

Exhibit A: Side View of Projection Sign with Area Dimension Calculations

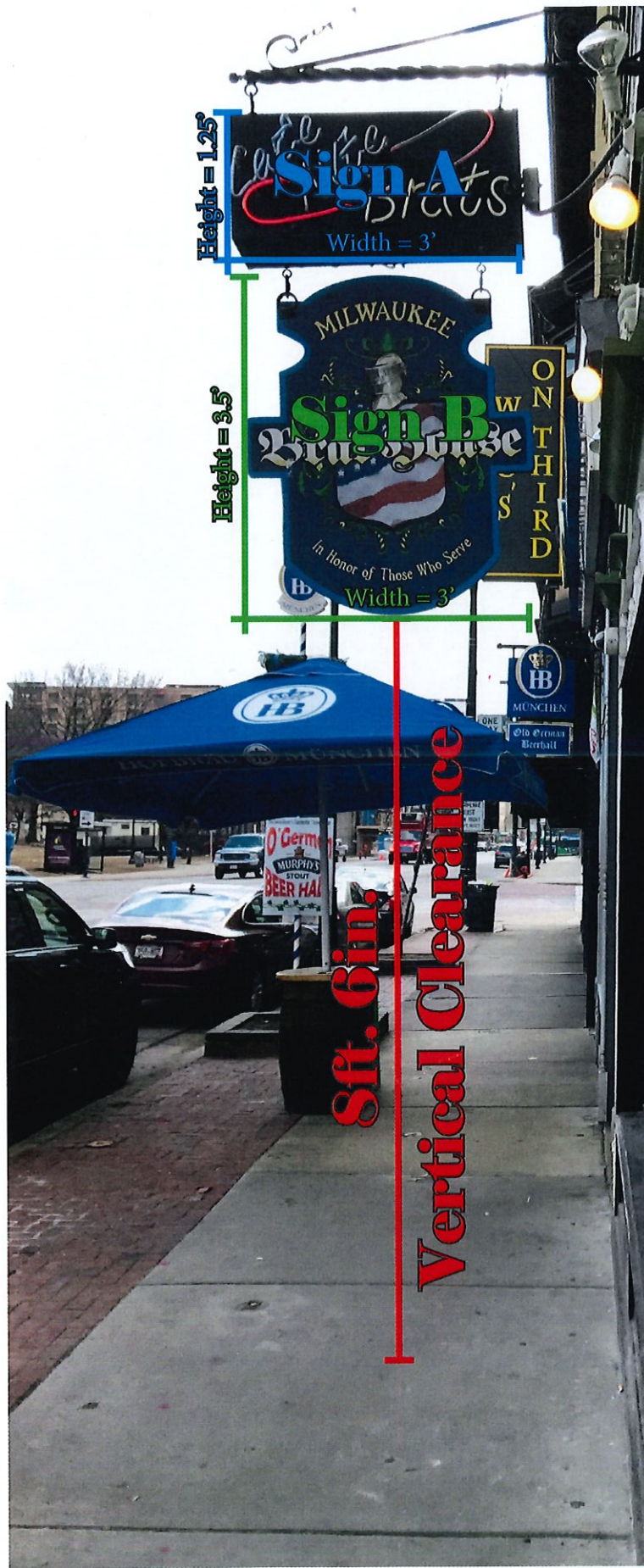
Exhibit B: Side View of Projection Sign with Ground Vertical Clearance Dimensions

Exhibit C: Area Calculation of Front Mounted Sign

Exhibit D: Rear Entrance Mounted Sign

Exhibit E: Previous Projection Sign Design (Dick Johnson's Pub – Dated February 20th 1967)

Exhibit A



Height = 1.25'

Height = 3.5'

6ft. 6in. Vertical Clearance

Sign A Area Calculations:
Area = Width X Height
Width = 3', Height = 1.25'
Sign A Area = 3'x1.25' = 3.75ft²
Sign Material: Metal with Neon

Sign B Area Calculations:
Area = Width X Height
Width = 3', Height = 3.5'
Sign A Area = 3'x3.5' = 10.5ft²
Sign Material: Wood

Total Sign Area Calculations:
Area = Sign A Area + Sign B Area
Sign A Area = 3.75ft², Sign B Area = 10.5ft²
Total Sign Area = 3.75ft² + 10.5ft² = 14.25ft²

Exhibit B



Exhibit C



Total Sign Area Calculations:
Area = Width X Height
Width = 16', Height = 2'
Total Sign Area = 16'x2' = 32ft²
Sign Material: Wood

Height = 2'

Width = 16'

MILWAUKEE BRAT HOUSE
A PROFESSIONAL DRINKING ESTABLISHMENT FOR FISHER, BARONS, BOOT LEGGERS & PATRIOTS

Beer Brats

MILWAUKEE
Brat House

Exhibit D



Total Sign Area Calculations:
Area = Width X Height
Width = 14', Height = 2'
Total Sign Area = 14'x2' = 28ft²
Sign Material: Wood

Height = 2'

Width = 14'

MILWAUKEE BRAT HOUSE
A PROFESSIONAL DINING ESTABLISHMENT FOR BEER, BODIES, BOULLETTES & PORNIES

Pabst

Miller Lite

ATM

SRO

Exhibit E

2573

EVERBRITE ELECTRIC SERVICE CO.

SEE PERMIT 163257
FEB 20, 1967

Dick Johnson
1013 N. 3rd St.
Milwaukee, Wisconsin
S-71817

~~161-E4
18" H
6 LAMPS
2 BALLASTS~~

EXISTING
SIGN

161-D6
3.5" H
2 LAMPS
1 BALLAST



10' + TO GRADE