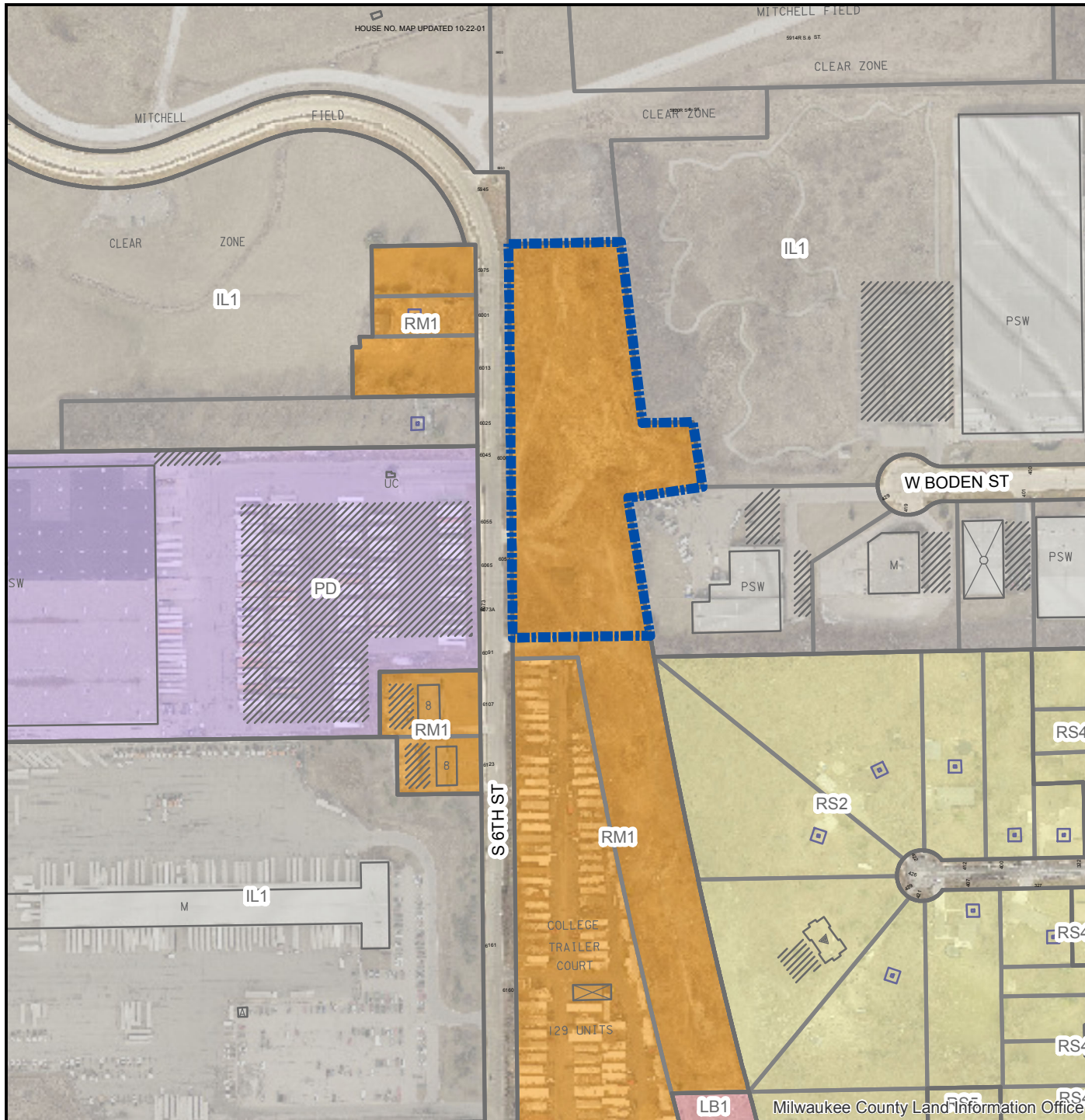




FN 171864
RM1 to IL1
Part of 6000 S. 6th St.
November 2018



Legend

 Zoning Change Boundary

Zoning

-  Commercial - Commercial Service
-  Commercial - Neighborhood Shopping
-  Commercial - Local Business
-  Commercial - Regional Business
-  Downtown
-  Industrial - Office
-  Industrial - Light
-  Industrial - Mixed
-  Industrial - Heavy
-  Residential - Single Family
-  Residential - Two Family
-  Residential - Multi-Family
-  Residential - Residence and Office
-  Special - Parks
-  Special - Institutional
-  Special - Planned Development
-  Special - Redevelopment District

