

362

S.W. 1/4 SEC. 20, T.7N., R.22E.

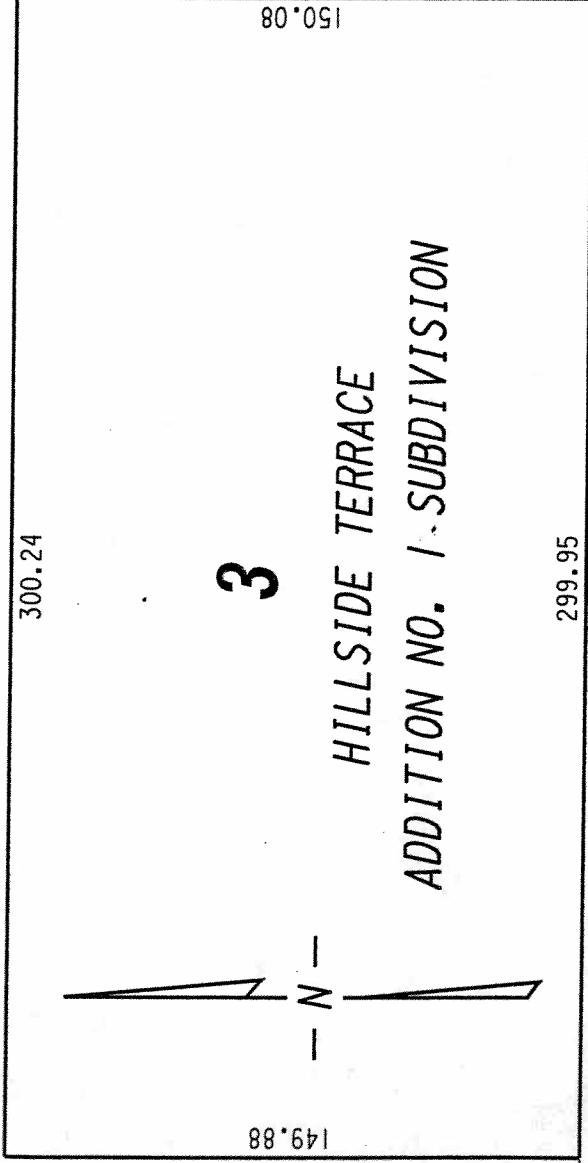
W. Vliet

(70' R.O.W.)

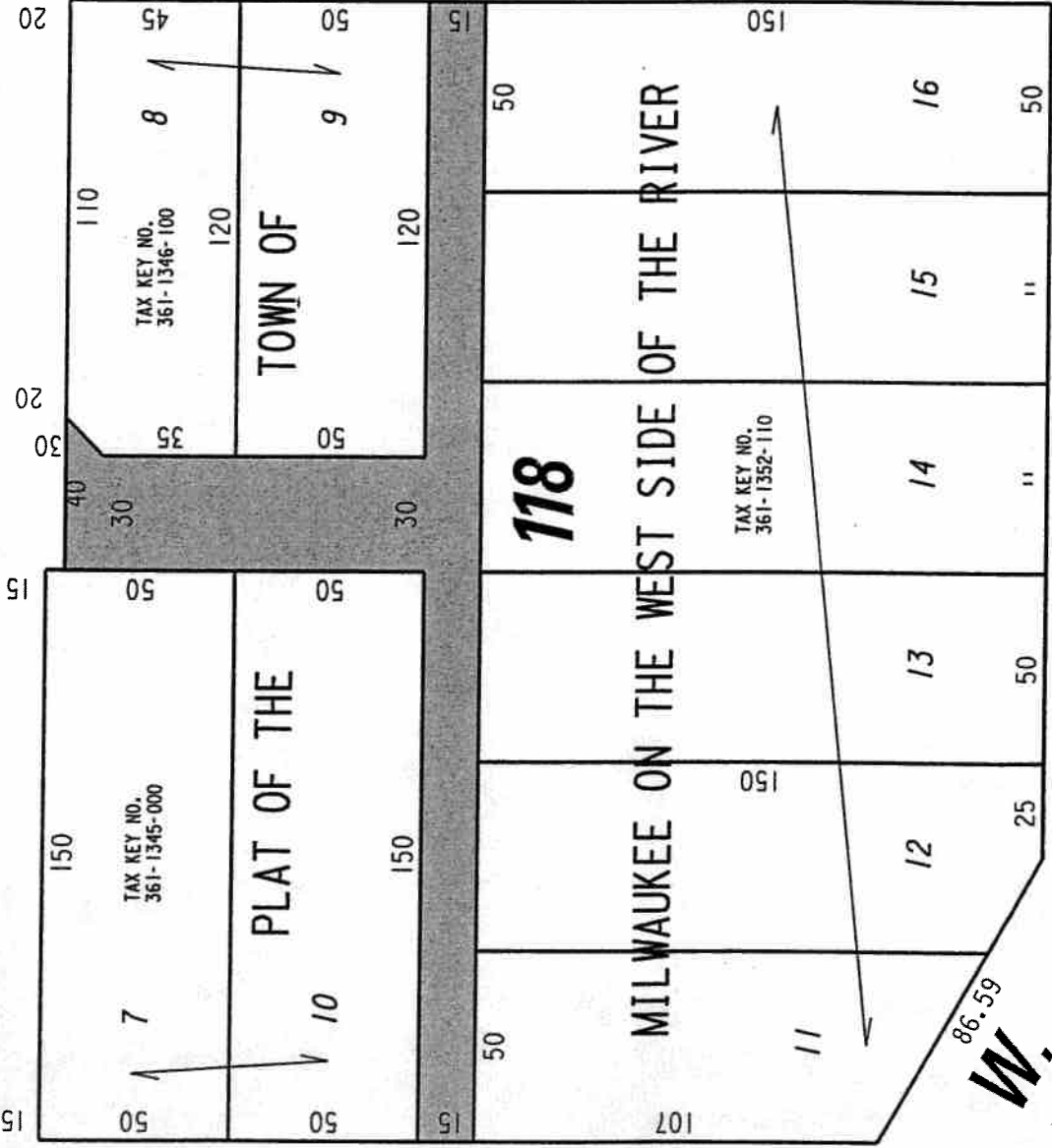
St.

St.

St.



(70' R.O.W.)



N. 8th

N. 7th

W. 86.59

McKinley

(R.O.W. VARIES)

PI.

PUBLIC ALLEYS
PROPOSED TO
BE VACATED

EXHIBIT "A"

FILE NO. 091640

INFRASTRUCTURE SERVICES DIVISION

MILWAUKEE, WISCONSIN

ASSIGNED TO: W.E. FUCHS

CH'K'D. BY: W.E. FUCHS

DRAWN BY: W.E.F.

DATE: APRIL 27, 2010

PROJECT/GRANT NO.: WK52337292

SCALE: 1"=50'

APPROVED BY:

Maissa Connell

CENTRAL DRAFTING & RECORDS MANAGER