

W. Michigan

(80' R.O.W.)

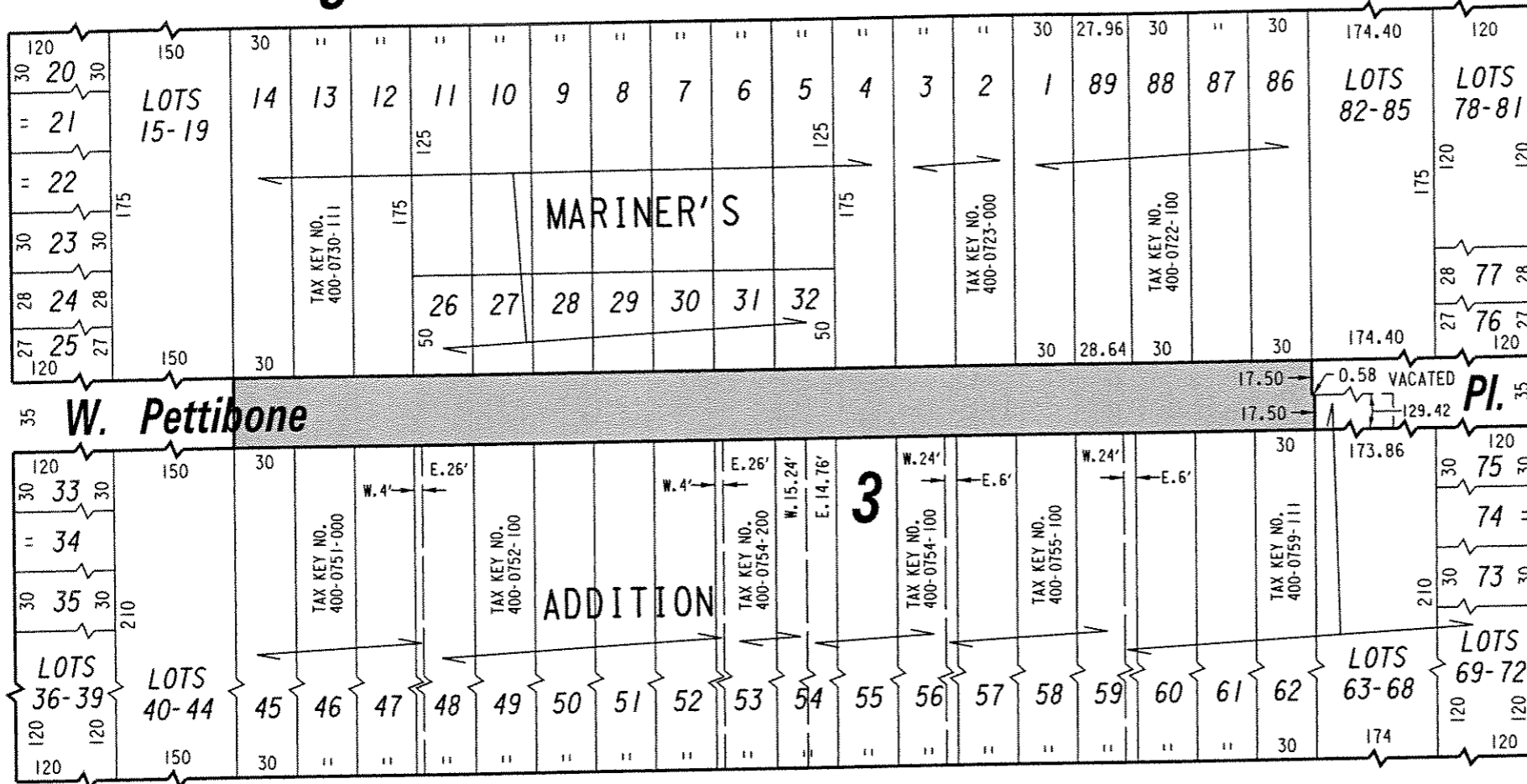
St. S.W. 1/4 SEC. 30, T.7N., R.22E.

400

St.

(66' R.O.W.)

N. 25th



St.

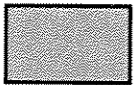
(60' R.O.W.)

N. 22nd

W. Clybourn

(80' R.O.W.)

St.



PORTION OF PUBLIC
STREET PROPOSED
TO BE VACATED

EXHIBIT "A"

FILE NO. 041697

INFRASTRUCTURE SERVICES DIVISION

MILWAUKEE, WISCONSIN

ASSIGNED TO: P.A. VELLA

CH'K'D. BY: W.E. FUCHS

DRAWN BY: P.A.V.

DATE: NOV. 14, 2005

PROJECT/GRANT NO.: WK52337217

SCALE: 1" = 80'

APPROVED BY:

maria Rindholm
CENTRAL DRAFTING & RECORDS MANAGER

[Signature]
CITY ENGINEER