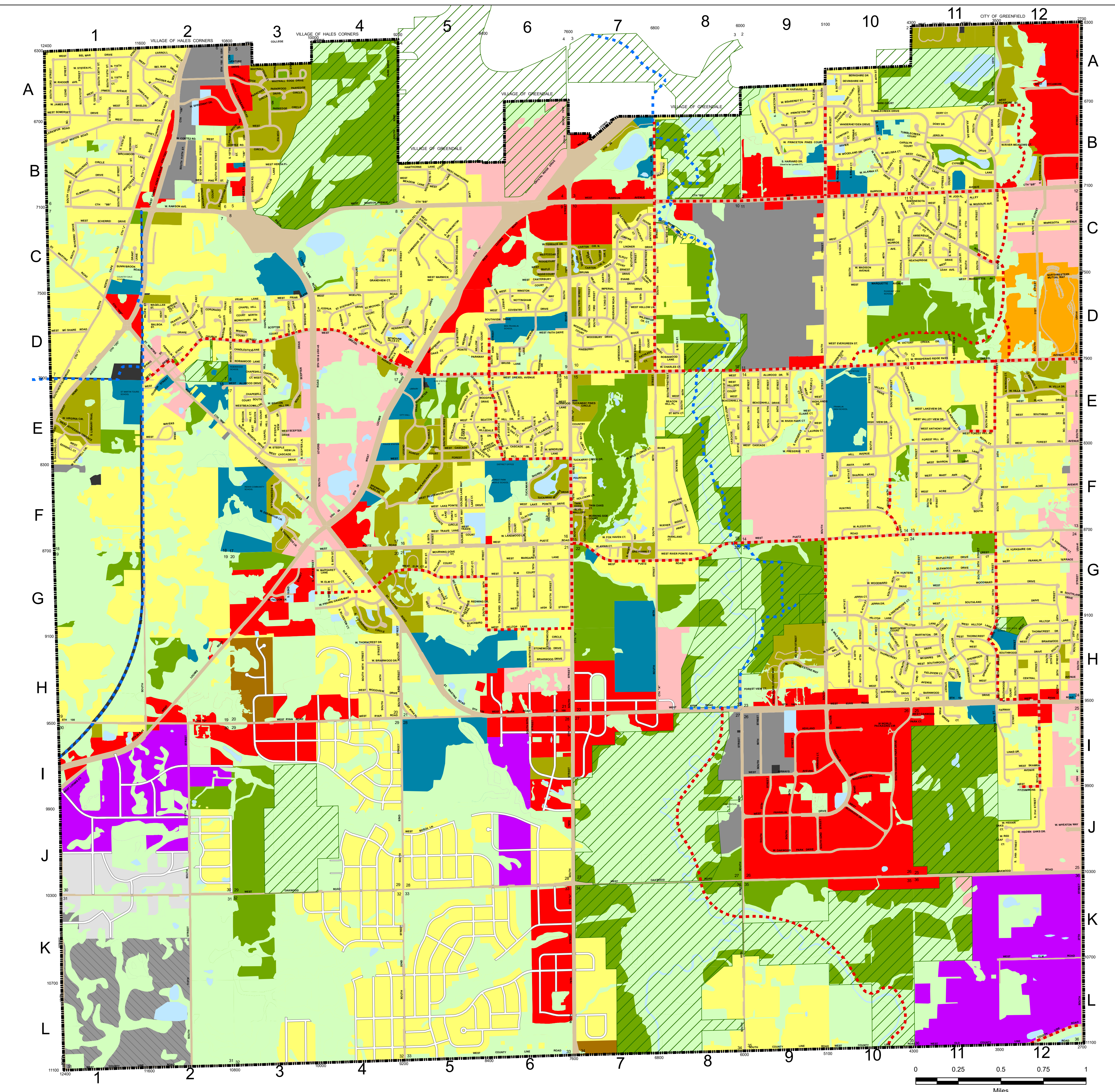


# Future Land Use Map 2025



## Legend

- Areas of Natural Resource Features
- Future Land Use**
- Agricultural
- Business Park
- Commercial
- Communication and Utilities
- Industrial
- Institutional
- Landfill
- Light Manufacturing
- Mixed Use
- Office
- Recreational
- Residential
- Residential - Multi-Family
- Transportation
- Water
- Future Roads (SW Plan)
- ROW (current)
- Milwaukee County Parkway
- Existing Trail
- Proposed Trail

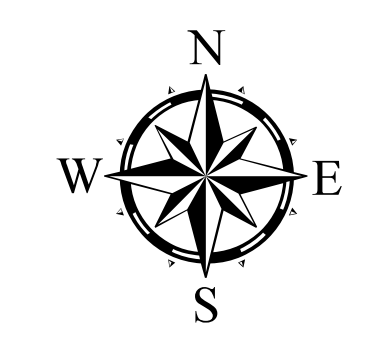
Notes:

Updated - June 2017

The quarry area has been identified as a Potential Development Area. However, it is anticipated that any development / redevelopment of this area will not occur until after cessation of the extraction activities (envisioned to occur after the time-frame of this plan). Such development / redevelopment is to occur in accord with such provisions as set forth in Ordinance No. 97-1456 as may be amended.

Disclaimer:

The information depicted on this map was compiled from a variety of sources, including photogrammetric means. This map is not intended for use as a legal document; and official map documents, including certified survey maps, plats of survey, flood insurance studies, or other similar documents should be consulted when attempting to locate features on a site or property or when precise accuracy is required.



**City of Franklin**  
 GIS Department  
 9229 W. Loomis Rd.  
 Franklin, WI 53132  
 www.franklinwi.gov