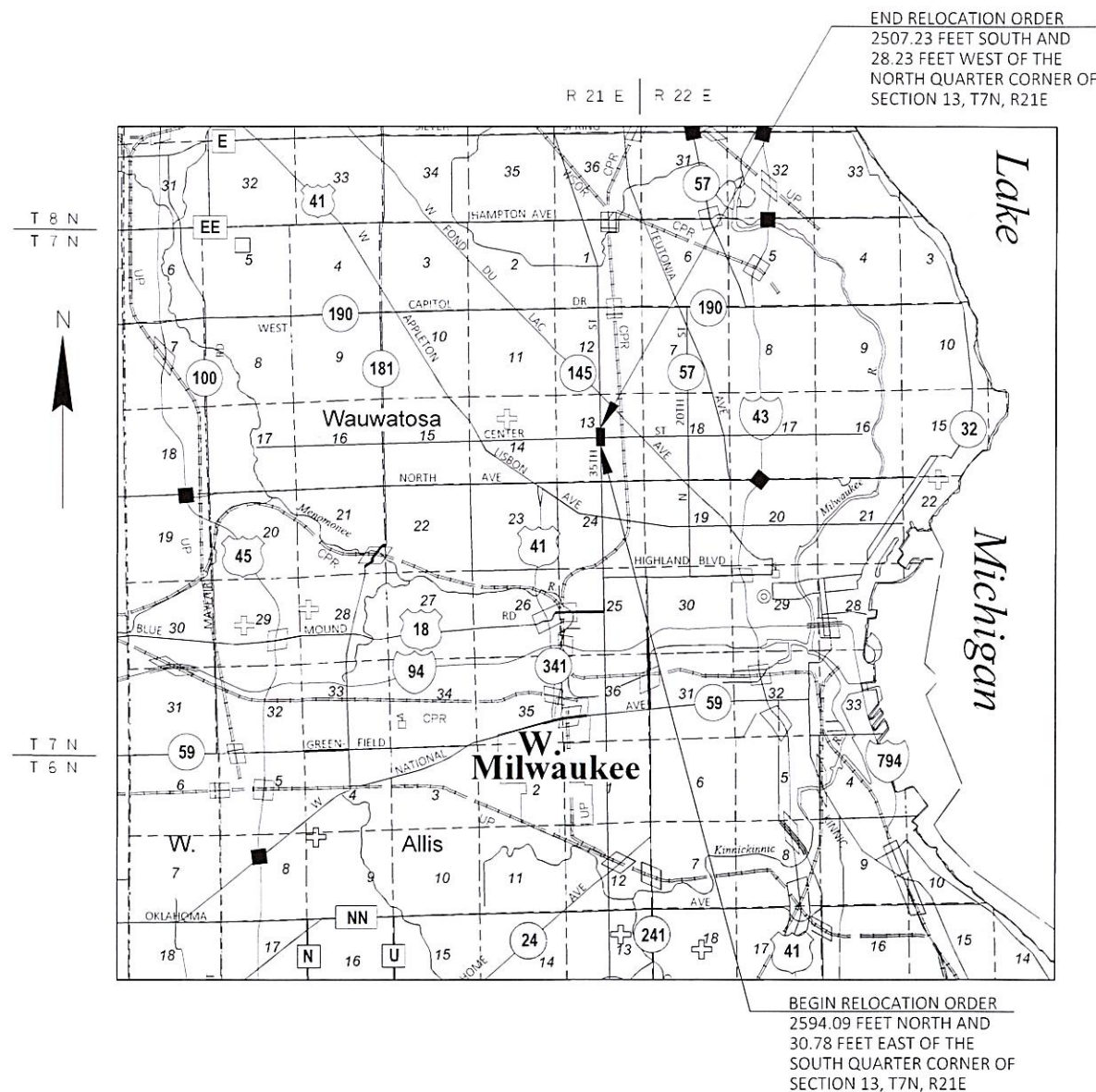


CONVENTIONAL SYMBOLS			
SECTION LINE	---	SECTION CORNER SYMBOL	
QUARTER LINE	---	R/W MONUMENT (TO BE SET)	●
SIXTEENTH LINE	---	NON-MONUMENTED R/W POINT	○
NEW REFERENCE LINE	---	FOUND IRON PIN (1-INCH UNLESS NOTED)	IP
NEW R/W LINE	---	SECTION CORNER MONUMENT	
EXISTING R/W OR HE LINE	---	GEODETIC SURVEY MONUMENT	
PROPERTY LINE	---	SIXTEENTH CORNER MONUMENT	
LOT, TIE & OTHER MINOR LINES	---	SIGN	
SLOPE INTERCEPT	---	OFF-PREMISE SIGN	
CORPORATE LIMITS	---	COMPENSABLE	
UNDERGROUND FACILITY (COMMUNICATIONS, ELECTRIC, ETC.)	---	NON-COMPENSABLE	
NEW R/W (FEE OR HE) (HATCHING VARIES BY OWNER)	---	ELECTRIC POLE	
TEMPORARY LIMITED EASEMENT AREA	---	TELEPHONE POLE	
EASEMENT AREA (PERMANENT LIMITED OR RESTRICTED DEVELOPMENT)	---	PEDESTAL (LABEL TYPE) (TV, TEL, ELEC, ETC.)	
TRANSMISSION STRUCTURES	---	ACCESS RESTRICTED BY ACQUISITION	---
BUILDING TO BE REMOVED	---	NO ACCESS (BY STATUTORY AUTHORITY)	---
BRIDGE	---	ACCESS RESTRICTED (BY PREVIOUS PROJECT OR CONTROL)	---
CULVERT	---	NO ACCESS (NEW HIGHWAY)	---
		PARCEL NUMBER (25)	
		UTILITY NUMBER (40)	
		PARALLEL OFFSETS	

CONVENTIONAL UTILITY SYMBOLS	
WATER	---
GAS	---
TELEPHONE	---
OVERHEAD TRANSMISSION LINES	---
ELECTRIC	---
CABLE TELEVISION	---
FIBER OPTIC	---
SANITARY SEWER	---
STORM SEWER	---
ELECTRIC TOWER	---

CONVENTIONAL ABBREVIATIONS			
ACCESS RIGHTS	AR	POINT OF INTERSECTION	PI
ACRES	AC	PROPERTY LINE	PL
AHEAD	AH	RECORDED AS	(100')
ALUMINUM	ALUM	REEL / IMAGE	R/I
AND OTHERS	ET AL	REFERENCE LINE	R/L
BACK	BK	REMAINING	REM
BLOCK	BLK	RESTRICTIVE DEVELOPMENT	RDE
CENTERLINE	C/L	EASEMENT	
CERTIFIED SURVEY MAP	CSM	RIGHT	RT
CONCRETE	CONC	RIGHT OF WAY	R/W
COUNTY	CO	SECTION	SEC
COUNTY TRUNK HIGHWAY	CTH	SEPTIC VENT	SEP V
DISTANCE	DIST	SQUARE FEET	SF
CORNER	COR	STATE TRUNK HIGHWAY	STH
DOCUMENT NUMBER	DOC	STATION	STA
EASEMENT	EASE	TELEPHONE PEDESTAL	TP
EXISTING	EX	TEMPORARY LIMITED	TLE
GAS VALVE	GV	EASEMENT	
GRID NORTH	GN	TRANSPORTATION PROJECT	TPP
HIGHWAY EASEMENT	HE	PLAT	
IDENTIFICATION	ID	UNITED STATES HIGHWAY	USH
LAND CONTRACT	LC	VOLUME	V
LEFT	LT		
MONUMENT	MON		
NATIONAL GEODETIC SURVEY	NGS		
NUMBER	NO		
OUTLOT	OL		
PAGE	P		
POINT OF TANGENCY	PT		
PERMANENT LIMITED EASEMENT	PLE		
POINT OF BEGINNING	POB		
POINT OF CURVATURE	PC		
POINT OF COMPOUND CURVE	PCC		

CURVE DATA			
LONG CHORD	LCH		
LONG CHORD BEARING	LCB		
RADIUS	R		
DEGREE OF CURVE	D		
CENTRAL ANGLE	Δ/DELTA		
LENGTH OF CURVE	L		
TANGENT	T		
DIRECTION AHEAD	DA		
DIRECTION BACK	DB		



LAYOUT
SCALE 0 1 MI.
TOTAL NET LENGTH OF CENTERLINE = 0.06 MILES

THIS PLAT IS A GRAPHIC REPRESENTATION AND IS FOR REFERENCE PURPOSES ONLY. DEEDS MUST BE CHECKED TO DETERMINE PROPERTY BOUNDARIES AND ACCESS RIGHTS.

R/W PROJECT NUMBER 2984-21-01	SHEET NUMBER 4.01	TOTAL SHEETS
FEDERAL PROJECT NUMBER		
PLAT OF RIGHT OF WAY REQUIRED FOR NORTH 35TH STREET INTERSECTION WITH W. CENTER ST.		
NORTH 35TH STREET		MILWAUKEE COUNTY
CONSTRUCTION PROJECT NUMBER 2984-21-71		

NOTES:

POSITIONS SHOWN ON THIS PLAT ARE WISCONSIN COORDINATE REFERENCE SYSTEM COORDINATES (WISCRS), MILWAUKEE COUNTY, NAD83(2011), IN U.S. SURVEY FEET. VALUES ARE GRID COORDINATES, GRID BEARINGS, AND GRID DISTANCES. GRID DISTANCES MAY BE USED AS GROUND DISTANCES.

ALL NEW RIGHT-OF-WAY MONUMENTS WILL BE TYPE 2 (TYPICALLY 3/4" X 24" IRON REBARS), UNLESS OTHERWISE NOTED, AND WILL BE PLACED PRIOR TO THE COMPLETION OF THE PROJECT.

ALL RIGHT-OF-WAY LINES DEPICTED IN THE NON-ACQUISITION AREAS ARE INTENDED TO RE-ESTABLISH EXISTING RIGHT-OF-WAY LINES AS DETERMINED FROM PREVIOUS PROJECTS, OTHER RECORDED DOCUMENTS, CENTERLINE OF EXISTING PAVEMENTS AND/OR EXISTING OCCUPATIONAL LINES.

RIGHT-OF-WAY BOUNDARIES ARE DEFINED WITH COURSES OF THE PERIMETER OF THE HIGHWAY LANDS REFERENCED TO THE U.S. PUBLIC LAND SURVEY SYSTEM OR OTHER "SURVEYS" OF PUBLIC RECORD.

DIMENSIONING FOR THE NEW RIGHT-OF-WAY IS MEASURED ALONG AND PERPENDICULAR TO THE NEW REFERENCE LINES.

A TEMPORARY LIMITED EASEMENT (TLE) IS A RIGHT FOR CONSTRUCTION PURPOSES, AS DEFINED HEREIN, INCLUDING THE RIGHT TO OPERATE NECESSARY EQUIPMENT THEREON, THE RIGHT OF INGRESS AND EGRESS, AS LONG AS REQUIRED FOR SUCH PUBLIC PURPOSE, INCLUDING THE RIGHT TO PRESERVE, PROTECT, REMOVE, OR PLANT THEREON ANY VEGETATION THAT THE HIGHWAY AUTHORITIES MAY DEEM DESIRABLE. ALL (TLEs) ON THIS PLAT EXPIRE AT THE COMPLETION OF THE CONSTRUCTION PROJECT FOR WHICH THIS INSTRUMENT IS GIVEN.

PROPERTY LINES SHOWN ON THIS PLAT FOR PROPERTIES BEING IMPACTED ARE DRAWN FROM DATA DERIVED FROM FILED/RECORDED MAPS AND DOCUMENTS OF PUBLIC RECORD. THIS PLAT MAY NOT BE A TRUE REPRESENTATION OF EXISTING PROPERTY LINES, EXCLUDING RIGHT-OF-WAY, AND SHOULD NOT BE USED AS A SUBSTITUTE FOR AN ACCURATE FIELD SURVEY.

FOR THE CURRENT ACCESS/DRIVEWAY INFORMATION, CONTACT THE PLANNING UNIT OF THE WISCONSIN DEPARTMENT OF TRANSPORTATION OFFICE IN WAUKESHA.

PARCEL AND UTILITY IDENTIFICATION NUMBERS MAY NOT POINT TO ALL AREAS OF ACQUISITION, AS NOTED ON THE DETAIL PAGES.

INFORMATION FOR THE BASIS OF EXISTING HIGHWAY RIGHT-OF-WAY POINTS OF REFERENCE AND ACCESS CONTROL ARE LISTED ON THE DETAIL PAGES.



REVISION DATE 2/26/25 3/12/25	CITY OF MILWAUKEE
APPROVED FOR THE CITY DATE 3-14-25 James Washington (Signature)	

