



City of Milwaukee

Daten elm 3 1/2 feet

from sewer line +

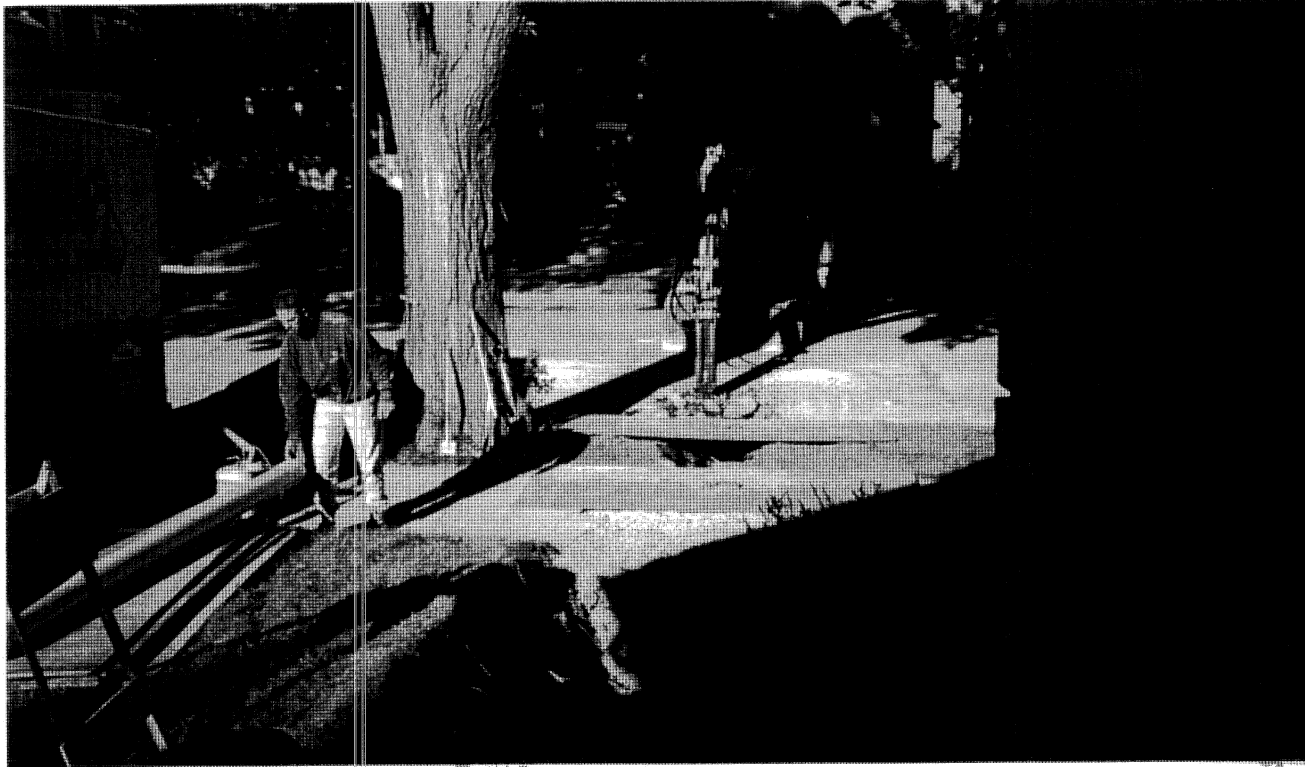
8 feet from orange dot  
or end of collapsed

pipe

SEP/08 10838-178 < 6 > SPK

SEP/08

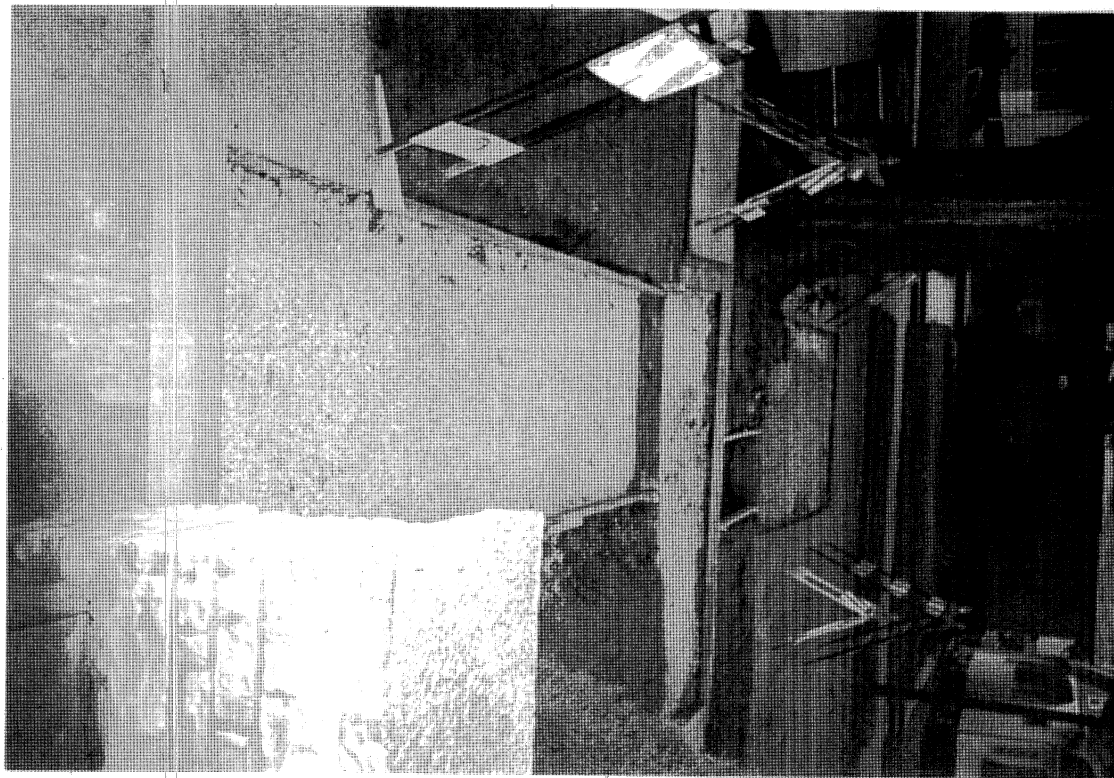




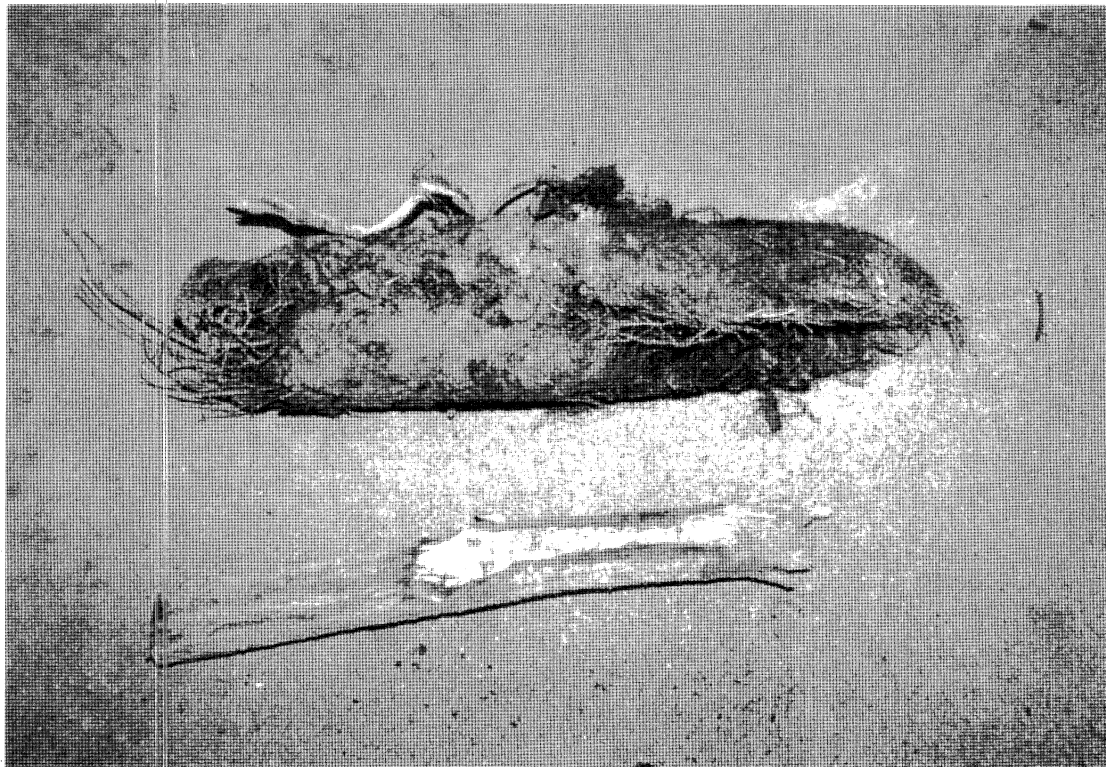
Sidewalk and street excavated  
for repairs

ID838-178 (14) SPK

SEP/84







3 in root found

running along clay  
pipe under ~~over~~

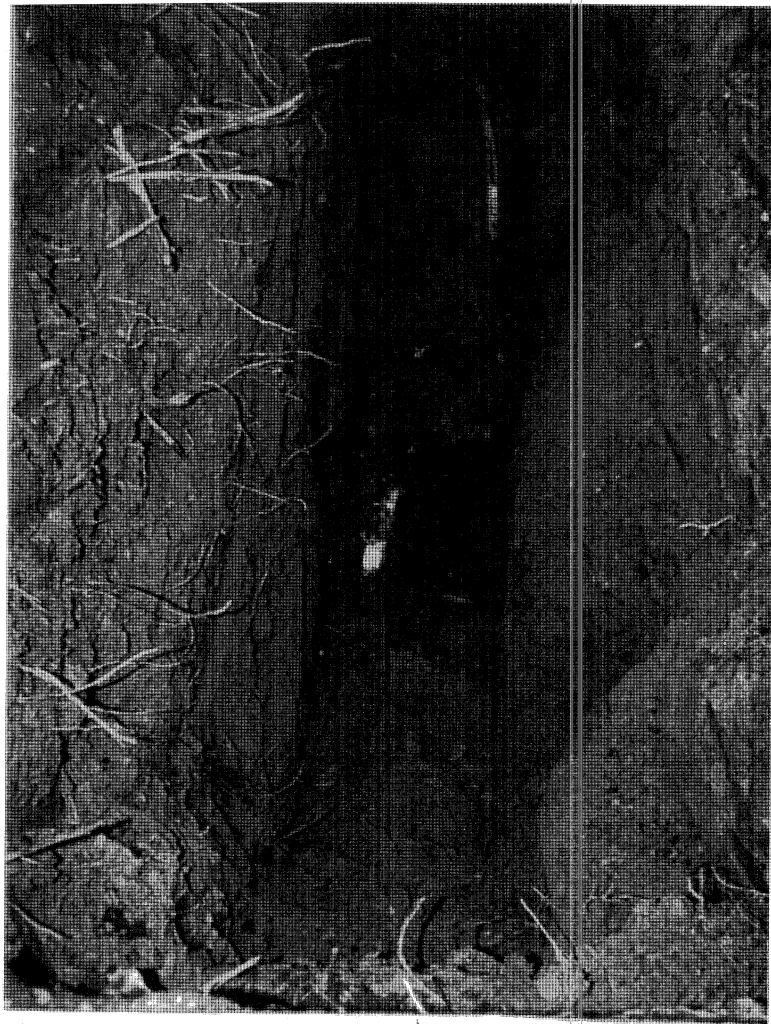
owner's sidewalk

SEP 98 10838-178 <25> SPK

6 inch root found

over clay pipe under

city sidewalk



Kodak

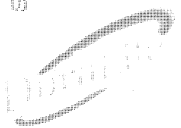
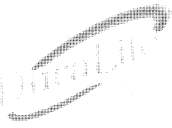
10858-178 <11 SPK

clay pipe

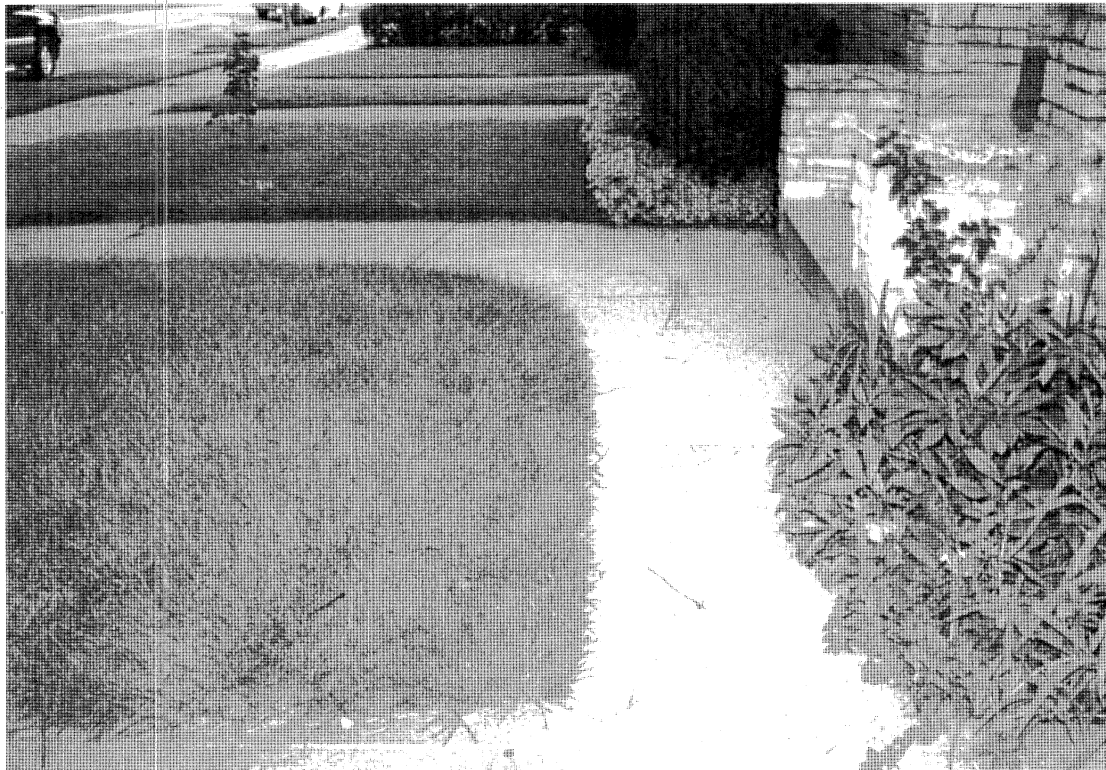
3 mch roof  
running alongside

Kodak

SEP-90



END OF Collapsed Pipe







New PVC pipe had  
to be rerouted to prevent  
damage to tree  
root per city of Milwaukee

SEP/88 0638-178 (24) SPK

Duralife

Duralife

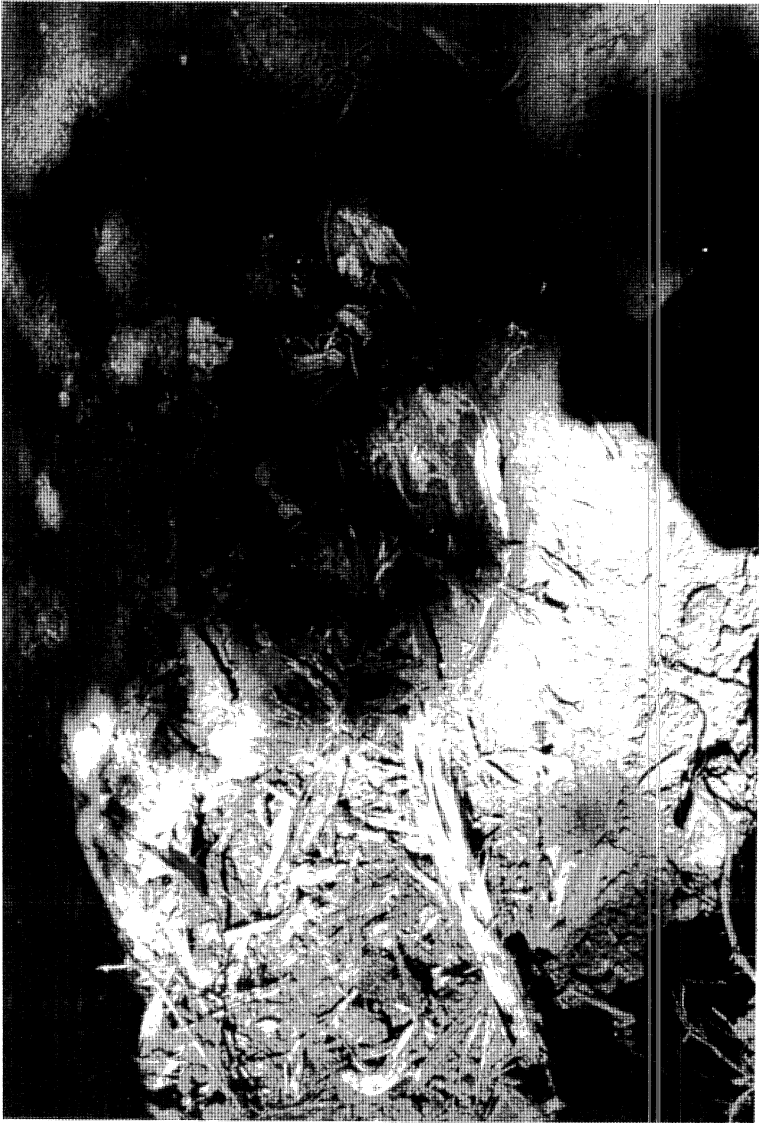
Duralife



Orange dot end of  
 collapsed pipe from  
 owner's end - rest of pipe  
 collapsed out from  
 orange dot &

starts  
 City of Milwaukee  
 Dutch elm

App 36 inch bare & over 60 ft  
 in height



1008

Kodak

tree, sidewalk +  
excavated for  
repair

