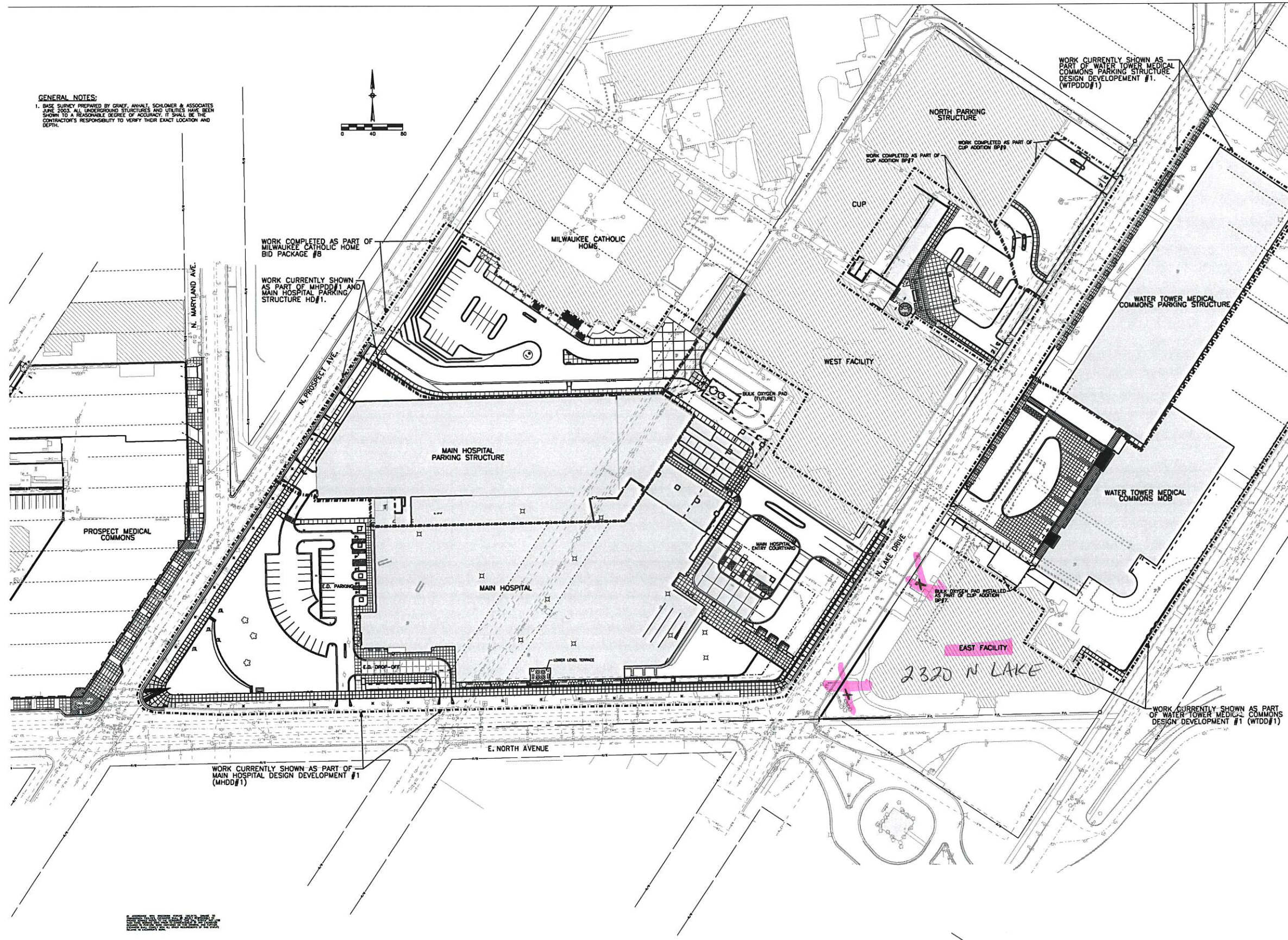
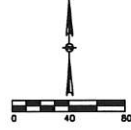


**GENERAL NOTES:**  
 1. BASE SURVEY PREPARED BY GRNEY, ANHALT, SCHLOMER & ASSOCIATES  
 SINCE 2003. ALL UNDERGROUND STRUCTURES AND UTILITIES HAVE BEEN  
 SHOWN TO A REASONABLE DEGREE OF ACCURACY. IT SHALL BE THE  
 CONTRACTOR'S RESPONSIBILITY TO VERIFY THEIR EXACT LOCATION AND  
 DEPTH.

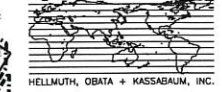


Columbia St. Mary's  
 A Passion for Patient Care

Project Scope  
 COLUMBIA ST. MARY'S HOSPITAL  
 ST. MARY'S HOSPITAL  
 2323 NORTH LAKE DRIVE  
 MILWAUKEE, WI 53202

Prepared for  
 Columbia St. Mary's

Contract No.:



HELLMUTH, OBATA + KASSABAUM, INC.  
 ARCHITECTURE, ENGINEERING, PLANNING,  
 INTERIORS, GRAPHICAL CONSULTING  
 903 State Street, Suite 100, City, State, Zipcode  
 Milwaukee, WI 53233  
 Telephone: 414.272.2000  
 Fax: 414.272.2001  
 Internet: http://www.hok.com  
 All reproduction or alteration of copyright material is prohibited.

ASSOCIATE/LOCAL ARCHITECT  
 FOR DESIGN  
**Kahler Slater**  
 111 WEST WISCONSIN AVENUE  
 414.272.2000 (O)  
 414.272.2001 (F)  
 MILWAUKEE, WI 53203-2501

ASSOCIATE/LOCAL ARCHITECT  
 FOR DESIGN  
**PLUNKETT RAYSICH  
 ARCHITECTS**  
 TWO PARK PLAZA, STE. 300  
 10000 WEST PARK PLACE  
 414.259.2000 (O)  
 414.259.2070 (F)  
 MILWAUKEE, WI 53224

M/E ENGINEER OF RECORD:  
**AEI Affiliated  
 Engineers**  
 Affiliated Engineers, Inc.  
 2802 Research Park Boulevard  
 Madison, Wisconsin 53718  
 Tel: 608.238.2816 Fax: 608.238.2814

M/E ASSOCIATE ENGINEER:  
**RD RING &  
 DUCHATEAU**  
 1500 Innovation Drive, Suite 200  
 Menasha, WI 54952  
 Tel: 920.474.7000  
 Fax: 920.474.7000  
 Email: rd@ringduchateau.com



**WALKER  
 PARKING CONSULTANTS**  
 800 Owen Road  
 Suite 1, 80123  
 847.887.2840 FL  
 847.887.7428 Fax

No.	Revised Description	Date

Drawn by: SJT    Reviewed by: JTW  
 Project No: 20030024.22

**LAKE DRIVE CAMPUS  
 OVERALL SITE PLAN**

Digital drawing is 36" x 48". Scan within recordings 1 record.

2/14/2013  
 9:02:04 AM  
 L:\hsa2003\20030024\CAD\Site\plan\2320 Lake Drive\Hospital\Overall Campus 03-22-06.dgn

# Sign Recommendation

## Existing

Sign Type: Monument  
 Quantity: 1  
 Location: Public Facing  
 Illumination: Internal  
 Approx. Size:  
 H: 6'-0"  
 W: 5'-1"  
 OAH: 6'-6"  
 HOG:  
 Comment:

Action: Remove & Replace

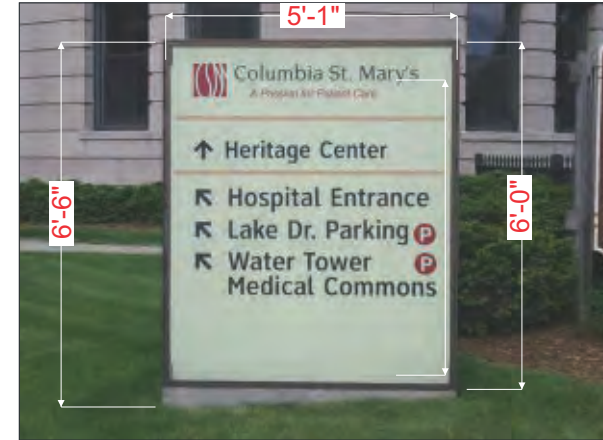
## Make Good:

## Recommended

Sign Type : Way-finding  
 Sign Code: WF-20-BW-ILL  
 Quantity: 1  
 Attachment: Foundation  
 Illumination: YES  
 Approx. Size:  
 H: 5' - 6 3/16"  
 W: 3' - 1 1/2"  
 OAH: 6' - 6"  
 Comment:



Context



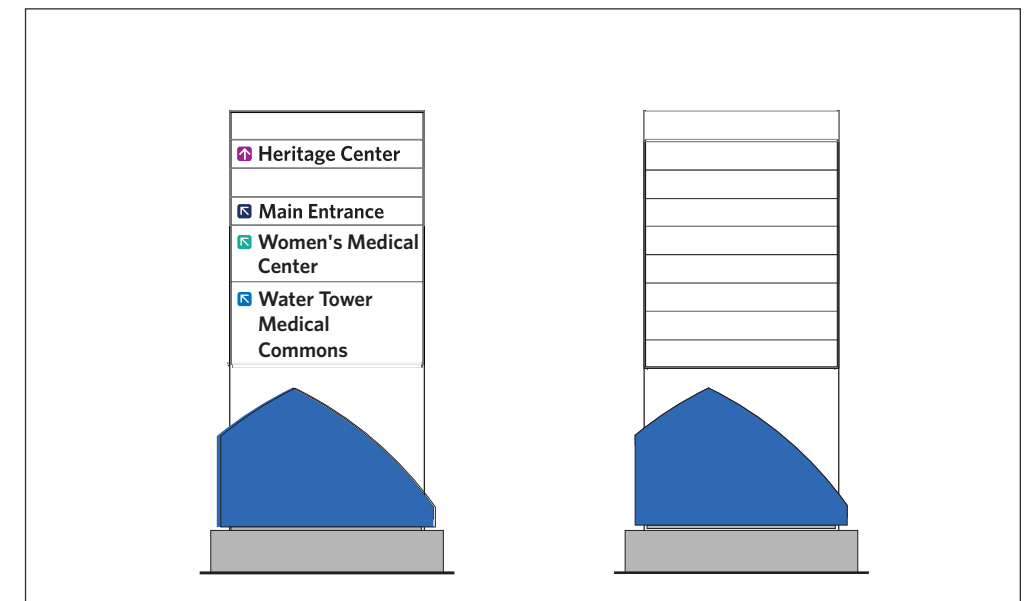
Detail Side A



Detail Side B



Recommended - Side A



Recommended - Side A

Recommended - Side B - BLANK

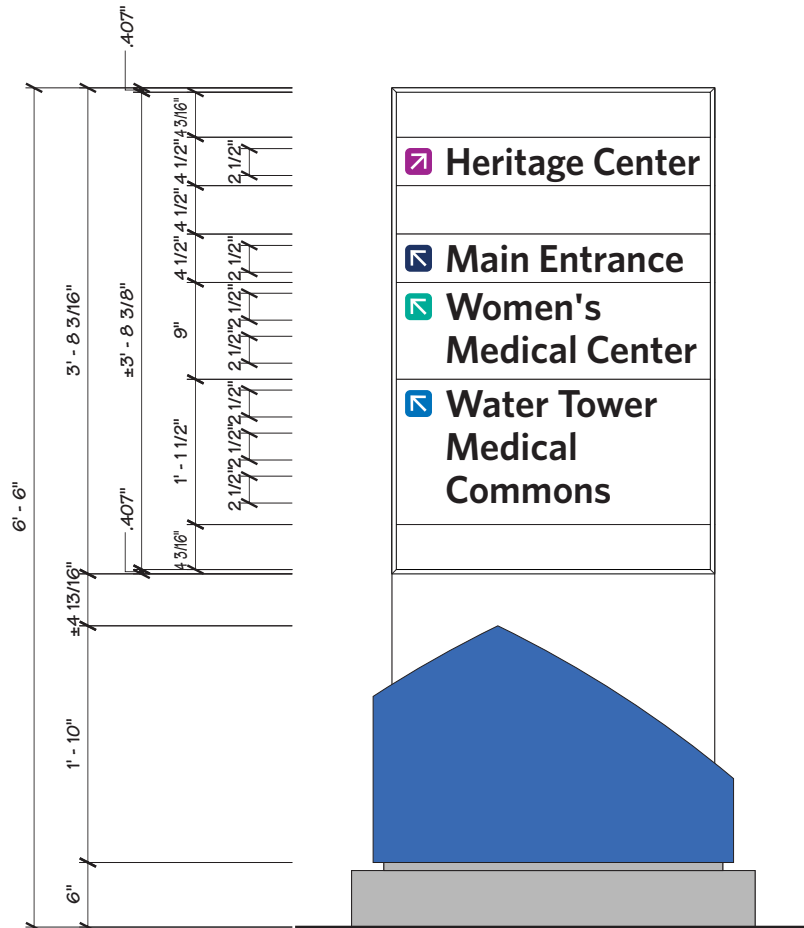
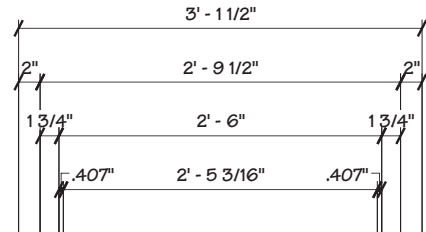
AGI EXTRUDED SLATS PAINTED MP59851 R163470  
SY SATIN V1.0 'OPAQUE WHITE' W/ SATIN FINISH

COPY IS ROUTED AND BACKED  
 W/ DULITE DAY/NIGHT BLACK ACRYLIC  
 -COPY STYLE IS WHITNEY SEMI BOLD

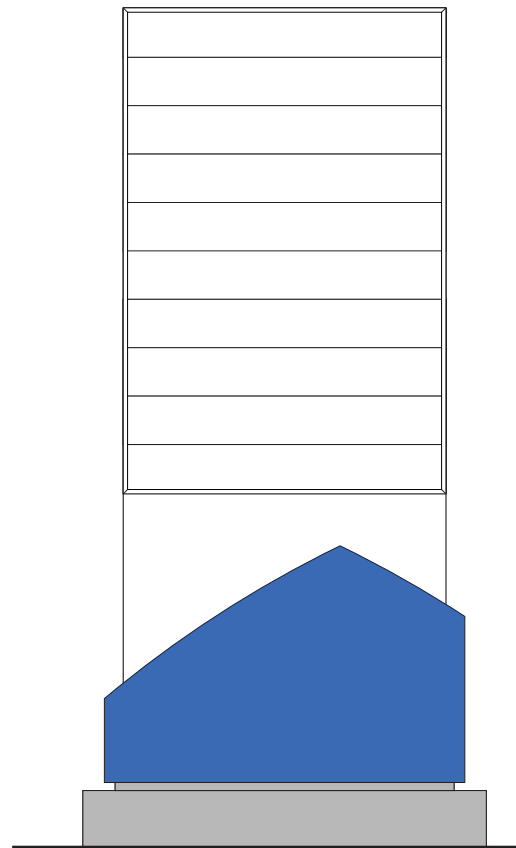
AGI EXTRUDED BODY PAINTED MP59851 R163470  
SY SATIN V1.0 'OPAQUE WHITE' W/ SATIN FINISH

**NOTES:**  
 1.) ACTIVE SIGN TYPES IN DRAWING BELOW.  
 PM TO ADD STANDARD SHOP DRAWING TO WORK RELEASE.  
 - WF.20.ILL

**NOTES:**  
 1.) SITE 14

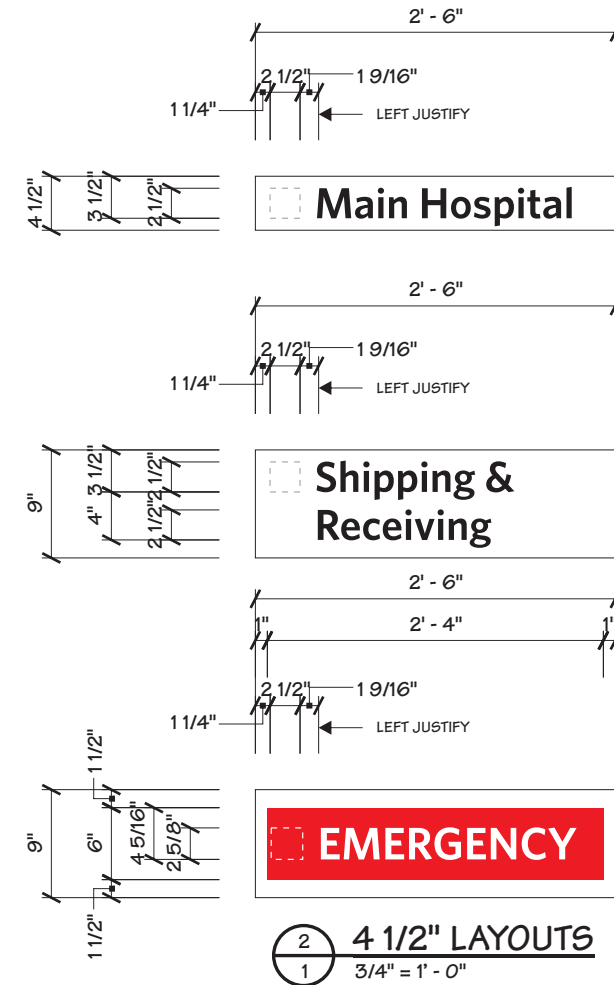


E-4  
SIDE A



E-4  
SIDE B- BLANK

1 GRAPHIC LAYOUT  
 1 3/4" = 1' - 0"



2 4 1/2" LAYOUTS  
 1 3/4" = 1' - 0"

ASCENSION GREEN PANTONE 3275C	ASCENSION WAYFINDING DARK GRAY PANTONE COOL GREY 11C	ASCENSION WAYFINDING GREEN PANTONE 361C
ASCENSION BLUE PANTONE 285C	ASCENSION WAYFINDING ORANGE PANTONE 3564C	ASCENSION WAYFINDING GOLD PANTONE 7409
ASCENSION WAYFINDING PURPLE PANTONE 7671C	ASCENSION WAYFINDING DARK BLUE PANTONE 654C	ASCENSION VIOLET PANTONE 248C

3 COLOR FIELD LEGEND  
 1 N.T.S.

# Sign Recommendation

## Existing

Sign Type: Monument  
 Quantity: 1  
 Location: Public Facing  
 Illumination: Internal  
 Approx. Size:  
 H: 6'-1 1/2"  
 W: 5'-1"  
 OAH: 6'-6"  
 HOG:  
 Comment:

Action: Replace

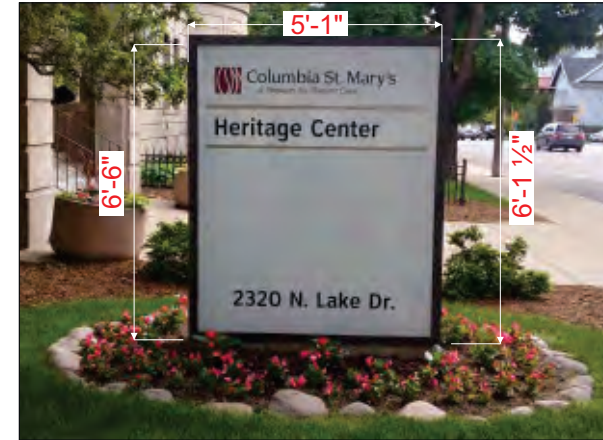
Make Good:

## Recommended

Sign Type: Small Monument  
 Sign Code: MON.47.BW  
 Quantity: 1  
 Attachment: Base/Plinth  
 Illumination: Internal  
 Approx. Size:  
 H: 5'-8"  
 W: 6'-6"  
 OAH: 6'-9"  
 Comment:



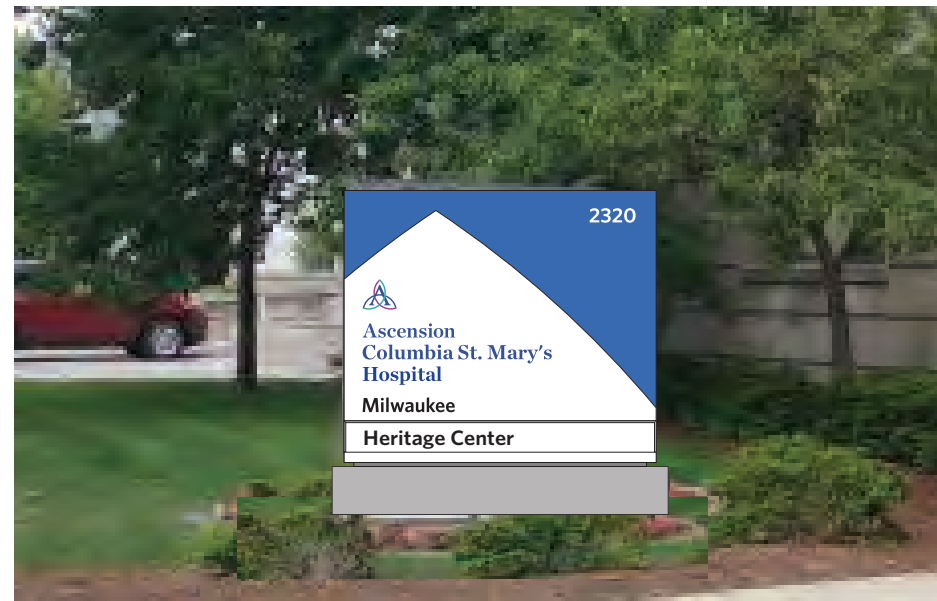
Context



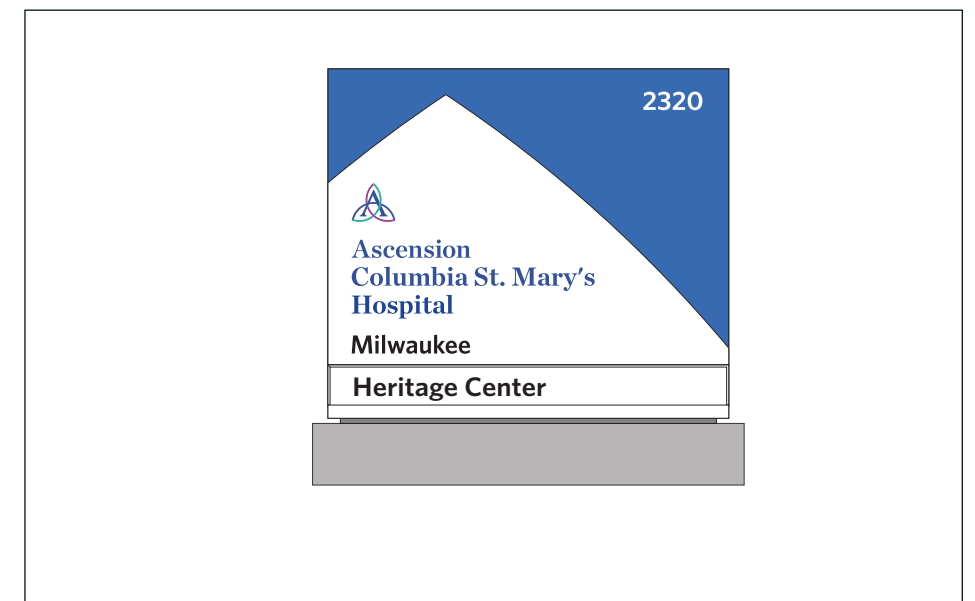
Detail Side A



Detail Side B



Recommended - Side A



Recommended - Side B

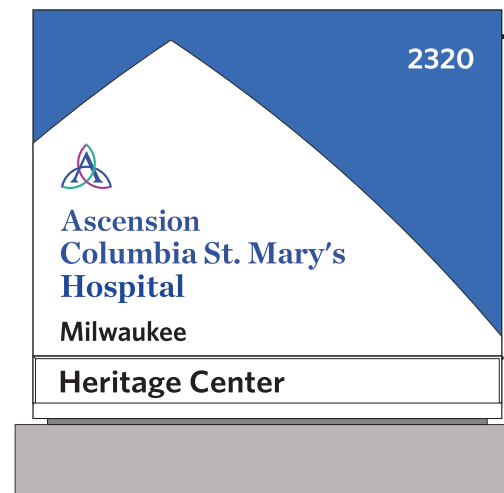
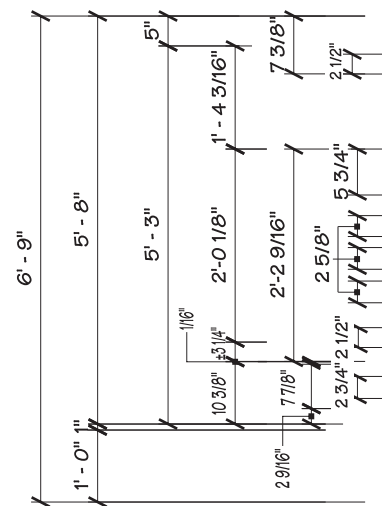
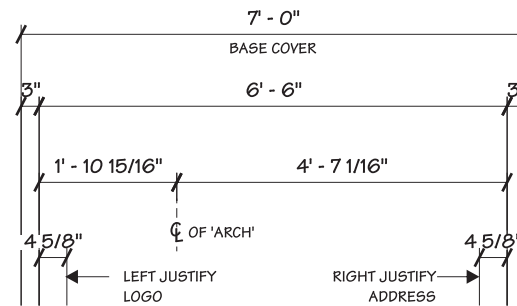
**AGI EXTRUDED SLATS PAINTED MP59851 R163470**  
**SV SATIN V1.0 'OPAQUE WHITE' W/ SATIN FINISH**

COPY IS ROUTED AND BACKED  
W/ **DULITE DAY/NIGHT BLACK ACRYLIC**  
-COPY STYLE IS WHITNEY SEMI BOLD

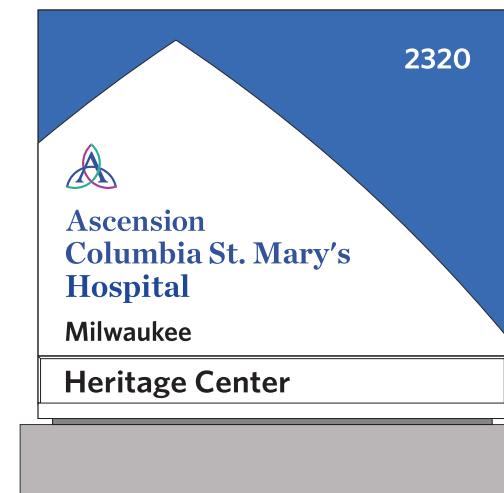
**AGI EXTRUDED BODY PAINTED MP59851 R163470**  
**SV SATIN V1.0 'OPAQUE WHITE' W/ SATIN FINISH**

**NOTES:**  
1.) ACTIVE SIGN TYPES IN DRAWING BELOW.  
PM TO ADD STANDARD SHOP DRAWING TO WORK RELEASE.  
-MON.47.BW.ILL

**NOTES:**  
1.) SITE 14



E-7  
SIDE A



E-7  
SIDE B

1 GRAPHIC LAYOUT  
2 3/8" = 1' - 0"