



# Certificate of Appropriateness

Milwaukee Historic Preservation Commission/841 N Broadway/Milwaukee, WI 53202/phone 414-286-5722

## Property Description of work

**1020 E. Brady Street, Brady Street Historic District**

Install a wall sign and blade sign per the attached sign specs. Background faces on the signs must be opaque

**Date issued** 5/4/2026

In accordance with the provisions of Section 320-21 (11) and (12) of the Milwaukee Code of Ordinances, the Milwaukee Historic Preservation Commission has issued a certificate of appropriateness for the work listed above. The work was found to be consistent with preservation guidelines. The following conditions apply to this certificate of appropriateness:

**Mounting posts for signs shall be drilled into mortar joints only and not into the face of any brick or stone. Any surface-mounted electrical conduit shall be painted to match surrounding building material.**

**Background face on the wall sign and blade sign must be opaque.**

All work must be done in a craftsman-like manner. Staff must approve any changes or additions to this certificate before work begins. Work that is not completed in accordance with this certificate may be subject to correction orders or citations. If you require technical assistance, please contact Historic Preservation staff as follows: Phone: (414) 286-5722 E-mail: [hpc@milwaukee.gov](mailto:hpc@milwaukee.gov).

## Permits and timeline

You are responsible for determining if permits are required and obtaining them prior to commencing work. Consult the Development Center on the web or by telephone for details: [www.milwaukee.gov/lms](http://www.milwaukee.gov/lms) - (414) 286-8210. If permits are not required, work must be completed within one year of the date this certificate was issued. If permits are required, permits must be obtained within one year of the date this certificate was issued.

City of Milwaukee Historic Preservation

Copies to: Development Center

**8 PAGES TO FOLLOW**

# SIGN: STORE FRONT CHANNEL BOX WITH FLUSH MOUNT

## Sign

MiYAKi · Izakaya · 焼鳥 · 寿司

113"

14"



**Client Name:**

Miyaki

**Location:**

1020 E Brady St  
Milwaukee, WI 53202

**Start Date:**

**Last Revision:**

**Job#:**

**Drawing#:**

**Page:**

Linjin.xiao

Client Approval

Linjin.xiao

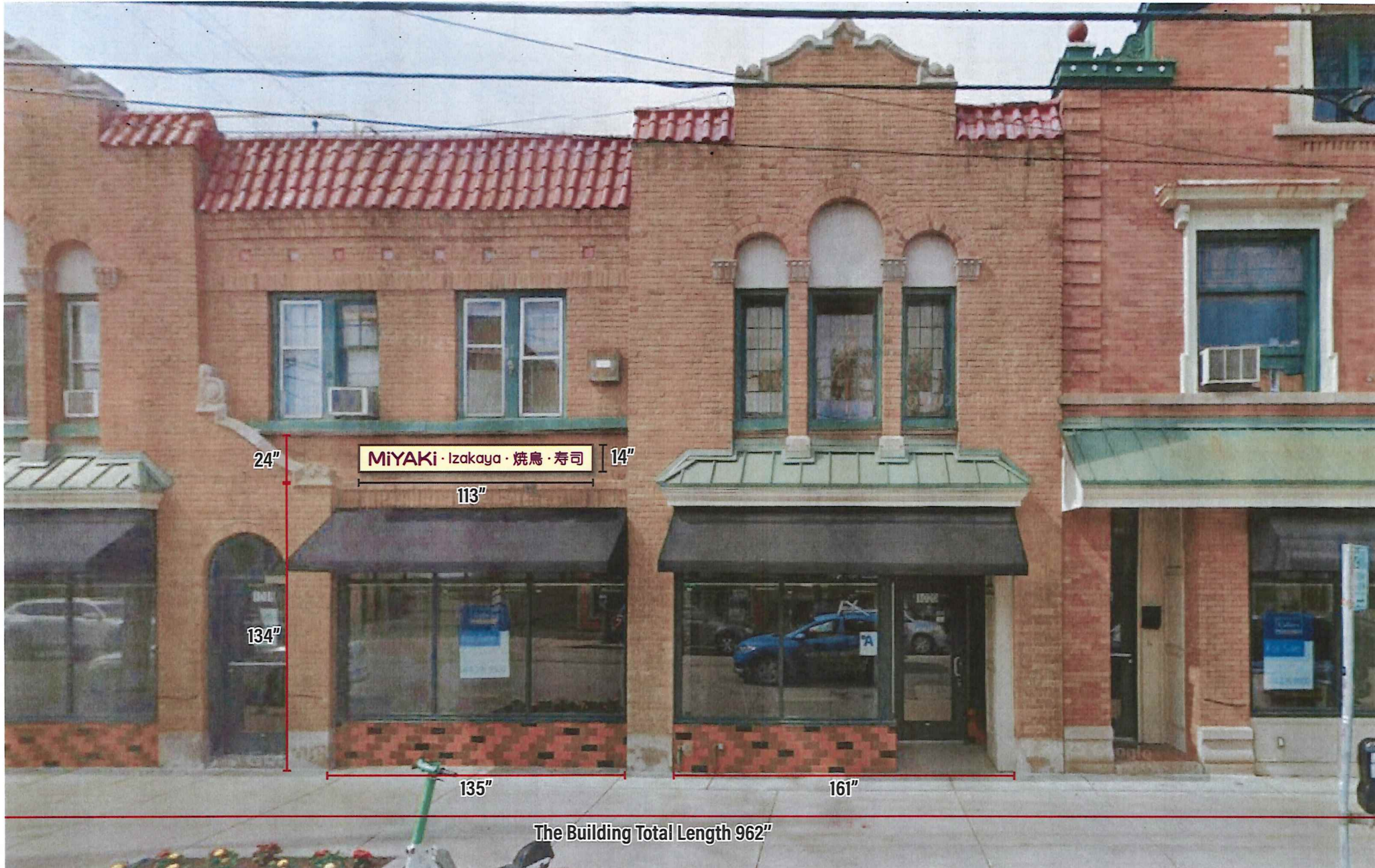
Landlord Approval

**Sales Rep:**

**Designer:**

# SIGN: STORE FRONT CHANNEL BOX WITH FLUSH MOUNT

Day View



# SIGN: STORE FRONT CHANNEL BOX WITH FLUSH MOUNT

## Night View



# SIGN: STORE FRONT CHANNEL BOX WITH FLUSH MOUNT

## Sectional View

MiYAKi · Izakaya · 焼鳥 · 寿司

M4 screws fix the surface shell and bottom shell

Stainless steel plow-folded front with 30MM flanged edge, 10MM recessed, 100MM thickness for lightbox shell, Surface thermal transfer wood grain

Solder M3 screws on the back of the housing to secure the acrylic panel

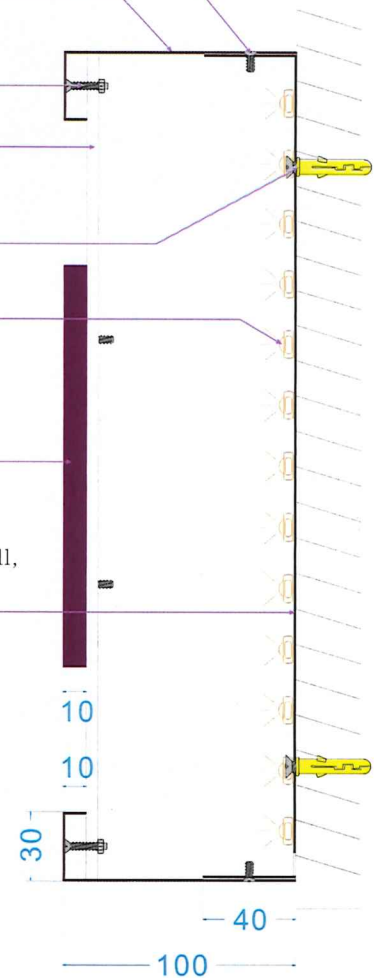
5MM milky white acrylic panel

Installation of M6 self tapping screws, rubber plugs, and structural adhesive on the back

Internally equipped with 3000K waterproof LED module

10MM milk white acrylic cutting text, Pantone221C matte paint, M4 screw holes on the back for screw fixation


Stainless steel 4-sided planed and folded 40MM bottom shell, white paint finish



# SIGN: STORE FRONT BLADE SIGN

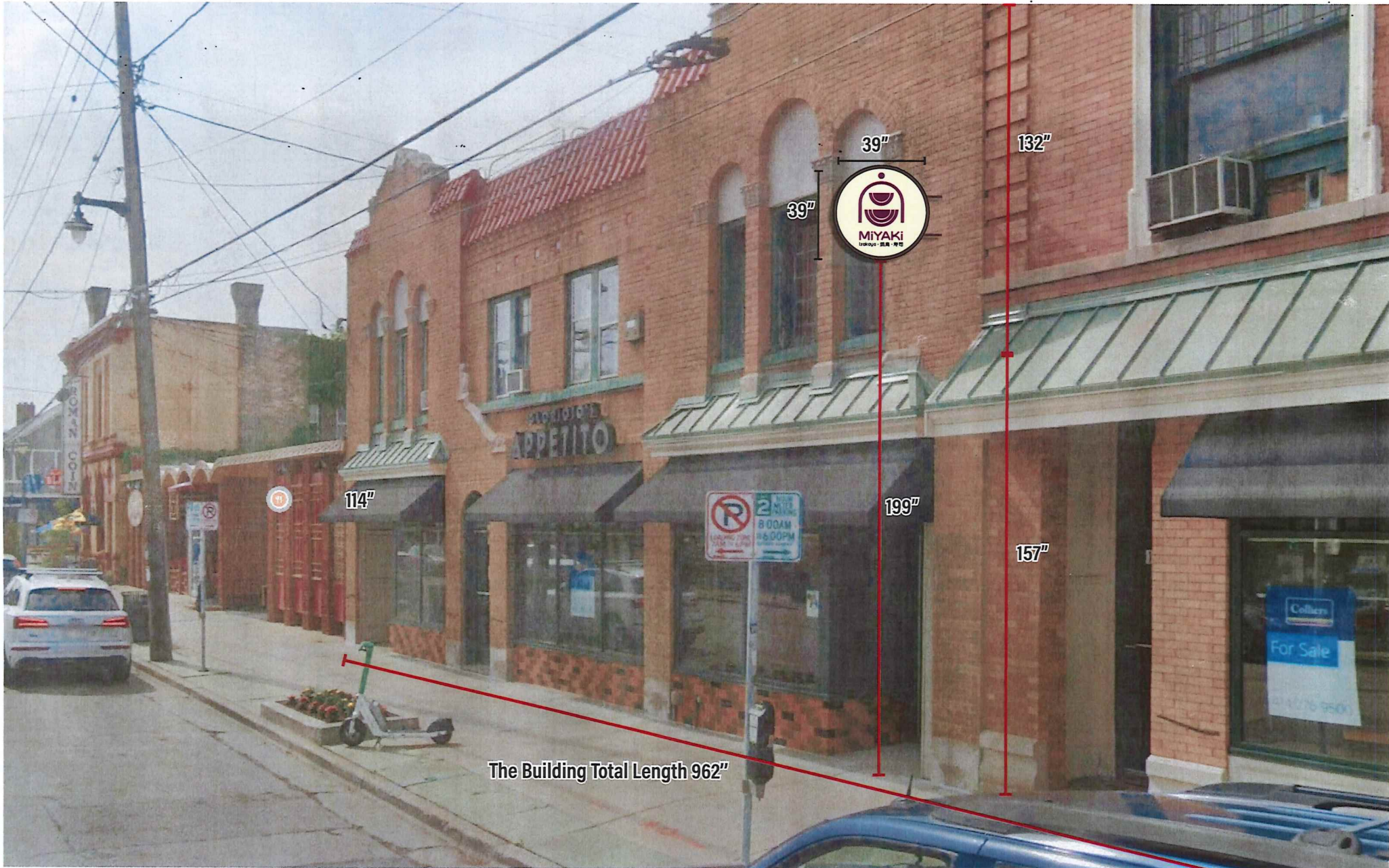
## Sign



|                                                                                                                                                  |                                                            |                                           |                                                |
|--------------------------------------------------------------------------------------------------------------------------------------------------|------------------------------------------------------------|-------------------------------------------|------------------------------------------------|
|  <b>QaPrints</b><br>奇迹廣告<br><b>TOP</b><br>TOP CHANNEL LETTERS | <b>Client Name:</b><br>Miyaki                              | <b>Start Date:</b><br><i>Am Jin X 100</i> | <b>Sales Rep:</b>                              |
|                                                                                                                                                  | <b>Location:</b><br>1020 E Brady St<br>Milwaukee, WI 53202 | <b>Last Revision:</b>                     | <b>Client Approval:</b><br><i>Am Jin X 100</i> |
|                                                                                                                                                  |                                                            | <b>Job#:</b>                              |                                                |
|                                                                                                                                                  |                                                            | <b>Drawing#:</b>                          | <b>Landlord Approval:</b>                      |
|                                                                                                                                                  |                                                            | <b>Page:</b>                              |                                                |

# SIGN: STORE FRONT BLADE SIGN

## Day View



# SIGN: STORE FRONT BLADE SIGN

## Night View



# SIGN: STORE FRONT BLADE SIGN

